

Profile of Older Floridians

Putnam County

Unless otherwise noted, the data presented refers to individuals age 60 and older.

Skilled Nursing Facility (SNF) Utilization	
SNF Beds	337
Community Beds	337
Sheltered Beds	-
Veterans' Affairs Administration Beds	-
Other Beds	-
SNFs With Beds	3
Community Beds	3
Sheltered Beds	-
Veterans' Affairs Administration Beds	-
Other Beds	-
SNFs With Community Beds	3
Community Bed Days	123,005
Community Patient Days	111,245
Medicaid Patient Days	77,453
Occupancy Rate	90.4%
Percent Medicaid	69.6%

Home Health Agencies	
Agencies	7
Medicaid Certified Agencies	2
Medicare Certified Agencies	5

Homemaker & Companion Service Companies	
Companies	2

Adult Day Care	
Facilities	-
Capacity	-

Assisted Living Facility	
Total Beds	210
OSS Beds ⁹	69
Non-OSS Beds	141
Total Facilities	9
Facilities with ECC License ¹⁰	1
Facilities with LMH License ¹¹	1
Facilities with LNS License ¹²	4

Adult Family Care Homes	
Homes	-
Beds	-

Ambulatory Surgical Centers	
Facilities	-
Operating Rooms	-
Recovery Beds	-

Hospitals	
Hospitals	1
Hospitals with Skilled Nursing Units	0
Hospital Beds	99
Skilled Nursing Unit Beds	0

Medicaid & Medicare Eligibility	
Medicaid Eligible - All Ages	22,352
60+ Medicaid Eligible	3,210
Dual Eligible - All Ages	4,347
60+ Dual Eligible	2,899

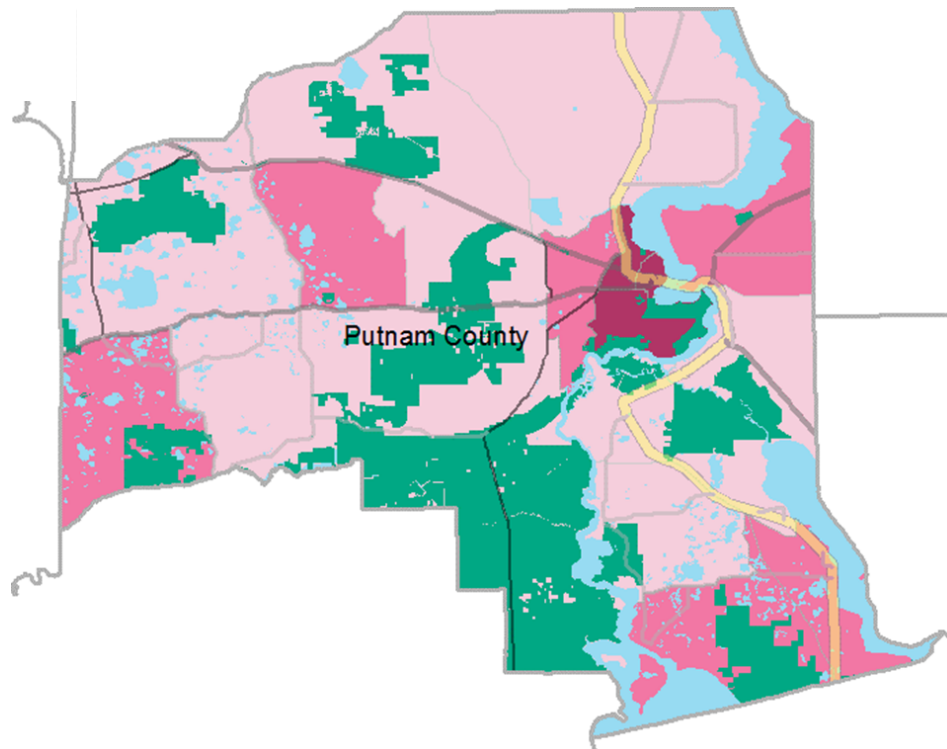
Source for Page: AHCA, 2017

Profile of Older Floridians

Putnam County

Unless otherwise noted, the data presented refers to individuals age 60 and older.

Elder Needs Index



The Elder Needs Index (ENI) is a composite measure that includes: (1) the percentage of the 60 and older population that is age 85 and older; (2) the percentage of the 55 and older population who are members of racial or ethnic minority groups; (3) the percentage of the 65 and older population with one or more disability; and (4) the percentage of the 55 and older population living below 125% of the Federal Poverty Level. The Index is an averaged score that indicates senior citizens' overall level of risk for a probable need of social services within a geographic area. It is not a percentage of the area's population. The green areas of the map represent current conservation land such as national parks, state forests, wildlife management areas, local and private preserves. The blue areas of the map represent current water features such as lakes, streams, rivers, and coastlines. Complete maps available at http://elderaffairs.state.fl.us/doea/eni_home.php

Source: Florida Department of Elder Affairs using U.S. Census Bureau, 2012-16 ACS data

Useful Websites

- [Office of Economic & Demographic Research \(EDR\)](#)
- [U.S. Census Bureau, American Community Survey](#)
- [U.S. Census Bureau, Quick Facts](#)
- [Agency for Health Care Administration \(AHCA\)](#)

- [FL Division of Emergency Management \(Shelters\)](#)
- [Florida Housing Data Clearinghouse](#)
- [County Chronic Disease Profile](#)

Profile of Older Floridians

Putnam County

Unless otherwise noted, the data presented refers to individuals age 60 and older.

¹ Those who report speaking English "Not well" or "Not at all" are defined as having Limited English Proficiency (LEP) in this profile.

² Total Minorities = (60+ Population) - (White Non-Hispanic 60+)

³ A "dependency ratio" is commonly depicted as a ratio of workers to non-workers. Rather than using labor-force participation rates, which fluctuate, a stable dependency ratio can be estimated by using the number of individuals in the population who fall into age groups generally aligned with school-aged kids, working age adults, and retired seniors. For this graphic, working age adults (defined as 18-59) were compared to minors (age 0-17)(youth dependency ratio) and seniors (age 65+)(aged dependency ratio).

⁴ Medically Underserved Areas/Populations are areas or populations designated by Health Resources & Services Administration(HRSA) as having too few primary care providers, high infant mortality, high poverty or a high elderly population.

⁵ Households age 65 and older paying more than 30 percent of income for housing costs (including utilities) and have an income below 50 percent of the area median income.

⁶ Wider Opportunities for Women Elder Economic Security Standard™ Index (Elder Index) measures how much income retired older adults require to meet their basic needs without public or private assistance. The Elder Index measures basic expenses for elders age 65+ living in the community, not in institutions. Annual expenses include: housing, including utilities, taxes, insurance; food; transportation; health care, based on good health; and miscellaneous. Data found at <http://www.basiceconomicsecurity.org/EI/>

⁷ With One Type of Disability: 60+ people who have only one type of disability

⁸ Probable Alzheimer's Cases = (65-74 Population x 0.036596) + (75-84 Population x 0.169158) + (85+ Population x 0.427599)
 Alzheimer's by Age in 2017 Alzheimer's Disease Facts and Figures Report used to develop calculation can be found at https://www.alz.org/getmedia/4d0840b6-0baa-4b97-8a0e-1775cfbf44a4/statesheet_florida

⁹ OSS Beds: Optional State Supplementation Beds. Optional State Supplementation (OSS) is a cash assistance program. Its purpose is to supplement a person's income to help pay for costs in an assisted living facility, mental health residential treatment facility, and adult family care home. It is NOT a Medicaid program.

¹⁰ ECC License: Extended Congregate Care License. The ECC license is a specialty license that enables a facility to provide, directly or through contract, services beyond those permissible under the standard license, including acts performed by licensed nurses, and supportive services defined by rule to persons who otherwise would be disqualified from continued residence in a facility licensed under this part.

¹¹ LMH License: Limited Mental Health License. Any facility intending to admit three or more mental health residents must apply for and obtain a limited mental health license from AHCA's Assisted Living Unit before accepting the third mental health resident.

¹² LNS License: Limited Nursing Services License. The LNS license is a specialty license that enables a facility to provide a select number of nursing services.

¹³ Florida Registered Voters: Totals reflect the number of active registered voters in Florida on 03/20/2018