

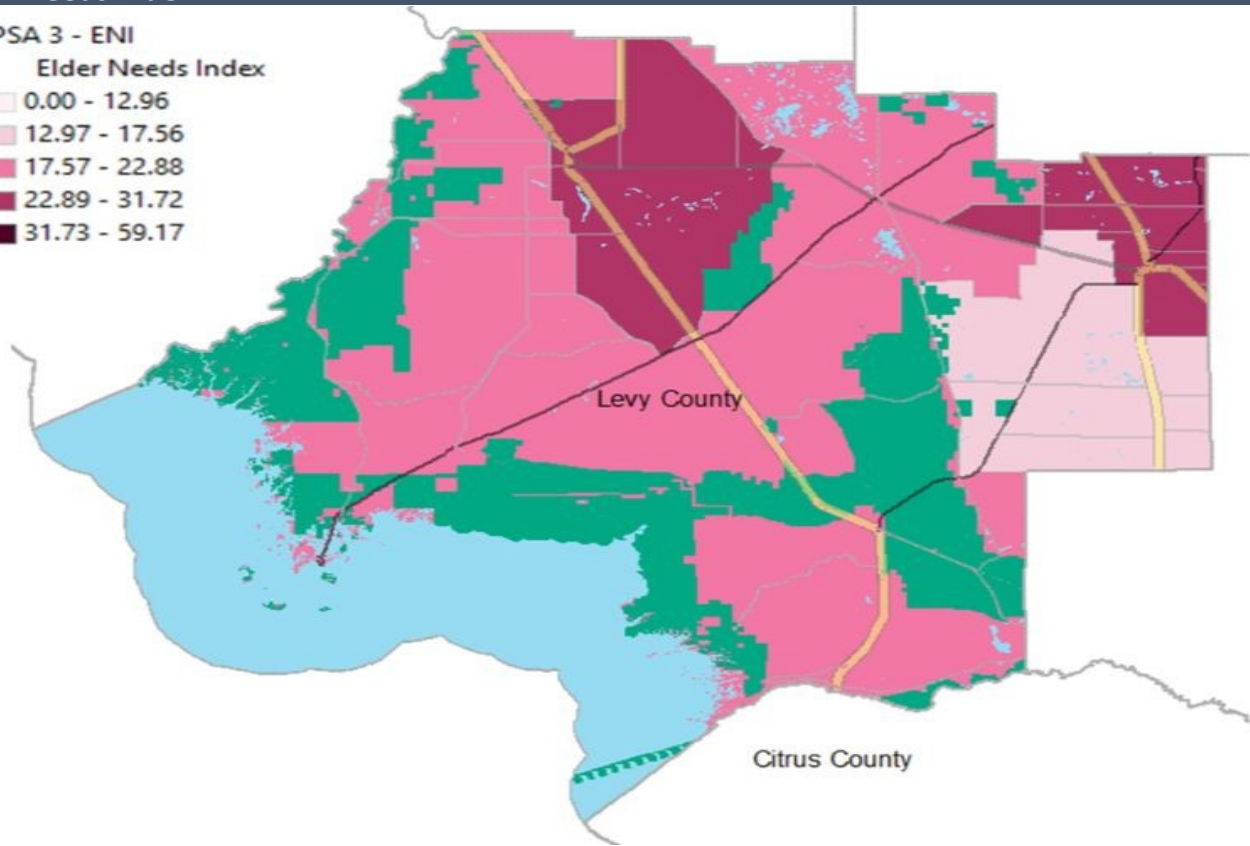
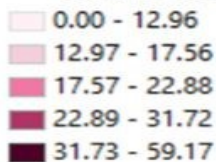
## Levy County

This profile of older Floridians is a source of current information related to seniors in the county. Topics include the current and future population of older adults, the prevalence of older adults who experience financial and housing issues, the array of health and medical resources, and information related to disasters. As Florida's older adult population grows, awareness of these issues is needed to ensure that elders continue to be vital participants in their communities.

### Elder Needs Index

PSA 3 - ENI

Elder Needs Index



The Elder Needs Index (ENI) is a measure that includes: (1) the percentage of the 60 and older population that is age 85 and older; (2) the percentage of the 55 and older population that are members of racial or ethnic minority groups; (3) the percentage of the 65 and older population with one or more disability; and (4) the percentage of the 55 and older population living below 125 percent of the Federal Poverty Level. ENI is an averaged score indicating older adults who may need social services within a geographic area. **It is not a percentage of the area's population.** The green areas of the map represent bodies of land such as national parks, state forests, wildlife management areas, and local and private preserves. The blue areas of the map represent bodies of water such as lakes, streams, rivers, and coastlines. Interactive maps, viewing software, and a detailed user's guide are available at [http://elderaffairs.state.fl.us/doea/eni\\_home.php](http://elderaffairs.state.fl.us/doea/eni_home.php)

The index cutpoints in the ENI is scaled at the PSA-level

Source: Florida Department of Elder Affairs using U.S. Census Bureau, 2013-2017 American Community Survey 5-Year Estimates

### Useful Websites

Bureau of Economic and Business Research (BEBR)  
U.S. Census Bureau, American Community Survey (ACS)  
U.S. Census Bureau, Quick Facts  
Florida Agency for Health Care Administration (AHCA)  
Florida Department of Elder Affairs (DOEA)  
How to Become an Age Friendly Community

Florida Division of Emergency Management (Shelters)  
Florida Housing Data Clearinghouse  
County Chronic Disease Profile  
Aging Integrated Database (AGID)  
Florida DOEA ENI Maps

## Levy County Demographic Profile

The demographics section presents the population characteristics of those age 60 and older and examines traits about older Floridians, such as the number of veterans, voters, and drivers.

Age Category	Value	Percent
All Ages	41,054	100%
Under 18	8,048	20%
Under 60	28,226	69%
18-59	20,178	49%
60+	12,828	31%
65+	9,466	23%
70+	6,379	16%
75+	3,832	9%
80+	1,968	5%
85+	824	2%

Source: BEBR, 2019

Gender	Value	Percent
Male	6,145	48%
Female	6,683	52%

Source: BEBR, 2019

Living Alone	Value	Percent
Male Living Alone	1,385	48%
Female Living Alone	1,500	52%

Source: AGID 2012-16 ACS

Educational Attainment (65+)	Value	Percent
Less than High School	1,722	18%
High School Diploma	3,611	38%
Some College, No Degree	1,861	20%
Associates Degree or Higher	2,128	22%

Source: U.S. Census Bureau, 2013-2017 ACS

Marital Status	Male	Female
<b>Never Married</b>	335	165
Percentage Never Married	6%	3%
<b>Married</b>	3,855	2,890
Percentage Married	67%	47%
<b>Widowed</b>	705	1,890
Percentage Widowed	12%	31%
<b>Divorced</b>	900	1,245
Percentage Divorced	16%	20%

Source: AGID 2012-16 ACS

Note: The American Community Survey (ACS) requires a minimum of 50 cases in a geographic area and therefore a value of 0 may denote fewer than 50 seniors in a region.

Race and Ethnicity	Value	Percent
White	11,771	92%
Black	908	7%
Other Minorities	149	1%
<b>Total Hispanic</b>	423	3%
White Hispanic	392	3%
Non-White Hispanic	31	0%
Total Non-Hispanic	12,405	97%
Total Minority	1,629	13%

Source: BEBR, 2019

Driver License Holders	Value	Percent
Drivers	12,562	37%

Source: Florida Department of Highway Safety and Motor Vehicles, 2019

Registered Voters	Value	Percent
Registered Voters	12,624	43%

Source: Florida Department of State, 2018

Veterans	Value	Percent
Age 45-64	1,255	27%
Age 65-84	2,338	51%
Age 85+	447	10%

Source: U.S. Department of Veterans Affairs

Grandparents	Value	Percent
<b>Living With Grandchildren</b>	515	4%
Grandparent Responsible for Grandchildren	250	2%
Grandparent Not Responsible for Grandchildren	265	2%
<b>Not Living With Grandchildren</b>	11,310	88%

Grandchildren are defined as being under the age of 18.

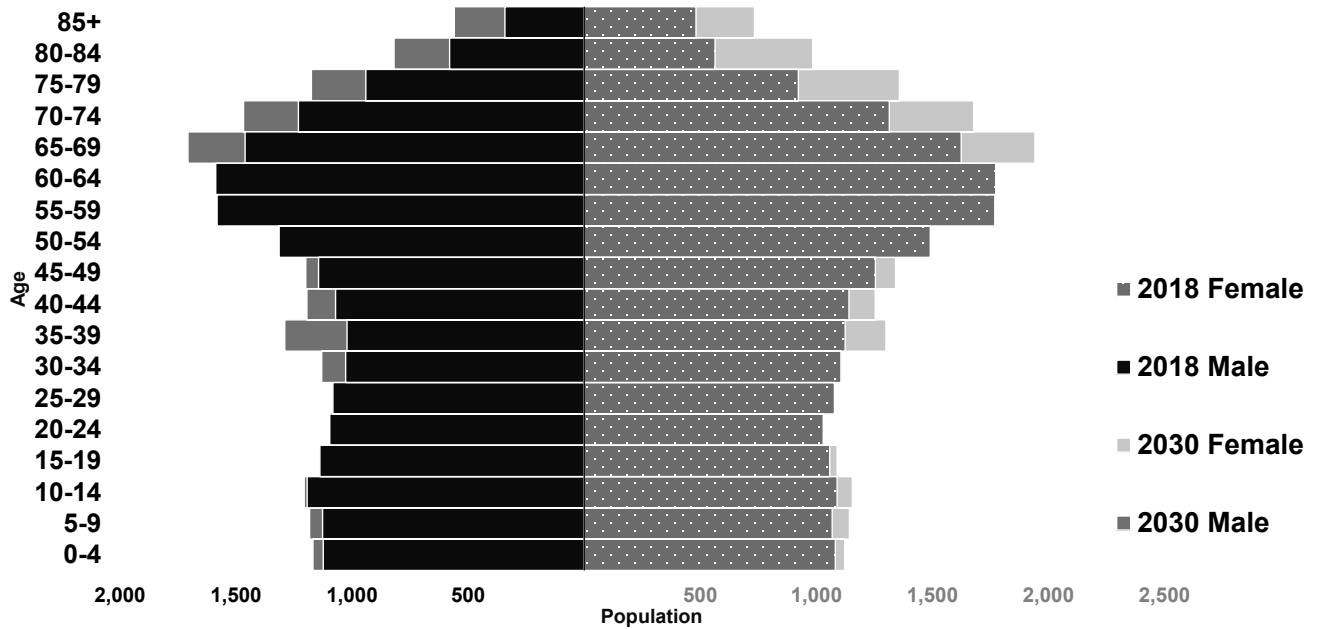
Source: AGID 2012-16 ACS

English Proficiency	Value	Percent
With Limited English Proficiency	35	0%

Source: AGID 2012-16 ACS

## Levy County Demographic Profile

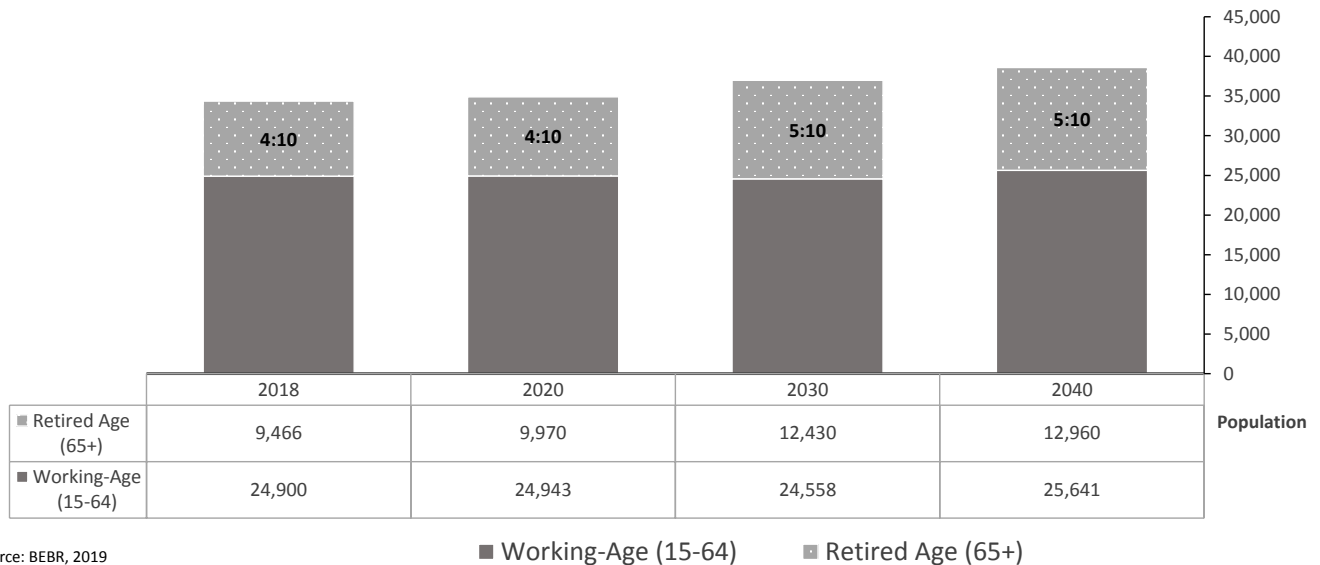
The population pyramid below compares the projected older adult population by gender between 2018 and 2030, demonstrating the changes expected in the next decade. As a whole, Florida is expected to experience population growth, with some areas expecting notable growth in the proportion of those age 65 and older.



Source: BEBR, 2019

## Senior Dependency Ratio

The dependency ratio contrasts the number of working-age (15-64) individuals compared to the number of individuals age 65 and older who are likely retired from the workforce. This ratio reflects the ongoing contributions of taxes and wages to support the health care and retirement systems used by retirees, as well as the availability of younger individuals to serve as caregivers to older loved ones.



Source: BEBR, 2019

## Levy County Financial Profile

This section examines financial conditions, poverty rates, and the cost of living for older Floridians. The ratio of income to poverty level graphic below shows the distribution of older adults relative to the poverty level to show the proportion of the senior population who fall below the Federal Poverty Level (FPL). The portrayal of the financial conditions of older adults is detailed in the final graphic, which includes information about income relative to rates of homeownership and partnership status in the consideration of cost of living.

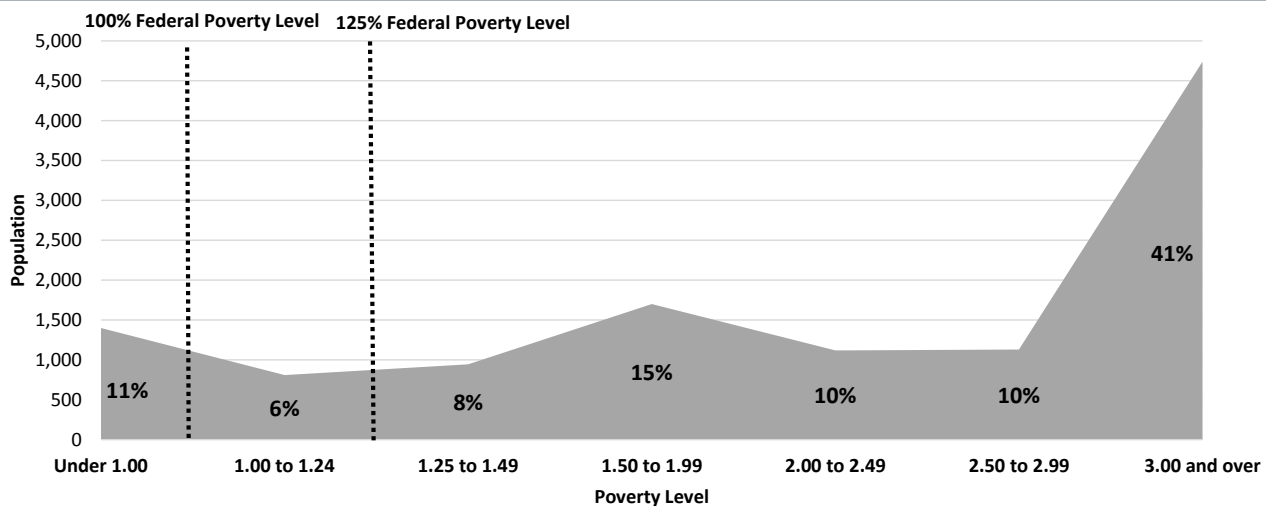
Federal Poverty Level	Value
Single-Person Household	\$12,140
Two-Person Household	\$16,460
125% Single-Person Household	\$15,175
125% Two-Person Household	\$20,575

Source: U.S. Department of Health & Human Services, 2018

Poverty	Value	Percent
At Poverty Level	1,405	11%
Below 125% of Poverty Level	2,220	17%
Minority At Poverty Level	395	3%
Minority Below 125% of Poverty Level	535	4%

Source: AGID 2012-16 ACS

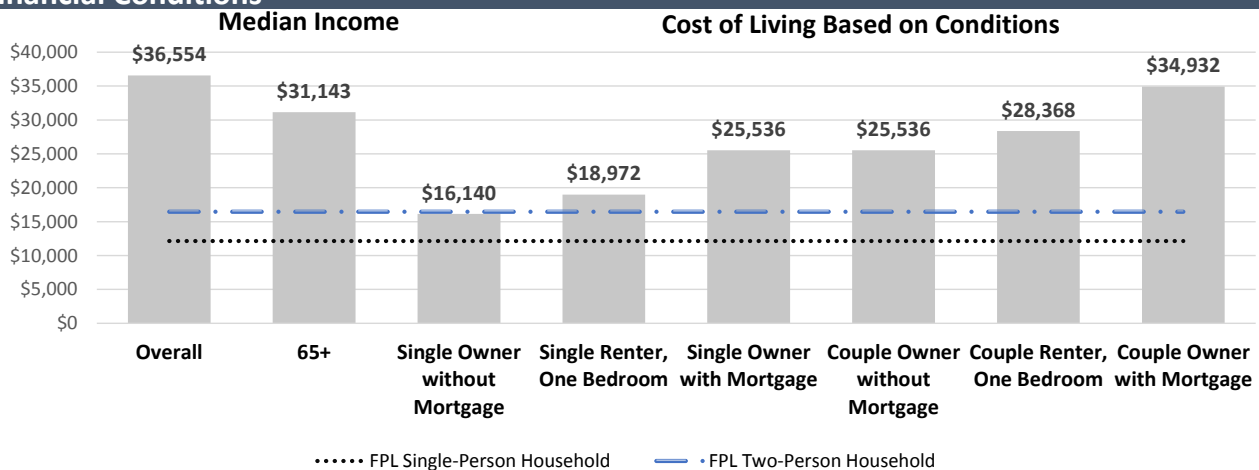
## Ratio of Income to Poverty Level



Value is expressed as the percentage of the 60+ population, with the dotted lines representing the Federal Poverty Level.

Source: AGID 2012-16 ACS

## Financial Conditions



Cost of living is an index of how much income retired older adults require to meet their basic needs to live in their community without assistance.

Source: U.S. Census Bureau, 2013-2017 ACS and WOW Elder Economic Security Standard Index, 2016

## Levy County Livability Profile

The livability section presents new elements, such as available affordable housing for older adults. Many essential community elements are also included below, such as sidewalk safety, the safety of roadways, and availability of green spaces. The rates of older Floridians who have access to a vehicle or public transportation, as well as the availability of internet access and various food resources, are also provided. These provide estimates of older adults' ability to access community resources.

### Pedestrian Safety Percent

Sidewalks with Barriers 38%

Physical barriers are those that separate motorized vehicle lanes from sidewalks or shared path (e.g. areas for parking lots, guardrail, trees, etc.).

Source: Florida Department of Transportation, 2018

### Road Incidents Value

Total Involved in Fatal Car Crashes per 100,000 62

This figure includes occupants and non-occupants involved in a crash.

Source: National Highway Traffic Safety Administration, 2017

### SNAP or Food Stamps Value

Participants 1,649

Potentially Eligible 2,220

Participation Rate 74%

Source: Florida Department of Children and Families, 2018

### Food Resource Centers Value

SNAP Access Site 9

Fresh Access Bucks Outlet 0

Farmer's Market 0

Food Distribution (No Cost) 44

SNAP Retailers 47

Congregate Meal Sites 3

Food Distribution (No Cost) is the number of food pantries, soup kitchens, and food banks in the area.

Source: Feeding Florida.org, USDA, and Florida DOEA, 2019

### Public Transportation Options Value

Bus Operations at least at the County 1

Rail Operations at least at the County 0

Public Transit Service Area (sq. mi.) 71

Public Transit Service Area Population 97,497

Annual Unlinked Trips 51,730

Vehicles Operated in Maximum Service (VOMS) 10

Total Miles of Bike Lanes 11

Information on service area is not reported by rural and intercity public transit.

VOMS are the number of vehicles operated to meet the annual max service, and unlinked trips are the number of passengers boarding public transit.

Source: Federal Transit Administration, 2017, and FDOT, 2018

### Green Space Value

Number of Nearby State Parks 6

Nearby refers to the park that has the shortest distance from the center of the county.

Source: Florida Department of Transportation, 2018

### Rural-Urban Designation Value

Census Tracts Rural 40%

Census Tracts Urban 60%

Number of Census Tracts 10

Source: U.S. Department of Agriculture, 2019

### Households With High Cost Burden (65+) Value

Owner-Occupied Households 5,109

Percent of Owners with High Cost Burden 9%

Renter-Occupied Households 610

Percent of Renters with High Cost Burden 28%

Households with a high cost burden have occupants age 65+ paying more than 30% of income for housing costs and having an income below 50% of the area median income.

Source: The Shimberg Center for Housing Studies, 2018

### Affordable Housing Inventory Value

Properties 5

Properties Ready for Occupancy 5

Total Units 310

Units with Rent and/or Income Restrictions 310

Units Receiving Monthly Rental Assistance 112

Affordable housing inventory receives funding from HUD, Florida Housing Financing Corp., and the USDA. The inventory above includes older adults as its target population.

Source: The Shimberg Center for Housing Studies, 2018

### Housing Units by Occupancy (65+) Percent

Owner-Occupied Housing Units 56%

Renter-Occupied Housing Units 25%

Source: U.S. Census Bureau, 2013-2017 ACS

### Vehicle Access (65+) Percent

Owner-Occupied Households with Access to Vehicle(s) 96%

Renter-Occupied Households with Access to Vehicle(s) 91%

Source: U.S. Census Bureau, 2013-2017 ACS

### Employment Status (65+) Value Percent

Number of Seniors Employed 945 10%

Number of Seniors Unemployed 544 6%

Source: U.S. Census Bureau, 2013-2017 ACS

### Retirement (65+) Value Percent

Social Security Beneficiaries 8,935 70%

SSI Recipients 239 17%

SSI stands for Supplemental Security Income. To qualify, a person must be at least age 65 OR be blind or disabled. Also, the person must have limited income and resources.

Source: U.S. Social Security Administration, 2018

### Internet Access (65+) Percent

Have Internet Access 66%

Source: U.S. Census Bureau, 2013-2017 ACS

## Levy County Health Profile and Medical Resources

The health and medical section presents the variety and availability of different types of facilities, medical professionals, and treatment services in the community. This includes complex estimates based on probable usage by older adults. For example, the "Medically Underserved" are areas designated by the U.S. Department of Health and Human Services as having too few primary care providers, high infant mortality, high poverty, or a high elderly population. Medical access and health support services information is an important area for community planners to ensure that support is in place to accommodate an older population.

Ambulatory Surgical Centers	Value
Facilities	0
Operating Rooms	0
Recovery Beds	0

Source: Florida AHCA, 2019

Hospitals	Value
<b>Hospitals</b>	1
Hospitals with Skilled Nursing Units	0
<b>Hospital Beds</b>	40
Skilled Nursing Unit Beds	0

Source: Florida AHCA, 2019

Medical Professionals	Value
<b>Medical Doctors</b>	
Licensed	8
Limited License	0
Critical Need Area License	1
Restricted	0
Medical Faculty Certification	0
Public Health Certificate	0
<b>Other Professionals</b>	
Licensed Podiatric Physicians	0
Licensed Osteopathic Physicians	5
Dentists	7
<b>Licensed Registered Nurses</b>	456
<b>Pharmacies</b>	5

Source: Florida Department of Health, 2019

Assisted Living Facility	Value
<b>Total ALF Beds</b>	0
Optional State Supplementation (OSS) Beds	0
Non-OSS Beds	0
<b>Total ALF Facilities</b>	0
Facilities with Extended Congregate Care License	0
Facilities with Limited Mental Health License	0
Facilities with Limited Nursing Service License	0

Source: Florida AHCA, 2019

Medically Underserved	Value	Percent
<b>Total Medically Underserved</b>	1,608	13%
Living in Areas Defined as Having Medically Underserved Populations	0	0%
Living in Medically Underserved Areas	1,608	13%

Source: Calculated using U.S. Health Resources & Services Administration and AGID

Health Insurance 65+	Value	Percent
Insured	9,112	99%
Uninsured	93	1%

Source: U.S. Census Bureau, 2013-2017 ACS

Disability Status	Value	Percent
With One Type of Disability	2,115	16%
With Two or More Disabilities	2,305	18%
<b>Total With Any Disability</b>		
Hearing	1,785	14%
Vision	785	6%
Cognitive	1,155	9%
Ambulatory	2,910	23%
Self-Care	1,095	9%
Independent Living	1,595	12%
With No Disabilities	7,420	58%
Probable Alzheimer's Cases (65+)	1,088	11%

Source: AGID 2012-16 ACS

Medicaid & Medicare Beneficiaries	Value	Percent
60+ Medicaid Eligible	1,714	18%
60+ Dual Eligible	1,519	71%

Source: Florida AHCA, 2019

Adult Day Care (ADC)	Value
ADC Facilities	0
Capacity	0

Source: Florida AHCA, 2019

Home Health Agencies	Value
<b>Agencies</b>	1
Medicaid Certified Agencies	0
Medicare Certified Agencies	1
Homemaker and Companion Service Companies	1

Source: Florida AHCA, 2019

## Levy County Health Profile and Medical Resources

Skilled Nursing Facility (SNF) Use	Value
<b>SNFs With Beds</b>	1
Community Beds	1
Sheltered Beds	0
Veteran Administration Beds	0
Other Beds	0
<b>SNF Beds</b>	120
Community Beds	120
Sheltered Beds	0
Veteran Administration Beds	0
Other Beds	0
<b>SNFs With Community Beds</b>	1
Community Bed Days	43,800
Community Patient Days	40,634
Medicaid Patient Days	31,201
Occupancy Rate	93%
Percent Medicaid	77%

The day the patient is admitted is a patient day. A bed day is a day during which a person is confined to a bed and in which the patient stays overnight in a hospital.

Source: Florida AHCA, 2019

Emergency Medical Services (EMS) Providers	Value
Providers	2

EMS providers include air ambulances and ambulances with Basic Life Support (BLS) or Advanced Life Support (ALS).

Source: Florida Department of Health, 2019

Adult Family Care Homes	Value
Homes	2
Beds	7

Source: Florida AHCA, 2019

Memory Disorder Clinics	Value
Total	0

Source: Florida DOEA's Summary of Programs and Services (SOPS), 2019

Dialysis	Value
End-Stage Renal Disease Centers	0

Source: Florida Department of Health, 2019

## Levy County Disaster Preparedness

The disaster preparedness section presents the count and percentage of people age 60 or older living in Census tracts that fall within particular FEMA-designated evacuation zones, as well as the portions of DOEA Home and Community-Based Services (HCBS) clients who reside in these zones. The estimate of electricity-dependent individuals is presented by insurance type to show the number of people who use electricity-dependent medical equipment necessary for things such as survival or mobility. This information can also be used to evaluate the sufficiency of shelters, generators, and evacuation route roadways to handle the needs of seniors and medically fragile adults in emergencies.

Electricity-Dependent	Value
Medicare Beneficiary	559
Medicaid Beneficiary	33

Medicare beneficiary includes the entire Medicare population (65+ and SSI Recipients).

Medicaid beneficiaries are individuals age 60 to 64.

Source: Florida AHCA and U.S. Centers for Medicare & Medicaid Services, 2018

Shelter Resources	Value
<b>Number of General Shelters</b>	25
General Shelter Max Capacity in People	5,322
<b>Number of Special Needs Shelters</b>	2
Special Needs Shelters Max Capacity in People	136

Source: FDEM, 2018

Evacuation Zones	Value	Percent
<b>Total Population Residing in Evac Zone:</b>	0	0%
Zone A	0	0%
Zone B	0	0%
Zone C	0	0%
Zone D	0	0%
Zone E	0	0%
<b>DOEA HCBS Clients</b>	167	100%
Zone A	17	10%
Zone B	6	4%
Zone C	4	2%
Zone D	4	2%
Zone E	9	5%
Lives in an Evac Zone and Has Memory Problems	4	2%
Lives in an Evac Zone and Lives Alone	19	11%

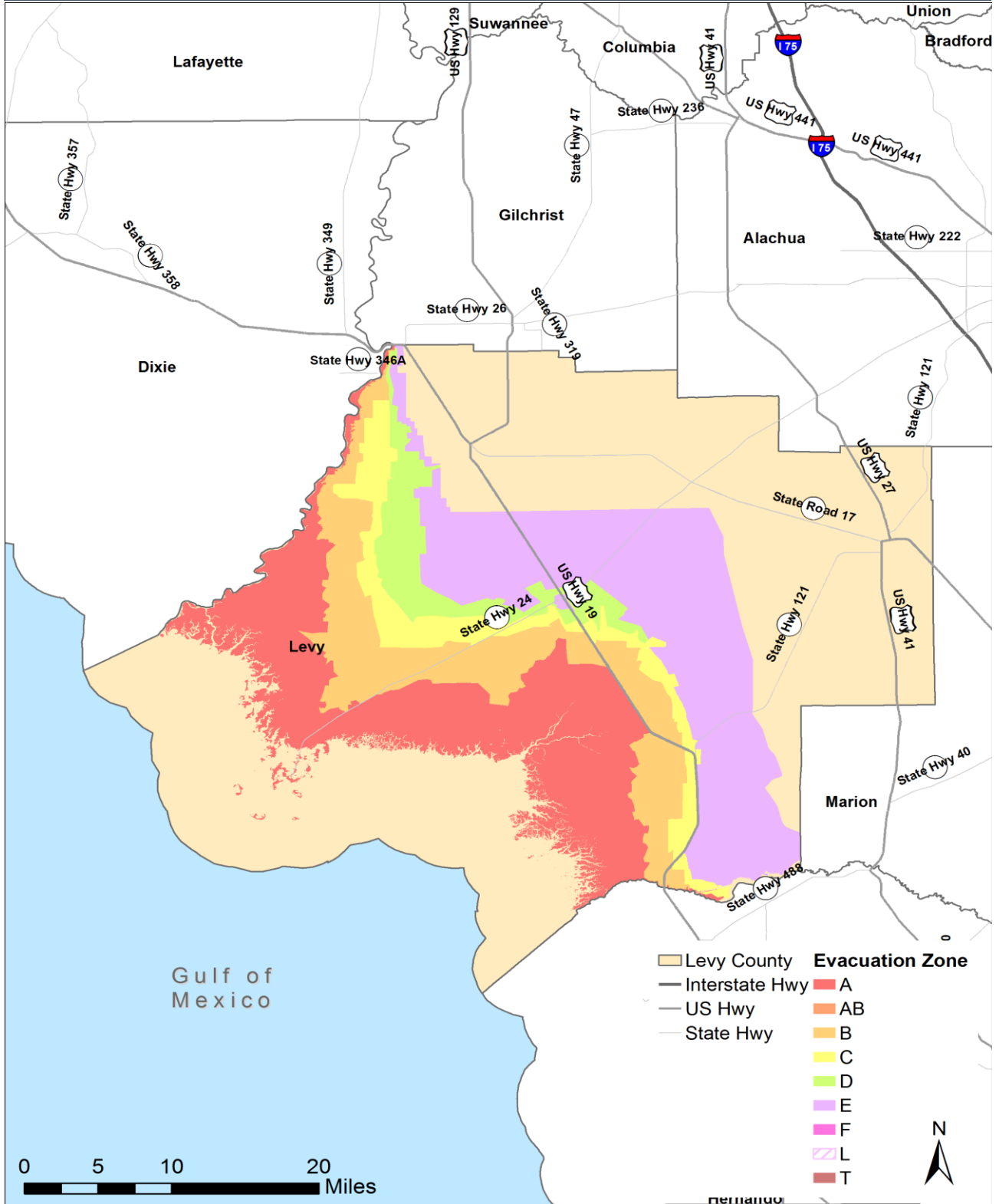
Zones are associated with the following surge heights: Zone A up to 11 feet, Zone B up to 15 feet,

Zone C up to 20 feet, Zone D up to 28 feet, and Zone E up to 35 feet.

Source: Florida DOEA CIRTS, ACS, Florida Division of Emergency Management (FDEM), 2019

## Levy County Disaster Preparedness

### Evacuation Zones



Zones are associated with the following surge heights: Zone A up to 11 feet, Zone B up to 15 feet, Zone C up to 20 feet, Zone D up to 28 feet, and Zone E up to 35 feet.

Source: FDEM, 2018