

2017 Profile of Older Floridians

Washington



Population by Age Category		
All Ages	25,184	100.0%
Under 18	5,051	20.1%
Under 60	19,181	76.2%
18-59	14,130	56.1%
60+	6,003	23.8%
65+	4,368	17.3%
70+	2,931	11.6%
75+	1,729	6.9%
80+	897	3.6%
85+	403	1.6%

Source: Office of Economic and Demographic Research, 2016

Population by Race and Ethnicity		
White	5,352	89.2%
Black	562	9.4%
Other Minorities	89	1.5%
Total Hispanic	60	1.0%
White	55	0.9%
Non-White	5	0.1%
Total Non-Hispanic	5,943	99.0%
Total Racial and Hispanic Minorities ²	706	11.8%

Source: EDR, 2016

Population by Gender		
Male	2,868	47.8%
Female	3,135	52.2%

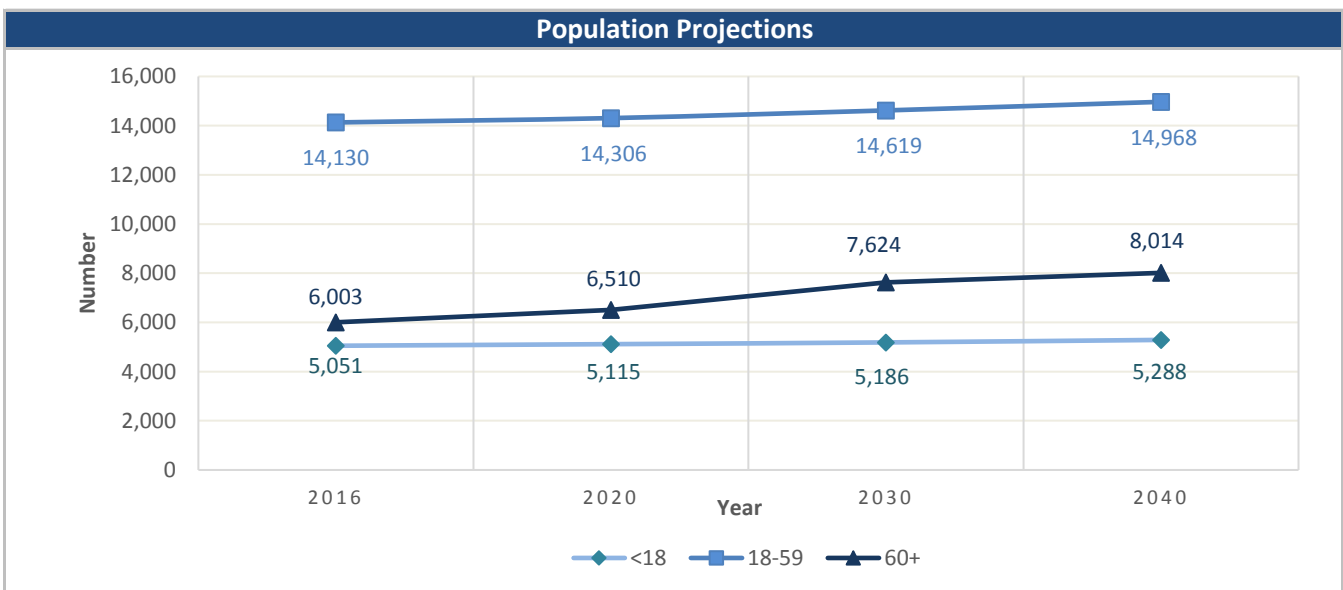
Source: EDR, 2016

English Proficiency	
With Limited English Proficiency ¹	60

Source: DOEA calculations based on EDR and 2010-14 ACS data

Financial Status		%
Below Poverty Guideline	765	12.7%
Below 125% of Poverty Guideline	1,230	20.5%
Minority Below Poverty Guideline	186	3.1%
Minority Below 125% of Poverty Guideline	252	4.2%

Source: DOEA calculations based on EDR and 2010-14 ACS data

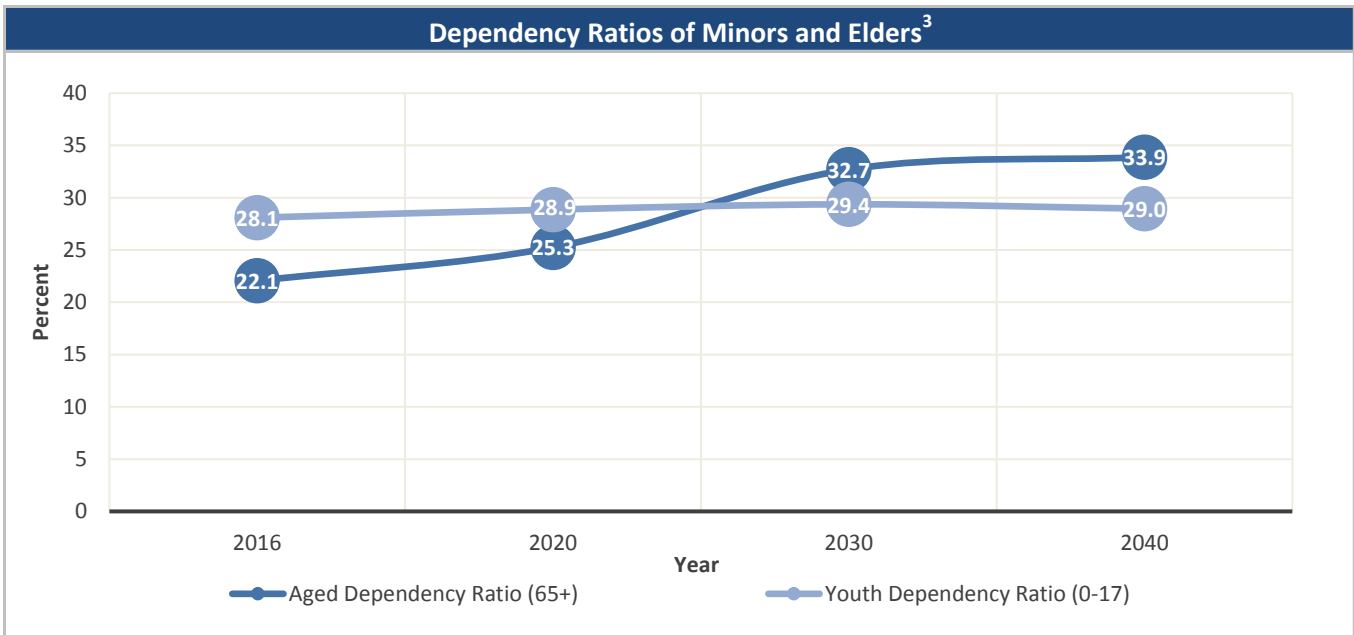


Source: Office of Economic and Demographic Research, 2016

Unless otherwise noted, the data presented in this *Profile* refers to elder populations in Florida age 60 and older.

2017 Profile of Older Floridians

Washington



Source: Office of Economic and Demographic Research, 2016

Grandparents	
Living With Own Grandchildren*	277
Grandparent Responsible for Own Grandchildren*	62
Grandparent Not Responsible for Own Grandchildren*	215
Not Living With Own Grandchildren*	5,726

*Grandchildren Under Age 18

Source: DOEA calculations based on EDR and 2010-14 ACS data

SNAP or Food Stamps	
Participants	547
Potentially Eligible	1,230
Participation Rate	44.5%

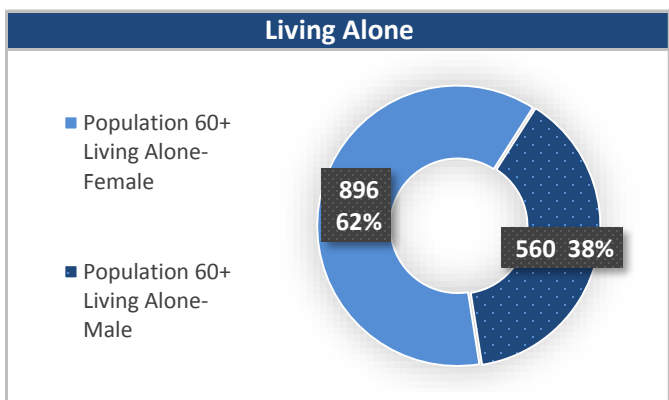
Source: Florida Department of Children and Families, 2016

Rural Designation	
Rural (Yes/No)	YES

Source: Rural Economic Development Initiative

Medically Underserved (65+)	
Total Medically Underserved ⁴	3,376
Living in Areas Defined as Having Medically Underserved Populations	-
Living in Medically Underserved Areas	3,376

Source: DOH and U.S. HHS, Data as of 8/25/2017



Source: DOEA calculations based on EDR and 2010-14 ACS data

Unless otherwise noted, the data presented in this *Profile* refers to elder populations in Florida age 60 and older.

2017 Profile of Older Floridians

Washington

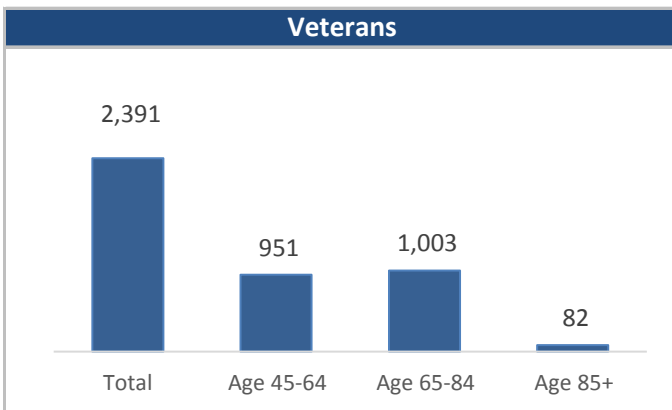


Florida Registered Voters	
Elder Voters	4,994
Percent of All Voters	32.2%

Source: FL Department of State, 2016

Florida Driver's License	
Elder Drivers	5,499
Percent of All Drivers	30.8%

Source: FL Department of Highway Safety & Motor Vehicles, 2016



Source: FL Department of Veterans' Affairs

Households With Cost Burden Above 30% and Income Below 50% Area Median Income (65+) ⁵	
Elder Households	2,831
Percent of All Households	13.9%

Source: The Shimberg Center for Housing Studies, 2016

Cost of Living, Annual Expenses(65+) ⁶	
Single Elders	
Owner without Mortgage	\$19,632
Renter, one bedroom	\$20,988
Owner with Mortgage	\$29,364
Elder Couple	
Owner without Mortgage	\$31,620
Renter, one bedroom	\$32,976
Owner with Mortgage	\$41,352

Source: Wider Opportunities for Women Elder Economic Security Standard™ Index (Elder Index), Data as of 8/16/2017

Retirement (65+)	
Disability Insurance (OASDI) Beneficiaries	2,888
Percent OASDI Beneficiaries	66.1%

Source: DOEA calculations based on EDR and the U.S. Social Security Administration data, 2016

Median Household Income for All Ages	
2011-2015	\$38,970

Source: U.S. Census Bureau, 2011-2015 American Community Survey 5-Year Estimates

Disability Status	
With One Type of Disability ⁷	1,057
With Two or More Disabilities	1,529
Total With Any Disability	
Hearing	1,169
Vision	427
Cognitive	663
Ambulatory	1,686
Self-Care	618
Independent Living	1,057
With No Disabilities	3,412
Probable Alzheimer's Cases (65+) ⁸	487

Source: DOEA calculations based on EDR, 2010-14 ACS data, and Alzheimer's Disease Facts and Figures Report, 2017

Medical Professionals	
Medical Doctors	
Licensed	12
Limited License	0
Critical Need Area License	0
Restricted	0
Medical Faculty Certification	0
Public Health Certificate	0
Specialties	
Licensed Podiatric Physicians	0
Licensed Osteopathic Physicians	0
Licensed Chiropractic Physicians	2
Licensed Registered Nurses	220

Source: Florida Department of Health, 2016

Unless otherwise noted, the data presented in this *Profile* refers to elder populations in Florida age 60 and older.

2017 Profile of Older Floridians

Washington



Skilled Nursing Facility (SNF) Utilization	
SNF Beds	180
Community Beds	180
Sheltered Beds	-
Veterans' Affairs Administration Beds	-
Other Beds	-
SNFs With Beds	1
Community Beds	1
Sheltered Beds	-
Veterans' Affairs Administration Beds	-
Other Beds	-
SNFs With Community Beds	1
Community Bed Days	65,880
Community Patient Days	57,342
Medicaid Patient Days	45,592
Occupancy Rate	87.0%
Percent Medicaid	79.5%

Assisted Living Facility	
Total Beds	166
OSS Beds ⁹	150
Non-OSS Beds	16
Total Facilities	8
Facilities with ECC License ¹⁰	0
Facilities with LMH License ¹¹	7
Facilities with LNS License ¹²	0

Adult Family Care Homes	
Homes	-
Beds	-

Ambulatory Surgical Centers	
Facilities	-
Operating Rooms	-
Recovery Beds	-

Home Health Agencies	
Agencies	2
Medicaid Certified Agencies	1
Medicare Certified Agencies	2

Hospitals	
Hospitals	1
Hospitals with Skilled Nursing Units	1
Hospital Beds	59
Skilled Nursing Unit Beds	59

Homemaker & Companion Service Companies	
Companies	1

Medicaid & Medicare Eligibility	
Medicaid Eligible - All Ages	6,051
60+ Medicaid Eligible	933
Dual Eligible - All Ages	1,308
60+ Dual Eligible	829

Adult Day Care	
Facilities	-
Capacity	-

Source for Page: AHCA, 2016

2017 Profile of Older Floridians

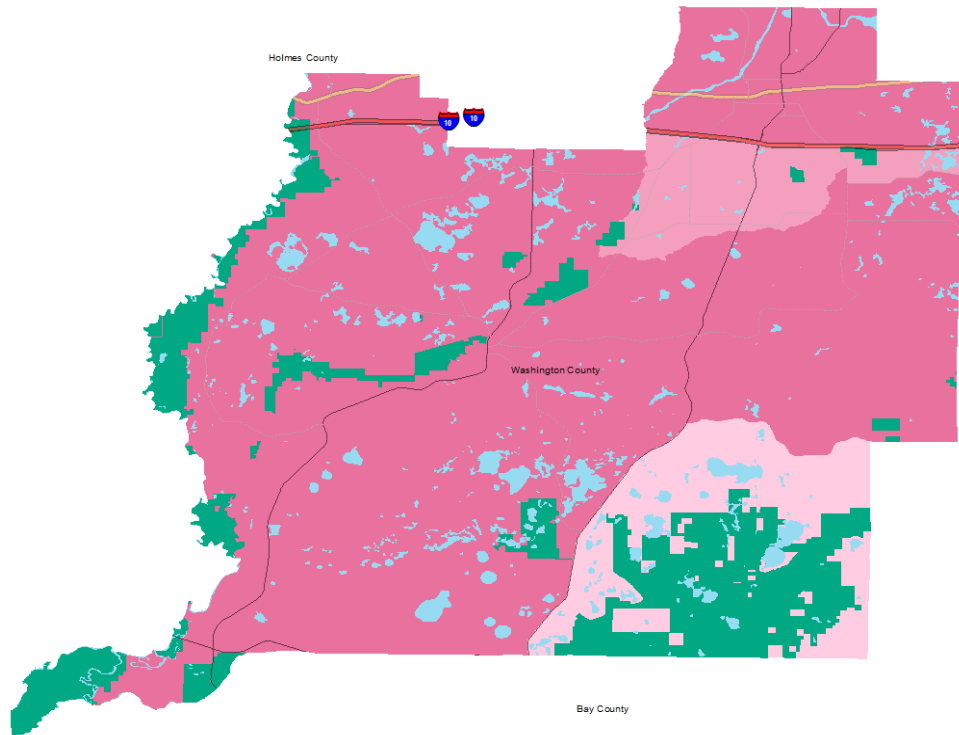
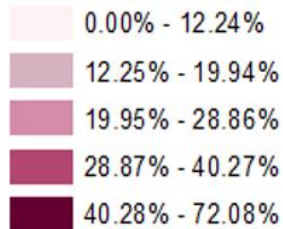
Washington



Elder Needs Index

Elder Needs Index (all factors)

ENI



The Elder Needs Index (ENI) is a composite measure that includes: (1) the percentage of the 60 and older population that is age 85 and older; (2) the percentage of the 55 and older population who are members of racial or ethnic minority groups; (3) the percentage of the 65 and older population with one or more disability; and (4) the percentage of the 55 and older population living below 125% of the Federal Poverty Level. The Index is an averaged score that indicates senior citizens' overall level of risk for a probable need of social services within a geographic area. It is not a percentage of the area's population. The green areas of the map represent current conservation land such as national parks, state forests, wildlife management areas, local and private preserves. The blue areas of the map represent current water features such as lakes, streams, rivers, and coastlines. Complete maps available at http://elderaffairs.state.fl.us/doa/eni_home.php

Source: Florida Department of Elder Affairs using U.S. Census Bureau, 2008-12 ACS data

Useful Websites

[Office of Economic & Demographic Research \(EDR\)](#)
[U.S. Census Bureau, American Community Survey](#)
[U.S. Census Bureau, Quick Facts](#)
[Agency for Health Care Administration \(AHCA\)](#)

[FL Division of Emergency Management \(Shelters\)](#)
[Florida Housing Data Clearinghouse](#)
[County Chronic Disease Profile](#)

2017 Profile of Older Floridians

Washington



¹ Those who report speaking English "Not well" or "Not at all" are defined as having Limited English Proficiency (LEP) in this profile.

² Total Minorities = (60+ Population) - (White Non-Hispanic 60+)

³ A "dependency ratio" is commonly depicted as a ratio of workers to non-workers. Rather than using labor-force participation rates, which fluctuate, a stable dependency ratio can be estimated by using the number of individuals in the population who fall into age groups generally aligned with school-aged kids, working age adults, and retired seniors. For this graphic, working age adults (defined as 18-59) were compared to minors (age 0-17)(youth dependency ratio) and seniors (age 65+)(aged dependency ratio).

⁴ Medically Underserved Areas/Populations are areas or populations designated by Health Resources & Services Administration(HRSA) as having too few primary care providers, high infant mortality, high poverty or a high elderly population.

⁵ Households age 65 and older paying more than 30 percent of income for housing costs (including utilities) and have an income below 50 percent of the area median income.

⁶ Wider Opportunities for Women Elder Economic Security Standard™ Index (Elder Index) measures how much income retired older adults require to meet their basic needs without public or private assistance. The Elder Index measures basic expenses for elders age 65+ living in the community, not in institutions. Annual expenses include: housing, including utilities, taxes, insurance; food; transportation; health care, based on good health; and miscellaneous. Data found at <http://www.basiceconomicsecurity.org/EI/>

⁷ With One Type of Disability: 60+ people who have only one type of disability

⁸ Probable Alzheimer's Cases = (65-74 Population x 0.035430) + (75-84 Population x 0.168209) + (85+ Population x 0.422937) Alzheimer's by Age in 2017 Alzheimer's Disease Facts and Figures Report used to develop calculation can be found at: http://www.alz.org/documents_custom/facts_2017/statesheet_florida.pdf?type=interior_map&facts=undefined&facts=facts

⁹ OSS Beds: Optional State Supplementation Beds. Optional State Supplementation (OSS) is a cash assistance program. Its purpose is to supplement a person's income to help pay for costs in an assisted living facility, mental health residential treatment facility, and adult family care home. It is NOT a Medicaid program.

¹⁰ ECC License: Extended Congregate Care License. The ECC license is a specialty license that enables a facility to provide, directly or through contract, services beyond those permissible under the standard license, including acts performed by licensed nurses, and supportive services defined by rule to persons who otherwise would be disqualified from continued residence in a facility licensed under this part.

¹¹ LMH License: Limited Mental Health License. Any facility intending to admit three or more mental health residents must apply for and obtain a limited mental health license from AHCA's Assisted Living Unit before accepting the third mental health resident.

¹² LNS License: Limited Nursing Services License. The LNS license is a specialty license that enables a facility to provide a select number of nursing services.