

# 2017 Profile of Older Floridians

Volusia



Population by Age Category		
All Ages	521,997	100.0%
Under 18	94,633	18.1%
Under 60	357,842	68.6%
18-59	263,209	50.4%
60+	164,155	31.4%
65+	123,349	23.6%
70+	85,403	16.4%
75+	54,875	10.5%
80+	32,947	6.3%
85+	17,573	3.4%

Source: Office of Economic and Demographic Research, 2016

Population by Race and Ethnicity		
White	151,098	92.0%
Black	10,737	6.5%
Other Minorities	2,320	1.4%
Total Hispanic	10,570	6.4%
White	9,564	5.8%
Non-White	1,006	0.6%
Total Non-Hispanic	153,585	93.6%
Total Racial and Hispanic Minorities <sup>2</sup>	22,621	13.8%

Source: EDR, 2016

Population by Gender		
Male	75,653	46.1%
Female	88,502	53.9%

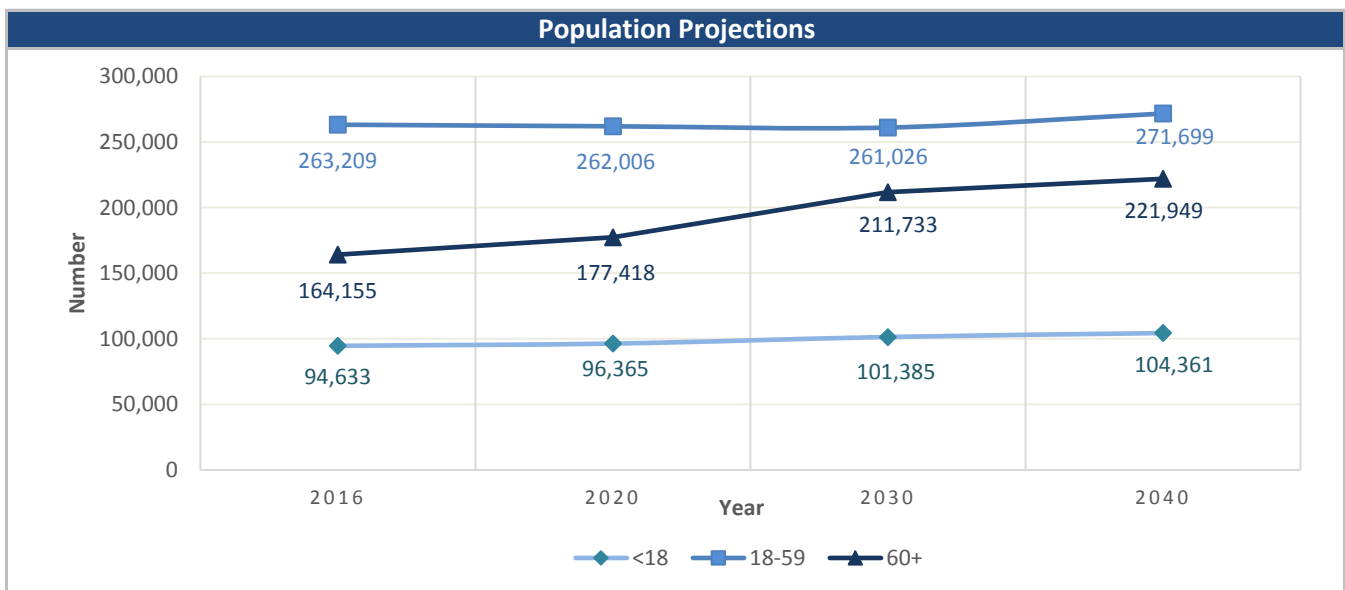
Source: EDR, 2016

English Proficiency	
With Limited English Proficiency <sup>1</sup>	3,015

Source: DOEA calculations based on EDR and 2010-14 ACS data

Financial Status		%
Below Poverty Guideline	15,329	9.3%
Below 125% of Poverty Guideline	23,726	14.5%
Minority Below Poverty Guideline	3,620	2.2%
Minority Below 125% of Poverty Guideline	4,798	2.9%

Source: DOEA calculations based on EDR and 2010-14 ACS data

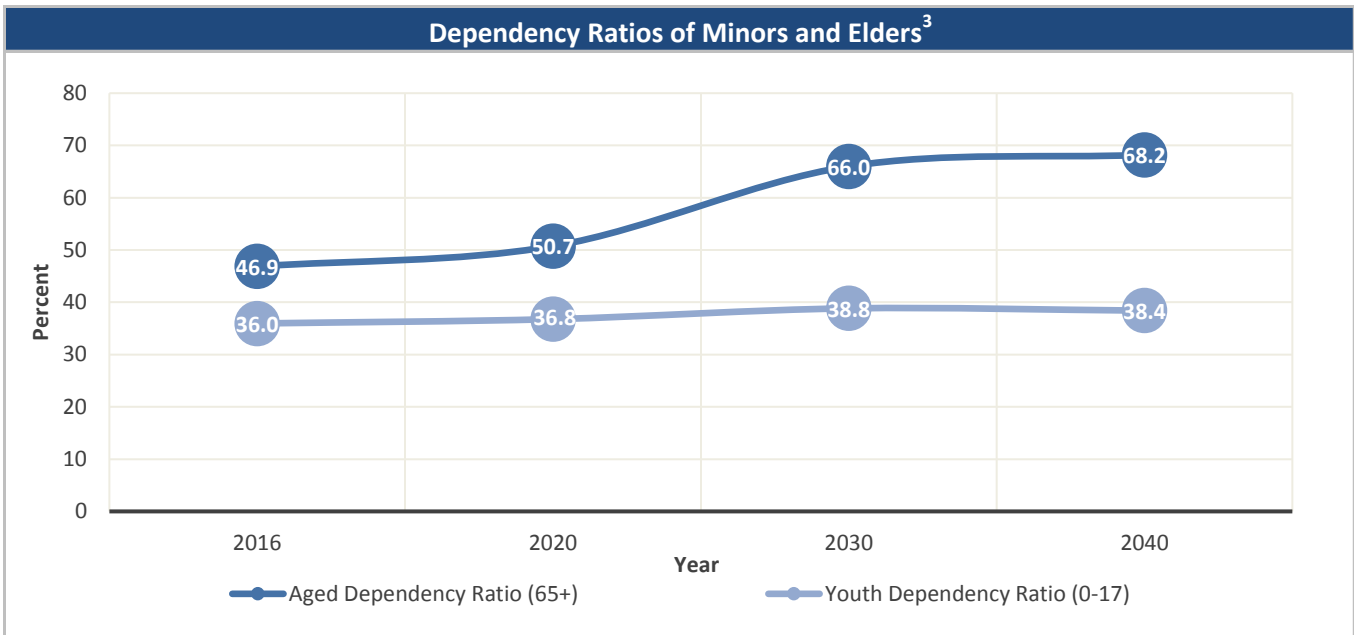


Source: Office of Economic and Demographic Research, 2016

Unless otherwise noted, the data presented in this *Profile* refers to elder populations in Florida age 60 and older.

# 2017 Profile of Older Floridians

Volusia



Source: Office of Economic and Demographic Research, 2016

Grandparents	
Living With Own Grandchildren*	6,445
Grandparent Responsible for Own Grandchildren*	2,383
Grandparent Not Responsible for Own Grandchildren*	4,062
Not Living With Own Grandchildren*	157,710

\*Grandchildren Under Age 18

Source: DOEA calculations based on EDR and 2010-14 ACS data

SNAP or Food Stamps	
Participants	12,152
Potentially Eligible	23,726
Participation Rate	51.2%

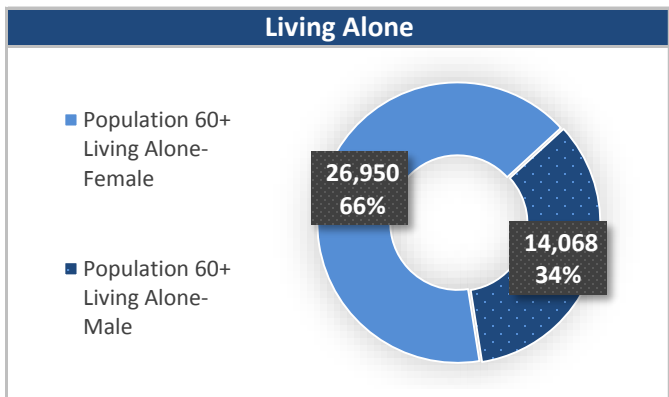
Source: Florida Department of Children and Families, 2016

Rural Designation	
Rural (Yes/No)	NO

Source: Rural Economic Development Initiative

Medically Underserved (65+)	
Total Medically Underserved <sup>4</sup>	37,679
Living in Areas Defined as Having Medically Underserved Populations	37,679
Living in Medically Underserved Areas	0

Source: DOH and U.S. HHS, Data as of 8/25/2017



Source: DOEA calculations based on EDR and 2010-14 ACS data

Unless otherwise noted, the data presented in this *Profile* refers to elder populations in Florida age 60 and older.

# 2017 Profile of Older Floridians

Volusia

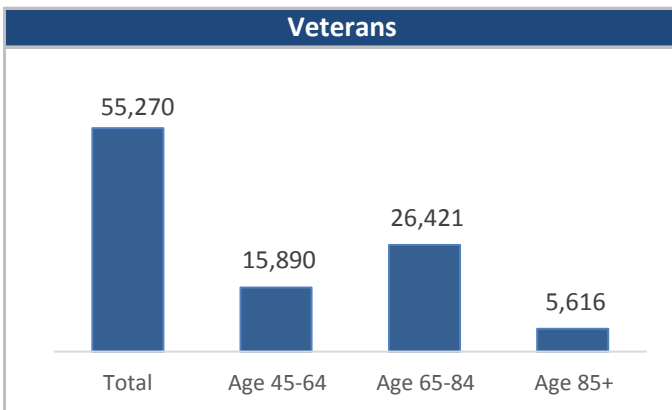


Florida Registered Voters	
Elder Voters	143,746
Percent of All Voters	38.8%

Source: FL Department of State, 2016

Florida Driver's License	
Elder Drivers	155,637
Percent of All Drivers	35.6%

Source: FL Department of Highway Safety & Motor Vehicles, 2016



Source: FL Department of Veterans' Affairs

Households With Cost Burden Above 30% and Income Below 50% Area Median Income (65+) <sup>5</sup>	
Elder Households	75,526
Percent of All Households	17.5%

Source: The Shimberg Center for Housing Studies, 2016

Cost of Living, Annual Expenses(65+) <sup>6</sup>	
<b>Single Elders</b>	
Owner without Mortgage	\$17,988
Renter, one bedroom	\$21,756
Owner with Mortgage	\$26,424
<b>Elder Couple</b>	
Owner without Mortgage	\$27,384
Renter, one bedroom	\$31,152
Owner with Mortgage	\$35,820

Source: Wider Opportunities for Women Elder Economic Security Standard™ Index (Elder Index), Data as of 8/16/2017

Retirement (65+)	
Disability Insurance (OASDI) Beneficiaries	92,856
Percent OASDI Beneficiaries	75.3%

Source: DOEA calculations based on EDR and the U.S. Social Security Administration data, 2016

Median Household Income for All Ages	
2011-2015	\$41,117

Source: U.S. Census Bureau, 2011-2015 American Community Survey 5-Year Estimates

Disability Status	
With One Type of Disability <sup>7</sup>	23,608
With Two or More Disabilities	26,844
<b>Total With Any Disability</b>	
Hearing	20,366
Vision	9,440
Cognitive	13,162
Ambulatory	32,058
Self-Care	10,823
Independent Living	20,429
With No Disabilities	113,704
Probable Alzheimer's Cases (65+) <sup>8</sup>	16,133

Source: DOEA calculations based on EDR, 2010-14 ACS data, and Alzheimer's Disease Facts and Figures Report, 2017

Medical Professionals	
<b>Medical Doctors</b>	
Licensed	994
Limited License	0
Critical Need Area License	6
Restricted	0
Medical Faculty Certification	0
Public Health Certificate	0
<b>Specialties</b>	
Licensed Podiatric Physicians	30
Licensed Osteopathic Physicians	107
Licensed Chiropractic Physicians	284
<b>Licensed Registered Nurses</b>	<b>7,215</b>

Source: Florida Department of Health, 2016

Unless otherwise noted, the data presented in this *Profile* refers to elder populations in Florida age 60 and older.

# 2017 Profile of Older Floridians

Volusia



Skilled Nursing Facility (SNF) Utilization	
<b>SNF Beds</b>	3,427
Community Beds	3,202
Sheltered Beds	105
Veterans' Affairs Administration Beds	120
Other Beds	-
<b>SNFs With Beds</b>	33
Community Beds	29
Sheltered Beds	3
Veterans' Affairs Administration Beds	1
Other Beds	-
<b>SNFs With Community Beds</b>	29
Community Bed Days	1,171,932
Community Patient Days	983,526
Medicaid Patient Days	625,486
Occupancy Rate	83.9%
Percent Medicaid	63.6%

Assisted Living Facility	
<b>Total Beds</b>	3,537
OSS Beds <sup>9</sup>	383
Non-OSS Beds	3,154
<b>Total Facilities</b>	96
Facilities with ECC License <sup>10</sup>	5
Facilities with LMH License <sup>11</sup>	10
Facilities with LNS License <sup>12</sup>	16

Adult Family Care Homes	
Homes	11
Beds	47

Ambulatory Surgical Centers	
Facilities	13
Operating Rooms	30
Recovery Beds	94

Home Health Agencies	
<b>Agencies</b>	38
Medicaid Certified Agencies	8
Medicare Certified Agencies	22

Hospitals	
<b>Hospitals</b>	9
Hospitals with Skilled Nursing Units	1
<b>Hospital Beds</b>	1,512
Skilled Nursing Unit Beds	80

Homemaker & Companion Service Companies	
Companies	29

Medicaid & Medicare Eligibility	
Medicaid Eligible - All Ages	105,077
60+ Medicaid Eligible	15,835
Dual Eligible - All Ages	21,199
60+ Dual Eligible	14,291

Adult Day Care	
Facilities	2
Capacity	95

Source for Page: AHCA, 2016

# 2017 Profile of Older Floridians

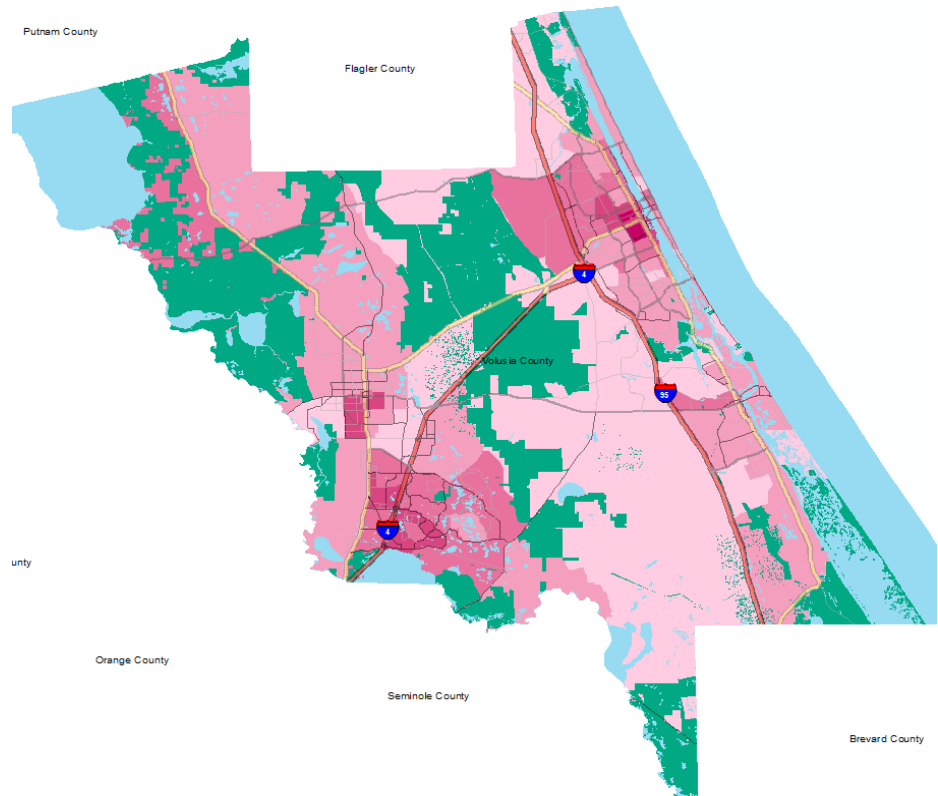
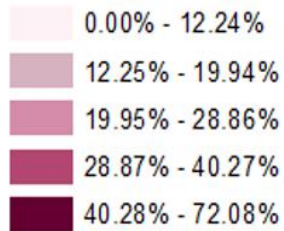
Volusia



## Elder Needs Index

### Elder Needs Index (all factors)

#### ENI



The Elder Needs Index (ENI) is a composite measure that includes: (1) the percentage of the 60 and older population that is age 85 and older; (2) the percentage of the 55 and older population who are members of racial or ethnic minority groups; (3) the percentage of the 65 and older population with one or more disability; and (4) the percentage of the 55 and older population living below 125% of the Federal Poverty Level. The Index is an averaged score that indicates senior citizens' overall level of risk for a probable need of social services within a geographic area. It is not a percentage of the area's population. The green areas of the map represent current conservation land such as national parks, state forests, wildlife management areas, local and private preserves. The blue areas of the map represent current water features such as lakes, streams, rivers, and coastlines. Complete maps available at [http://elderaffairs.state.fl.us/doea/eni\\_home.php](http://elderaffairs.state.fl.us/doea/eni_home.php)

Source: Florida Department of Elder Affairs using U.S. Census Bureau, 2008-12 ACS data

### Useful Websites

- [Office of Economic & Demographic Research \(EDR\)](#)
- [U.S. Census Bureau, American Community Survey](#)
- [U.S. Census Bureau, Quick Facts](#)
- [Agency for Health Care Administration \(AHCA\)](#)

- [FL Division of Emergency Management \(Shelters\)](#)
- [Florida Housing Data Clearinghouse](#)
- [County Chronic Disease Profile](#)

Unless otherwise noted, the data presented in this *Profile* refers to elder populations in Florida age 60 and older.

# 2017 Profile of Older Floridians

Volusia



<sup>1</sup> Those who report speaking English "Not well" or "Not at all" are defined as having Limited English Proficiency (LEP) in this profile.

<sup>2</sup> Total Minorities = (60+ Population) - (White Non-Hispanic 60+)

<sup>3</sup> A "dependency ratio" is commonly depicted as a ratio of workers to non-workers. Rather than using labor-force participation rates, which fluctuate, a stable dependency ratio can be estimated by using the number of individuals in the population who fall into age groups generally aligned with school-aged kids, working age adults, and retired seniors. For this graphic, working age adults (defined as 18-59) were compared to minors (age 0-17)(youth dependency ratio) and seniors (age 65+)(aged dependency ratio).

<sup>4</sup> Medically Underserved Areas/Populations are areas or populations designated by Health Resources & Services Administration(HRSA) as having too few primary care providers, high infant mortality, high poverty or a high elderly population.

<sup>5</sup> Households age 65 and older paying more than 30 percent of income for housing costs (including utilities) and have an income below 50 percent of the area median income.

<sup>6</sup> Wider Opportunities for Women Elder Economic Security Standard™ Index (Elder Index) measures how much income retired older adults require to meet their basic needs without public or private assistance. The Elder Index measures basic expenses for elders age 65+ living in the community, not in institutions. Annual expenses include: housing, including utilities, taxes, insurance; food; transportation; health care, based on good health; and miscellaneous. Data found at <http://www.basiceconomicsecurity.org/EI/>

<sup>7</sup> With One Type of Disability: 60+ people who have only one type of disability

<sup>8</sup> Probable Alzheimer's Cases = (65-74 Population x 0.035430) + (75-84 Population x 0.168209) + (85+ Population x 0.422937) Alzheimer's by Age in 2017 Alzheimer's Disease Facts and Figures Report used to develop calculation can be found at: [http://www.alz.org/documents\\_custom/facts\\_2017/statesheet\\_florida.pdf?type=interior\\_map&facts=undefined&facts=facts](http://www.alz.org/documents_custom/facts_2017/statesheet_florida.pdf?type=interior_map&facts=undefined&facts=facts)

<sup>9</sup> OSS Beds: Optional State Supplementation Beds. Optional State Supplementation (OSS) is a cash assistance program. Its purpose is to supplement a person's income to help pay for costs in an assisted living facility, mental health residential treatment facility, and adult family care home. It is NOT a Medicaid program.

<sup>10</sup> ECC License: Extended Congregate Care License. The ECC license is a specialty license that enables a facility to provide, directly or through contract, services beyond those permissible under the standard license, including acts performed by licensed nurses, and supportive services defined by rule to persons who otherwise would be disqualified from continued residence in a facility licensed under this part.

<sup>11</sup> LMH License: Limited Mental Health License. Any facility intending to admit three or more mental health residents must apply for and obtain a limited mental health license from AHCA's Assisted Living Unit before accepting the third mental health resident.

<sup>12</sup> LNS License: Limited Nursing Services License. The LNS license is a specialty license that enables a facility to provide a select number of nursing services.