

2017 Profile of Older Floridians

PSA 7 Total



Population by Age Category		
All Ages	2,676,539	100.0%
Under 18	592,232	22.1%
Under 60	2,126,366	79.4%
18-59	1,534,134	57.3%
60+	550,173	20.6%
65+	393,063	14.7%
70+	263,752	9.9%
75+	167,146	6.2%
80+	98,540	3.7%
85+	50,234	1.9%

Source: Office of Economic and Demographic Research, 2016

Population by Race and Ethnicity		
White	458,375	83.3%
Black	69,784	12.7%
Other Minorities	22,014	4.0%
Total Hispanic	93,426	17.0%
White	83,831	15.2%
Non-White	9,595	1.7%
Total Non-Hispanic	456,747	83.0%
Total Racial and Hispanic Minorities ²	175,629	31.9%

Source: EDR, 2016

Population by Gender		
Male	248,784	45.2%
Female	301,389	54.8%

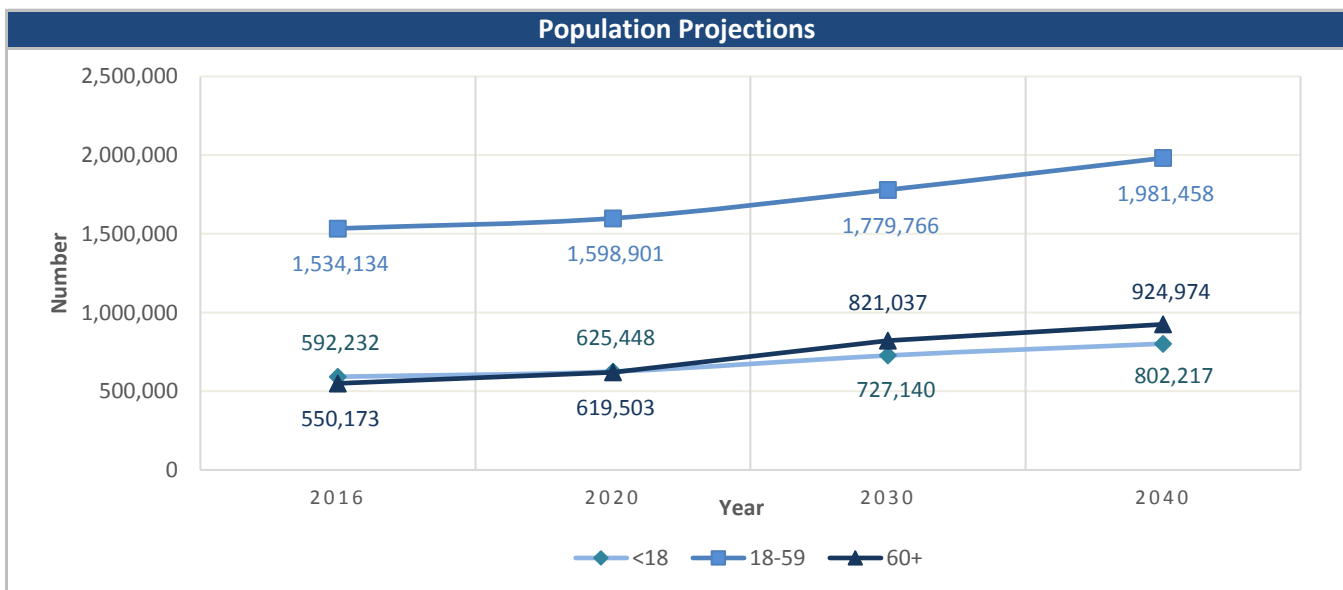
Source: EDR, 2016

English Proficiency	
With Limited English Proficiency ¹	42,432

Source: DOEA calculations based on EDR and 2010-14 ACS data

Financial Status		%
Below Poverty Guideline	53,327	9.7%
Below 125% of Poverty Guideline	81,253	14.8%
Minority Below Poverty Guideline	28,132	5.1%
Minority Below 125% of Poverty Guideline	41,382	7.5%

Source: DOEA calculations based on EDR and 2010-14 ACS data

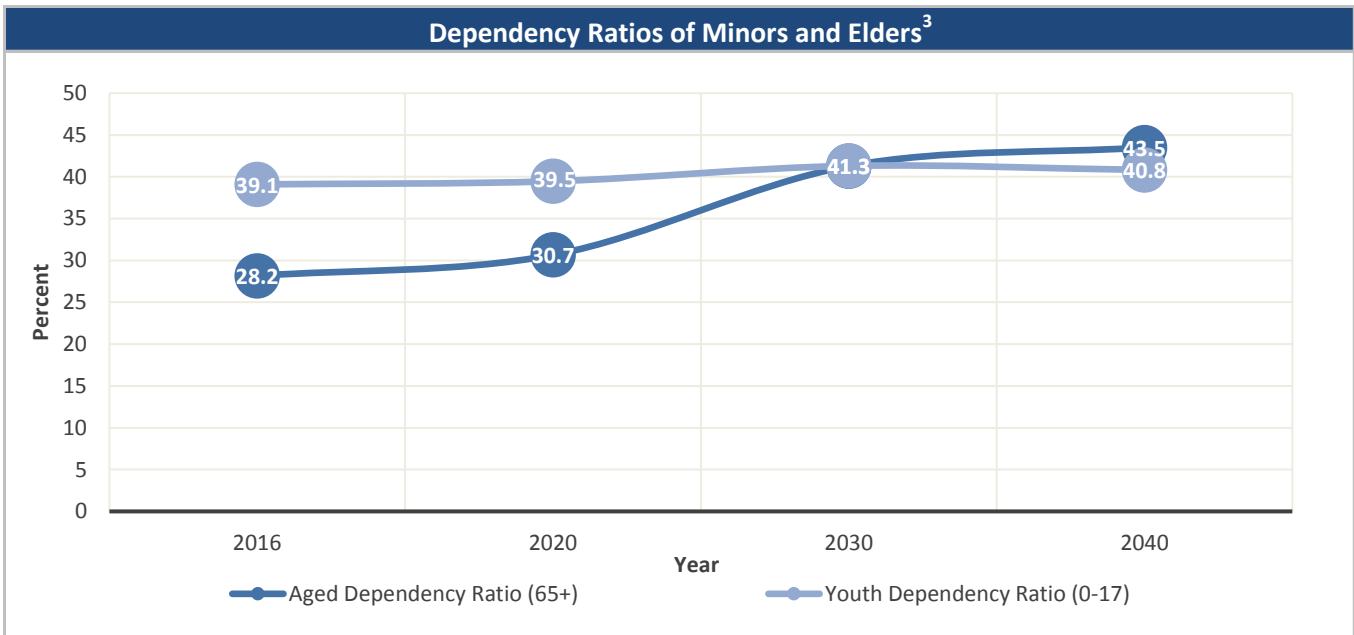


Source: Office of Economic and Demographic Research, 2016

Unless otherwise noted, the data presented in this *Profile* refers to elder populations in Florida age 60 and older.

2017 Profile of Older Floridians

PSA 7 Total



Source: Office of Economic and Demographic Research, 2016

Grandparents	
Living With Own Grandchildren*	38,382
Grandparent Responsible for Own Grandchildren*	9,522
Grandparent Not Responsible for Own Grandchildren*	28,860
Not Living With Own Grandchildren*	511,785

*Grandchildren Under Age 18

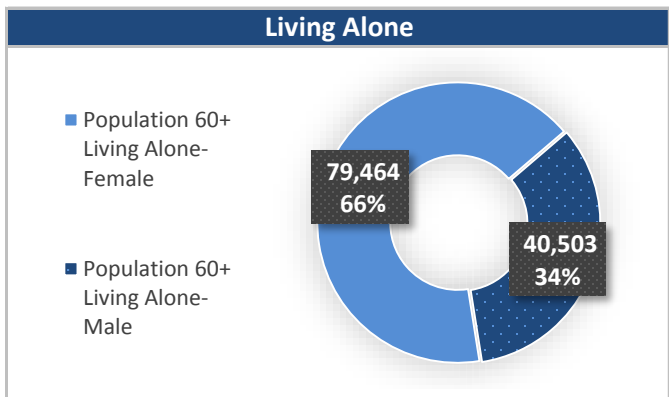
Source: DOEA calculations based on EDR and 2010-14 ACS data

SNAP or Food Stamps	
Participants	59,067
Potentially Eligible	81,253
Participation Rate	72.7%

Source: Florida Department of Children and Families, 2016

Medically Underserved (65+)	
Total Medically Underserved ⁴	95,158
Living in Areas Defined as Having Medically Underserved Populations	59,059
Living in Medically Underserved Areas	36,099

Source: DOH and U.S. HHS, Data as of 8/25/2017



Source: DOEA calculations based on EDR and 2010-14 ACS data

Unless otherwise noted, the data presented in this *Profile* refers to elder populations in Florida age 60 and older.

2017 Profile of Older Floridians

PSA 7 Total

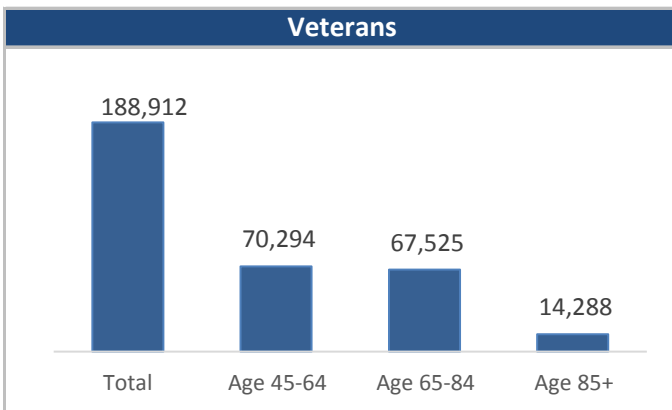


Florida Registered Voters	
Elder Voters	457,624
Percent of All Voters	27.1%

Source: FL Department of State, 2016

Florida Driver's License	
Elder Drivers	502,345
Percent of All Drivers	24.7%

Source: FL Department of Highway Safety & Motor Vehicles, 2016



Source: FL Department of Veterans' Affairs

Households With Cost Burden Above 30% and Income Below 50% Area Median Income (65+) ⁵	
Elder Households	222,818
Percent of All Households	19.5%

Source: The Shimberg Center for Housing Studies, 2016

Cost of Living, Annual Expenses(65+) ⁶	
Single Elders	
Owner without Mortgage	\$18,165
Renter, one bedroom	\$22,488
Owner with Mortgage	\$28,254
Elder Couple	
Owner without Mortgage	\$27,678
Renter, one bedroom	\$31,980
Owner with Mortgage	\$37,746

Source: Wider Opportunities for Women Elder Economic Security Standard™ Index (Elder Index), Data as of 8/16/2017

Retirement (65+)	
Disability Insurance (OASDI) Beneficiaries	280,061
Percent OASDI Beneficiaries	71.3%

Source: DOEA calculations based on EDR and the U.S. Social Security Administration data, 2016

Median Household Income for All Ages	
2011-2015	\$49,533

Source: U.S. Census Bureau, 2011-2015 American Community Survey 5-Year Estimates

Disability Status	
With One Type of Disability ⁷	78,193
With Two or More Disabilities	90,038
Total With Any Disability	
Hearing	57,479
Vision	31,542
Cognitive	46,095
Ambulatory	110,981
Self-Care	35,061
Independent Living	69,933
With No Disabilities	381,942
Probable Alzheimer's Cases (65+) ⁸	48,916

Source: DOEA calculations based on EDR, 2010-14 ACS data, and Alzheimer's Disease Facts and Figures Report, 2017

Medical Professionals	
Medical Doctors	
Licensed	5,853
Limited License	10
Critical Need Area License	137
Restricted	0
Medical Faculty Certification	0
Public Health Certificate	0
Specialties	
Licensed Podiatric Physicians	115
Licensed Osteopathic Physicians	620
Licensed Chiropractic Physicians	602
Licensed Registered Nurses	29,333

Source: Florida Department of Health, 2016

Unless otherwise noted, the data presented in this *Profile* refers to elder populations in Florida age 60 and older.

2017 Profile of Older Floridians

PSA 7 Total



Skilled Nursing Facility (SNF) Utilization	
SNF Beds	9,232
Community Beds	9,071
Sheltered Beds	161
Veterans' Affairs Administration Beds	-
Other Beds	-
SNFs With Beds	76
Community Beds	72
Sheltered Beds	4
Veterans' Affairs Administration Beds	-
Other Beds	-
SNFs With Community Beds	72
Community Bed Days	3,298,608
Community Patient Days	2,975,290
Medicaid Patient Days	1,814,280
Occupancy Rate	90.2%
Percent Medicaid	61.0%

Assisted Living Facility	
Total Beds	9,664
OSS Beds ⁹	938
Non-OSS Beds	8,726
Total Facilities	335
Facilities with ECC License ¹⁰	35
Facilities with LMH License ¹¹	40
Facilities with LNS License ¹²	81

Adult Family Care Homes	
Homes	50
Beds	233

Ambulatory Surgical Centers	
Facilities	46
Operating Rooms	123
Recovery Beds	389

Home Health Agencies	
Agencies	171
Medicaid Certified Agencies	45
Medicare Certified Agencies	91

Hospitals	
Hospitals	35
Hospitals with Skilled Nursing Units	0
Hospital Beds	7,723
Skilled Nursing Unit Beds	0

Homemaker & Companion Service Companies	
Companies	199

Medicaid & Medicare Eligibility	
Medicaid Eligible - All Ages	530,707
60+ Medicaid Eligible	68,978
Dual Eligible - All Ages	88,654
60+ Dual Eligible	60,345

Adult Day Care	
Facilities	18
Capacity	915

Source for Page: AHCA, 2016

2017 Profile of Older Floridians

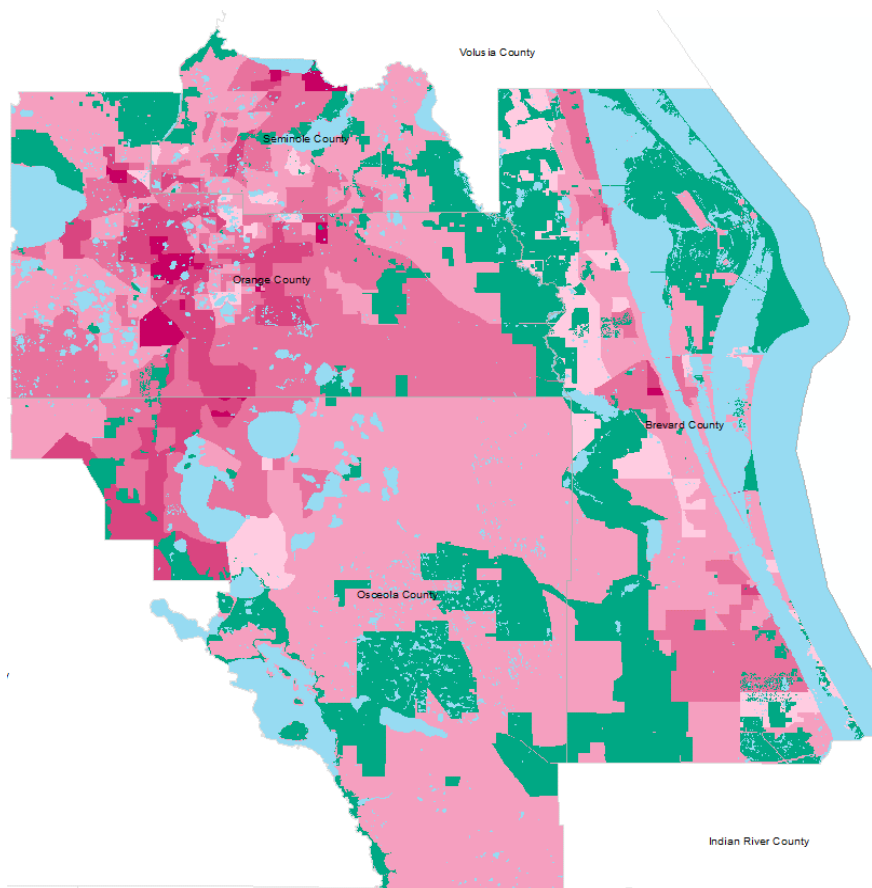
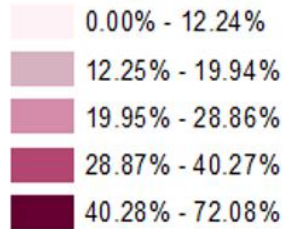
PSA 7 Total



Elder Needs Index

Elder Needs Index (all factors)

ENI



The Elder Needs Index (ENI) is a composite measure that includes: (1) the percentage of the 60 and older population that is age 85 and older; (2) the percentage of the 55 and older population who are members of racial or ethnic minority groups; (3) the percentage of the 65 and older population with one or more disability; and (4) the percentage of the 55 and older population living below 125% of the Federal Poverty Level. The Index is an averaged score that indicates senior citizens' overall level of risk for a probable need of social services within a geographic area. It is not a percentage of the area's population. The green areas of the map represent current conservation land such as national parks, state forests, wildlife management areas, local and private preserves. The blue areas of the map represent current water features such as lakes, streams, rivers, and coastlines. Complete maps available at http://elderaffairs.state.fl.us/does/eni_home.php

Source: Florida Department of Elder Affairs using U.S. Census Bureau, 2008-12 ACS data

2017 Profile of Older Floridians

PSA 7 Total



¹ Those who report speaking English "Not well" or "Not at all" are defined as having Limited English Proficiency (LEP) in this profile.

² Total Minorities = (60+ Population) - (White Non-Hispanic 60+)

³ A "dependency ratio" is commonly depicted as a ratio of workers to non-workers. Rather than using labor-force participation rates, which fluctuate, a stable dependency ratio can be estimated by using the number of individuals in the population who fall into age groups generally aligned with school-aged kids, working age adults, and retired seniors. For this graphic, working age adults (defined as 18-59) were compared to minors (age 0-17)(youth dependency ratio) and seniors (age 65+)(aged dependency ratio).

⁴ Medically Underserved Areas/Populations are areas or populations designated by Health Resources & Services Administration(HRSA) as having too few primary care providers, high infant mortality, high poverty or a high elderly population.

⁵ Households age 65 and older paying more than 30 percent of income for housing costs (including utilities) and have an income below 50 percent of the area median income.

⁶ Wider Opportunities for Women Elder Economic Security Standard™ Index (Elder Index) measures how much income retired older adults require to meet their basic needs without public or private assistance. The Elder Index measures basic expenses for elders age 65+ living in the community, not in institutions. Annual expenses include: housing, including utilities, taxes, insurance; food; transportation; health care, based on good health; and miscellaneous. Data found at <http://www.basiceconomicsecurity.org/EI/>

⁷ With One Type of Disability: 60+ people who have only one type of disability

⁸ Probable Alzheimer's Cases = (65-74 Population x 0.035430) + (75-84 Population x 0.168209) + (85+ Population x 0.422937) Alzheimer's by Age in 2017 Alzheimer's Disease Facts and Figures Report used to develop calculation can be found at: http://www.alz.org/documents_custom/facts_2017/statesheet_florida.pdf?type=interior_map&facts=undefined&facts=facts

⁹ OSS Beds: Optional State Supplementation Beds. Optional State Supplementation (OSS) is a cash assistance program. Its purpose is to supplement a person's income to help pay for costs in an assisted living facility, mental health residential treatment facility, and adult family care home. It is NOT a Medicaid program.

¹⁰ ECC License: Extended Congregate Care License. The ECC license is a specialty license that enables a facility to provide, directly or through contract, services beyond those permissible under the standard license, including acts performed by licensed nurses, and supportive services defined by rule to persons who otherwise would be disqualified from continued residence in a facility licensed under this part.

¹¹ LMH License: Limited Mental Health License. Any facility intending to admit three or more mental health residents must apply for and obtain a limited mental health license from AHCA's Assisted Living Unit before accepting the third mental health resident.

¹² LNS License: Limited Nursing Services License. The LNS license is a specialty license that enables a facility to provide a select number of nursing services.