

2017 Profile of Older Floridians

PSA 3 Total



Population by Age Category		
All Ages	1,726,917	100.0%
Under 18	309,966	17.9%
Under 60	1,147,452	66.4%
18-59	837,486	48.5%
60+	579,465	33.6%
65+	452,175	26.2%
70+	320,582	18.6%
75+	201,400	11.7%
80+	111,555	6.5%
85+	53,240	3.1%

Source: Office of Economic and Demographic Research, 2016

Population by Race and Ethnicity		
White	533,820	92.1%
Black	37,277	6.4%
Other Minorities	8,368	1.4%
Total Hispanic	25,605	4.4%
White	23,303	4.0%
Non-White	2,302	0.4%
Total Non-Hispanic	553,860	95.6%
Total Racial and Hispanic Minorities ²	68,948	11.9%

Source: EDR, 2016

Population by Gender		
Male	266,262	45.9%
Female	313,203	54.1%

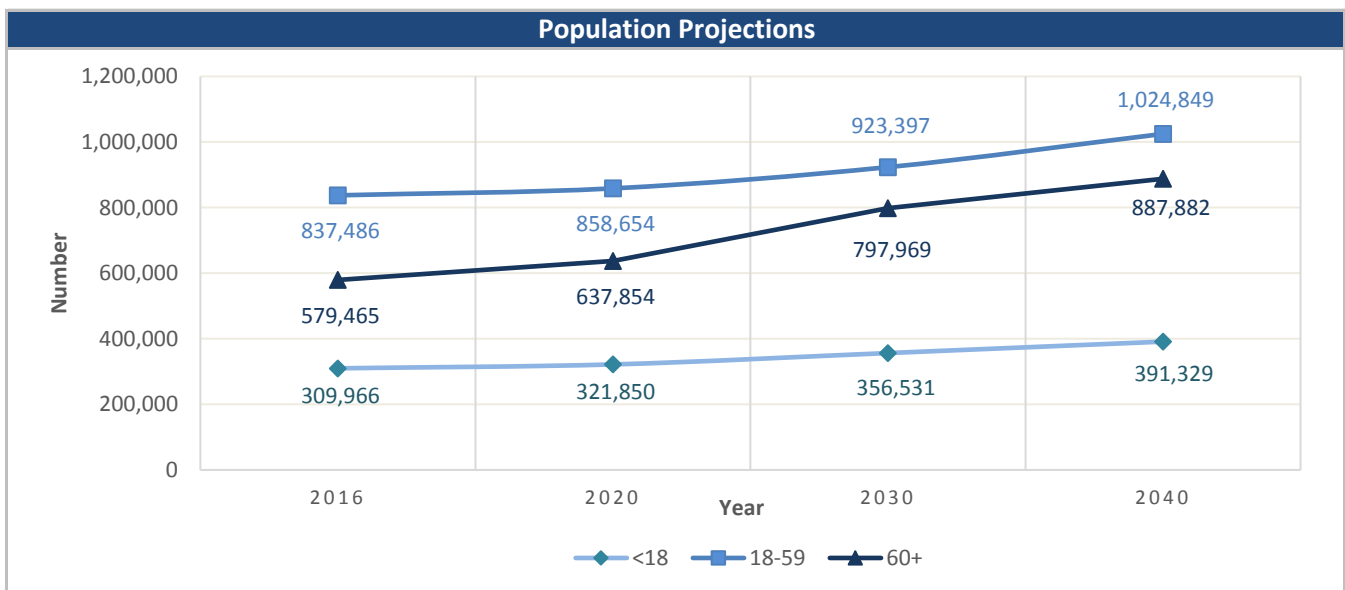
Source: EDR, 2016

English Proficiency	
With Limited English Proficiency ¹	7,371

Source: DOEA calculations based on EDR and 2010-14 ACS data

Financial Status		%
Below Poverty Guideline	52,571	9.1%
Below 125% of Poverty Guideline	80,764	13.9%
Minority Below Poverty Guideline	11,334	2.0%
Minority Below 125% of Poverty Guideline	16,493	2.8%

Source: DOEA calculations based on EDR and 2010-14 ACS data

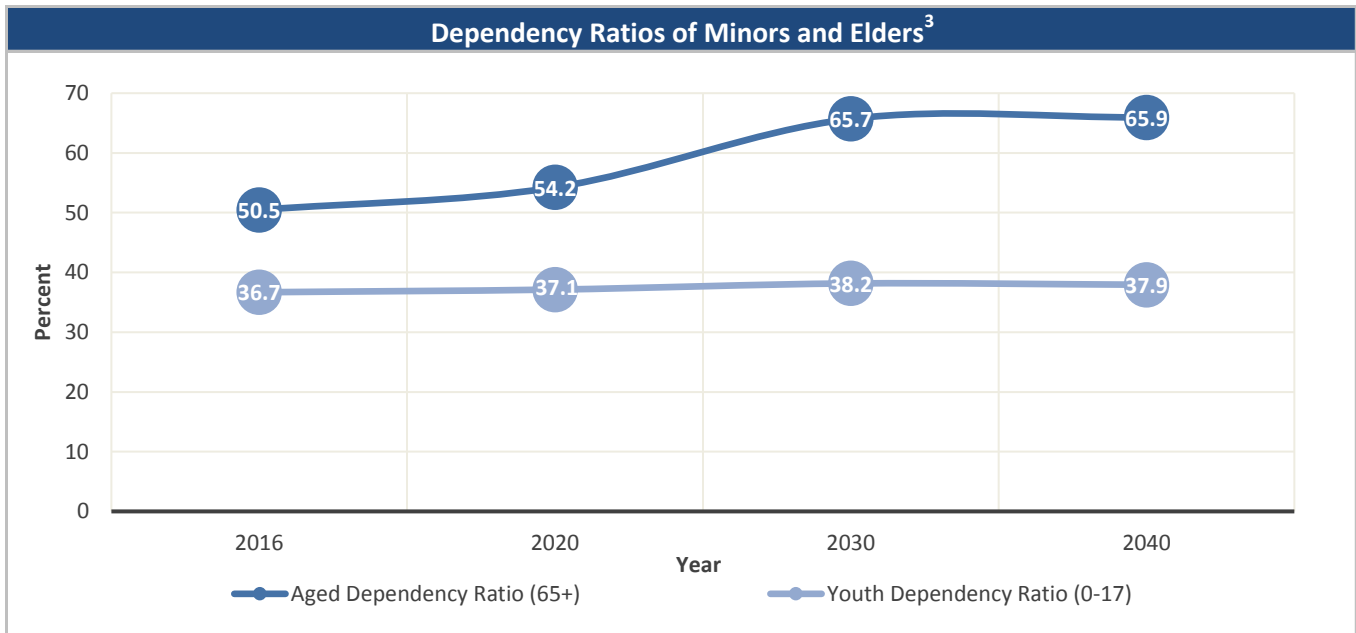


Source: Office of Economic and Demographic Research, 2016

Unless otherwise noted, the data presented in this *Profile* refers to elder populations in Florida age 60 and older.

2017 Profile of Older Floridians

PSA 3 Total



Source: Office of Economic and Demographic Research, 2016

Grandparents	
Living With Own Grandchildren*	20,002
Grandparent Responsible for Own Grandchildren*	7,510
Grandparent Not Responsible for Own Grandchildren*	12,486
Not Living With Own Grandchildren*	559,463

*Grandchildren Under Age 18

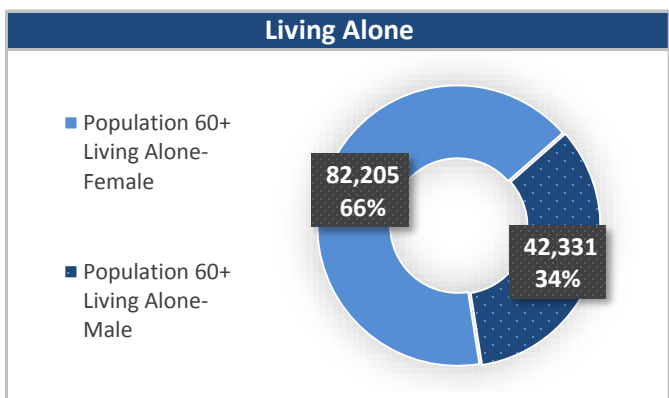
Source: DOEA calculations based on EDR and 2010-14 ACS data

SNAP or Food Stamps	
Participants	36,972
Potentially Eligible	80,764
Participation Rate	45.8%

Source: Florida Department of Children and Families, 2016

Medically Underserved (65+)	
Total Medically Underserved ⁴	154,025
Living in Areas Defined as Having Medically Underserved Populations	119,592
Living in Medically Underserved Areas	34,433

Source: DOH and U.S. HHS, Data as of 8/25/2017



Source: DOEA calculations based on EDR and 2010-14 ACS data

Unless otherwise noted, the data presented in this *Profile* refers to elder populations in Florida age 60 and older.

2017 Profile of Older Floridians

PSA 3 Total

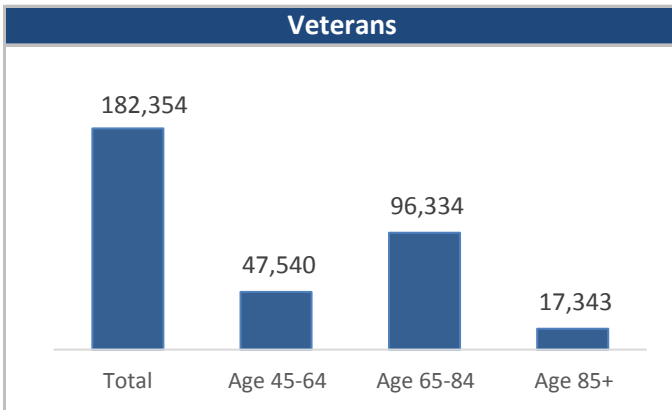


Florida Registered Voters	
Elder Voters	498,364
Percent of All Voters	43.0%

Source: FL Department of State, 2016

Florida Driver's License	
Elder Drivers	421,139
Percent of All Drivers	36.2%

Source: FL Department of Highway Safety & Motor Vehicles, 2016



Source: FL Department of Veterans' Affairs

Households With Cost Burden Above 30% and Income Below 50% Area Median Income (65+) ⁵	
Elder Households	266,307
Percent of All Households	13.3%

Source: The Shimberg Center for Housing Studies, 2016

Cost of Living, Annual Expenses(65+) ⁶	
Single Elders	
Owner without Mortgage	\$18,045
Renter, one bedroom	\$21,272
Owner with Mortgage	\$26,959
Elder Couple	
Owner without Mortgage	\$28,798
Renter, one bedroom	\$32,024
Owner with Mortgage	\$37,712

Source: Wider Opportunities for Women Elder Economic Security Standard™ Index (Elder Index), Data as of 8/16/2017

Retirement (65+)	
Disability Insurance (OASDI) Beneficiaries	346,702
Percent OASDI Beneficiaries	76.7%

Source: DOEA calculations based on EDR and the U.S. Social Security Administration data, 2016

Median Household Income for All Ages	
2011-2015	\$39,553

Source: U.S. Census Bureau, 2011-2015 American Community Survey 5-Year Estimates

Disability Status	
With One Type of Disability ⁷	91,151
With Two or More Disabilities	89,900
Total With Any Disability	
Hearing	79,139
Vision	31,849
Cognitive	44,963
Ambulatory	110,526
Self-Care	34,793
Independent Living	63,661
With No Disabilities	398,408
Probable Alzheimer's Cases (65+) ⁸	56,324

Source: DOEA calculations based on EDR, 2010-14 ACS data, and Alzheimer's Disease Facts and Figures Report, 2017

Medical Professionals	
Medical Doctors	
Licensed	3,882
Limited License	6
Critical Need Area License	75
Restricted	0
Medical Faculty Certification	11
Public Health Certificate	0
Specialties	
Licensed Podiatric Physicians	87
Licensed Osteopathic Physicians	346
Licensed Chiropractic Physicians	345
Licensed Registered Nurses	23,022

Source: Florida Department of Health, 2016

Unless otherwise noted, the data presented in this *Profile* refers to elder populations in Florida age 60 and older.

2017 Profile of Older Floridians

PSA 3 Total



Skilled Nursing Facility (SNF) Utilization	
SNF Beds	7,721
Community Beds	7,610
Sheltered Beds	111
Veterans' Affairs Administration Beds	-
Other Beds	-
SNFs With Beds	68
Community Beds	65
Sheltered Beds	3
Veterans' Affairs Administration Beds	-
Other Beds	-
SNFs With Community Beds	65
Community Bed Days	2,780,752
Community Patient Days	2,495,594
Medicaid Patient Days	1,560,134
Occupancy Rate	89.7%
Percent Medicaid	62.5%

Assisted Living Facility	
Total Beds	8,419
OSS Beds ⁹	800
Non-OSS Beds	7,619
Total Facilities	163
Facilities with ECC License ¹⁰	30
Facilities with LMH License ¹¹	23
Facilities with LNS License ¹²	45

Adult Family Care Homes	
Homes	30
Beds	133

Ambulatory Surgical Centers	
Facilities	40
Operating Rooms	90
Recovery Beds	296

Home Health Agencies	
Agencies	150
Medicaid Certified Agencies	32
Medicare Certified Agencies	104

Hospitals	
Hospitals	34
Hospitals with Skilled Nursing Units	1
Hospital Beds	5,033
Skilled Nursing Unit Beds	170

Homemaker & Companion Service Companies	
Companies	163

Medicaid & Medicare Eligibility	
Medicaid Eligible - All Ages	347,692
60+ Medicaid Eligible	48,459
Dual Eligible - All Ages	67,636
60+ Dual Eligible	43,449

Adult Day Care	
Facilities	12
Capacity	465

Source for Page: AHCA, 2016

2017 Profile of Older Floridians

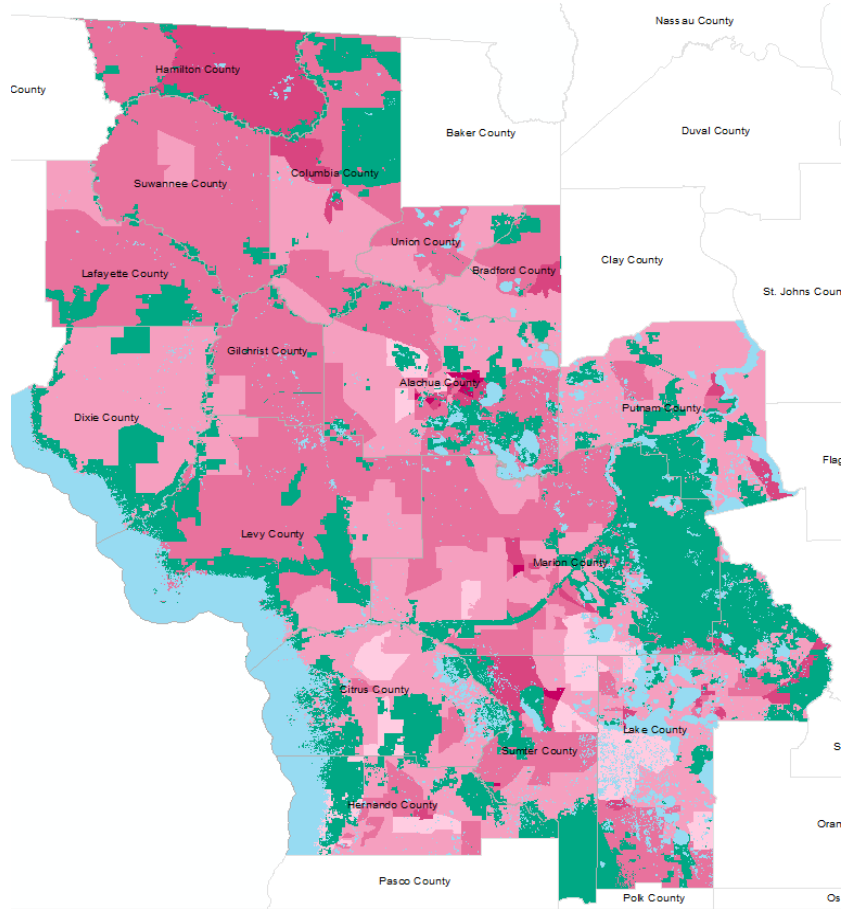
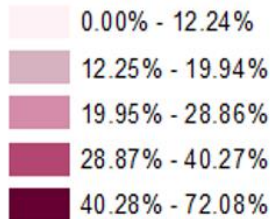
PSA 3 Total



Elder Needs Index

Elder Needs Index (all factors)

ENI



The Elder Needs Index (ENI) is a composite measure that includes: (1) the percentage of the 60 and older population that is age 85 and older; (2) the percentage of the 55 and older population who are members of racial or ethnic minority groups; (3) the percentage of the 65 and older population with one or more disability; and (4) the percentage of the 55 and older population living below 125% of the Federal Poverty Level. The Index is an averaged score that indicates senior citizens' overall level of risk for a probable need of social services within a geographic area. It is not a percentage of the area's population. The green areas of the map represent current conservation land such as national parks, state forests, wildlife management areas, local and private preserves. The blue areas of the map represent current water features such as lakes, streams, rivers, and coastlines. Complete maps available at http://elderaffairs.state.fl.us/doa/eni_home.php

Source: Florida Department of Elder Affairs using U.S. Census Bureau, 2008-12 ACS data

2017 Profile of Older Floridians

PSA 3 Total



¹ Those who report speaking English "Not well" or "Not at all" are defined as having Limited English Proficiency (LEP) in this profile.

² Total Minorities = (60+ Population) - (White Non-Hispanic 60+)

³ A "dependency ratio" is commonly depicted as a ratio of workers to non-workers. Rather than using labor-force participation rates, which fluctuate, a stable dependency ratio can be estimated by using the number of individuals in the population who fall into age groups generally aligned with school-aged kids, working age adults, and retired seniors. For this graphic, working age adults (defined as 18-59) were compared to minors (age 0-17)(youth dependency ratio) and seniors (age 65+)(aged dependency ratio).

⁴ Medically Underserved Areas/Populations are areas or populations designated by Health Resources & Services Administration(HRSA) as having too few primary care providers, high infant mortality, high poverty or a high elderly population.

⁵ Households age 65 and older paying more than 30 percent of income for housing costs (including utilities) and have an income below 50 percent of the area median income.

⁶ Wider Opportunities for Women Elder Economic Security Standard™ Index (Elder Index) measures how much income retired older adults require to meet their basic needs without public or private assistance. The Elder Index measures basic expenses for elders age 65+ living in the community, not in institutions. Annual expenses include: housing, including utilities, taxes, insurance; food; transportation; health care, based on good health; and miscellaneous. Data found at <http://www.basiceconomicsecurity.org/EI/>

⁷ With One Type of Disability: 60+ people who have only one type of disability

⁸ Probable Alzheimer's Cases = (65-74 Population x 0.035430) + (75-84 Population x 0.168209) + (85+ Population x 0.422937) Alzheimer's by Age in 2017 Alzheimer's Disease Facts and Figures Report used to develop calculation can be found at: http://www.alz.org/documents_custom/facts_2017/statesheet_florida.pdf?type=interior_map&facts=undefined&facts=facts

⁹ OSS Beds: Optional State Supplementation Beds. Optional State Supplementation (OSS) is a cash assistance program. Its purpose is to supplement a person's income to help pay for costs in an assisted living facility, mental health residential treatment facility, and adult family care home. It is NOT a Medicaid program.

¹⁰ ECC License: Extended Congregate Care License. The ECC license is a specialty license that enables a facility to provide, directly or through contract, services beyond those permissible under the standard license, including acts performed by licensed nurses, and supportive services defined by rule to persons who otherwise would be disqualified from continued residence in a facility licensed under this part.

¹¹ LMH License: Limited Mental Health License. Any facility intending to admit three or more mental health residents must apply for and obtain a limited mental health license from AHCA's Assisted Living Unit before accepting the third mental health resident.

¹² LNS License: Limited Nursing Services License. The LNS license is a specialty license that enables a facility to provide a select number of nursing services.