

2017 Profile of Older Floridians

Lake



Population by Age Category		
All Ages	331,657	100.0%
Under 18	65,257	19.7%
Under 60	222,294	67.0%
18-59	157,037	47.3%
60+	109,363	33.0%
65+	85,075	25.7%
70+	60,893	18.4%
75+	38,768	11.7%
80+	21,754	6.6%
85+	10,553	3.2%

Source: Office of Economic and Demographic Research, 2016

Population by Race and Ethnicity		
White	100,801	92.2%
Black	6,636	6.1%
Other Minorities	1,926	1.8%
Total Hispanic	6,300	5.8%
White	5,668	5.2%
Non-White	632	0.6%
Total Non-Hispanic	103,063	94.2%
Total Racial and Hispanic Minorities ²	14,230	13.0%

Source: EDR, 2016

Population by Gender		
Male	50,107	45.8%
Female	59,256	54.2%

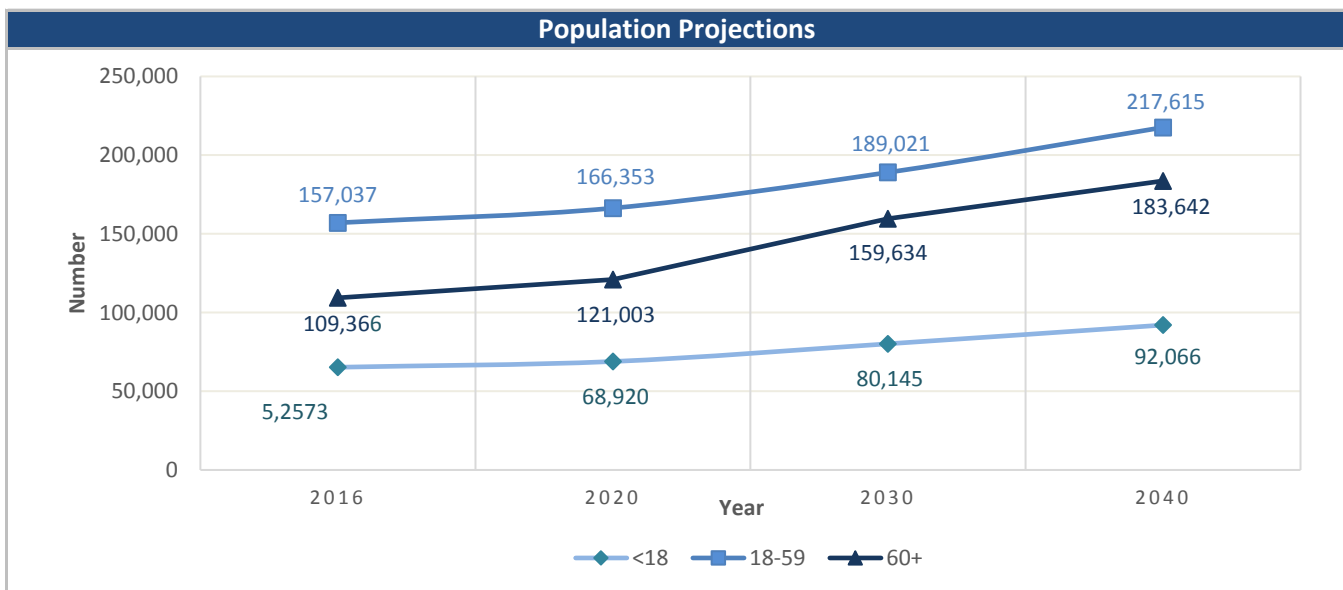
Source: EDR, 2016

English Proficiency	
With Limited English Proficiency ¹	2,022

Source: DOEA calculations based on EDR and 2010-14 ACS data

Financial Status		%
Below Poverty Guideline	8,547	7.8%
Below 125% of Poverty Guideline	14,155	12.9%
Minority Below Poverty Guideline	2,107	1.9%
Minority Below 125% of Poverty Guideline	3,131	2.9%

Source: DOEA calculations based on EDR and 2010-14 ACS data

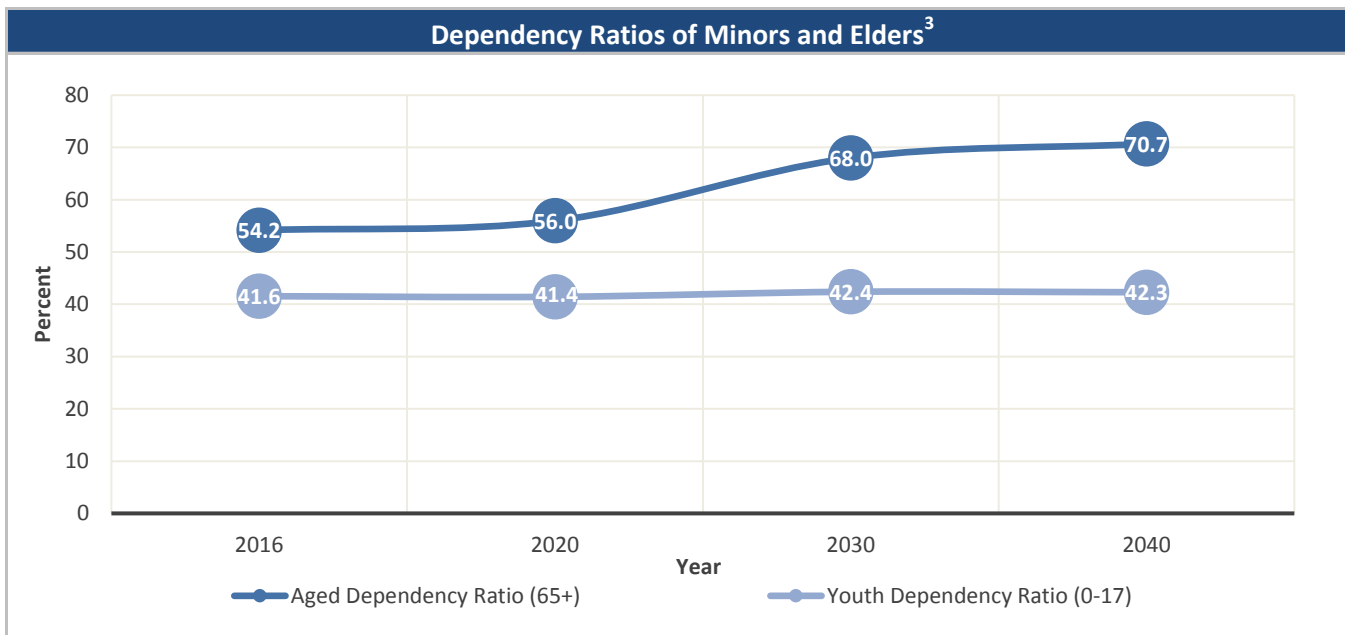


Source: Office of Economic and Demographic Research, 2016

Unless otherwise noted, the data presented in this *Profile* refers to elder populations in Florida age 60 and older.

2017 Profile of Older Floridians

Lake



Source: Office of Economic and Demographic Research, 2016

Grandparents	
Living With Own Grandchildren*	4,044
Grandparent Responsible for Own Grandchildren*	1,312
Grandparent Not Responsible for Own Grandchildren*	2,732
Not Living With Own Grandchildren*	105,319

*Grandchildren Under Age 18

Source: DOEA calculations based on EDR and 2010-14 ACS data

SNAP or Food Stamps	
Participants	6,579
Potentially Eligible	14,155
Participation Rate	46.5%

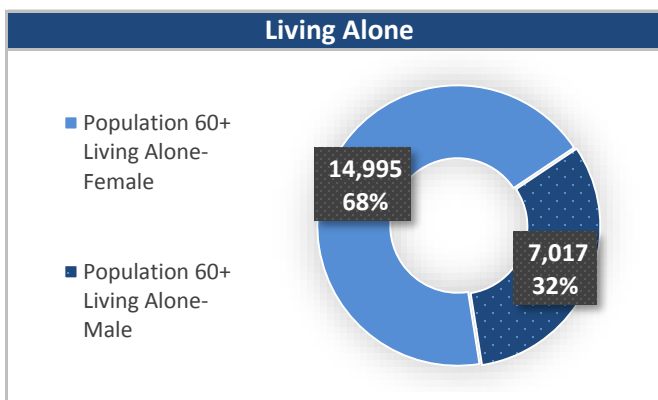
Source: Florida Department of Children and Families, 2016

Rural Designation	
Rural (Yes/No)	NO

Source: Rural Economic Development Initiative

Medically Underserved (65+)	
Total Medically Underserved ⁴	27,904
Living in Areas Defined as Having Medically Underserved Populations	27,904
Living in Medically Underserved Areas	0

Source: DOH and U.S. HHS, Data as of 8/25/2017



Source: DOEA calculations based on EDR and 2010-14 ACS data

Unless otherwise noted, the data presented in this *Profile* refers to elder populations in Florida age 60 and older.

2017 Profile of Older Floridians

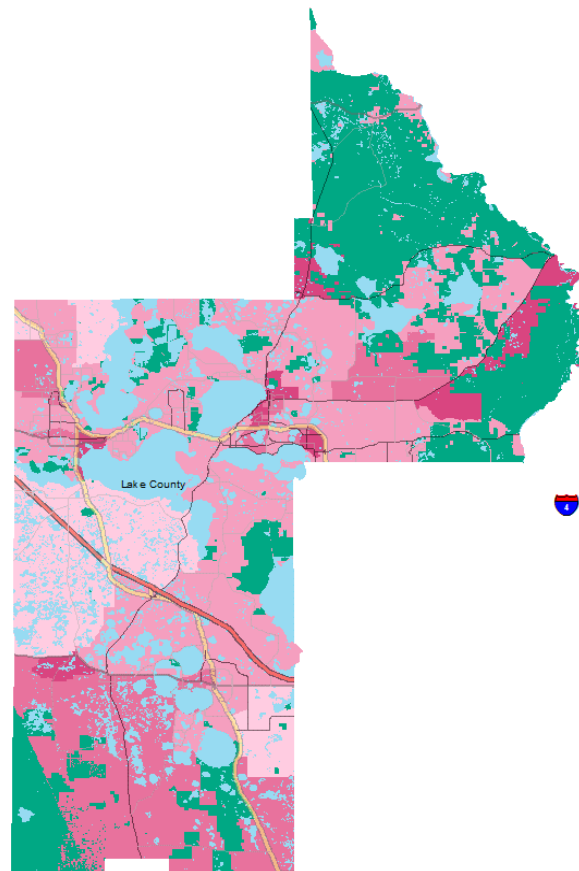
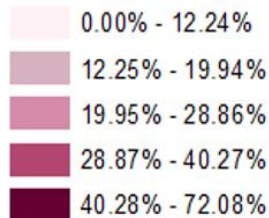
Lake



Elder Needs Index

Elder Needs Index (all factors)

ENI



The Elder Needs Index (ENI) is a composite measure that includes: (1) the percentage of the 60 and older population that is age 85 and older; (2) the percentage of the 55 and older population who are members of racial or ethnic minority groups; (3) the percentage of the 65 and older population with one or more disability; and (4) the percentage of the 55 and older population living below 125% of the Federal Poverty Level. The Index is an averaged score that indicates senior citizens' overall level of risk for a probable need of social services within a geographic area. It is not a percentage of the area's population. The green areas of the map represent current conservation land such as national parks, state forests, wildlife management areas, local and private preserves. The blue areas of the map represent current water features such as lakes, streams, rivers, and coastlines. Complete maps available at http://elderaffairs.state.fl.us/does/eni_home.php

Source: Florida Department of Elder Affairs using U.S. Census Bureau, 2008-12 ACS data

Useful Websites

- [Office of Economic & Demographic Research \(EDR\)](#)
- [U.S. Census Bureau, American Community Survey](#)
- [U.S. Census Bureau, Quick Facts](#)
- [Agency for Health Care Administration \(AHCA\)](#)

- [FL Division of Emergency Management \(Shelters\)](#)
- [Florida Housing Data Clearinghouse](#)
- [County Chronic Disease Profile](#)

Unless otherwise noted, the data presented in this *Profile* refers to elder populations in Florida age 60 and older.

