

2017 Profile of Older Floridians

Holmes

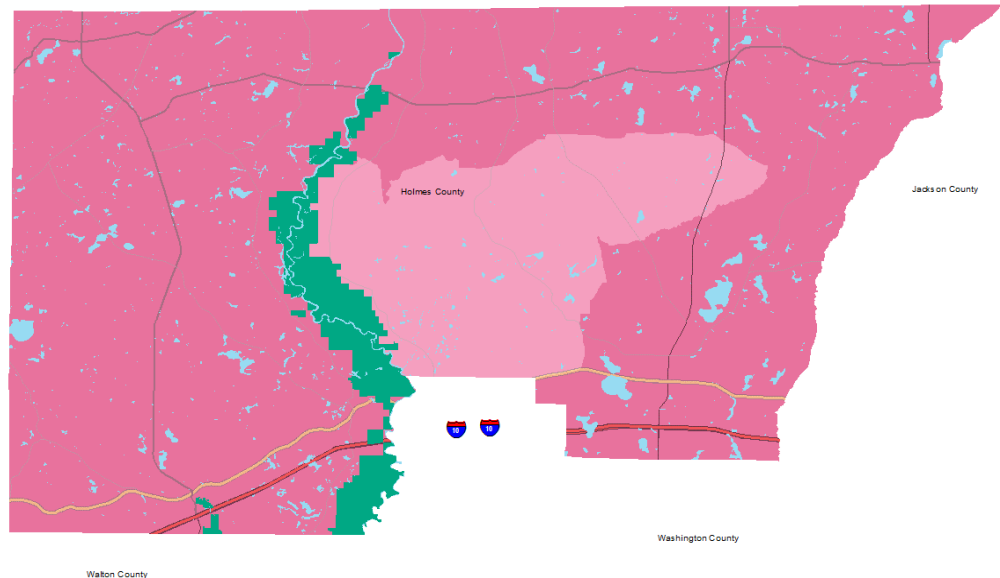


Elder Needs Index

Elder Needs Index (all factors)

ENI

- 0.00% - 12.24%
- 12.25% - 19.94%
- 19.95% - 28.86%
- 28.87% - 40.27%
- 40.28% - 72.08%



The Elder Needs Index (ENI) is a composite measure that includes: (1) the percentage of the 60 and older population that is age 85 and older; (2) the percentage of the 55 and older population who are members of racial or ethnic minority groups; (3) the percentage of the 65 and older population with one or more disability; and (4) the percentage of the 55 and older population living below 125% of the Federal Poverty Level. The Index is an averaged score that indicates senior citizens' overall level of risk for a probable need of social services within a geographic area. It is not a percentage of the area's population. The green areas of the map represent current conservation land such as national parks, state forests, wildlife management areas, local and private preserves. The blue areas of the map represent current water features such as lakes, streams, rivers, and coastlines. Complete maps available at http://elderaffairs.state.fl.us/does/eni_home.php

Source: Florida Department of Elder Affairs using U.S. Census Bureau, 2008-12 ACS data

Useful Websites

- [Office of Economic & Demographic Research \(EDR\)](#)
- [U.S. Census Bureau, American Community Survey](#)
- [U.S. Census Bureau, Quick Facts](#)
- [Agency for Health Care Administration \(AHCA\)](#)

- [FL Division of Emergency Management \(Shelters\)](#)
- [Florida Housing Data Clearinghouse](#)
- [County Chronic Disease Profile](#)

Unless otherwise noted, the data presented in this *Profile* refers to elder populations in Florida age 60 and older.

