

# 2017 Profile of Older Floridians

Clay



Population by Age Category		
All Ages	209,808	100.0%
Under 18	51,720	24.7%
Under 60	166,594	79.4%
18-59	114,874	54.8%
60+	43,214	20.6%
65+	30,729	14.6%
70+	20,055	9.6%
75+	12,042	5.7%
80+	6,571	3.1%
85+	3,085	1.5%

Source: Office of Economic and Demographic Research, 2016

Population by Race and Ethnicity		
White	38,654	89.4%
Black	2,943	6.8%
Other Minorities	1,617	3.7%
Total Hispanic	2,152	5.0%
White	1,847	4.3%
Non-White	305	0.7%
Total Non-Hispanic	41,062	95.0%
Total Racial and Hispanic Minorities <sup>2</sup>	6,407	14.8%

Source: EDR, 2016

Population by Gender		
Male	19,711	45.6%
Female	23,503	54.4%

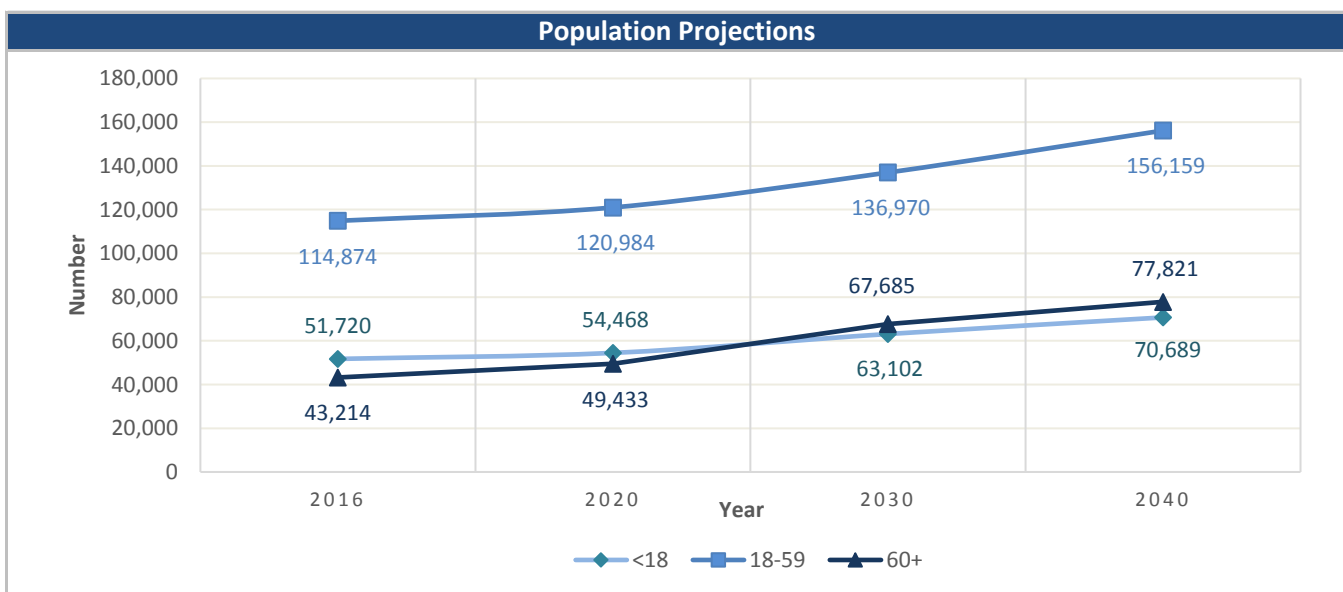
Source: EDR, 2016

English Proficiency	
With Limited English Proficiency <sup>1</sup>	666

Source: DOEA calculations based on EDR and 2010-14 ACS data

Financial Status		%
Below Poverty Guideline	2,938	6.8%
Below 125% of Poverty Guideline	4,034	9.3%
Minority Below Poverty Guideline	650	1.5%
Minority Below 125% of Poverty Guideline	773	1.8%

Source: DOEA calculations based on EDR and 2010-14 ACS data

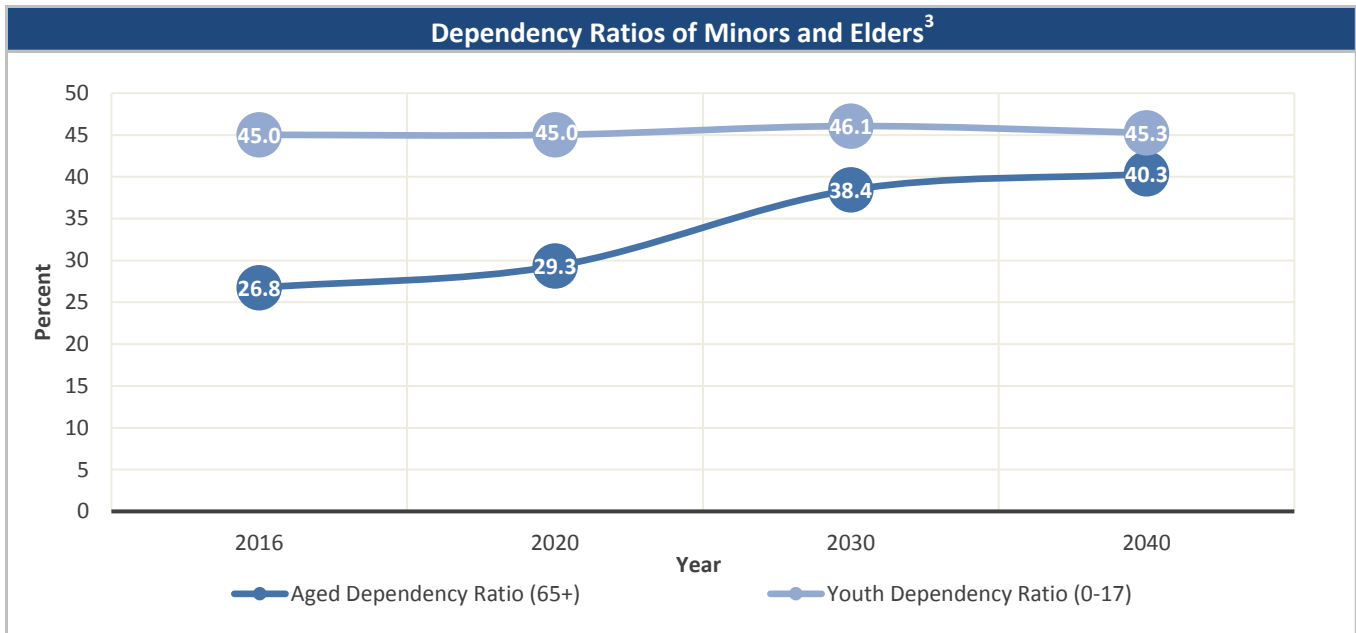


Source: Office of Economic and Demographic Research, 2016

Unless otherwise noted, the data presented in this *Profile* refers to elder populations in Florida age 60 and older.

# 2017 Profile of Older Floridians

Clay



Source: Office of Economic and Demographic Research, 2016

Grandparents	
Living With Own Grandchildren*	3,337
Grandparent Responsible for Own Grandchildren*	1,402
Grandparent Not Responsible for Own Grandchildren*	1,935
Not Living With Own Grandchildren*	39,877

\*Grandchildren Under Age 18

Source: DOEA calculations based on EDR and 2010-14 ACS data

SNAP or Food Stamps	
Participants	2,177
Potentially Eligible	4,034
Participation Rate	54.0%

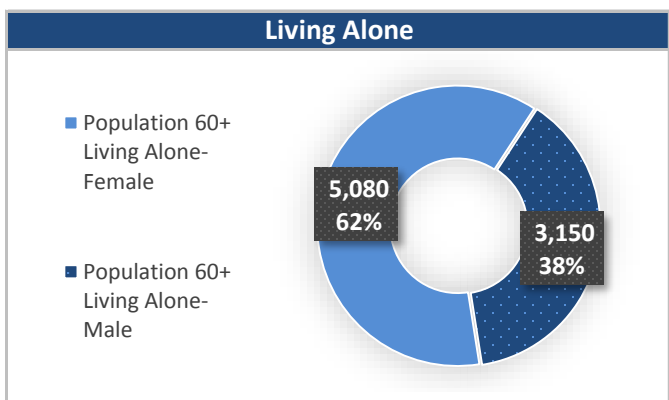
Source: Florida Department of Children and Families, 2016

Rural Designation	
Rural (Yes/No)	NO

Source: Rural Economic Development Initiative

Medically Underserved (65+)	
Total Medically Underserved <sup>4</sup>	1,659
Living in Areas Defined as Having Medically Underserved Populations	-
Living in Medically Underserved Areas	1,659

Source: DOH and U.S. HHS, Data as of 8/25/2017



Source: DOEA calculations based on EDR and 2010-14 ACS data

Unless otherwise noted, the data presented in this *Profile* refers to elder populations in Florida age 60 and older.

# 2017 Profile of Older Floridians

Clay

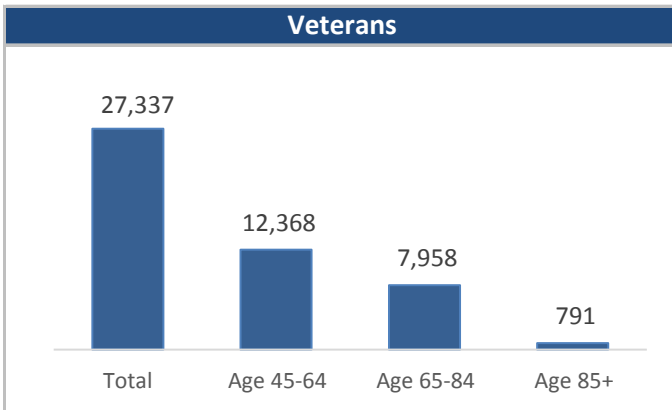


Florida Registered Voters	
Elder Voters	40,430
Percent of All Voters	27.4%

Source: FL Department of State, 2016

Florida Driver's License	
Elder Drivers	43,376
Percent of All Drivers	25.3%

Source: FL Department of Highway Safety & Motor Vehicles, 2016



Source: FL Department of Veterans' Affairs

Households With Cost Burden Above 30% and Income Below 50% Area Median Income (65+) <sup>5</sup>	
Elder Households	17,277
Percent of All Households	11.8%

Source: The Shimberg Center for Housing Studies, 2016

Cost of Living, Annual Expenses(65+) <sup>6</sup>	
<b>Single Elders</b>	
Owner without Mortgage	\$17,016
Renter, one bedroom	\$22,332
Owner with Mortgage	\$28,836
<b>Elder Couple</b>	
Owner without Mortgage	\$26,784
Renter, one bedroom	\$32,100
Owner with Mortgage	\$38,604

Source: Wider Opportunities for Women Elder Economic Security Standard™ Index (Elder Index), Data as of 8/16/2017

Retirement (65+)	
Disability Insurance (OASDI) Beneficiaries	22,059
Percent OASDI Beneficiaries	71.8%

Source: DOEA calculations based on EDR and the U.S. Social Security Administration data, 2016

Median Household Income for All Ages	
2011-2015	\$58,290

Source: U.S. Census Bureau, 2011-2015 American Community Survey 5-Year Estimates

Disability Status	
With One Type of Disability <sup>7</sup>	6,526
With Two or More Disabilities	7,682
<b>Total With Any Disability</b>	
Hearing	4,840
Vision	1,857
Cognitive	4,133
Ambulatory	9,616
Self-Care	2,635
Independent Living	6,226
With No Disabilities	29,006
Probable Alzheimer's Cases (65+) <sup>8</sup>	3,473

Source: DOEA calculations based on EDR, 2010-14 ACS data, and Alzheimer's Disease Facts and Figures Report, 2017

Medical Professionals	
<b>Medical Doctors</b>	
Licensed	327
Limited License	2
Critical Need Area License	5
Restricted	0
Medical Faculty Certification	1
Public Health Certificate	0
<b>Specialties</b>	
Licensed Podiatric Physicians	12
Licensed Osteopathic Physicians	58
Licensed Chiropractic Physicians	38
<b>Licensed Registered Nurses</b>	3,425

Source: Florida Department of Health, 2016

Unless otherwise noted, the data presented in this *Profile* refers to elder populations in Florida age 60 and older.

# 2017 Profile of Older Floridians

Clay



Skilled Nursing Facility (SNF) Utilization	
<b>SNF Beds</b>	1,033
Community Beds	1,033
Sheltered Beds	-
Veterans' Affairs Administration Beds	-
Other Beds	-
<b>SNFs With Beds</b>	9
Community Beds	9
Sheltered Beds	-
Veterans' Affairs Administration Beds	-
Other Beds	-
<b>SNFs With Community Beds</b>	9
Community Bed Days	378,078
Community Patient Days	341,259
Medicaid Patient Days	190,857
Occupancy Rate	90.3%
Percent Medicaid	55.9%

Assisted Living Facility	
<b>Total Beds</b>	608
OSS Beds <sup>9</sup>	31
Non-OSS Beds	577
<b>Total Facilities</b>	13
Facilities with ECC License <sup>10</sup>	3
Facilities with LMH License <sup>11</sup>	1
Facilities with LNS License <sup>12</sup>	5

Adult Family Care Homes	
Homes	3
Beds	13

Ambulatory Surgical Centers	
Facilities	4
Operating Rooms	12
Recovery Beds	31

Home Health Agencies	
<b>Agencies</b>	17
Medicaid Certified Agencies	2
Medicare Certified Agencies	10

Hospitals	
<b>Hospitals</b>	3
Hospitals with Skilled Nursing Units	0
<b>Hospital Beds</b>	441
Skilled Nursing Unit Beds	0

Homemaker & Companion Service Companies	
Companies	12

Medicaid & Medicare Eligibility	
Medicaid Eligible - All Ages	32,724
60+ Medicaid Eligible	3,207
Dual Eligible - All Ages	4,453
60+ Dual Eligible	2,856

Adult Day Care	
Facilities	2
Capacity	83

Source for Page: AHCA, 2016

# 2017 Profile of Older Floridians

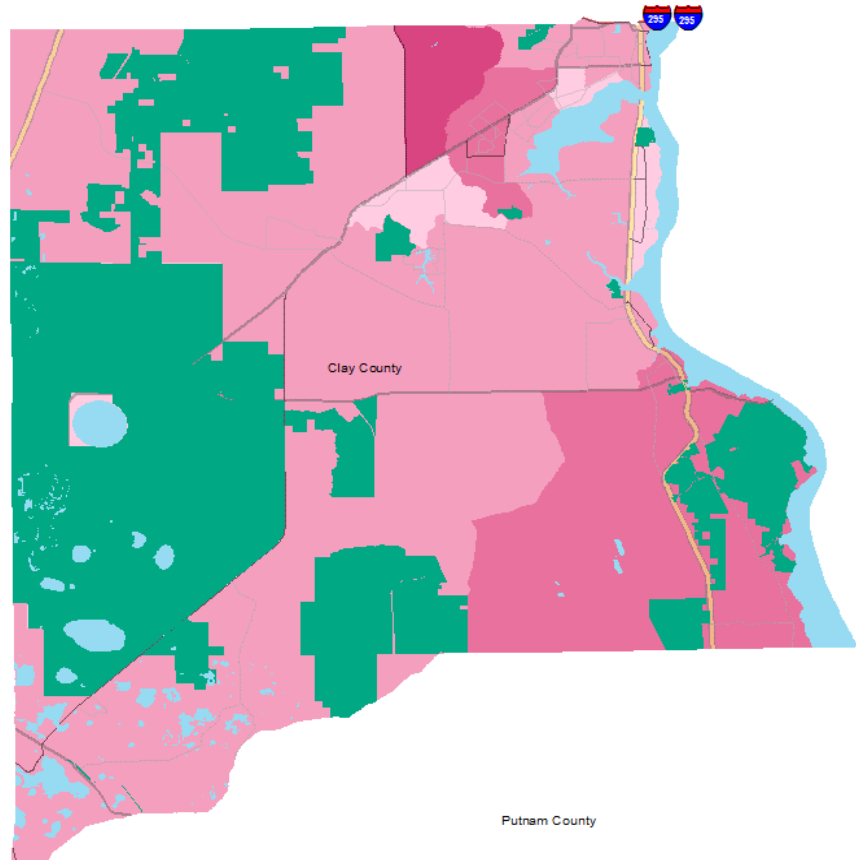
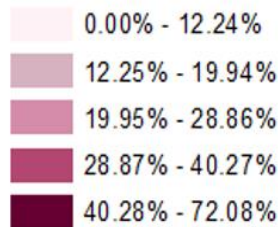
Clay



## Elder Needs Index

### Elder Needs Index (all factors)

#### ENI



The Elder Needs Index (ENI) is a composite measure that includes: (1) the percentage of the 60 and older population that is age 85 and older; (2) the percentage of the 55 and older population who are members of racial or ethnic minority groups; (3) the percentage of the 65 and older population with one or more disability; and (4) the percentage of the 55 and older population living below 125% of the Federal Poverty Level. The Index is an averaged score that indicates senior citizens' overall level of risk for a probable need of social services within a geographic area. It is not a percentage of the area's population. The green areas of the map represent current conservation land such as national parks, state forests, wildlife management areas, local and private preserves. The blue areas of the map represent current water features such as lakes, streams, rivers, and coastlines. Complete maps available at [http://elderaffairs.state.fl.us/does/eni\\_home.php](http://elderaffairs.state.fl.us/does/eni_home.php)

Source: Florida Department of Elder Affairs using U.S. Census Bureau, 2008-12 ACS data

### Useful Websites

[Office of Economic & Demographic Research \(EDR\)](#)  
[U.S. Census Bureau, American Community Survey](#)  
[U.S. Census Bureau, Quick Facts](#)  
[Agency for Health Care Administration \(AHCA\)](#)

[FL Division of Emergency Management \(Shelters\)](#)  
[Florida Housing Data Clearinghouse](#)  
[County Chronic Disease Profile](#)

# 2017 Profile of Older Floridians

Clay



<sup>1</sup> Those who report speaking English "Not well" or "Not at all" are defined as having Limited English Proficiency (LEP) in this profile.

<sup>2</sup> Total Minorities = (60+ Population) - (White Non-Hispanic 60+)

<sup>3</sup> A "dependency ratio" is commonly depicted as a ratio of workers to non-workers. Rather than using labor-force participation rates, which fluctuate, a stable dependency ratio can be estimated by using the number of individuals in the population who fall into age groups generally aligned with school-aged kids, working age adults, and retired seniors. For this graphic, working age adults (defined as 18-59) were compared to minors (age 0-17)(youth dependency ratio) and seniors (age 65+)(aged dependency ratio).

<sup>4</sup> Medically Underserved Areas/Populations are areas or populations designated by Health Resources & Services Administration(HRSA) as having too few primary care providers, high infant mortality, high poverty or a high elderly population.

<sup>5</sup> Households age 65 and older paying more than 30 percent of income for housing costs (including utilities) and have an income below 50 percent of the area median income.

<sup>6</sup> Wider Opportunities for Women Elder Economic Security Standard™ Index (Elder Index) measures how much income retired older adults require to meet their basic needs without public or private assistance. The Elder Index measures basic expenses for elders age 65+ living in the community, not in institutions. Annual expenses include: housing, including utilities, taxes, insurance; food; transportation; health care, based on good health; and miscellaneous. Data found at <http://www.basiceconomicsecurity.org/EI/>

<sup>7</sup> With One Type of Disability: 60+ people who have only one type of disability

<sup>8</sup> Probable Alzheimer's Cases = (65-74 Population x 0.035430) + (75-84 Population x 0.168209) + (85+ Population x 0.422937) Alzheimer's by Age in 2017 Alzheimer's Disease Facts and Figures Report used to develop calculation can be found at: [http://www.alz.org/documents\\_custom/facts\\_2017/statesheet\\_florida.pdf?type=interior\\_map&facts=undefined&facts=facts](http://www.alz.org/documents_custom/facts_2017/statesheet_florida.pdf?type=interior_map&facts=undefined&facts=facts)

<sup>9</sup> OSS Beds: Optional State Supplementation Beds. Optional State Supplementation (OSS) is a cash assistance program. Its purpose is to supplement a person's income to help pay for costs in an assisted living facility, mental health residential treatment facility, and adult family care home. It is NOT a Medicaid program.

<sup>10</sup> ECC License: Extended Congregate Care License. The ECC license is a specialty license that enables a facility to provide, directly or through contract, services beyond those permissible under the standard license, including acts performed by licensed nurses, and supportive services defined by rule to persons who otherwise would be disqualified from continued residence in a facility licensed under this part.

<sup>11</sup> LMH License: Limited Mental Health License. Any facility intending to admit three or more mental health residents must apply for and obtain a limited mental health license from AHCA's Assisted Living Unit before accepting the third mental health resident.

<sup>12</sup> LNS License: Limited Nursing Services License. The LNS license is a specialty license that enables a facility to provide a select number of nursing services.