

2017 Profile of Older Floridians

Broward



Population by Age Category		
All Ages	1,867,095	100.0%
Under 18	396,428	21.2%
Under 60	1,446,089	77.5%
18-59	1,049,661	56.2%
60+	421,006	22.5%
65+	303,010	16.2%
70+	206,264	11.0%
75+	133,587	7.2%
80+	82,942	4.4%
85+	46,076	2.5%

Source: Office of Economic and Demographic Research, 2016

Population by Race and Ethnicity		
White	323,517	76.8%
Black	83,879	19.9%
Other Minorities	13,610	3.2%
Total Hispanic	86,665	20.6%
White	80,284	19.1%
Non-White	6,381	1.5%
Total Non-Hispanic	334,341	79.4%
Total Racial and Hispanic Minorities ²	177,773	42.2%

Source: EDR, 2016

Population by Gender		
Male	190,415	45.2%
Female	230,591	54.8%

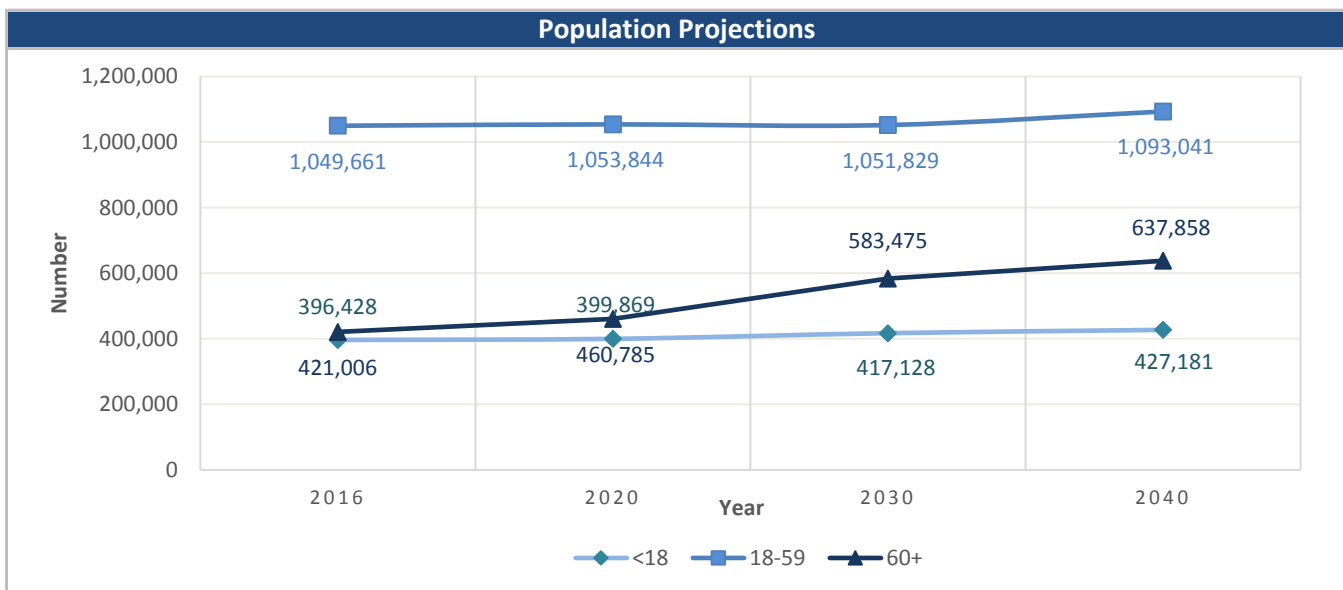
Source: EDR, 2016

English Proficiency	
With Limited English Proficiency ¹	47,678

Source: DOEA calculations based on EDR and 2010-14 ACS data

Financial Status		%
Below Poverty Guideline	54,453	12.9%
Below 125% of Poverty Guideline	79,084	18.8%
Minority Below Poverty Guideline	31,923	7.6%
Minority Below 125% of Poverty Guideline	44,531	10.6%

Source: DOEA calculations based on EDR and 2010-14 ACS data

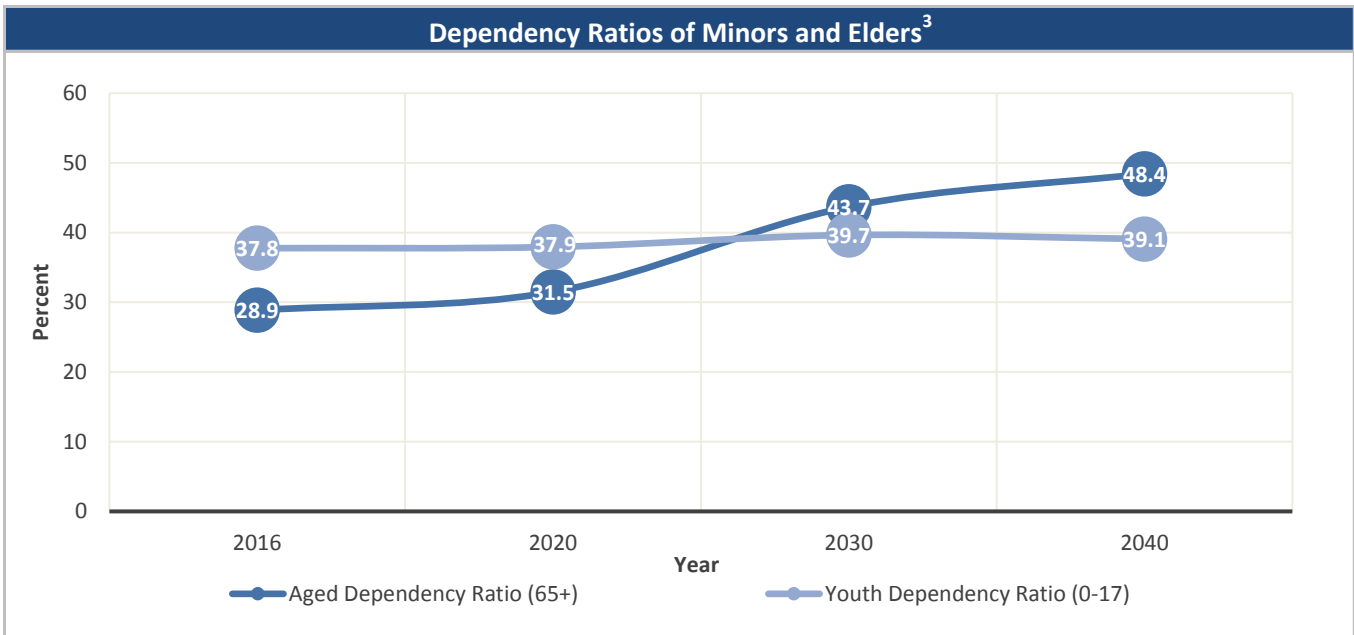


Source: Office of Economic and Demographic Research, 2016

Unless otherwise noted, the data presented in this *Profile* refers to elder populations in Florida age 60 and older.

2017 Profile of Older Floridians

Broward



Source: Office of Economic and Demographic Research, 2016

Grandparents	
Living With Own Grandchildren*	31,235
Grandparent Responsible for Own Grandchildren*	6,652
Grandparent Not Responsible for Own Grandchildren*	24,582
Not Living With Own Grandchildren*	389,771

*Grandchildren Under Age 18

Source: DOEA calculations based on EDR and 2010-14 ACS data

SNAP or Food Stamps	
Participants	53,097
Potentially Eligible	79,084
Participation Rate	67.1%

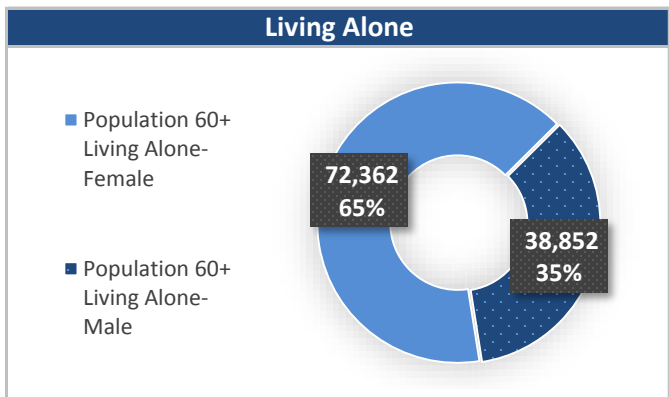
Source: Florida Department of Children and Families, 2016

Rural Designation	
Rural (Yes/No)	NO

Source: Rural Economic Development Initiative

Medically Underserved (65+)	
Total Medically Underserved ⁴	40,637
Living in Areas Defined as Having Medically Underserved Populations	40,637
Living in Medically Underserved Areas	0

Source: DOH and U.S. HHS, Data as of 8/25/2017



Source: DOEA calculations based on EDR and 2010-14 ACS data

Unless otherwise noted, the data presented in this *Profile* refers to elder populations in Florida age 60 and older.

2017 Profile of Older Floridians

Broward

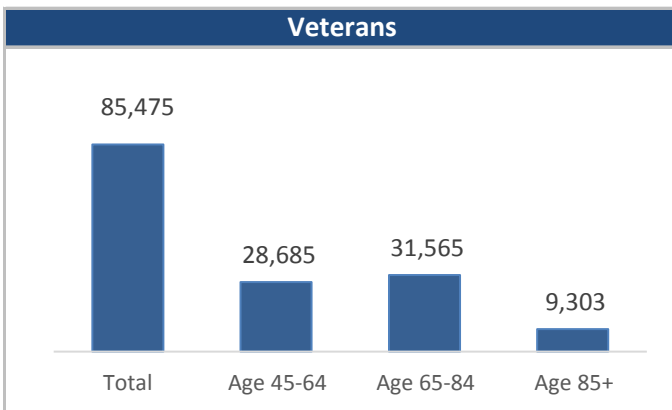


Florida Registered Voters	
Elder Voters	343,892
Percent of All Voters	29.0%

Source: FL Department of State, 2016

Florida Driver's License	
Elder Drivers	360,318
Percent of All Drivers	23.9%

Source: FL Department of Highway Safety & Motor Vehicles, 2016



Source: FL Department of Veterans' Affairs

Households With Cost Burden Above 30% and Income Below 50% Area Median Income (65+) ⁵	
Elder Households	186,826
Percent of All Households	32.5%

Source: The Shimberg Center for Housing Studies, 2016

Cost of Living, Annual Expenses(65+) ⁶	
Single Elders	
Owner without Mortgage	\$17,628
Renter, one bedroom	\$23,304
Owner with Mortgage	\$28,044
Elder Couple	
Owner without Mortgage	\$25,284
Renter, one bedroom	\$30,960
Owner with Mortgage	\$35,700

Source: Wider Opportunities for Women Elder Economic Security Standard™ Index (Elder Index), Data as of 8/16/2017

Retirement (65+)	
Disability Insurance (OASDI) Beneficiaries	232,729
Percent OASDI Beneficiaries	76.8%

Source: DOEA calculations based on EDR and the U.S. Social Security Administration data, 2016

Median Household Income for All Ages	
2011-2015	\$51,968

Source: U.S. Census Bureau, 2011-2015 American Community Survey 5-Year Estimates

Disability Status	
With One Type of Disability ⁷	59,672
With Two or More Disabilities	72,564
Total With Any Disability	
Hearing	43,902
Vision	25,478
Cognitive	37,137
Ambulatory	88,380
Self-Care	31,690
Independent Living	58,705
With No Disabilities	288,764
Probably Alzheimer's Cases (65+) ⁸	40,210

Source: DOEA calculations based on EDR, 2010-14 ACS data, and Alzheimer's Disease Facts and Figures Report, 2017

Medical Professionals	
Medical Doctors	
Licensed	4,780
Limited License	2
Critical Need Area License	38
Restricted	0
Medical Faculty Certification	1
Public Health Certificate	0
Specialties	
Licensed Podiatric Physicians	210
Licensed Osteopathic Physicians	858
Licensed Chiropractic Physicians	652
Licensed Registered Nurses	25,103

Source: Florida Department of Health, 2016

Unless otherwise noted, the data presented in this *Profile* refers to elder populations in Florida age 60 and older.

2017 Profile of Older Floridians

Broward



Skilled Nursing Facility (SNF) Utilization	
SNF Beds	4,672
Community Beds	4,349
Sheltered Beds	167
Veterans' Affairs Administration Beds	120
Other Beds	36
SNFs With Beds	40
Community Beds	36
Sheltered Beds	2
Veterans' Affairs Administration Beds	1
Other Beds	1
SNFs With Community Beds	36
Community Bed Days	1,590,174
Community Patient Days	1,314,450
Medicaid Patient Days	790,169
Occupancy Rate	82.7%
Percent Medicaid	60.1%

Assisted Living Facility	
Total Beds	7,636
OSS Beds ⁹	1,281
Non-OSS Beds	6,355
Total Facilities	249
Facilities with ECC License ¹⁰	17
Facilities with LMH License ¹¹	35
Facilities with LNS License ¹²	24

Adult Family Care Homes	
Homes	15
Beds	69

Ambulatory Surgical Centers	
Facilities	24
Operating Rooms	77
Recovery Beds	246

Home Health Agencies	
Agencies	234
Medicaid Certified Agencies	65
Medicare Certified Agencies	127

Hospitals	
Hospitals	24
Hospitals with Skilled Nursing Units	0
Hospital Beds	6,523
Skilled Nursing Unit Beds	119

Homemaker & Companion Service Companies	
Companies	176

Adult Day Care	
Facilities	26
Capacity	1,645

Medicaid & Medicare Eligibility	
Medicaid Eligible - All Ages	354,921
60+ Medicaid Eligible	61,364
Dual Eligible - All Ages	67,833
60+ Dual Eligible	53,912

Source for Page: AHCA, 2016

2017 Profile of Older Floridians

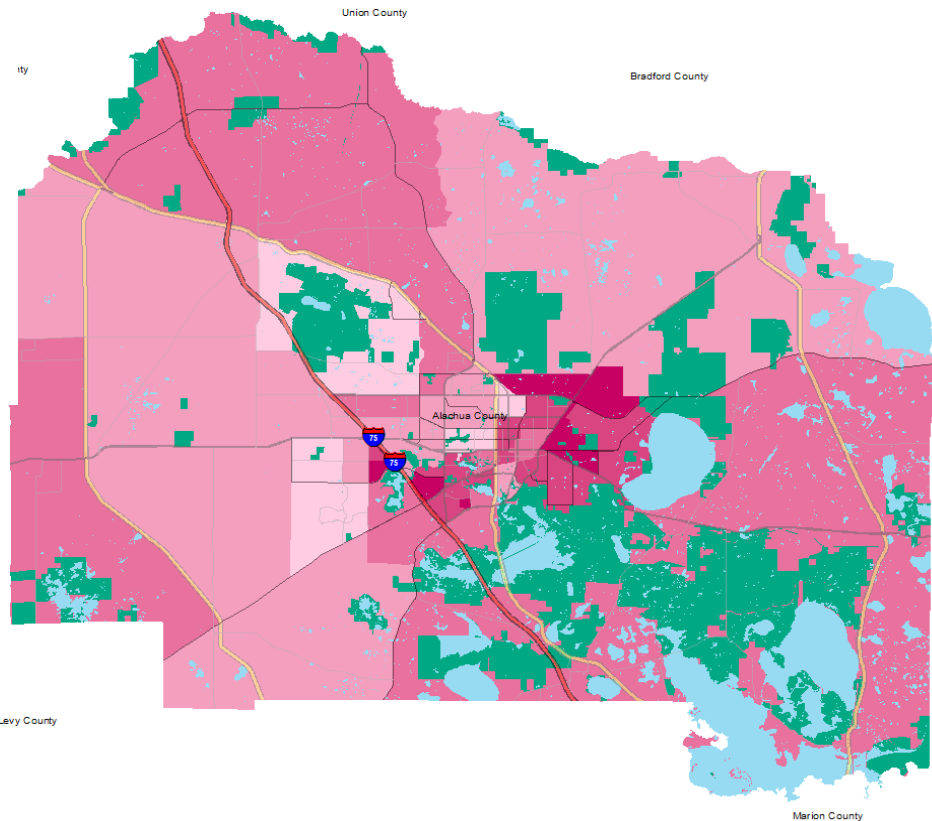
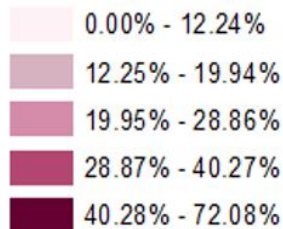
Broward



Elder Needs Index

Elder Needs Index (all factors)

ENI



The Elder Needs Index (ENI) is a composite measure that includes: (1) the percentage of the 60 and older population that is age 85 and older; (2) the percentage of the 55 and older population who are members of racial or ethnic minority groups; (3) the percentage of the 65 and older population with one or more disability; and (4) the percentage of the 55 and older population living below 125% of the Federal Poverty Level. The Index is an averaged score that indicates senior citizens' overall level of risk for a probable need of social services within a geographic area. It is not a percentage of the area's population. The green areas of the map represent current conservation land such as national parks, state forests, wildlife management areas, local and private preserves. The blue areas of the map represent current water features such as lakes, streams, rivers, and coastlines. Complete maps available at http://elderaffairs.state.fl.us/does/eni_home.php

Source: Florida Department of Elder Affairs using U.S. Census Bureau, 2008-12 ACS data

Useful Websites

- [Office of Economic & Demographic Research \(EDR\)](#)
- [U.S. Census Bureau, American Community Survey](#)
- [U.S. Census Bureau, Quick Facts](#)
- [Agency for Health Care Administration \(AHCA\)](#)

- [FL Division of Emergency Management \(Shelters\)](#)
- [Florida Housing Data Clearinghouse](#)
- [County Chronic Disease Profile](#)

Unless otherwise noted, the data presented in this *Profile* refers to elder populations in Florida age 60 and older.

