

2017 Profile of Older Floridians

Bay



Population by Age Category		
All Ages	177,949	100.0%
Under 18	38,109	21.4%
Under 60	136,682	76.8%
18-59	98,573	55.4%
60+	41,267	23.2%
65+	29,867	16.8%
70+	20,246	11.4%
75+	12,886	7.2%
80+	7,579	4.3%
85+	3,952	2.2%

Source: Office of Economic and Demographic Research, 2016

Population by Race and Ethnicity		
White	37,064	89.8%
Black	3,160	7.7%
Other Minorities	1,043	2.5%
Total Hispanic	918	2.2%
White	807	2.0%
Non-White	111	0.3%
Total Non-Hispanic	40,349	97.8%
Total Racial and Hispanic Minorities ²	5,010	12.1%

Source: EDR, 2016

Population by Gender		
Male	19,057	46.2%
Female	22,210	53.8%

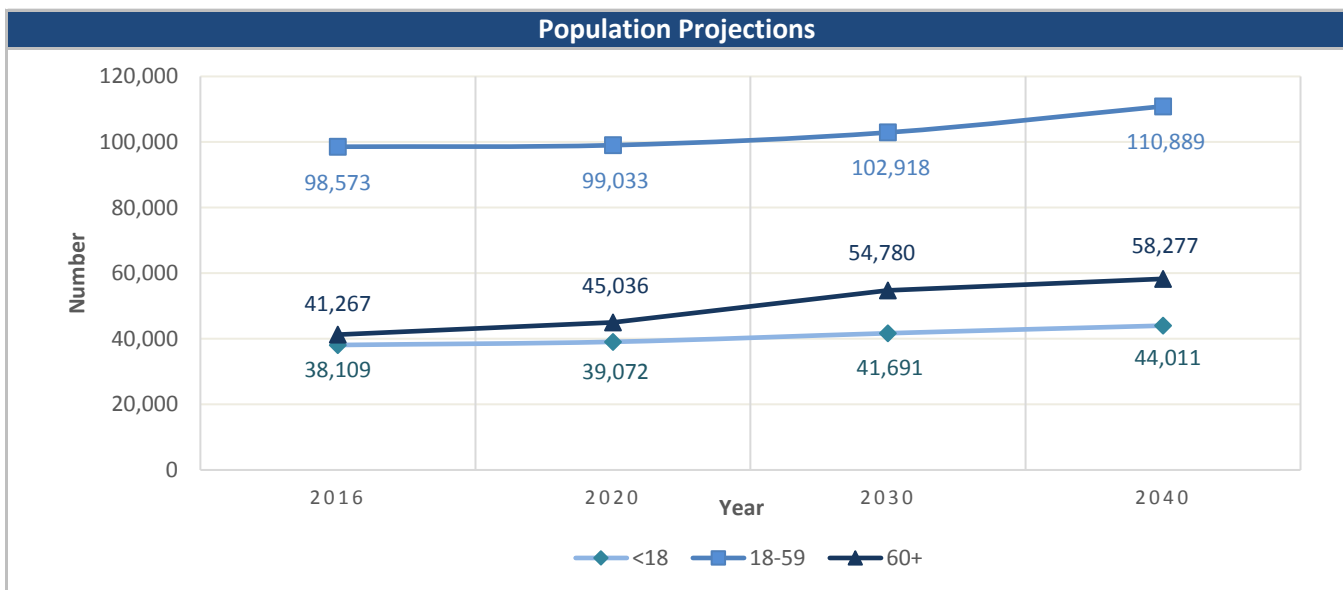
Source: EDR, 2016

English Proficiency	
With Limited English Proficiency ¹	360

Source: DOEA calculations based on EDR and 2010-14 ACS data

Financial Status		%
Below Poverty Guideline	3,947	9.6%
Below 125% of Poverty Guideline	5,712	13.8%
Minority Below Poverty Guideline	1,004	2.4%
Minority Below 125% of Poverty Guideline	1,290	3.1%

Source: DOEA calculations based on EDR and 2010-14 ACS data

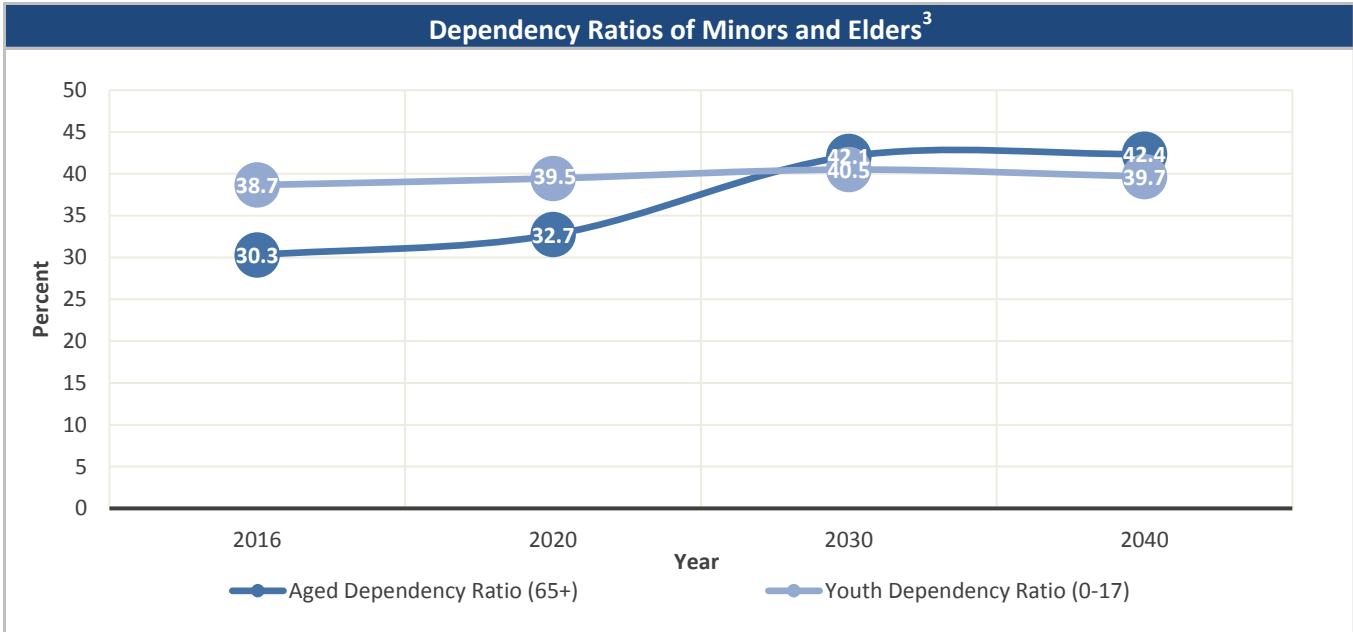


Source: Office of Economic and Demographic Research, 2016

Unless otherwise noted, the data presented in this *Profile* refers to elder populations in Florida age 60 and older.

2017 Profile of Older Floridians

Bay



Source: Office of Economic and Demographic Research, 2016

Grandparents	
Living With Own Grandchildren*	1,622
Grandparent Responsible for Own Grandchildren*	704
Grandparent Not Responsible for Own Grandchildren*	918
Not Living With Own Grandchildren*	39,645

*Grandchildren Under Age 18

Source: DOEA calculations based on EDR and 2010-14 ACS data

SNAP or Food Stamps	
Participants	2,982
Potentially Eligible	5,712
Participation Rate	52.2%

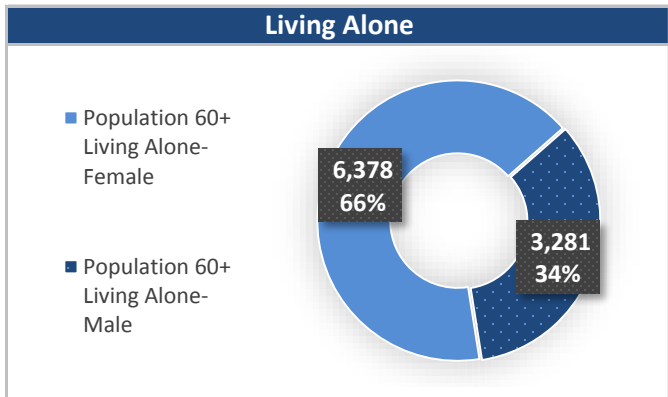
Source: Florida Department of Children and Families, 2016

Rural Designation	
Rural (Yes/No)	NO

Source: Rural Economic Development Initiative

Medically Underserved (65+)	
Total Medically Underserved ⁴	16,557
Living in Areas Defined as Having Medically Underserved Populations	-
Living in Medically Underserved Areas	16,557

Source: DOH and U.S. HHS, Data as of 8/25/2017



Source: DOEA calculations based on EDR and 2010-14 ACS data

Unless otherwise noted, the data presented in this *Profile* refers to elder populations in Florida age 60 and older.

2017 Profile of Older Floridians

Bay

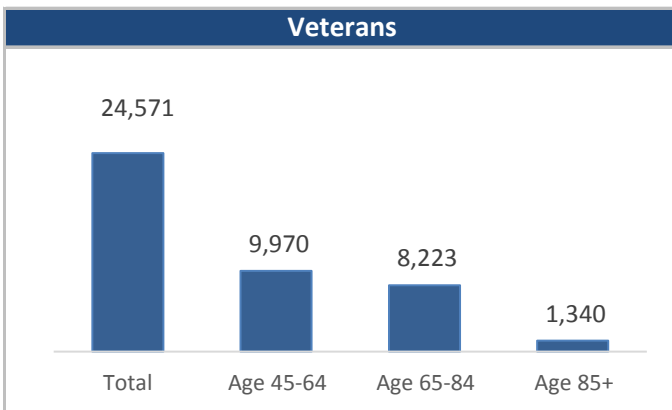


Florida Registered Voters	
Elder Voters	35,961
Percent of All Voters	30.8%

Source: FL Department of State, 2016

Florida Driver's License	
Elder Drivers	41,477
Percent of All Drivers	27.1%

Source: FL Department of Highway Safety & Motor Vehicles, 2016



Source: FL Department of Veterans' Affairs

Households With Cost Burden Above 30% and Income Below 50% Area Median Income (65+) ⁵	
Elder Households	18,330
Percent of All Households	17.7%

Source: The Shimberg Center for Housing Studies, 2016

Cost of Living, Annual Expenses(65+) ⁶	
Single Elders	
Owner without Mortgage	\$19,920
Renter, one bedroom	\$24,540
Owner with Mortgage	\$30,516
Elder Couple	
Owner without Mortgage	\$31,908
Renter, one bedroom	\$36,528
Owner with Mortgage	\$42,504

Source: Wider Opportunities for Women Elder Economic Security Standard™ Index (Elder Index), Data as of 8/16/2017

Retirement (65+)	
Disability Insurance (OASDI) Beneficiaries	20,737
Percent OASDI Beneficiaries	69.4%

Source: DOEA calculations based on EDR and the U.S. Social Security Administration data, 2016

Median Household Income for All Ages	
2011-2015	\$47,368

Source: U.S. Census Bureau, 2011-2015 American Community Survey 5-Year Estimates

Disability Status	
With One Type of Disability ⁷	6,420
With Two or More Disabilities	8,712
Total With Any Disability	
Hearing	6,627
Vision	3,150
Cognitive	4,203
Ambulatory	10,335
Self-Care	2,827
Independent Living	5,228
With No Disabilities	26,135
Probable Alzheimer's Cases (65+) ⁸	3,776

Source: DOEA calculations based on EDR, 2010-14 ACS data, and Alzheimer's Disease Facts and Figures Report, 2017

Medical Professionals	
Medical Doctors	
Licensed	378
Limited License	1
Critical Need Area License	6
Restricted	0
Medical Faculty Certification	0
Public Health Certificate	0
Specialties	
Licensed Podiatric Physicians	9
Licensed Osteopathic Physicians	29
Licensed Chiropractic Physicians	33
Licensed Registered Nurses	2,415

Source: Florida Department of Health, 2016

Unless otherwise noted, the data presented in this *Profile* refers to elder populations in Florida age 60 and older.

2017 Profile of Older Floridians

Bay



Skilled Nursing Facility (SNF) Utilization	
SNF Beds	974
Community Beds	854
Sheltered Beds	-
Veterans' Affairs Administration Beds	120
Other Beds	-
SNFs With Beds	10
Community Beds	9
Sheltered Beds	-
Veterans' Affairs Administration Beds	1
Other Beds	-
SNFs With Community Beds	9
Community Bed Days	312,564
Community Patient Days	280,653
Medicaid Patient Days	182,859
Occupancy Rate	89.8%
Percent Medicaid	65.2%

Assisted Living Facility	
Total Beds	576
OSS Beds ⁹	187
Non-OSS Beds	389
Total Facilities	11
Facilities with ECC License ¹⁰	2
Facilities with LMH License ¹¹	3
Facilities with LNS License ¹²	5

Adult Family Care Homes	
Homes	-
Beds	-

Ambulatory Surgical Centers	
Facilities	6
Operating Rooms	14
Recovery Beds	51

Home Health Agencies	
Agencies	17
Medicaid Certified Agencies	7
Medicare Certified Agencies	9

Hospitals	
Hospitals	5
Hospitals with Skilled Nursing Units	0
Hospital Beds	730
Skilled Nursing Unit Beds	0

Homemaker & Companion Service Companies	
Companies	5

Medicaid & Medicare Eligibility	
Medicaid Eligible - All Ages	37,956
60+ Medicaid Eligible	4,316
Dual Eligible - All Ages	6,280
60+ Dual Eligible	3,808

Adult Day Care	
Facilities	-
Capacity	-

Source for Page: AHCA, 2016

2017 Profile of Older Floridians

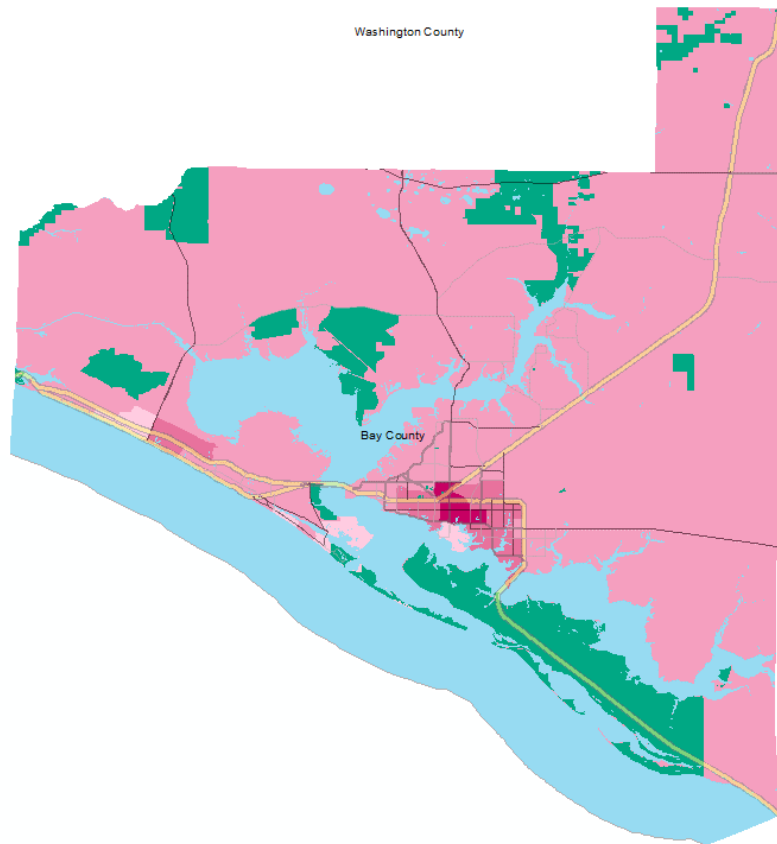
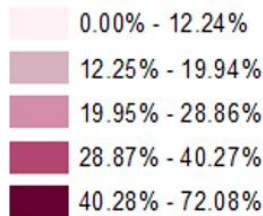
Bay



Elder Needs Index

Elder Needs Index (all factors)

ENI



The Elder Needs Index (ENI) is a composite measure that includes: (1) the percentage of the 60 and older population that is age 85 and older; (2) the percentage of the 55 and older population who are members of racial or ethnic minority groups; (3) the percentage of the 65 and older population with one or more disability; and (4) the percentage of the 55 and older population living below 125% of the Federal Poverty Level. The Index is an averaged score that indicates senior citizens' overall level of risk for a probable need of social services within a geographic area. It is not a percentage of the area's population. The green areas of the map represent current conservation land such as national parks, state forests, wildlife management areas, local and private preserves. The blue areas of the map represent current water features such as lakes, streams, rivers, and coastlines. Complete maps available at http://elderaffairs.state.fl.us/does/eni_home.php

Source: Florida Department of Elder Affairs using U.S. Census Bureau, 2008-12 ACS data

Useful Websites

- [Office of Economic & Demographic Research \(EDR\)](#)
- [U.S. Census Bureau, American Community Survey](#)
- [U.S. Census Bureau, Quick Facts](#)
- [Agency for Health Care Administration \(AHCA\)](#)

- [FL Division of Emergency Management \(Shelters\)](#)
- [Florida Housing Data Clearinghouse](#)
- [County Chronic Disease Profile](#)

Unless otherwise noted, the data presented in this *Profile* refers to elder populations in Florida age 60 and older.

2017 Profile of Older Floridians

Bay



¹ Those who report speaking English "Not well" or "Not at all" are defined as having Limited English Proficiency (LEP) in this profile.

² Total Minorities = (60+ Population) - (White Non-Hispanic 60+)

³ A "dependency ratio" is commonly depicted as a ratio of workers to non-workers. Rather than using labor-force participation rates, which fluctuate, a stable dependency ratio can be estimated by using the number of individuals in the population who fall into age groups generally aligned with school-aged kids, working age adults, and retired seniors. For this graphic, working age adults (defined as 18-59) were compared to minors (age 0-17)(youth dependency ratio) and seniors (age 65+)(aged dependency ratio).

⁴ Medically Underserved Areas/Populations are areas or populations designated by Health Resources & Services Administration(HRSA) as having too few primary care providers, high infant mortality, high poverty or a high elderly population.

⁵ Households age 65 and older paying more than 30 percent of income for housing costs (including utilities) and have an income below 50 percent of the area median income.

⁶ Wider Opportunities for Women Elder Economic Security Standard™ Index (Elder Index) measures how much income retired older adults require to meet their basic needs without public or private assistance. The Elder Index measures basic expenses for elders age 65+ living in the community, not in institutions. Annual expenses include: housing, including utilities, taxes, insurance; food; transportation; health care, based on good health; and miscellaneous. Data found at <http://www.basiceconomicsecurity.org/EI/>

⁷ With One Type of Disability: 60+ people who have only one type of disability

⁸ Probable Alzheimer's Cases = (65-74 Population x 0.035430) + (75-84 Population x 0.168209) + (85+ Population x 0.422937) Alzheimer's by Age in 2017 Alzheimer's Disease Facts and Figures Report used to develop calculation can be found at: http://www.alz.org/documents_custom/facts_2017/statesheet_florida.pdf?type=interior_map&facts=undefined&facts=facts

⁹ OSS Beds: Optional State Supplementation Beds. Optional State Supplementation (OSS) is a cash assistance program. Its purpose is to supplement a person's income to help pay for costs in an assisted living facility, mental health residential treatment facility, and adult family care home. It is NOT a Medicaid program.

¹⁰ ECC License: Extended Congregate Care License. The ECC license is a specialty license that enables a facility to provide, directly or through contract, services beyond those permissible under the standard license, including acts performed by licensed nurses, and supportive services defined by rule to persons who otherwise would be disqualified from continued residence in a facility licensed under this part.

¹¹ LMH License: Limited Mental Health License. Any facility intending to admit three or more mental health residents must apply for and obtain a limited mental health license from AHCA's Assisted Living Unit before accepting the third mental health resident.

¹² LNS License: Limited Nursing Services License. The LNS license is a specialty license that enables a facility to provide a select number of nursing services.