

# 2015 Profile of Older Floridians

Santa Rosa



| Population by Age Category |         |        |
|----------------------------|---------|--------|
| All Ages                   | 162,925 | 100.0% |
| Under 18                   | 36,674  | 22.5%  |
| Under 60                   | 129,805 | 79.7%  |
| 18-59                      | 93,131  | 57.2%  |
| 60+                        | 33,120  | 20.3%  |
| 65+                        | 23,428  | 14.4%  |
| 70+                        | 15,284  | 9.4%   |
| 75+                        | 9,293   | 5.7%   |
| 80+                        | 5,029   | 3.1%   |
| 85+                        | 2,165   | 1.3%   |

Source: Office of Economic and Demographic Research, 2015

| Population by Race and Ethnicity                  |        |       |
|---------------------------------------------------|--------|-------|
| White                                             | 31,294 | 94.5% |
| Black                                             | 1,016  | 3.1%  |
| Other Minorities                                  | 887    | 2.7%  |
| Total Hispanic                                    | 666    | 2.0%  |
| White                                             | 585    | 1.8%  |
| Non-White                                         | 81     | 0.2%  |
| Total Non-Hispanic                                | 32,454 | 98.0% |
| Total Racial and Hispanic Minorities <sup>2</sup> | 2,411  | 7.3%  |

Source: Office of Economic and Demographic Research, 2015

| Population by Gender |        |       |
|----------------------|--------|-------|
| Male                 | 15,694 | 47.4% |
| Female               | 17,426 | 52.6% |

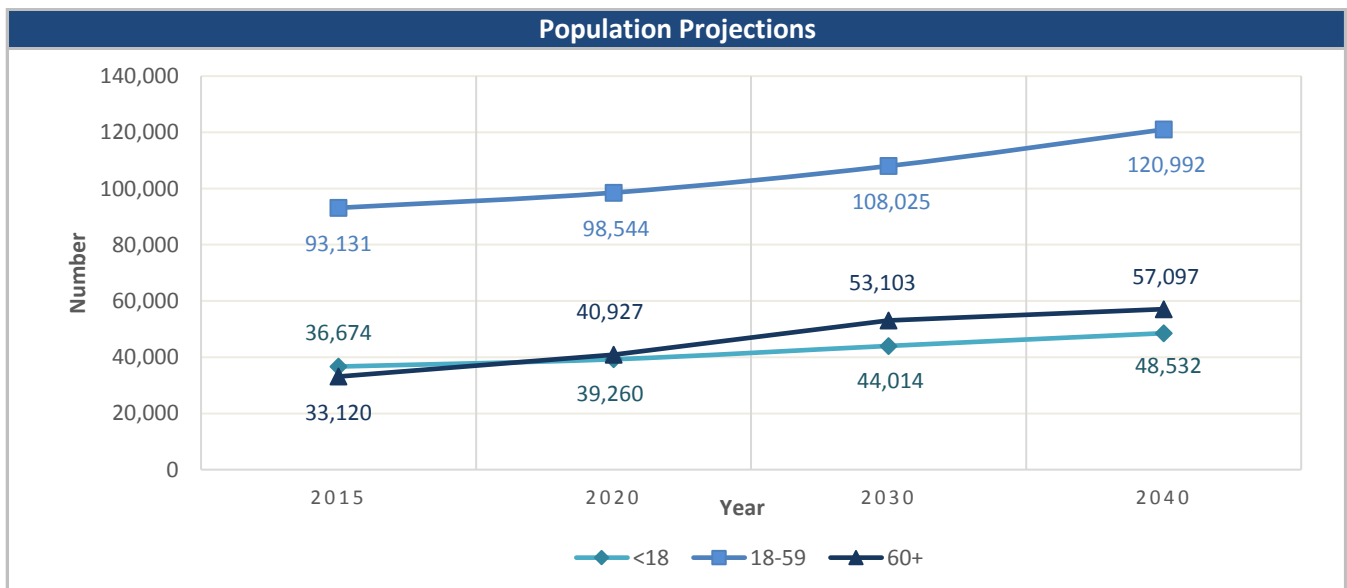
Source: Office of Economic and Demographic Research, 2015

| English Proficiency                           |     |
|-----------------------------------------------|-----|
| With Limited English Proficiency <sup>1</sup> | 219 |

Source: DOEA calculations based on EDR and 2009-13 ACS data

| Financial Status                         |       | % 60+ |
|------------------------------------------|-------|-------|
| Below Poverty Guideline                  | 2,361 | 7.1%  |
| Below 125% of Poverty Guideline          | 3,359 | 10.1% |
| Minority Below Poverty Guideline         | 255   | 0.8%  |
| Minority Below 125% of Poverty Guideline | 319   | 1.0%  |

Source: DOEA calculations based on EDR data and 2009-13 ACS data

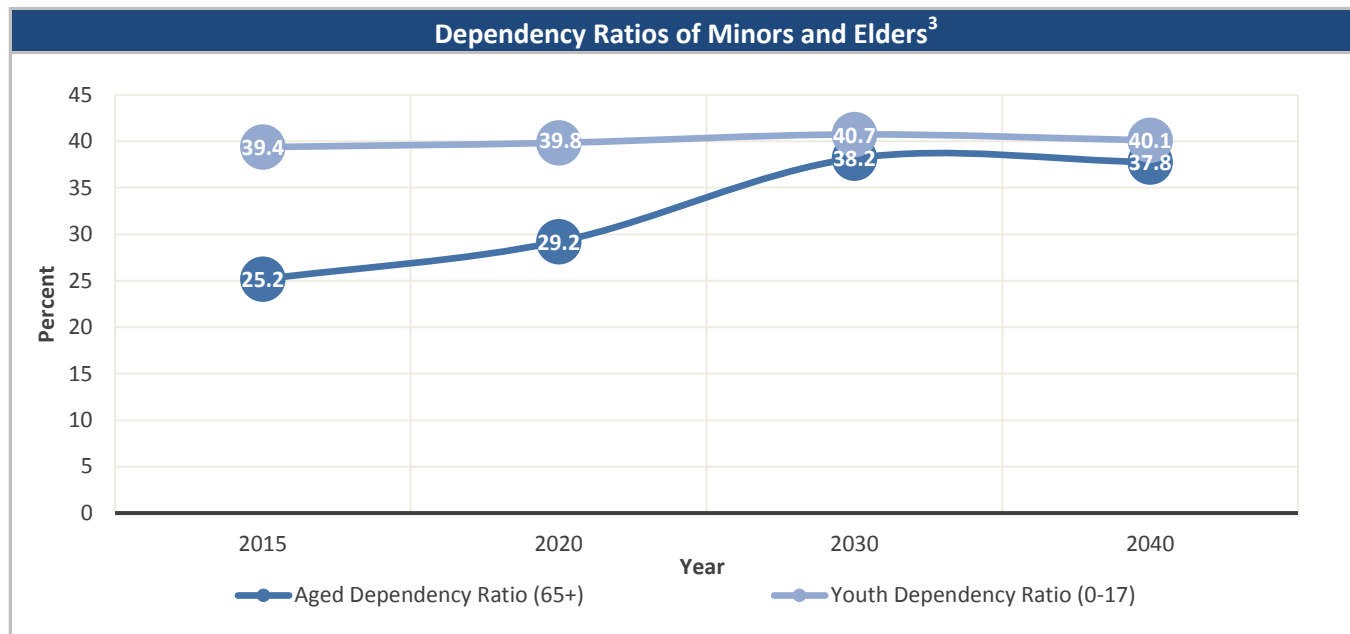


Source: Office of Economic and Demographic Research, 2015

Unless otherwise noted, the data presented in this *Profile* refers to elder populations in Florida age 60 and older.

# 2015 Profile of Older Floridians

Santa Rosa



Source: Office of Economic and Demographic Research, 2015

| Grandparents                                       |        |
|----------------------------------------------------|--------|
| Living With Own Grandchildren*                     | 1,571  |
| Grandparent Responsible for Own Grandchildren*     | 720    |
| Grandparent Not Responsible for Own Grandchildren* | 851    |
| Not Living With Own Grandchildren*                 | 31,548 |

\*Grandchildren Under Age 18

Source: DOEA calculations based on EDR and 2009-13 ACS data

| SNAP or Food Stamps  |       |
|----------------------|-------|
| Participants         | 1,584 |
| Potentially Eligible | 3,359 |
| Participation Rate   | 47.2% |

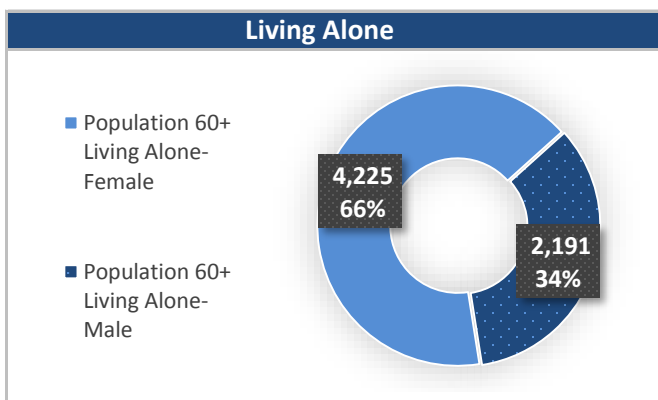
Source: Florida Department of Children and Families, 2015

| Rural Designation |    |
|-------------------|----|
| Rural (Yes/No)    | NO |

Source: Rural Economic Development Initiative

| Medically Underserved (65+)                                         |       |
|---------------------------------------------------------------------|-------|
| Total Medically Underserved <sup>4</sup>                            | 6,197 |
| Living in Areas Defined as Having Medically Underserved Populations | -     |
| Living in Medically Underserved Areas                               | 6,197 |

Source: DOH and U.S. HHS, Data as of 6/13/2016



Source: DOEA calculations based on EDR data and 2009-13 ACS data

Unless otherwise noted, the data presented in this *Profile* refers to elder populations in Florida age 60 and older.

# 2015 Profile of Older Floridians

Santa Rosa

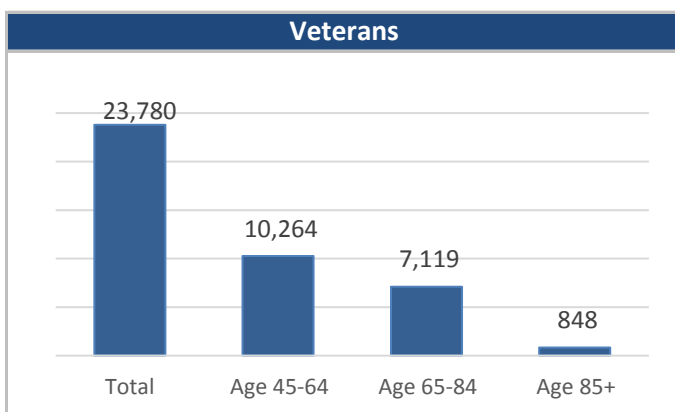


| Florida Registered Voters |        |
|---------------------------|--------|
| Elder Voters              | 32,532 |
| Percent of All Voters     | 26.1%  |

Source: FL Department of State, 2016

| Florida Driver's License |        |
|--------------------------|--------|
| Elder Drivers            | 34,794 |
| Percent of All Drivers   | 25.1%  |

Source: FL Department of Highway Safety & Motor Vehicles, 2015



Source: FL Department of Veterans' Affairs

| Households With Cost Burden Above 30% and Income Below 50% Area Median Income (65+) <sup>5</sup> |        |
|--------------------------------------------------------------------------------------------------|--------|
| Elder Households                                                                                 | 15,059 |
| Percent of All Households                                                                        | 14.7%  |

Source: The Shimberg Center for Housing Studies, 2015

| Cost of Living, Annual Expenses <sup>6</sup> |          |
|----------------------------------------------|----------|
| <b>Single Elders</b>                         |          |
| Owner without Mortgage                       | \$20,652 |
| Renter, one bedroom                          | \$24,936 |
| Owner with Mortgage                          | \$29,496 |
| <b>Elder Couple</b>                          |          |
| Owner without Mortgage                       | \$33,312 |
| Renter, one bedroom                          | \$37,596 |
| Owner with Mortgage                          | \$42,156 |

Source: Wider Opportunities for Women Elder Economic Security Standard™ Index (Elder Index), Data as of 5/11/2016

| Retirement (65+)                           |        |
|--------------------------------------------|--------|
| Disability Insurance (OASDI) Beneficiaries | 15,325 |
| Percent OASDI Beneficiaries                | 65.4%  |

Source: DOEA calculations based on EDR and the U.S. Social Security Administration data, 2015

| Median Household Income for All Ages |          |
|--------------------------------------|----------|
| 2010-2014                            | \$58,199 |

Source: U.S. Census Bureau, 2014

| Disability Status                             |        |
|-----------------------------------------------|--------|
| With One Type of Disability <sup>7</sup>      | 5,168  |
| With Two or More Disabilities                 | 5,682  |
| Total With Any Disability                     |        |
| Hearing                                       | 4,318  |
| Vision                                        | 1,609  |
| Cognitive                                     | 2,464  |
| Ambulatory                                    | 7,302  |
| Self-Care                                     | 2,036  |
| Independent Living                            | 3,885  |
| With No Disabilities                          | 22,276 |
| Probably Alzheimer's Cases (65+) <sup>8</sup> | 2,584  |

Source: DOEA calculations based on EDR, 2009-13 ACS data, and Alzheimer's Disease Facts and Figures Report, 2015

| Medical Professionals             |       |
|-----------------------------------|-------|
| <b>Medical Doctors</b>            |       |
| Licensed                          | 327   |
| Limited License                   | 0     |
| Critical Need Area License        | 0     |
| Restricted                        | 0     |
| Medical Faculty Certification     | 0     |
| Public Health Certificate         | 0     |
| <b>Specialties</b>                |       |
| Licensed Podiatric Physicians     | 1     |
| Licensed Osteopathic Physicians   | 54    |
| Licensed Chiropractic Physicians  | 22    |
| <b>Licensed Registered Nurses</b> | 2,886 |

Source: Florida Department of Health, 2015

Unless otherwise noted, the data presented in this *Profile* refers to elder populations in Florida age 60 and older.

# 2015 Profile of Older Floridians

Santa Rosa



| Skilled Nursing Facility (SNF) Utilization |         |
|--------------------------------------------|---------|
| <b>SNF Beds</b>                            | 410     |
| Community Beds                             | 410     |
| Sheltered Beds                             | -       |
| Veterans' Affairs Administration Beds      | -       |
| Other Beds                                 | -       |
| <b>SNFs With Beds</b>                      | 4       |
| Community Beds                             | 4       |
| Sheltered Beds                             | -       |
| Veterans' Affairs Administration Beds      | -       |
| Other Beds                                 | -       |
| <b>SNFs With Community Beds</b>            | 4       |
| Community Bed Days                         | 149,650 |
| Community Patient Days                     | 136,702 |
| Medicaid Patient Days                      | 94,554  |
| Occupancy Rate                             | 91.3%   |
| Percent Medicaid                           | 69.2%   |

| Assisted Living Facility                  |     |
|-------------------------------------------|-----|
| <b>Total Beds</b>                         | 599 |
| OSS Beds <sup>9</sup>                     | 115 |
| Non-OSS Beds                              | 484 |
| <b>Total Facilities</b>                   | 8   |
| Facilities with ECC License <sup>10</sup> | 2   |
| Facilities with LMH License <sup>11</sup> | 2   |
| Facilities with LNS License <sup>12</sup> | 6   |

| Adult Family Care Homes |   |
|-------------------------|---|
| Homes                   | - |
| Beds                    | - |

| Ambulatory Surgical Centers |    |
|-----------------------------|----|
| Facilities                  | 1  |
| Operating Rooms             | 8  |
| Recovery Beds               | 21 |

| Home Health Agencies        |   |
|-----------------------------|---|
| <b>Agencies</b>             | 2 |
| Medicaid Certified Agencies | 1 |
| Medicare Certified Agencies | 2 |

| Hospitals                            |     |
|--------------------------------------|-----|
| <b>Hospitals</b>                     | 4   |
| Hospitals with Skilled Nursing Units | 0   |
| <b>Hospital Beds</b>                 | 355 |
| Skilled Nursing Unit Beds            | 0   |

| Homemaker & Companion Service Companies |   |
|-----------------------------------------|---|
| Companies                               | 5 |

| Medicaid & Medicare Eligibility |        |
|---------------------------------|--------|
| Medicaid Eligible - All Ages    | 28,967 |
| 60+ Medicaid Eligible           | 2,997  |
| Dual Eligible - All Ages        | 4,428  |
| 60+ Dual Eligible               | 2,653  |

| Adult Day Care |    |
|----------------|----|
| Facilities     | 1  |
| Capacity       | 12 |

Source for Page: AHCA, 2015

# 2015 Profile of Older Floridians

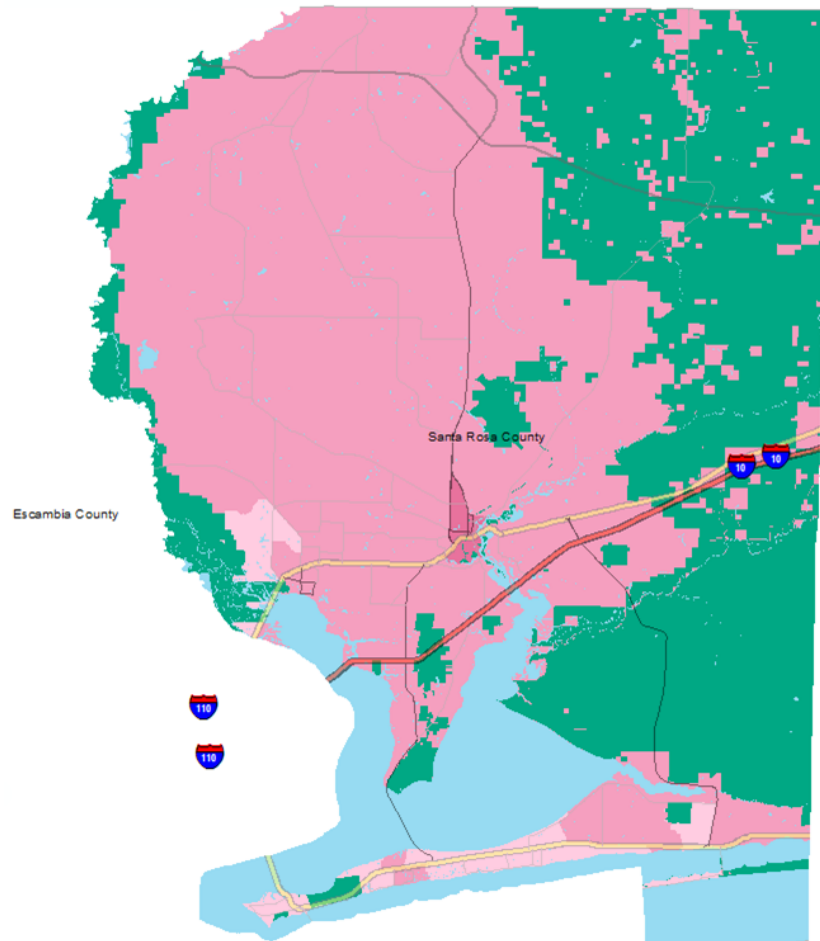
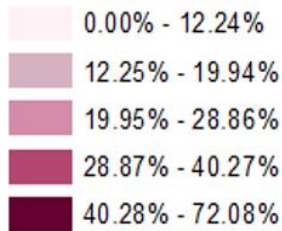
Santa Rosa



## Elder Needs Index

### Elder Needs Index (all factors)

#### ENI



The Elder Needs Index (ENI) is a composite measure that includes: (1) the percentage of the 60 and older population that is age 85 and older; (2) the percentage of the 55 and older population who are members of racial or ethnic minority groups; (3) the percentage of the 65 and older population with one or more disability; and (4) the percentage of the 55 and older population living below 125% of the Federal Poverty Level. The Index is an averaged score that indicates senior citizens' overall level of risk for a probable need of social services within a geographic area. It is not a percentage of the area's population. The green areas of the map represent current conservation land such as national parks, state forests, wildlife management areas, local and private preserves. The blue areas of the map represent current water features such as lakes, streams, rivers, and coastlines. Complete maps available at [http://elderaffairs.state.fl.us/doea/eni\\_home.php](http://elderaffairs.state.fl.us/doea/eni_home.php)

Source: Florida Department of Elder Affairs using U.S. Census Bureau, 2008-12 ACS data

### Useful Websites

[Office of Economic & Demographic Research \(EDR\)](#)  
[U.S. Census Bureau, American Community Survey](#)  
[U.S. Census Bureau, Quick Facts](#)  
[Agency for Health Care Administration \(AHCA\)](#)

[FL Division of Emergency Management \(Shelters\)](#)  
[Florida Housing Data Clearinghouse](#)  
[County Chronic Disease Profile](#)

Unless otherwise noted, the data presented in this *Profile* refers to elder populations in Florida age 60 and older.

# 2015 Profile of Older Floridians

## Santa Rosa



<sup>1</sup> Those who report speaking English "Not well" or "Not at all" are defined as having Limited English Proficiency (LEP) in this profile.

<sup>2</sup> Total Minorities = (60+ Population) - (White Non-Hispanic 60+)

<sup>3</sup> A "dependency ratio" is commonly depicted as a ratio of workers to non-workers. Rather than using labor-force participation rates, which fluctuate, a stable dependency ratio can be estimated by using the number of individuals in the population who fall into age groups generally aligned with school-aged kids, working age adults, and retired seniors. For this graphic, working age adults (defined as 18-59) were compared to minors (age 0-17)(youth dependency ratio) and seniors (age 65+)(aged dependency ratio).

<sup>4</sup> Medically Underserved Areas/Populations are areas or populations designated by HRSA as having too few primary care providers, high infant mortality, high poverty or a high elderly population.

<sup>5</sup> Households Paying More Than 30% of Income to Housing Costs (Including Utilities) and Have an Income Below 50% of the Area Median Income (65+)

<sup>6</sup> Wider Opportunities for Women Elder Economic Security Standard™ Index (Elder Index) measures how much income retired older adults require to meet their basic needs—without public or private assistance. The Elder Index measures basic expenses for elders age 65+ living in the community, not in institutions.

Annual expenses include: housing, including utilities, taxes, insurance; food; transportation; health care, based on good health; and miscellaneous. Data found at <http://www.basiceconomicsecurity.org/EI/>

<sup>7</sup> With One Type of Disability: 65+ people who have only one type of disability

<sup>8</sup> Probable Alzheimer's Cases = (65-74 Population x 0.034088) + (75-84 Population x 0.166265) +(85+ Population x 0.423518) Alzheimer's by Age in 2015 Alzheimer's Disease Facts and Figures Report used to develop calculation can be found at: [http://www.alz.org/documents\\_custom/facts\\_2015/alz\\_ff\\_florida.pdf?type=interior\\_map&facts=undefined&facts=facts](http://www.alz.org/documents_custom/facts_2015/alz_ff_florida.pdf?type=interior_map&facts=undefined&facts=facts)

<sup>9</sup> OSS Beds: Optional State Supplementation Beds. Optional State Supplementation (OSS) is a cash assistance program. Its purpose is to supplement a person's income to help pay for costs in an assisted living facility, mental health residential treatment facility, and adult family care home. It is NOT a Medicaid program.

<sup>10</sup> ECC License: Extended Congregate Care License. The ECC license is a specialty license that enables a facility to provide, directly or through contract, services beyond those permissible under the standard license, including acts performed by licensed nurses, and supportive services defined by rule to persons who otherwise would be disqualified from continued residence in a facility licensed under this part.

<sup>11</sup> LMH License: Limited Mental Health License. Any facility intending to admit three or more mental health residents must apply for and obtain a limited mental health license from AHCA's Assisted Living Unit before accepting the third mental health resident.

<sup>12</sup> LNS License: Limited Nursing Services License. A Limited Nursing Services (LNS) license is a specialty license that enables a facility to provide a select number of nursing services.