

2015 Profile of Older Floridians

Okaloosa



Population by Age Category		
All Ages	191,898	100.0%
Under 18	42,807	22.3%
Under 60	150,749	78.6%
18-59	107,942	56.2%
60+	41,149	21.4%
65+	30,038	15.7%
70+	20,404	10.6%
75+	13,403	7.0%
80+	7,825	4.1%
85+	3,610	1.9%

Source: Office of Economic and Demographic Research, 2015

Population by Race and Ethnicity		
White	36,991	89.9%
Black	2,632	6.4%
Other Minorities	1,620	3.9%
Total Hispanic	1,060	2.6%
White	914	2.2%
Non-White	146	0.4%
Total Non-Hispanic	40,089	97.4%
Total Racial and Hispanic Minorities ²	5,072	12.3%

Source: Office of Economic and Demographic Research, 2015

Population by Gender		
Male	18,900	45.9%
Female	22,249	54.1%

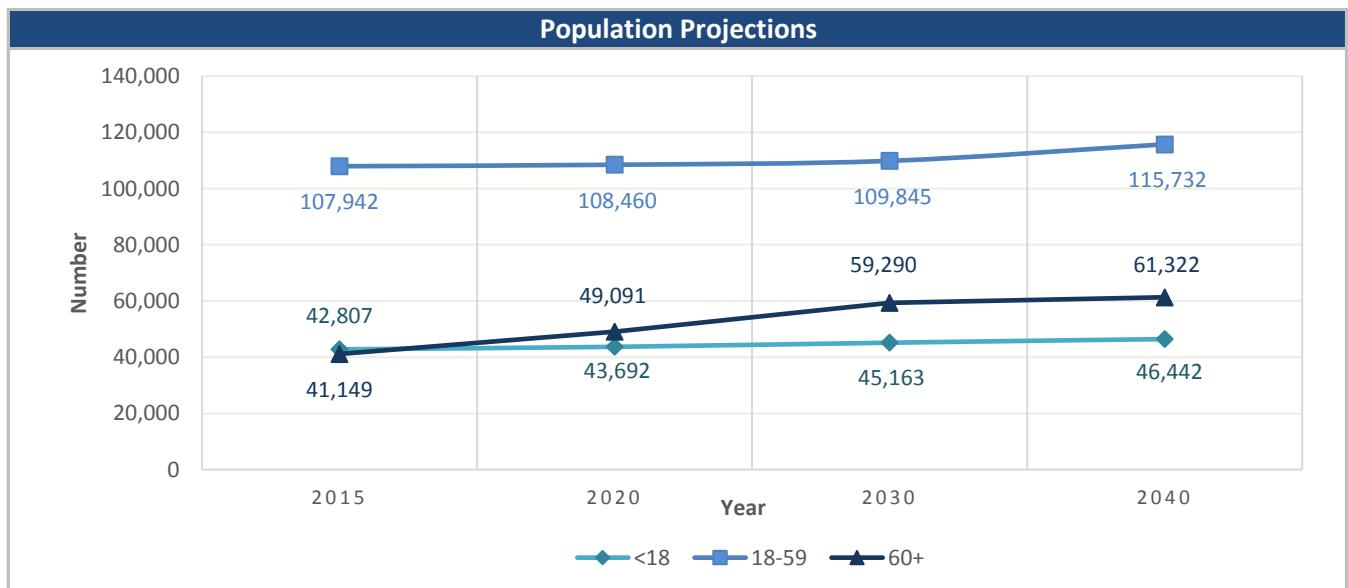
Source: Office of Economic and Demographic Research, 2015

English Proficiency	
With Limited English Proficiency ¹	378

Source: DOEA calculations based on EDR and 2009-13 ACS data

Financial Status		% 60+
Below Poverty Guideline	2,485	6.0%
Below 125% of Poverty Guideline	3,664	8.9%
Minority Below Poverty Guideline	458	1.1%
Minority Below 125% of Poverty Guideline	660	1.6%

Source: DOEA calculations based on EDR data and 2009-13 ACS data

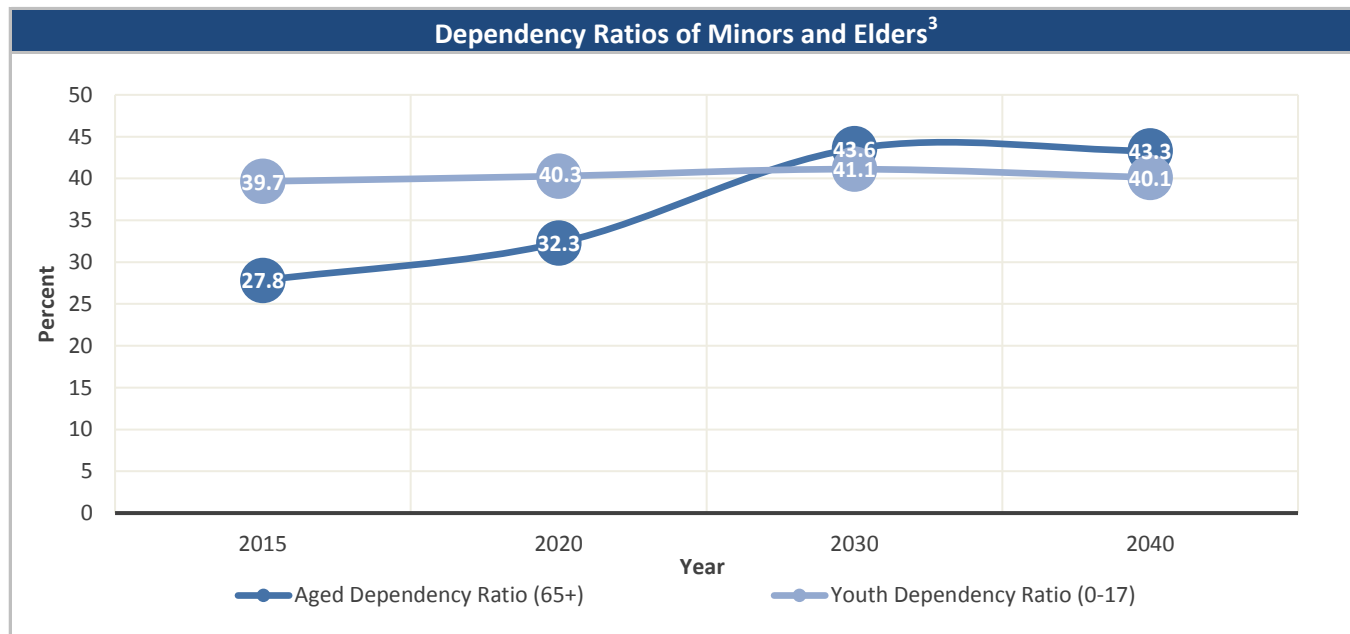


Source: Office of Economic and Demographic Research, 2015

Unless otherwise noted, the data presented in this *Profile* refers to elder populations in Florida age 60 and older.

2015 Profile of Older Floridians

Okaloosa



Source: Office of Economic and Demographic Research, 2015

Grandparents	
Living With Own Grandchildren*	1,975
Grandparent Responsible for Own Grandchildren*	655
Grandparent Not Responsible for Own Grandchildren*	1,315
Not Living With Own Grandchildren*	39,180

*Grandchildren Under Age 18

Source: DOEA calculations based on EDR and 2009-13 ACS data

SNAP or Food Stamps	
Participants	1,691
Potentially Eligible	3,664
Participation Rate	46.1%

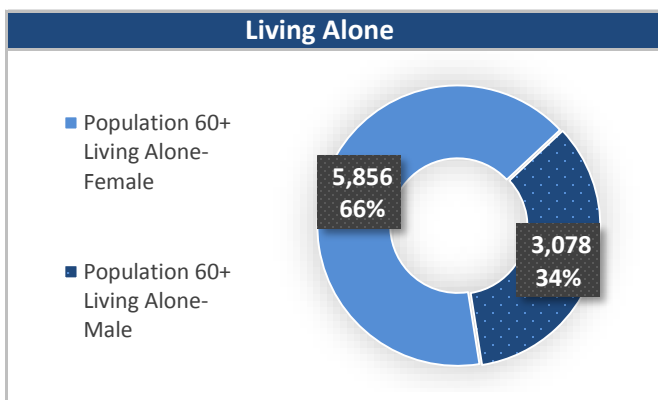
Source: Florida Department of Children and Families, 2015

Rural Designation	
Rural (Yes/No)	NO

Source: Rural Economic Development Initiative

Medically Underserved (65+)	
Total Medically Underserved ⁴	1,538
Living in Areas Defined as Having Medically Underserved Populations	-
Living in Medically Underserved Areas	1,538

Source: DOH and U.S. HHS, Data as of 6/13/2016



Source: DOEA calculations based on EDR data and 2009-13 ACS data

Unless otherwise noted, the data presented in this *Profile* refers to elder populations in Florida age 60 and older.

2015 Profile of Older Floridians

Okaloosa

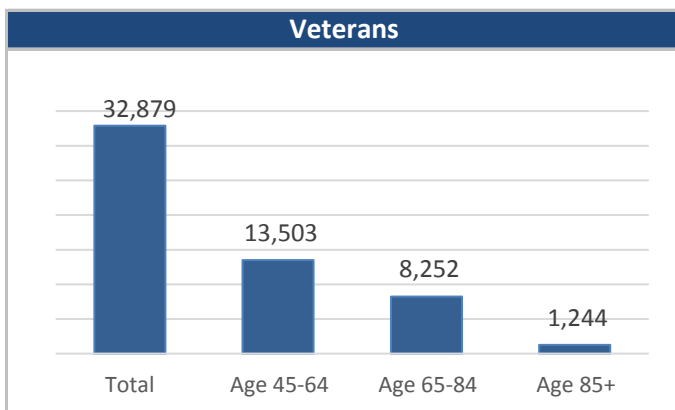


Florida Registered Voters	
Elder Voters	36,280
Percent of All Voters	28.8%

Source: FL Department of State, 2016

Florida Driver's License	
Elder Drivers	42,310
Percent of All Drivers	25.1%

Source: FL Department of Highway Safety & Motor Vehicles, 2015



Source: FL Department of Veterans' Affairs

Households With Cost Burden Above 30% and Income Below 50% Area Median Income (65+) ⁵	
Elder Households	19,713
Percent of All Households	14.0%

Source: The Shimberg Center for Housing Studies, 2015

Cost of Living, Annual Expenses ⁶	
Single Elders	
Owner without Mortgage	\$21,360
Renter, one bedroom	\$25,572
Owner with Mortgage	\$32,652
Elder Couple	
Owner without Mortgage	\$33,972
Renter, one bedroom	\$38,184
Owner with Mortgage	\$45,264

Source: Wider Opportunities for Women Elder Economic Security Standard™ Index (Elder Index), Data as of 5/11/2016

Retirement (65+)	
Disability Insurance (OASDI) Beneficiaries	20,387
Percent OASDI Beneficiaries	67.9%

Source: DOEA calculations based on EDR and the U.S. Social Security Administration data, 2015

Median Household Income for All Ages	
2010-2014	\$55,768

Source: U.S. Census Bureau, 2014

Disability Status	
With One Type of Disability ⁷	6,423
With Two or More Disabilities	6,933
Total With Any Disability	
Hearing	5,422
Vision	2,379
Cognitive	3,220
Ambulatory	9,180
Self-Care	2,808
Independent Living	4,713
With No Disabilities	27,787
Probably Alzheimer's Cases (65+) ⁸	3,724

Source: DOEA calculations based on EDR, 2009-13 ACS data, and Alzheimer's Disease Facts and Figures Report, 2015

Medical Professionals	
Medical Doctors	
Licensed	427
Limited License	1
Critical Need Area License	1
Restricted	0
Medical Faculty Certification	0
Public Health Certificate	0
Specialties	
Licensed Podiatric Physicians	8
Licensed Osteopathic Physicians	48
Licensed Chiropractic Physicians	55
Licensed Registered Nurses	2,181

Source: Florida Department of Health, 2015

Unless otherwise noted, the data presented in this *Profile* refers to elder populations in Florida age 60 and older.

2015 Profile of Older Floridians

Okaloosa



Skilled Nursing Facility (SNF) Utilization	
SNF Beds	899
Community Beds	899
Sheltered Beds	-
Veterans' Affairs Administration Beds	-
Other Beds	-
SNFs With Beds	8
Community Beds	8
Sheltered Beds	-
Veterans' Affairs Administration Beds	-
Other Beds	-
SNFs With Community Beds	8
Community Bed Days	328,135
Community Patient Days	279,350
Medicaid Patient Days	170,531
Occupancy Rate	85.1%
Percent Medicaid	61.0%

Assisted Living Facility	
Total Beds	525
OSS Beds ⁹	115
Non-OSS Beds	410
Total Facilities	11
Facilities with ECC License ¹⁰	3
Facilities with LMH License ¹¹	0
Facilities with LNS License ¹²	6

Adult Family Care Homes	
Homes	-
Beds	-

Ambulatory Surgical Centers	
Facilities	4
Operating Rooms	13
Recovery Beds	28

Home Health Agencies	
Agencies	12
Medicaid Certified Agencies	3
Medicare Certified Agencies	8

Hospitals	
Hospitals	5
Hospitals with Skilled Nursing Units	0
Hospital Beds	456
Skilled Nursing Unit Beds	0

Homemaker & Companion Service Companies	
Companies	6

Medicaid & Medicare Eligibility	
Medicaid Eligible - All Ages	36,331
60+ Medicaid Eligible	3,483
Dual Eligible - All Ages	5,219
60+ Dual Eligible	3,050

Adult Day Care	
Facilities	1
Capacity	40

Source for Page: AHCA, 2015

2015 Profile of Older Floridians

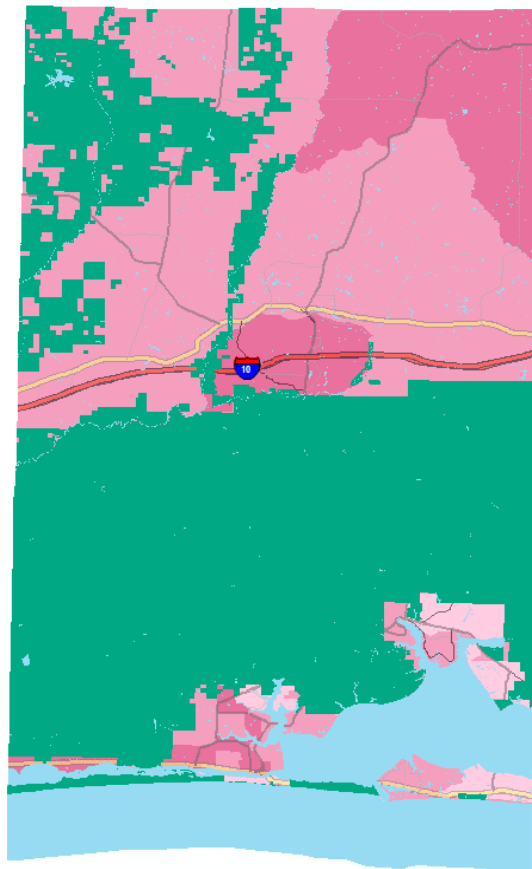
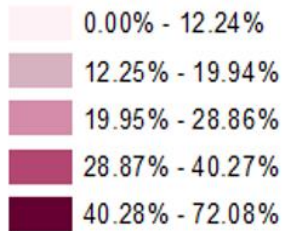
Okaloosa



Elder Needs Index

Elder Needs Index (all factors)

ENI



The Elder Needs Index (ENI) is a composite measure that includes: (1) the percentage of the 60 and older population that is age 85 and older; (2) the percentage of the 55 and older population who are members of racial or ethnic minority groups; (3) the percentage of the 65 and older population with one or more disability; and (4) the percentage of the 55 and older population living below 125% of the Federal Poverty Level. The Index is an averaged score that indicates senior citizens' overall level of risk for a probable need of social services within a geographic area. It is not a percentage of the area's population. The green areas of the map represent current conservation land such as national parks, state forests, wildlife management areas, local and private preserves. The blue areas of the map represent current water features such as lakes, streams, rivers, and coastlines. Complete maps available at http://elderaffairs.state.fl.us/doea/eni_home.php

Source: Florida Department of Elder Affairs using U.S. Census Bureau, 2008-12 ACS data

Useful Websites

[Office of Economic & Demographic Research \(EDR\)](#)
[U.S. Census Bureau, American Community Survey](#)
[U.S. Census Bureau, Quick Facts](#)
[Agency for Health Care Administration \(AHCA\)](#)

[FL Division of Emergency Management \(Shelters\)](#)
[Florida Housing Data Clearinghouse](#)
[County Chronic Disease Profile](#)

Unless otherwise noted, the data presented in this *Profile* refers to elder populations in Florida age 60 and older.

2015 Profile of Older Floridians

Okaloosa



¹ Those who report speaking English "Not well" or "Not at all" are defined as having Limited English Proficiency (LEP) in this profile.

² Total Minorities = (60+ Population) - (White Non-Hispanic 60+)

³ A "dependency ratio" is commonly depicted as a ratio of workers to non-workers. Rather than using labor-force participation rates, which fluctuate, a stable dependency ratio can be estimated by using the number of individuals in the population who fall into age groups generally aligned with school-aged kids, working age adults, and retired seniors. For this graphic, working age adults (defined as 18-59) were compared to minors (age 0-17)(youth dependency ratio) and seniors (age 65+)(aged dependency ratio).

⁴ Medically Underserved Areas/Populations are areas or populations designated by HRSA as having too few primary care providers, high infant mortality, high poverty or a high elderly population.

⁵ Households Paying More Than 30% of Income to Housing Costs (Including Utilities) and Have an Income Below 50% of the Area Median Income (65+)

⁶ Wider Opportunities for Women Elder Economic Security Standard™ Index (Elder Index) measures how much income retired older adults require to meet their basic needs—without public or private assistance. The Elder Index measures basic expenses for elders age 65+ living in the community, not in institutions.

Annual expenses include: housing, including utilities, taxes, insurance; food; transportation; health care, based on good health; and miscellaneous. Data found at <http://www.basiceconomicsecurity.org/EI/>

⁷ With One Type of Disability: 65+ people who have only one type of disability

⁸ Probable Alzheimer's Cases = (65-74 Population x 0.034088) + (75-84 Population x 0.166265) + (85+ Population x 0.423518)

Alzheimer's by Age in 2015 Alzheimer's Disease Facts and Figures Report used to develop calculation can be found at: http://www.alz.org/documents_custom/facts_2015/alz_ff_florida.pdf?type=interior_map&facts=undefined&facts=facts

⁹ OSS Beds: Optional State Supplementation Beds. Optional State Supplementation (OSS) is a cash assistance program. Its purpose is to supplement a person's income to help pay for costs in an assisted living facility, mental health residential treatment facility, and adult family care home. It is NOT a Medicaid program.

¹⁰ ECC License: Extended Congregate Care License. The ECC license is a specialty license that enables a facility to provide, directly or through contract, services beyond those permissible under the standard license, including acts performed by licensed nurses, and supportive services defined by rule to persons who otherwise would be disqualified from continued residence in a facility licensed under this part.

¹¹ LMH License: Limited Mental Health License. Any facility intending to admit three or more mental health residents must apply for and obtain a limited mental health license from AHCA's Assisted Living Unit before accepting the third mental health resident.

¹² LNS License: Limited Nursing Services License. A Limited Nursing Services (LNS) license is a specialty license that enables a facility to provide a select number of nursing services.