

2015 Profile of Older Floridians

Hillsborough



Population by Age Category		
All Ages	1,325,563	100.0%
Under 18	313,447	23.6%
Under 60	1,080,504	81.5%
18-59	767,058	57.9%
60+	245,059	18.5%
65+	175,664	13.3%
70+	116,676	8.8%
75+	74,758	5.6%
80+	45,187	3.4%
85+	22,054	1.7%

Source: Office of Economic and Demographic Research, 2015

Population by Race and Ethnicity		
White	207,658	84.7%
Black	29,977	12.2%
Other Minorities	7,916	3.2%
Total Hispanic	43,801	17.9%
White	39,841	16.3%
Non-White	3,960	1.6%
Total Non-Hispanic	201,258	82.1%
Total Racial and Hispanic Minorities ²	77,242	31.5%

Source: Office of Economic and Demographic Research, 2015

Population by Gender		
Male	110,185	45.0%
Female	134,874	55.0%

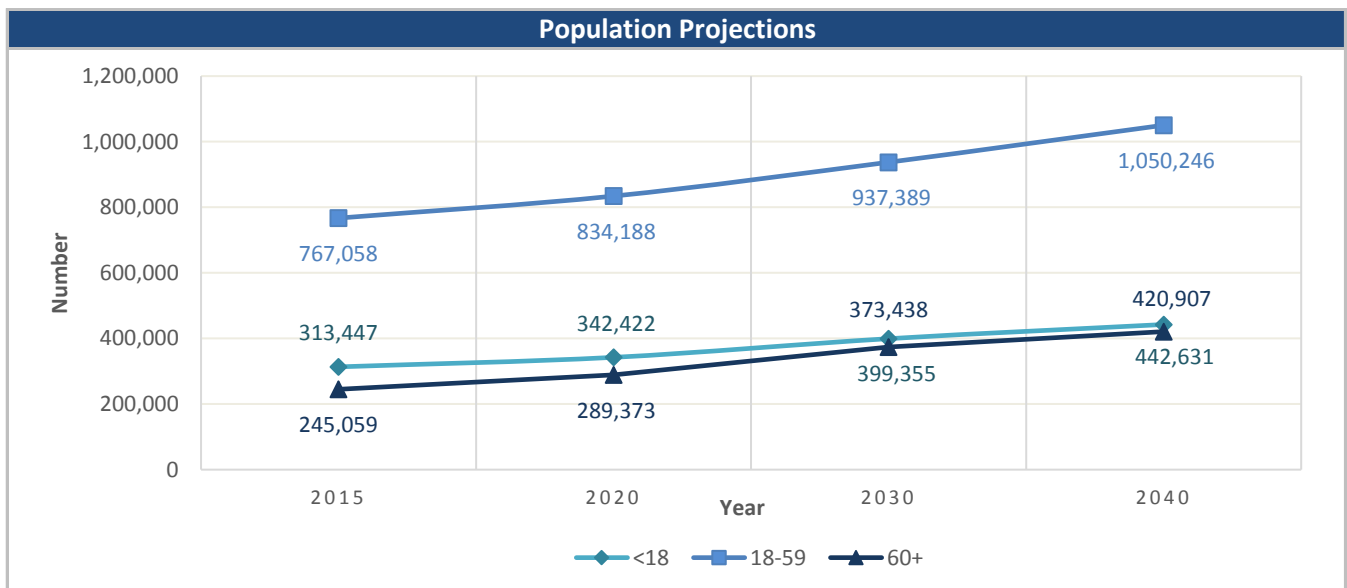
Source: Office of Economic and Demographic Research, 2015

English Proficiency	
With Limited English Proficiency ¹	18,090

Source: DOEA calculations based on EDR and 2009-13 ACS data

Financial Status		% 60+
Below Poverty Guideline	27,680	11.3%
Below 125% of Poverty Guideline	39,579	16.2%
Minority Below Poverty Guideline	15,150	6.2%
Minority Below 125% of Poverty Guideline	20,976	8.6%

Source: DOEA calculations based on EDR data and 2009-13 ACS data

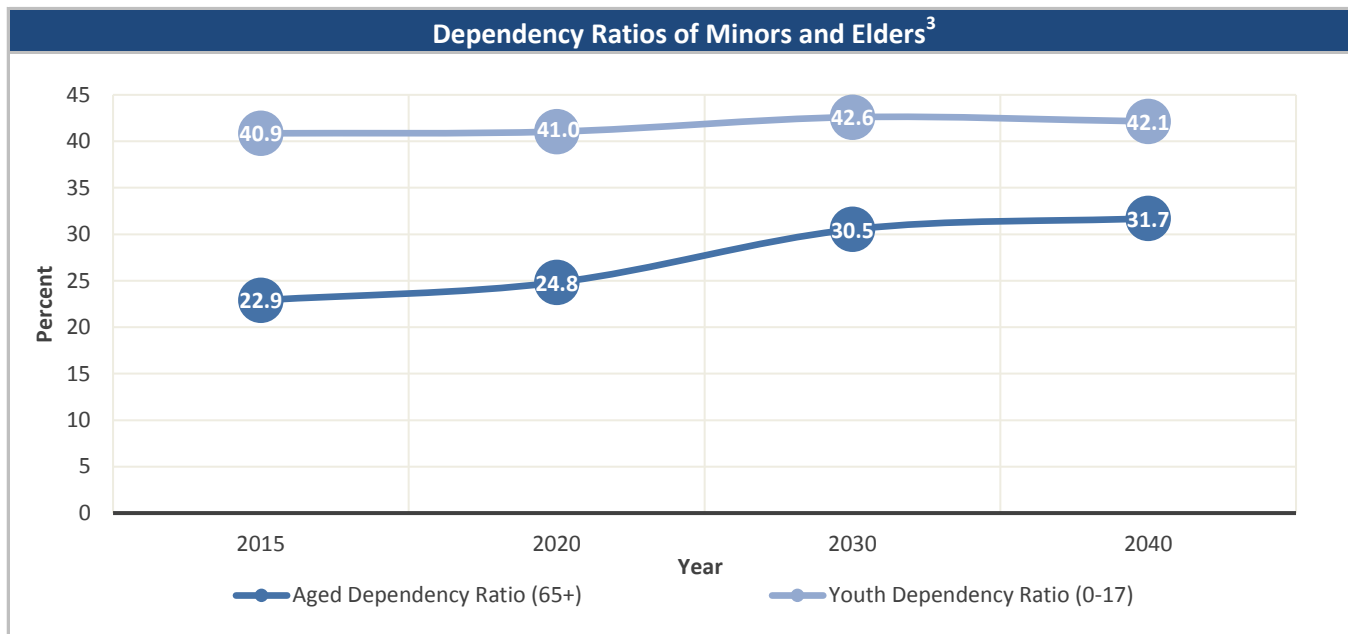


Source: Office of Economic and Demographic Research, 2015

Unless otherwise noted, the data presented in this *Profile* refers to elder populations in Florida age 60 and older.

2015 Profile of Older Floridians

Hillsborough



Source: Office of Economic and Demographic Research, 2015

Grandparents	
Living With Own Grandchildren*	15,829
Grandparent Responsible for Own Grandchildren*	4,508
Grandparent Not Responsible for Own Grandchildren*	11,316
Not Living With Own Grandchildren*	229,235

*Grandchildren Under Age 18

Source: DOEA calculations based on EDR and 2009-13 ACS data

SNAP or Food Stamps	
Participants	31,021
Potentially Eligible	39,579
Participation Rate	78.4%

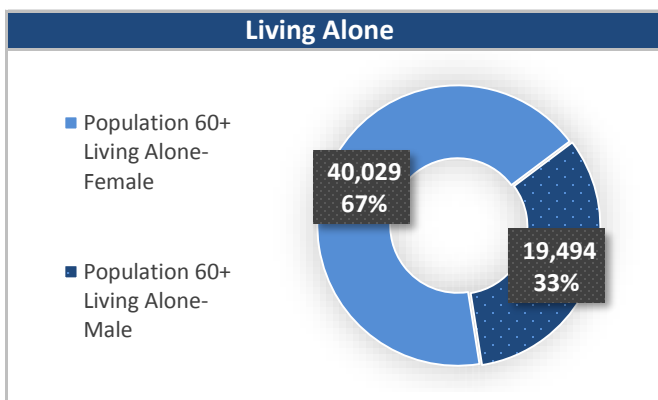
Source: Florida Department of Children and Families, 2015

Rural Designation	
Rural (Yes/No)	NO

Source: Rural Economic Development Initiative

Medically Underserved (65+)	
Total Medically Underserved ⁴	24,376
Living in Areas Defined as Having Medically Underserved Populations	22,879
Living in Medically Underserved Areas	1,497

Source: DOH and U.S. HHS, Data as of 6/13/2016



Source: DOEA calculations based on EDR data and 2009-13 ACS data

Unless otherwise noted, the data presented in this *Profile* refers to elder populations in Florida age 60 and older.

2015 Profile of Older Floridians

Hillsborough

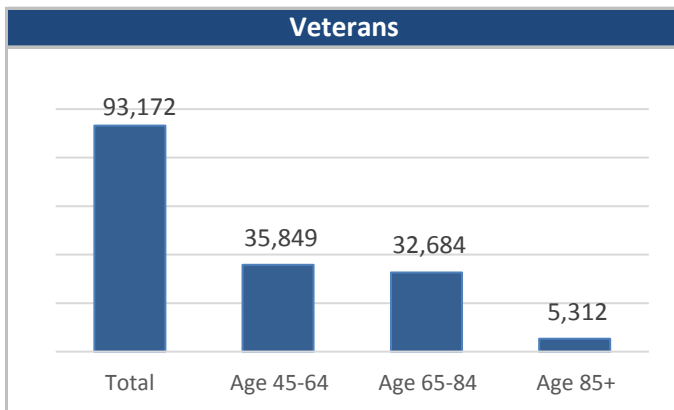


Florida Registered Voters	
Elder Voters	205,489
Percent of All Voters	25.9%

Source: FL Department of State, 2016

Florida Driver's License	
Elder Drivers	4,274
Percent of All Drivers	31.1%

Source: FL Department of Highway Safety & Motor Vehicles, 2015



Source: FL Department of Veterans' Affairs

Households With Cost Burden Above 30% and Income Below 50% Area Median Income (65+) ⁵	
Elder Households	111,001
Percent of All Households	20.4%

Source: The Shimberg Center for Housing Studies, 2015

Cost of Living, Annual Expenses ⁶	
Single Elders	
Owner without Mortgage	\$18,444
Renter, one bedroom	\$22,848
Owner with Mortgage	\$27,804
Elder Couple	
Owner without Mortgage	\$28,020
Renter, one bedroom	\$32,424
Owner with Mortgage	\$37,380

Source: Wider Opportunities for Women Elder Economic Security Standard™ Index (Elder Index), Data as of 5/11/2016

Retirement (65+)	
Disability Insurance (OASDI) Beneficiaries	115,163
Percent OASDI Beneficiaries	65.6%

Source: DOEA calculations based on EDR and the U.S. Social Security Administration data, 2015

Median Household Income for All Ages	
2010-2014	\$50,122

Source: U.S. Census Bureau, 2014

Disability Status	
With One Type of Disability ⁷	34,374
With Two or More Disabilities	43,568
Total With Any Disability	
Hearing	27,495
Vision	15,229
Cognitive	21,447
Ambulatory	52,641
Self-Care	19,572
Independent Living	32,955
With No Disabilities	167,117
Probably Alzheimer's Cases (65+) ⁸	21,543

Source: DOEA calculations based on EDR, 2009-13 ACS data, and Alzheimer's Disease Facts and Figures Report, 2015

Medical Professionals	
Medical Doctors	
Licensed	4,256
Limited License	2
Critical Need Area License	25
Restricted	0
Medical Faculty Certification	0
Public Health Certificate	0
Specialties	
Licensed Podiatric Physicians	71
Licensed Osteopathic Physicians	398
Licensed Chiropractic Physicians	304
Licensed Registered Nurses	16,866

Source: Florida Department of Health, 2015

Unless otherwise noted, the data presented in this *Profile* refers to elder populations in Florida age 60 and older.

2015 Profile of Older Floridians

Hillsborough



Skilled Nursing Facility (SNF) Utilization	
SNF Beds	3,932
Community Beds	3,742
Sheltered Beds	190
Veterans' Affairs Administration Beds	-
Other Beds	-
SNFs With Beds	33
Community Beds	30
Sheltered Beds	3
Veterans' Affairs Administration Beds	-
Other Beds	-
SNFs With Community Beds	30
Community Bed Days	1,365,830
Community Patient Days	1,181,543
Medicaid Patient Days	694,243
Occupancy Rate	86.5%
Percent Medicaid	58.8%

Assisted Living Facility	
Total Beds	6,083
OSS Beds ⁹	1,061
Non-OSS Beds	5,022
Total Facilities	228
Facilities with ECC License ¹⁰	18
Facilities with LMH License ¹¹	40
Facilities with LNS License ¹²	23

Adult Family Care Homes	
Homes	51
Beds	214

Ambulatory Surgical Centers	
Facilities	32
Operating Rooms	99
Recovery Beds	335

Home Health Agencies	
Agencies	151
Medicaid Certified Agencies	49
Medicare Certified Agencies	90

Hospitals	
Hospitals	16
Hospitals with Skilled Nursing Units	1
Hospital Beds	4,160
Skilled Nursing Unit Beds	201

Homemaker & Companion Service Companies	
Companies	112

Medicaid & Medicare Eligibility	
Medicaid Eligible - All Ages	346,276
60+ Medicaid Eligible	41,428
Dual Eligible - All Ages	52,470
60+ Dual Eligible	35,102

Adult Day Care	
Facilities	15
Capacity	836

Source for Page: AHCA, 2015

2015 Profile of Older Floridians

Hillsborough

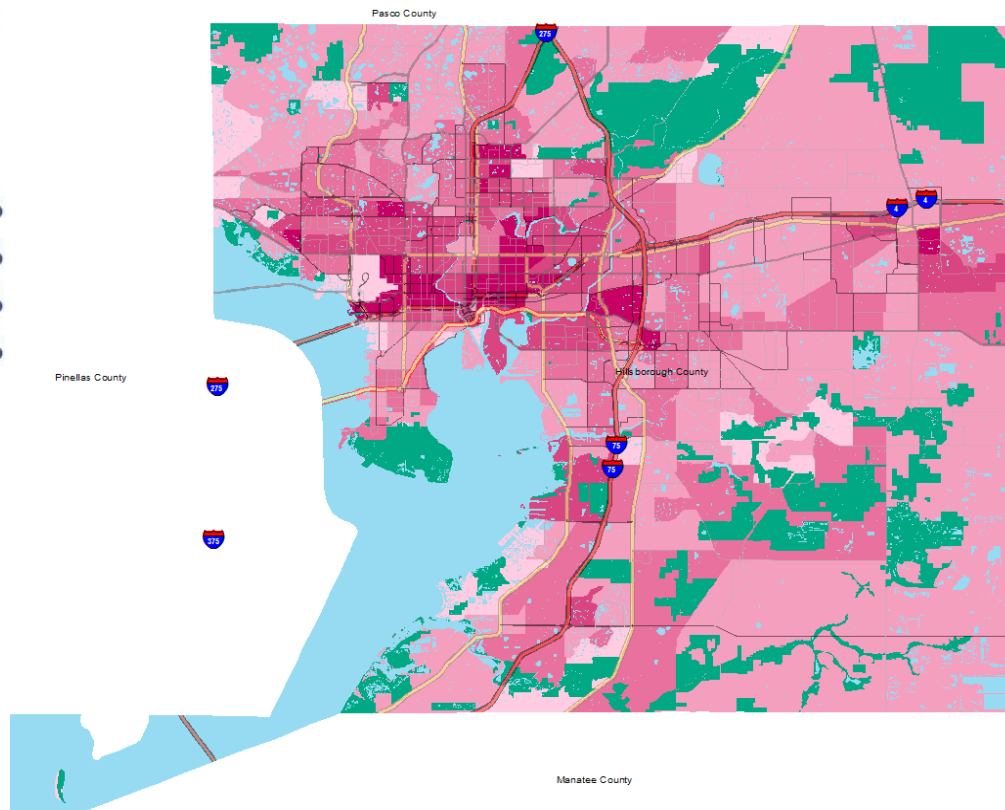


Elder Needs Index

Elder Needs Index (all factors)

ENI

	0.00% - 12.24%
	12.25% - 19.94%
	19.95% - 28.86%
	28.87% - 40.27%
	40.28% - 72.08%



The Elder Needs Index (ENI) is a composite measure that includes: (1) the percentage of the 60 and older population that is age 85 and older; (2) the percentage of the 55 and older population who are members of racial or ethnic minority groups; (3) the percentage of the 65 and older population with one or more disability; and (4) the percentage of the 55 and older population living below 125% of the Federal Poverty Level. The Index is an averaged score that indicates senior citizens' overall level of risk for a probable need of social services within a geographic area. It is not a percentage of the area's population. The green areas of the map represent current conservation land such as national parks, state forests, wildlife management areas, local and private preserves. The blue areas of the map represent current water features such as lakes, streams, rivers, and coastlines. Complete maps available at http://elderaffairs.state.fl.us/doea/eni_home.php

Source: Florida Department of Elder Affairs using U.S. Census Bureau, 2008-12 ACS data

Useful Websites

[Office of Economic & Demographic Research \(EDR\)](#)
[U.S. Census Bureau, American Community Survey](#)
[U.S. Census Bureau, Quick Facts](#)
[Agency for Health Care Administration \(AHCA\)](#)

[FL Division of Emergency Management \(Shelters\)](#)
[Florida Housing Data Clearinghouse](#)
[County Chronic Disease Profile](#)

Unless otherwise noted, the data presented in this *Profile* refers to elder populations in Florida age 60 and older.

2015 Profile of Older Floridians

Hillsborough



¹ Those who report speaking English "Not well" or "Not at all" are defined as having Limited English Proficiency (LEP) in this profile.

² Total Minorities = (60+ Population) - (White Non-Hispanic 60+)

³ A "dependency ratio" is commonly depicted as a ratio of workers to non-workers. Rather than using labor-force participation rates, which fluctuate, a stable dependency ratio can be estimated by using the number of individuals in the population who fall into age groups generally aligned with school-aged kids, working age adults, and retired seniors. For this graphic, working age adults (defined as 18-59) were compared to minors (age 0-17)(youth dependency ratio) and seniors (age 65+)(aged dependency ratio).

⁴ Medically Underserved Areas/Populations are areas or populations designated by HRSA as having too few primary care providers, high infant mortality, high poverty or a high elderly population.

⁵ Households Paying More Than 30% of Income to Housing Costs (Including Utilities) and Have an Income Below 50% of the Area Median Income (65+)

⁶ Wider Opportunities for Women Elder Economic Security Standard™ Index (Elder Index) measures how much income retired older adults require to meet their basic needs—without public or private assistance. The Elder Index measures basic expenses for elders age 65+ living in the community, not in institutions.

Annual expenses include: housing, including utilities, taxes, insurance; food; transportation; health care, based on good health; and miscellaneous. Data found at <http://www.basiceconomicsecurity.org/EI/>

⁷ With One Type of Disability: 65+ people who have only one type of disability

⁸ Probable Alzheimer's Cases = (65-74 Population x 0.034088) + (75-84 Population x 0.166265) +(85+ Population x 0.423518) Alzheimer's by Age in 2015 Alzheimer's Disease Facts and Figures Report used to develop calculation can be found at: http://www.alz.org/documents_custom/facts_2015/alz_ff_florida.pdf?type=interior_map&facts=undefined&facts=facts

⁹ OSS Beds: Optional State Supplementation Beds. Optional State Supplementation (OSS) is a cash assistance program. Its purpose is to supplement a person's income to help pay for costs in an assisted living facility, mental health residential treatment facility, and adult family care home. It is NOT a Medicaid program.

¹⁰ ECC License: Extended Congregate Care License. The ECC license is a specialty license that enables a facility to provide, directly or through contract, services beyond those permissible under the standard license, including acts performed by licensed nurses, and supportive services defined by rule to persons who otherwise would be disqualified from continued residence in a facility licensed under this part.

¹¹ LMH License: Limited Mental Health License. Any facility intending to admit three or more mental health residents must apply for and obtain a limited mental health license from AHCA's Assisted Living Unit before accepting the third mental health resident.

¹² LNS License: Limited Nursing Services License. A Limited Nursing Services (LNS) license is a specialty license that enables a facility to provide a select number of nursing services.