



2013 Florida County Profiles

Washington

| Population by Age Category | | |
|----------------------------|--------|--------|
| All Ages | 24,793 | 100.0% |
| Under 60 | 19,318 | 77.9% |
| 60+ | 5,475 | 22.1% |
| 65+ | 3,972 | 16.0% |
| 70+ | 2,616 | 10.6% |
| 75+ | 1,566 | 6.3% |
| 80+ | 880 | 3.5% |
| 85+ | 406 | 1.6% |

| Population by Race (60+) | | |
|--------------------------|-------|-------|
| White | 4,985 | 91.0% |
| Non-White | 579 | 10.6% |
| Black | 499 | 9.1% |
| Other Minorities | 80 | 1.5% |

| Population by Ethnicity (60+) | | |
|-------------------------------|-------|-------|
| Total Hispanic | 50 | 0.9% |
| White | 43 | 0.8% |
| Non-White | 7 | 0.1% |
| Total Non-Hispanic | 5,425 | 99.1% |
| Total Minorities ¹ | 533 | 9.7% |

| Population by Gender (60+) | | |
|----------------------------|-------|-------|
| Population 60+ | 5,475 | 22.1% |
| Male | 2,552 | 46.6% |
| Female | 2,923 | 53.4% |

| Financial Status (60+, % 60+) | | |
|--|-------|-------|
| Below Poverty Guideline | 633 | 11.6% |
| Below 125% of Poverty Guideline | 1,035 | 18.9% |
| Minorities Below Poverty Guideline | 100 | 1.8% |
| Minorities Below 125% of Poverty Guideline | 137 | 2.5% |

| Medically Underserved (65+) | | |
|---|-------|--|
| Total Medically Underserved | 3,376 | |
| Medically Underserved Populations - Living in Areas Defined as Having Medically Underserved Populations | 0 | |
| Medically Underserved Areas - Living in Medically Underserved Areas | 3,376 | |

| Living Situation (60+) | | |
|------------------------|-------|--|
| Living Alone | 1,605 | |
| Male | 573 | |
| Female | 1,032 | |

| Grandparents (60+) | |
|--|-------|
| Total 60+ Living With Own Grandchildren (Under Age 18) | 397 |
| Grandparent Responsible for Own Grandchildren (Under Age 18) | 143 |
| Grandparent Not Responsible for Own Grandchildren (Under Age 18) | 254 |
| 60+ Not Living With Own Grandchildren (Under Age 18) | 4,866 |

| Skilled Nursing Facility Utilization | |
|--------------------------------------|--------|
| SNF Beds | 180 |
| Community Beds | 180 |
| Sheltered Beds | 0 |
| Veterans Administration Beds | 0 |
| Other Beds | 0 |
| SNFs With Beds | 1 |
| Community Beds | 1 |
| Sheltered Beds | 0 |
| Veterans Administration Beds | 0 |
| Other Beds | 0 |
| SNFs With Community Beds | 1 |
| Community Bed Days | 65,700 |
| Community Patient Days | 55,980 |
| Medicaid Patient Days | 45,390 |
| Occupancy Rate | 85.2% |
| Percent Medicaid | 81.1% |

| Adult Day Care | |
|----------------|---|
| Facilities | 0 |
| Capacity | 0 |

| Adult Family Care Homes | |
|-------------------------|---|
| Homes | 0 |
| Beds | 0 |

| Home Health Agencies | |
|-----------------------------|---|
| Agencies | 2 |
| Medicaid Certified Agencies | 1 |
| Medicare Certified Agencies | 2 |

| Homemaker & Companion Service Companies | |
|---|---|
| Companies | 1 |

| Ambulatory Surgical Centers | |
|-----------------------------|---|
| Facilities | 0 |
| Operating Rooms | 0 |
| Recovery Beds | 0 |



2013 Florida County Profiles

Washington (Continued)

| Rural Designation | |
|-------------------|-----|
| Rural (Yes/No) | YES |

| Assisted Living Facilities | |
|--|-----|
| Total Beds | 125 |
| OSS Beds ² | 109 |
| Non-OSS Beds | 16 |
| Total Facilities | 6 |
| Facilities With ECC License ³ | 0 |
| Facilities With LMH License ⁴ | 5 |
| Facilities With LNS License ⁵ | 2 |

| Hospitals | |
|--------------------------------------|----|
| Hospitals | 1 |
| Hospitals With Skilled Nursing Units | 1 |
| Hospital Beds | 59 |
| Skilled Nursing Unit Beds | 34 |

| Medical Professionals | |
|----------------------------------|-----|
| Medical Doctors | |
| Licensed | 9 |
| Limited License | 0 |
| Critical Need Area License | 0 |
| Restricted | 0 |
| Medical Faculty Certificate | 0 |
| Public Health Certificate | 0 |
| Specialties | |
| Licensed Podiatric Physicians | 0 |
| Licensed Osteopathic Physicians | 0 |
| Licensed Chiropractic Physicians | 2 |
| Registered Nurses | |
| Licensed Registered Nurses | 199 |

| Driver's License | |
|--|--------|
| Drivers With Florida Driver's License - All Ages | 17,203 |
| Drivers With Florida Driver's License - Age 60+ | 5,111 |
| Percent of Drivers With Florida Driver's License - Age 60+ | 29.7% |

| Food Stamps (60+) | |
|-------------------------------------|-------|
| Participants (60+) | 390 |
| Potentially Eligible | 1,035 |
| Food Stamp Participation Rate (60+) | 37.7% |

| Registered Voters | |
|---|--------|
| Registered to Vote in Florida - All Ages | 14,418 |
| Registered to Vote in Florida - Age 60+ | 4,695 |
| Percent of Population Registered to Vote in Florida - Age 60+ | 32.6% |

| Households With Cost Burden Above 30% and Income Below 50% Area Median Income (65+) (2010) | |
|--|-------|
| Elder Households | 2,765 |
| Percent of All Households | 15.2% |

| Median Household Income (All Ages) | |
|------------------------------------|----------|
| 2008-2012 | \$38,536 |

| Medicaid & Medicare Eligibility | |
|---------------------------------|-------|
| Medicaid Eligible - All Ages | 5,611 |
| Medicaid Eligible - 60+ | 872 |
| Dual Eligible - All Ages | 1,294 |
| Dual Eligible - 60+ | 791 |

| Veterans | |
|-----------|-------|
| Total | 2,043 |
| Age 45-64 | 1,138 |
| Age 65-84 | 809 |
| Age 85+ | 96 |

| Disability Status (60+) | |
|--|-------|
| With One Type of Disability ⁶ | 943 |
| Hearing | 853 |
| Vision | 222 |
| Cognitive | 540 |
| Ambulatory | 1,361 |
| Self-Care | 487 |
| Independent Living | 858 |
| With Two or More Disabilities | 1,128 |
| With No Disabilities | 3,304 |
| Probable Alzheimer's Cases ⁷ | 411 |

| English Proficiency (60+) | |
|----------------------------------|----|
| With Limited English Proficiency | 69 |

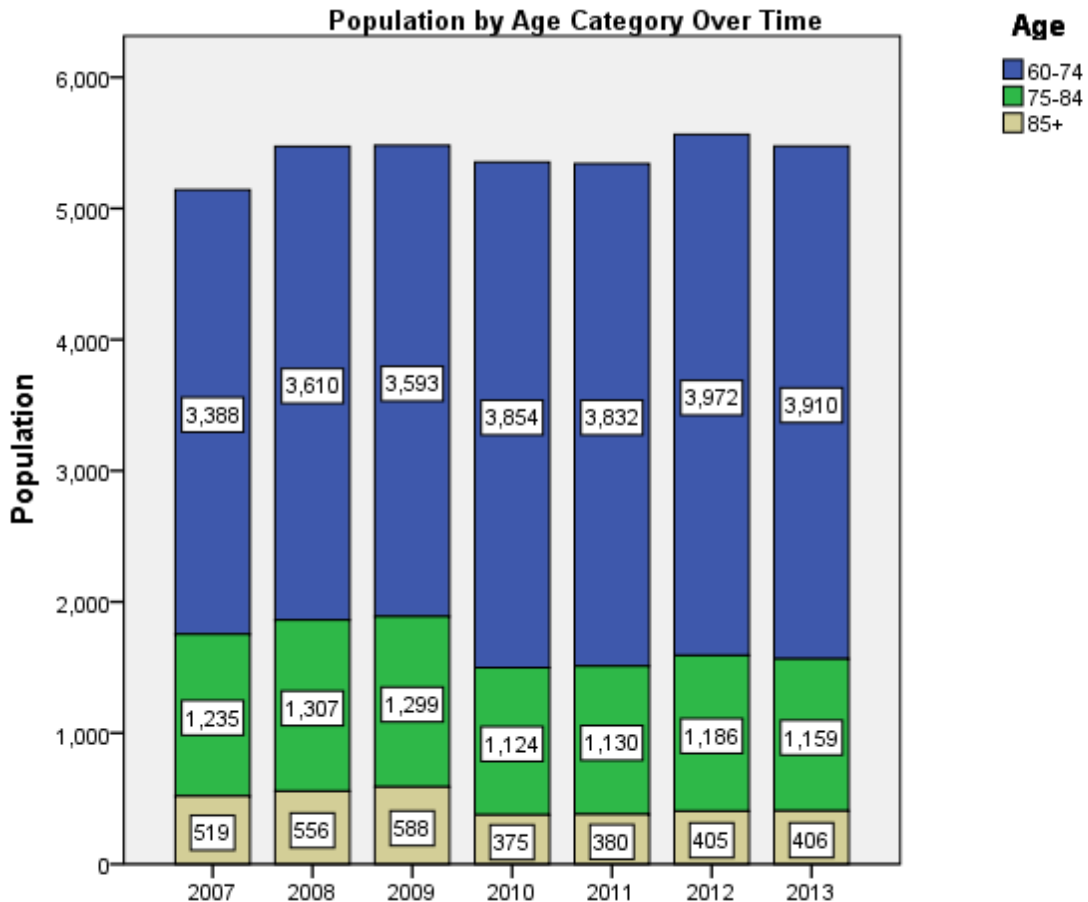
2013 Florida County Profiles

Washington (Continued)

| Cost of Living | |
|------------------------|------------------------------|
| | Annual Expenses ⁸ |
| Single Elders | |
| Owner without Mortgage | \$19,008 |
| Renter, one bedroom | \$21,000 |
| Owner with Mortgage | \$27,504 |
| Elder Couple | |
| Owner without Mortgage | \$31,440 |
| Renter, one bedroom | \$33,432 |
| Owner with Mortgage | \$39,936 |

Note: Wider Opportunities for Women Elder Economic Security Standard™ Index (Elder Index) measures how much income retired older adults require to meet their basic needs—without public or private assistance. The Elder Index measures basic expenses for elders age 65+ living in the community, not in institutions.

| Useful Websites |
|---|
| County Chronic Disease Profile (Washington) |
| Florida Housing Data Clearinghouse (Washington) |
| Behavioral Risk Factors (BRFSS) (Washington) |





2013 Florida County Profiles

¹ Total Minorities = (60+ Population) – (White Non-Hispanic 60+)

² OSS beds: Optional State Supplementation beds

³ ECC License: Extended Congregate Care License

⁴ LMH License: Limited Mental Health License

⁵ LNS License: Limited Nursing Services License

⁶ With One Type of Disability: 60+ people who have only one type of disability

⁷ Probable Alzheimer's Cases = (65-74 Population x 0.0136) + (75-84 Population x 0.1822) + (85+ Population x 0.4098)

⁸ Annual expenses include: housing, including utilities, taxes, insurance; food; transportation; health care, based on good health; and miscellaneous.

Sources

- Population: Florida Population by County, Age, Race, Ethnicity and Gender provided by Florida Legislature, Office of Economic and Demographic Research
- Financial Status & Living Situation: Department of Elder Affairs calculations based on Florida Population data and 2007-2011 American Community Survey
- Medically Underserved Population (Data as of 7/18/2014): Florida Department of Health and U.S. Department of Health and Human Services
- Grandparents: Department of Elder Affairs calculations based on Florida Population data and 2007-2011 American Community Survey, Special Tabulation on Aging
- Skilled Nursing Facility Utilization, Adult Day Care, Adult Family Care Home, Ambulatory Surgical Centers, Assisted Living Facilities, Home Health Agencies, Homemakers & Companion Service Companies, Hospitals: Florida Agency for Health Care Administration
- Rural Designation: Based on the definition of Rural Designation by Rural Economic Development Initiative
- Medical Professionals: Florida Department of Health
- Driver's License: Florida Department of Highway Safety & Motor Vehicles
- Food Stamps: Florida Department of Children and Families
- Registered Voters (Data as of 1/31/2014) : Florida Department of State
- Households with Cost Burden Above 30% and income below 50% Area Median Income: The Shimberg Center for Housing Studies
- Median Household Incomes: U.S. Census Bureau: State and County QuickFacts
- Medicaid & Medicare Eligibility and Medicaid Eligibility: Florida Agency for Health Care Administration
- Veterans Demographics: Florida Department of Veterans' Affairs
- Disability Status: Department of Elder Affairs calculations based on Florida Population data and 2009-2011 American Community Survey Data
- Probable Alzheimer's Cases: Department of Elder Affairs calculations based on Florida Population data and Alzheimer's by Age in 2011 Alzheimer's Disease Facts and Figures report at http://www.alz.org/documents_custom/Facts_2011/ALZ_FL.pdf?type=interior_map&facts=undefined&facts=facts
- English Proficiency: Department of Elder Affairs calculations based on Florida Population data and 2007-2011 American Community Survey, Special Tabulation on Aging
- Cost of Living (Data as of 7/18/2014): Wider Opportunities for Women Elder Economic Security Standard™ Index (Elder Index) at <http://www.basiceconomicsecurity.org/EI/>