



2013 Florida County Profiles

Walton

Population by Age Category		
All Ages	57,779	100.0%
Under 60	44,000	76.2%
60+	13,779	23.8%
65+	9,756	16.9%
70+	6,313	10.9%
75+	3,794	6.6%
80+	2,113	3.7%
85+	953	1.6%

Population by Race (60+)		
White	13,214	95.9%
Non-White	700	5.1%
Black	472	3.4%
Other Minorities	228	1.7%

Population by Ethnicity (60+)		
Total Hispanic	216	1.6%
White	197	1.4%
Non-White	19	0.1%
Total Non-Hispanic	13,563	98.4%
Total Minorities ¹	762	5.5%

Population by Gender (60+)		
Population 60+	13,779	23.8%
Male	6,480	47.0%
Female	7,299	53.0%

Financial Status (60+, % 60+)		
Below Poverty Guideline	1,171	8.5%
Below 125% of Poverty Guideline	1,891	13.7%
Minorities Below Poverty Guideline	160	1.2%
Minorities Below 125% of Poverty Guideline	189	1.4%

Medically Underserved (65+)		
Total Medically Underserved	2,783	
Medically Underserved Populations - Living in Areas Defined as Having Medically Underserved Populations	2,783	
Medically Underserved Areas - Living in Medically Underserved Areas	0	

Living Situation (60+)		
Living Alone	3,150	
Male	1,040	
Female	2,110	

Grandparents (60+)	
Total 60+ Living With Own Grandchildren (Under Age 18)	573
Grandparent Responsible for Own Grandchildren (Under Age 18)	213
Grandparent Not Responsible for Own Grandchildren (Under Age 18)	359
60+ Not Living With Own Grandchildren (Under Age 18)	12,802

Skilled Nursing Facility Utilization	
SNF Beds	277
Community Beds	277
Sheltered Beds	0
Veterans Administration Beds	0
Other Beds	0
SNFs With Beds	2
Community Beds	2
Sheltered Beds	0
Veterans Administration Beds	0
Other Beds	0
SNFs With Community Beds	2
Community Bed Days	101,105
Community Patient Days	74,283
Medicaid Patient Days	43,087
Occupancy Rate	73.5%
Percent Medicaid	58.0%

Adult Day Care	
Facilities	2
Capacity	35

Adult Family Care Homes	
Homes	0
Beds	0

Home Health Agencies	
Agencies	2
Medicaid Certified Agencies	0
Medicare Certified Agencies	1

Homemaker & Companion Service Companies	
Companies	1

Ambulatory Surgical Centers	
Facilities	0
Operating Rooms	0
Recovery Beds	0



2013 Florida County Profiles

Walton (Continued)

Rural Designation	
Rural (Yes/No)	YES

Assisted Living Facilities	
Total Beds	210
OSS Beds ²	20
Non-OSS Beds	190
Total Facilities	4
Facilities With ECC License ³	1
Facilities With LMH License ⁴	1
Facilities With LNS License ⁵	3

Hospitals	
Hospitals	2
Hospitals With Skilled Nursing Units	0
Hospital Beds	108
Skilled Nursing Unit Beds	0

Medical Professionals	
Medical Doctors	
Licensed	76
Limited License	0
Critical Need Area License	0
Restricted	0
Medical Faculty Certificate	0
Public Health Certificate	0
Specialties	
Licensed Podiatric Physicians	3
Licensed Osteopathic Physicians	14
Licensed Chiropractic Physicians	9
Registered Nurses	
Licensed Registered Nurses	479

Driver's License	
Drivers With Florida Driver's License - All Ages	49,029
Drivers With Florida Driver's License - Age 60+	14,505
Percent of Drivers With Florida Driver's License - Age 60+	29.6%

Food Stamps (60+)	
Participants (60+)	648
Potentially Eligible	1,891
Food Stamp Participation Rate (60+)	34.3%

Registered Voters	
Registered to Vote in Florida - All Ages	40,506
Registered to Vote in Florida - Age 60+	13,974
Percent of Population Registered to Vote in Florida - Age 60+	34.5%

Households With Cost Burden Above 30% and Income Below 50% Area Median Income (65+) (2010)	
Elder Households	7,519
Percent of All Households	13.3%

Median Household Income (All Ages)	
2008-2012	\$44,254

Medicaid & Medicare Eligibility	
Medicaid Eligible - All Ages	8,740
Medicaid Eligible - 60+	954
Dual Eligible - All Ages	1,450
Dual Eligible - 60+	846

Veterans	
Total	5,062
Age 45-64	2,514
Age 65-84	2,212
Age 85+	336

Disability Status (60+)	
With One Type of Disability ⁶	1,954
Hearing	1,746
Vision	943
Cognitive	1,218
Ambulatory	2,892
Self-Care	1,218
Independent Living	2,106
With Two or More Disabilities	2,549
With No Disabilities	9,585
Probable Alzheimer's Cases ⁷	989

English Proficiency (60+)	
With Limited English Proficiency	62

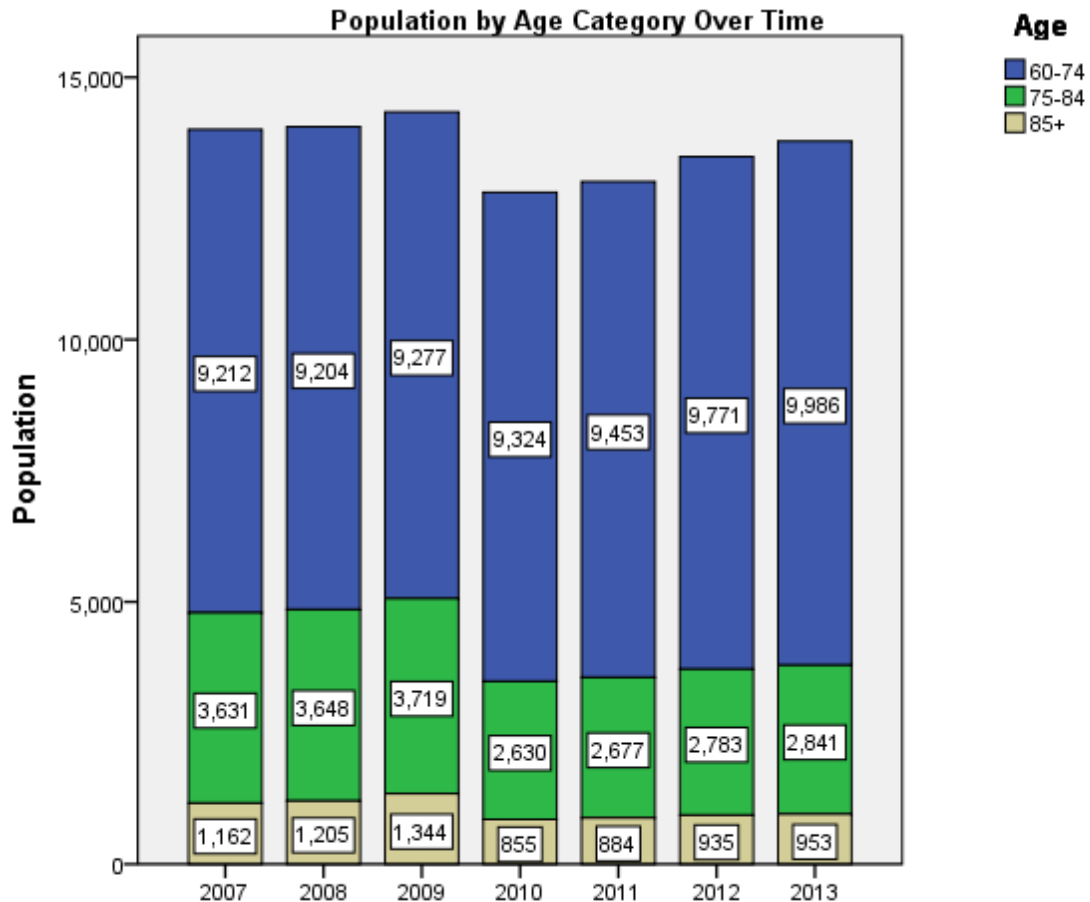
2013 Florida County Profiles

Walton (Continued)

Cost of Living	
	Annual Expenses ⁸
Single Elders	
Owner without Mortgage	\$19,008
Renter, one bedroom	\$23,100
Owner with Mortgage	\$27,504
Elder Couple	
Owner without Mortgage	\$31,440
Renter, one bedroom	\$35,532
Owner with Mortgage	\$39,936

Note: Wider Opportunities for Women Elder Economic Security Standard™ Index (Elder Index) measures how much income retired older adults require to meet their basic needs—without public or private assistance. The Elder Index measures basic expenses for elders age 65+ living in the community, not in institutions.

Useful Websites
County Chronic Disease Profile (Walton)
Florida Housing Data Clearinghouse (Walton)
Behavioral Risk Factors (BRFSS) (Walton)





2013 Florida County Profiles

¹ Total Minorities = (60+ Population) – (White Non-Hispanic 60+)

² OSS beds: Optional State Supplementation beds

³ ECC License: Extended Congregate Care License

⁴ LMH License: Limited Mental Health License

⁵ LNS License: Limited Nursing Services License

⁶ With One Type of Disability: 60+ people who have only one type of disability

⁷ Probable Alzheimer's Cases = (65-74 Population x 0.0136) + (75-84 Population x 0.1822) + (85+ Population x 0.4098)

⁸ Annual expenses include: housing, including utilities, taxes, insurance; food; transportation; health care, based on good health; and miscellaneous.

Sources

- Population: Florida Population by County, Age, Race, Ethnicity and Gender provided by Florida Legislature, Office of Economic and Demographic Research
- Financial Status & Living Situation: Department of Elder Affairs calculations based on Florida Population data and 2007-2011 American Community Survey
- Medically Underserved Population (Data as of 7/18/2014): Florida Department of Health and U.S. Department of Health and Human Services
- Grandparents: Department of Elder Affairs calculations based on Florida Population data and 2007-2011 American Community Survey, Special Tabulation on Aging
- Skilled Nursing Facility Utilization, Adult Day Care, Adult Family Care Home, Ambulatory Surgical Centers, Assisted Living Facilities, Home Health Agencies, Homemakers & Companion Service Companies, Hospitals: Florida Agency for Health Care Administration
- Rural Designation: Based on the definition of Rural Designation by Rural Economic Development Initiative
- Medical Professionals: Florida Department of Health
- Driver's License: Florida Department of Highway Safety & Motor Vehicles
- Food Stamps: Florida Department of Children and Families
- Registered Voters (Data as of 1/31/2014) : Florida Department of State
- Households with Cost Burden Above 30% and income below 50% Area Median Income: The Shimberg Center for Housing Studies
- Median Household Incomes: U.S. Census Bureau: State and County QuickFacts
- Medicaid & Medicare Eligibility and Medicaid Eligibility: Florida Agency for Health Care Administration
- Veterans Demographics: Florida Department of Veterans' Affairs
- Disability Status: Department of Elder Affairs calculations based on Florida Population data and 2009-2011 American Community Survey Data
- Probable Alzheimer's Cases: Department of Elder Affairs calculations based on Florida Population data and Alzheimer's by Age in 2011 Alzheimer's Disease Facts and Figures report at http://www.alz.org/documents_custom/Facts_2011/ALZ_FL.pdf?type=interior_map&facts=undefined&facts=facts
- English Proficiency: Department of Elder Affairs calculations based on Florida Population data and 2007-2011 American Community Survey, Special Tabulation on Aging
- Cost of Living (Data as of 7/18/2014): Wider Opportunities for Women Elder Economic Security Standard™ Index (Elder Index) at <http://www.basiceconomicsecurity.org/EI/>