



2013 Florida County Profiles

Wakulla

Population by Age Category		
All Ages	30,869	100.0%
Under 60	25,324	82.0%
60+	5,545	18.0%
65+	3,730	12.1%
70+	2,300	7.5%
75+	1,338	4.3%
80+	713	2.3%
85+	294	1.0%

Population by Race (60+)		
White	5,013	90.4%
Non-White	547	9.9%
Black	480	8.7%
Other Minorities	67	1.2%

Population by Ethnicity (60+)		
Total Hispanic	59	1.1%
White	53	1.0%
Non-White	6	0.1%
Total Non-Hispanic	5,486	98.9%
Total Minorities ¹	585	10.6%

Population by Gender (60+)		
Population 60+	5,545	18.0%
Male	2,753	49.7%
Female	2,792	50.3%

Financial Status (60+, % 60+)		
Below Poverty Guideline	594	10.7%
Below 125% of Poverty Guideline	831	15.0%
Minorities Below Poverty Guideline	114	2.0%
Minorities Below 125% of Poverty Guideline	161	2.9%

Medically Underserved (65+)		
Total Medically Underserved	3,893	
Medically Underserved Populations - Living in Areas Defined as Having Medically Underserved Populations	0	
Medically Underserved Areas - Living in Medically Underserved Areas	3,893	

Living Situation (60+)		
Living Alone	1,286	
Male	415	
Female	871	

Grandparents (60+)	
Total 60+ Living With Own Grandchildren (Under Age 18)	254
Grandparent Responsible for Own Grandchildren (Under Age 18)	17
Grandparent Not Responsible for Own Grandchildren (Under Age 18)	232
60+ Not Living With Own Grandchildren (Under Age 18)	5,126

Skilled Nursing Facility Utilization	
SNF Beds	120
Community Beds	120
Sheltered Beds	0
Veterans Administration Beds	0
Other Beds	0
SNFs With Beds	1
Community Beds	1
Sheltered Beds	0
Veterans Administration Beds	0
Other Beds	0
SNFs With Community Beds	1
Community Bed Days	43,800
Community Patient Days	38,436
Medicaid Patient Days	25,162
Occupancy Rate	87.8%
Percent Medicaid	65.5%

Adult Day Care	
Facilities	0
Capacity	0

Adult Family Care Homes	
Homes	0
Beds	0

Home Health Agencies	
Agencies	1
Medicaid Certified Agencies	0
Medicare Certified Agencies	1

Homemaker & Companion Service Companies	
Companies	1

Ambulatory Surgical Centers	
Facilities	0
Operating Rooms	0
Recovery Beds	0



2013 Florida County Profiles

Wakulla (Continued)

Rural Designation	
Rural (Yes/No)	YES

Assisted Living Facilities	
Total Beds	0
OSS Beds ²	0
Non-OSS Beds	0
Total Facilities	0
Facilities With ECC License ³	0
Facilities With LMH License ⁴	0
Facilities With LNS License ⁵	0

Hospitals	
Hospitals	0
Hospitals With Skilled Nursing Units	0
Hospital Beds	0
Skilled Nursing Unit Beds	0

Medical Professionals	
Medical Doctors	
Licensed	16
Limited License	0
Critical Need Area License	0
Restricted	0
Medical Faculty Certificate	0
Public Health Certificate	0
Specialties	
Licensed Podiatric Physicians	0
Licensed Osteopathic Physicians	3
Licensed Chiropractic Physicians	4
Registered Nurses	
Licensed Registered Nurses	249

Driver's License	
Drivers With Florida Driver's License - All Ages	22,370
Drivers With Florida Driver's License - Age 60+	5,802
Percent of Drivers With Florida Driver's License - Age 60+	25.9%

Food Stamps (60+)	
Participants (60+)	305
Potentially Eligible	831
Food Stamp Participation Rate (60+)	36.7%

Registered Voters	
Registered to Vote in Florida - All Ages	18,342
Registered to Vote in Florida - Age 60+	5,232
Percent of Population Registered to Vote in Florida - Age 60+	28.5%

Households With Cost Burden Above 30% and Income Below 50% Area Median Income (65+) (2010)	
Elder Households	3,500
Percent of All Households	14.2%

Median Household Income (All Ages)	
2008-2012	\$53,385

Medicaid & Medicare Eligibility	
Medicaid Eligible - All Ages	4,352
Medicaid Eligible - 60+	493
Dual Eligible - All Ages	693
Dual Eligible - 60+	433

Veterans	
Total	2,647
Age 45-64	1,556
Age 65-84	971
Age 85+	120

Disability Status (60+)	
With One Type of Disability ⁶	519
Hearing	993
Vision	370
Cognitive	519
Ambulatory	1,148
Self-Care	546
Independent Living	1,065
With Two or More Disabilities	1,313
With No Disabilities	3,647
Probable Alzheimer's Cases ⁷	343

English Proficiency (60+)	
With Limited English Proficiency	17

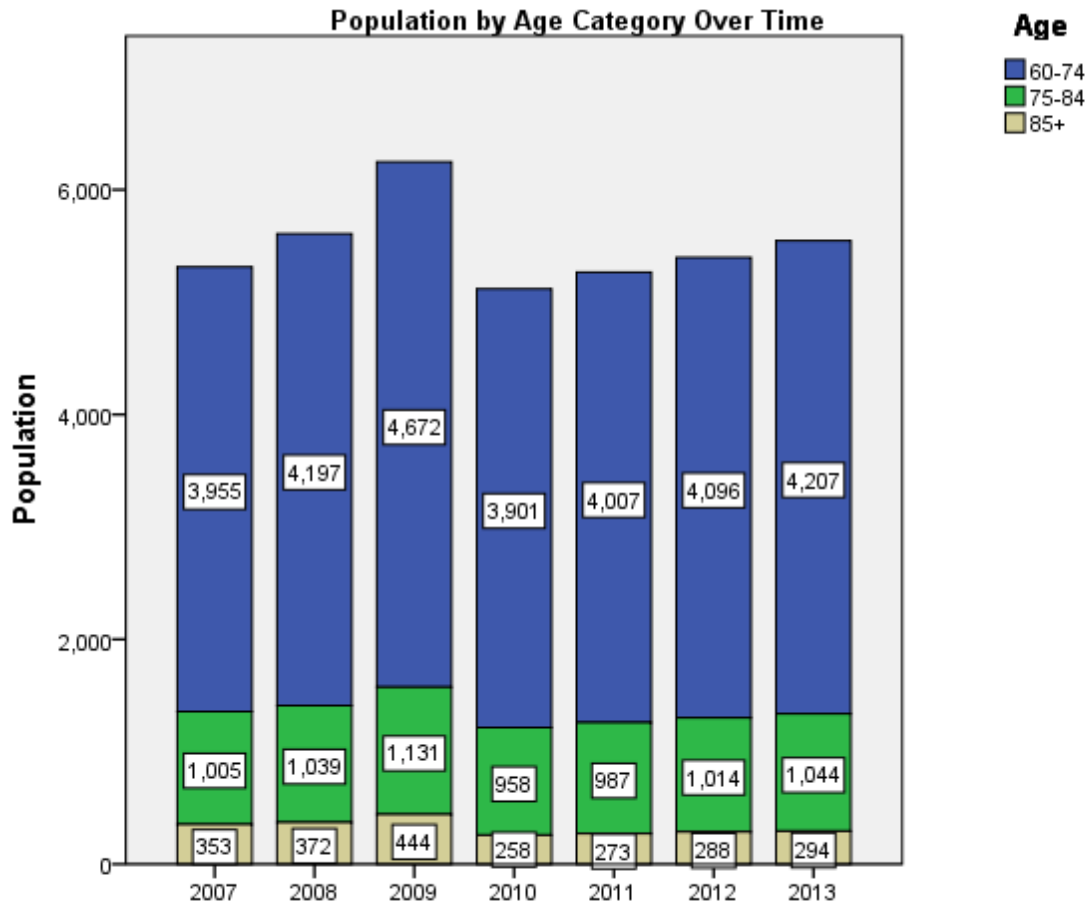
2013 Florida County Profiles

Wakulla (Continued)

Cost of Living	
	Annual Expenses ⁸
Single Elders	
Owner without Mortgage	\$17,364
Renter, one bedroom	\$21,984
Owner with Mortgage	\$25,932
Elder Couple	
Owner without Mortgage	\$27,696
Renter, one bedroom	\$32,316
Owner with Mortgage	\$36,264

Note: Wider Opportunities for Women Elder Economic Security Standard™ Index (Elder Index) measures how much income retired older adults require to meet their basic needs—without public or private assistance. The Elder Index measures basic expenses for elders age 65+ living in the community, not in institutions.

Useful Websites
County Chronic Disease Profile (Wakulla)
Florida Housing Data Clearinghouse (Wakulla)
Behavioral Risk Factors (BRFSS) (Wakulla)





2013 Florida County Profiles

¹ Total Minorities = (60+ Population) – (White Non-Hispanic 60+)

² OSS beds: Optional State Supplementation beds

³ ECC License: Extended Congregate Care License

⁴ LMH License: Limited Mental Health License

⁵ LNS License: Limited Nursing Services License

⁶ With One Type of Disability: 60+ people who have only one type of disability

⁷ Probable Alzheimer's Cases = (65-74 Population x 0.0136) + (75-84 Population x 0.1822) + (85+ Population x 0.4098)

⁸ Annual expenses include: housing, including utilities, taxes, insurance; food; transportation; health care, based on good health; and miscellaneous.

Sources

- Population: Florida Population by County, Age, Race, Ethnicity and Gender provided by Florida Legislature, Office of Economic and Demographic Research
- Financial Status & Living Situation: Department of Elder Affairs calculations based on Florida Population data and 2007-2011 American Community Survey
- Medically Underserved Population (Data as of 7/18/2014): Florida Department of Health and U.S. Department of Health and Human Services
- Grandparents: Department of Elder Affairs calculations based on Florida Population data and 2007-2011 American Community Survey, Special Tabulation on Aging
- Skilled Nursing Facility Utilization, Adult Day Care, Adult Family Care Home, Ambulatory Surgical Centers, Assisted Living Facilities, Home Health Agencies, Homemakers & Companion Service Companies, Hospitals: Florida Agency for Health Care Administration
- Rural Designation: Based on the definition of Rural Designation by Rural Economic Development Initiative
- Medical Professionals: Florida Department of Health
- Driver's License: Florida Department of Highway Safety & Motor Vehicles
- Food Stamps: Florida Department of Children and Families
- Registered Voters (Data as of 1/31/2014) : Florida Department of State
- Households with Cost Burden Above 30% and income below 50% Area Median Income: The Shimberg Center for Housing Studies
- Median Household Incomes: U.S. Census Bureau: State and County QuickFacts
- Medicaid & Medicare Eligibility and Medicaid Eligibility: Florida Agency for Health Care Administration
- Veterans Demographics: Florida Department of Veterans' Affairs
- Disability Status: Department of Elder Affairs calculations based on Florida Population data and 2009-2011 American Community Survey Data
- Probable Alzheimer's Cases: Department of Elder Affairs calculations based on Florida Population data and Alzheimer's by Age in 2011 Alzheimer's Disease Facts and Figures report at http://www.alz.org/documents_custom/Facts_2011/ALZ_FL.pdf?type=interior_map&facts=undefined&facts=facts
- English Proficiency: Department of Elder Affairs calculations based on Florida Population data and 2007-2011 American Community Survey, Special Tabulation on Aging
- Cost of Living (Data as of 7/18/2014): Wider Opportunities for Women Elder Economic Security Standard™ Index (Elder Index) at <http://www.basiceconomicsecurity.org/EI/>