



2013 Florida County Profiles

Volusia

| Population by Age Category | | |
|----------------------------|---------|--------|
| All Ages | 498,978 | 100.0% |
| Under 60 | 352,913 | 70.7% |
| 60+ | 146,065 | 29.3% |
| 65+ | 109,423 | 21.9% |
| 70+ | 76,997 | 15.4% |
| 75+ | 51,546 | 10.3% |
| 80+ | 32,101 | 6.4% |
| 85+ | 15,780 | 3.2% |

| Population by Race (60+) | | |
|--------------------------|---------|-------|
| White | 136,113 | 93.2% |
| Non-White | 10,123 | 6.9% |
| Black | 8,312 | 5.7% |
| Other Minorities | 1,811 | 1.2% |

| Population by Ethnicity (60+) | | |
|-------------------------------|---------|-------|
| Total Hispanic | 8,244 | 5.6% |
| White | 7,456 | 5.1% |
| Non-White | 788 | 0.5% |
| Total Non-Hispanic | 137,821 | 94.4% |
| Total Minorities ¹ | 17,408 | 11.9% |

| Population by Gender (60+) | | |
|----------------------------|---------|-------|
| Population 60+ | 146,065 | 29.3% |
| Male | 66,481 | 45.5% |
| Female | 79,584 | 54.5% |

| Financial Status (60+, % 60+) | | |
|--|--------|-------|
| Below Poverty Guideline | 12,954 | 8.9% |
| Below 125% of Poverty Guideline | 20,414 | 14.0% |
| Minorities Below Poverty Guideline | 2,935 | 2.0% |
| Minorities Below 125% of Poverty Guideline | 4,302 | 2.9% |

| Medically Underserved (65+) | |
|---|--------|
| Total Medically Underserved | 37,679 |
| Medically Underserved Populations - Living in Areas Defined as Having Medically Underserved Populations | 37,679 |
| Medically Underserved Areas - Living in Medically Underserved Areas | 0 |

| Living Situation (60+) | |
|------------------------|--------|
| Living Alone | 35,765 |
| Male | 10,958 |
| Female | 24,807 |

| Grandparents (60+) | |
|--|---------|
| Total 60+ Living With Own Grandchildren (Under Age 18) | 4,991 |
| Grandparent Responsible for Own Grandchildren (Under Age 18) | 1,981 |
| Grandparent Not Responsible for Own Grandchildren (Under Age 18) | 3,009 |
| 60+ Not Living With Own Grandchildren (Under Age 18) | 137,481 |

| Skilled Nursing Facility Utilization | |
|--------------------------------------|-----------|
| SNF Beds | 3,427 |
| Community Beds | 3,202 |
| Sheltered Beds | 105 |
| Veterans Administration Beds | 120 |
| Other Beds | 0 |
| SNFs With Beds | 33 |
| Community Beds | 29 |
| Sheltered Beds | 3 |
| Veterans Administration Beds | 1 |
| Other Beds | 0 |
| SNFs With Community Beds | 29 |
| Community Bed Days | 1,168,730 |
| Community Patient Days | 975,398 |
| Medicaid Patient Days | 620,413 |
| Occupancy Rate | 83.5% |
| Percent Medicaid | 63.6% |

| Adult Day Care | |
|----------------|-----|
| Facilities | 3 |
| Capacity | 150 |

| Adult Family Care Homes | |
|-------------------------|----|
| Homes | 14 |
| Beds | 60 |

| Home Health Agencies | |
|-----------------------------|----|
| Agencies | 37 |
| Medicaid Certified Agencies | 7 |
| Medicare Certified Agencies | 23 |

| Homemaker & Companion Service Companies | |
|---|----|
| Companies | 22 |

| Ambulatory Surgical Centers | |
|-----------------------------|----|
| Facilities | 12 |
| Operating Rooms | 26 |
| Recovery Beds | 80 |

2013 Florida County Profiles

Volusia (Continued)

| Rural Designation | |
|-------------------|----|
| Rural (Yes/No) | NO |

| Assisted Living Facilities | |
|--|-------|
| Total Beds | 2,187 |
| OSS Beds ² | 414 |
| Non-OSS Beds | 1,773 |
| Total Facilities | 82 |
| Facilities With ECC License ³ | 5 |
| Facilities With LMH License ⁴ | 13 |
| Facilities With LNS License ⁵ | 17 |

| Hospitals | |
|--------------------------------------|-------|
| Hospitals | 8 |
| Hospitals With Skilled Nursing Units | 0 |
| Hospital Beds | 1,439 |
| Skilled Nursing Unit Beds | 0 |

| Medical Professionals | |
|----------------------------------|-------|
| Medical Doctors | |
| Licensed | 977 |
| Limited License | 0 |
| Critical Need Area License | 1 |
| Restricted | 0 |
| Medical Faculty Certificate | 0 |
| Public Health Certificate | 0 |
| Specialties | |
| Licensed Podiatric Physicians | 31 |
| Licensed Osteopathic Physicians | 99 |
| Licensed Chiropractic Physicians | 226 |
| Registered Nurses | |
| Licensed Registered Nurses | 6,710 |

| Driver's License | |
|--|---------|
| Drivers With Florida Driver's License - All Ages | 402,025 |
| Drivers With Florida Driver's License - Age 60+ | 136,752 |
| Percent of Drivers With Florida Driver's License - Age 60+ | 34.0% |

| Food Stamps (60+) | |
|-------------------------------------|--------|
| Participants (60+) | 8,199 |
| Potentially Eligible | 20,414 |
| Food Stamp Participation Rate (60+) | 40.2% |

| Registered Voters | |
|---|---------|
| Registered to Vote in Florida - All Ages | 323,579 |
| Registered to Vote in Florida - Age 60+ | 125,066 |
| Percent of Population Registered to Vote in Florida - Age 60+ | 38.7% |

| Households With Cost Burden Above 30% and Income Below 50% Area Median Income (65+) (2010) | |
|--|--------|
| Elder Households | 69,667 |
| Percent of All Households | 14.1% |

| Median Household Income (All Ages) | |
|------------------------------------|----------|
| 2008-2012 | \$43,419 |

| Medicaid & Medicare Eligibility | |
|---------------------------------|--------|
| Medicaid Eligible - All Ages | 90,103 |
| Medicaid Eligible - 60+ | 14,066 |
| Dual Eligible - All Ages | 19,514 |
| Dual Eligible - 60+ | 12,734 |

| Veterans | |
|-----------|--------|
| Total | 46,697 |
| Age 45-64 | 18,337 |
| Age 65-84 | 23,685 |
| Age 85+ | 4,675 |

| Disability Status (60+) | |
|--|---------|
| With One Type of Disability ⁶ | 20,782 |
| Hearing | 17,794 |
| Vision | 8,252 |
| Cognitive | 10,972 |
| Ambulatory | 27,230 |
| Self-Care | 9,644 |
| Independent Living | 16,970 |
| With Two or More Disabilities | 23,010 |
| With No Disabilities | 101,641 |
| Probable Alzheimer's Cases ⁷ | 13,773 |

| English Proficiency (60+) | |
|----------------------------------|-------|
| With Limited English Proficiency | 2,506 |

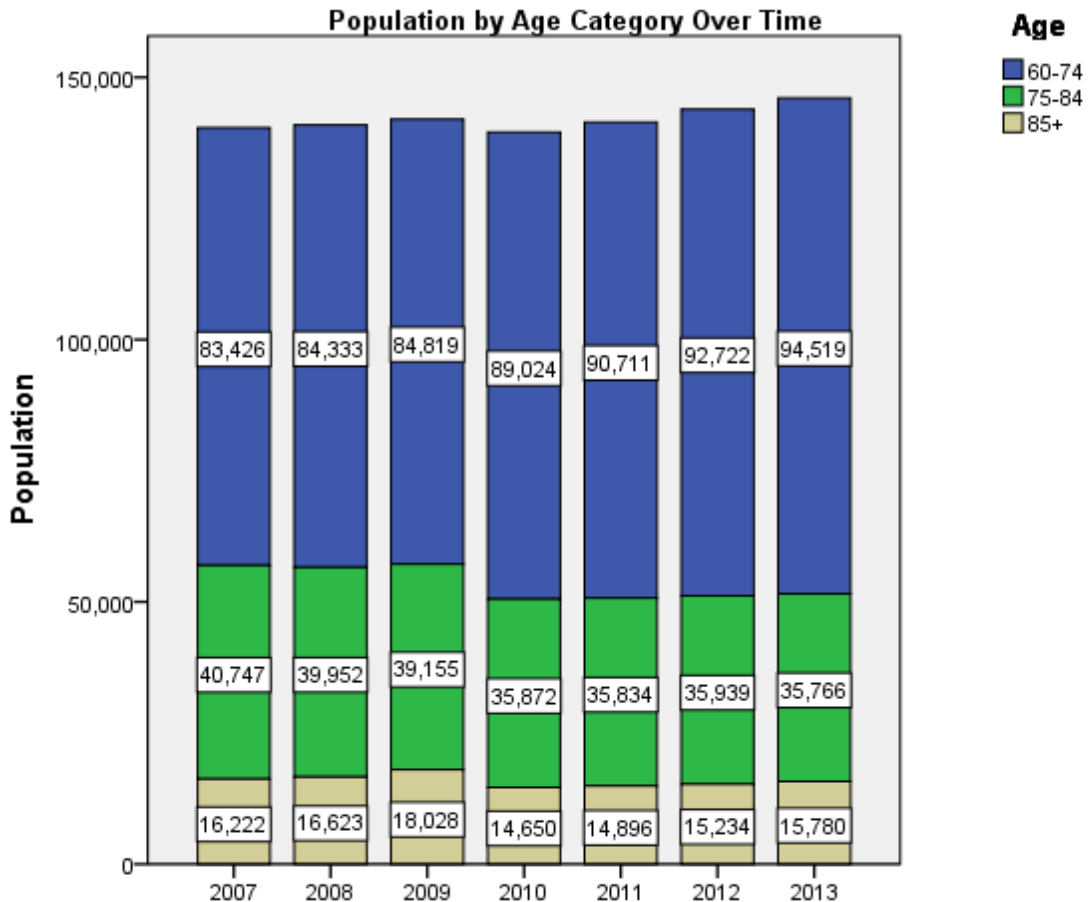
2013 Florida County Profiles

Volusia (Continued)

| Cost of Living | |
|------------------------|------------------------------|
| | Annual Expenses ⁸ |
| Single Elders | |
| Owner without Mortgage | \$19,164 |
| Renter, one bedroom | \$22,944 |
| Owner with Mortgage | \$27,648 |
| Elder Couple | |
| Owner without Mortgage | \$29,400 |
| Renter, one bedroom | \$33,180 |
| Owner with Mortgage | \$37,884 |

Note: Wider Opportunities for Women Elder Economic Security Standard™ Index (Elder Index) measures how much income retired older adults require to meet their basic needs—without public or private assistance. The Elder Index measures basic expenses for elders age 65+ living in the community, not in institutions.

| Useful Websites |
|--|
| County Chronic Disease Profile (Volusia) |
| Florida Housing Data Clearinghouse (Volusia) |
| Behavioral Risk Factors (BRFSS) (Volusia) |





2013 Florida County Profiles

¹ Total Minorities = (60+ Population) – (White Non-Hispanic 60+)

² OSS beds: Optional State Supplementation beds

³ ECC License: Extended Congregate Care License

⁴ LMH License: Limited Mental Health License

⁵ LNS License: Limited Nursing Services License

⁶ With One Type of Disability: 60+ people who have only one type of disability

⁷ Probable Alzheimer's Cases = (65-74 Population x 0.0136) + (75-84 Population x 0.1822) + (85+ Population x 0.4098)

⁸ Annual expenses include: housing, including utilities, taxes, insurance; food; transportation; health care, based on good health; and miscellaneous.

Sources

- Population: Florida Population by County, Age, Race, Ethnicity and Gender provided by Florida Legislature, Office of Economic and Demographic Research
- Financial Status & Living Situation: Department of Elder Affairs calculations based on Florida Population data and 2007-2011 American Community Survey
- Medically Underserved Population (Data as of 7/18/2014): Florida Department of Health and U.S. Department of Health and Human Services
- Grandparents: Department of Elder Affairs calculations based on Florida Population data and 2007-2011 American Community Survey, Special Tabulation on Aging
- Skilled Nursing Facility Utilization, Adult Day Care, Adult Family Care Home, Ambulatory Surgical Centers, Assisted Living Facilities, Home Health Agencies, Homemakers & Companion Service Companies, Hospitals: Florida Agency for Health Care Administration
- Rural Designation: Based on the definition of Rural Designation by Rural Economic Development Initiative
- Medical Professionals: Florida Department of Health
- Driver's License: Florida Department of Highway Safety & Motor Vehicles
- Food Stamps: Florida Department of Children and Families
- Registered Voters (Data as of 1/31/2014) : Florida Department of State
- Households with Cost Burden Above 30% and income below 50% Area Median Income: The Shimberg Center for Housing Studies
- Median Household Incomes: U.S. Census Bureau: State and County QuickFacts
- Medicaid & Medicare Eligibility and Medicaid Eligibility: Florida Agency for Health Care Administration
- Veterans Demographics: Florida Department of Veterans' Affairs
- Disability Status: Department of Elder Affairs calculations based on Florida Population data and 2009-2011 American Community Survey Data
- Probable Alzheimer's Cases: Department of Elder Affairs calculations based on Florida Population data and Alzheimer's by Age in 2011 Alzheimer's Disease Facts and Figures report at http://www.alz.org/documents_custom/Facts_2011/ALZ_FL.pdf?type=interior_map&facts=undefined&facts=facts
- English Proficiency: Department of Elder Affairs calculations based on Florida Population data and 2007-2011 American Community Survey, Special Tabulation on Aging
- Cost of Living (Data as of 7/18/2014): Wider Opportunities for Women Elder Economic Security Standard™ Index (Elder Index) at <http://www.basiceconomicsecurity.org/EI/>