



2013 Florida County Profiles

St. Lucie

Population by Age Category		
All Ages	281,151	100.0%
Under 60	206,401	73.4%
60+	74,750	26.6%
65+	56,838	20.2%
70+	40,155	14.3%
75+	26,282	9.3%
80+	15,537	5.5%
85+	7,084	2.5%

Population by Race (60+)		
White	65,767	88.0%
Non-White	9,750	13.0%
Black	8,698	11.6%
Other Minorities	1,052	1.4%

Population by Ethnicity (60+)		
Total Hispanic	5,262	7.0%
White	4,795	6.4%
Non-White	467	0.6%
Total Non-Hispanic	69,488	93.0%
Total Minorities ¹	13,778	18.4%

Population by Gender (60+)		
Population 60+	74,750	26.6%
Male	34,133	45.7%
Female	40,617	54.3%

Financial Status (60+, % 60+)		
Below Poverty Guideline	6,512	8.7%
Below 125% of Poverty Guideline	10,008	13.4%
Minorities Below Poverty Guideline	2,329	3.1%
Minorities Below 125% of Poverty Guideline	3,536	4.7%

Medically Underserved (65+)		
Total Medically Underserved		18,417
Medically Underserved Populations - Living in Areas Defined as Having Medically Underserved Populations		18,417
Medically Underserved Areas - Living in Medically Underserved Areas		0

Living Situation (60+)		
Living Alone		15,396
Male		4,881
Female		10,515

Grandparents (60+)	
Total 60+ Living With Own Grandchildren (Under Age 18)	3,773
Grandparent Responsible for Own Grandchildren (Under Age 18)	1,401
Grandparent Not Responsible for Own Grandchildren (Under Age 18)	2,367
60+ Not Living With Own Grandchildren (Under Age 18)	69,991

Skilled Nursing Facility Utilization	
SNF Beds	1,050
Community Beds	1,050
Sheltered Beds	0
Veterans Administration Beds	0
Other Beds	0
SNFs With Beds	9
Community Beds	9
Sheltered Beds	0
Veterans Administration Beds	0
Other Beds	0
SNFs With Community Beds	9
Community Bed Days	383,250
Community Patient Days	323,093
Medicaid Patient Days	217,729
Occupancy Rate	84.3%
Percent Medicaid	67.4%

Adult Day Care	
Facilities	3
Capacity	122

Adult Family Care Homes	
Homes	10
Beds	46

Home Health Agencies	
Agencies	24
Medicaid Certified Agencies	2
Medicare Certified Agencies	20

Homemaker & Companion Service Companies	
Companies	29

Ambulatory Surgical Centers	
Facilities	6
Operating Rooms	15
Recovery Beds	41



2013 Florida County Profiles

St. Lucie (Continued)

Rural Designation	
Rural (Yes/No)	NO

Assisted Living Facilities	
Total Beds	1,041
OSS Beds ²	146
Non-OSS Beds	895
Total Facilities	57
Facilities With ECC License ³	9
Facilities With LMH License ⁴	11
Facilities With LNS License ⁵	20

Hospitals	
Hospitals	3
Hospitals With Skilled Nursing Units	0
Hospital Beds	674
Skilled Nursing Unit Beds	0

Medical Professionals	
Medical Doctors	
Licensed	333
Limited License	4
Critical Need Area License	3
Restricted	0
Medical Faculty Certificate	0
Public Health Certificate	0
Specialties	
Licensed Podiatric Physicians	12
Licensed Osteopathic Physicians	50
Licensed Chiropractic Physicians	65
Registered Nurses	
Licensed Registered Nurses	3,289

Driver's License	
Drivers With Florida Driver's License - All Ages	216,157
Drivers With Florida Driver's License - Age 60+	69,013
Percent of Drivers With Florida Driver's License - Age 60+	43.8%

Food Stamps (60+)	
Participants (60+)	4,706
Potentially Eligible	10,008
Food Stamp Participation Rate (60+)	47.0%

Registered Voters	
Registered to Vote in Florida - All Ages	177,935
Registered to Vote in Florida - Age 60+	66,800
Percent of Population Registered to Vote in Florida - Age 60+	37.5%

Households With Cost Burden Above 30% and Income Below 50% Area Median Income (65+) (2010)	
Elder Households	38,238
Percent of All Households	14.7%

Median Household Income (All Ages)	
2008-2012	\$43,923

Medicaid & Medicare Eligibility	
Medicaid Eligible - All Ages	53,093
Medicaid Eligible - 60+	6,666
Dual Eligible - All Ages	9,370
Dual Eligible - 60+	5,926

Veterans	
Total	19,179
Age 45-64	7,637
Age 65-84	9,638
Age 85+	1,904

Disability Status (60+)	
With One Type of Disability ⁶	11,387
Hearing	9,891
Vision	3,652
Cognitive	5,541
Ambulatory	14,682
Self-Care	4,717
Independent Living	8,889
With Two or More Disabilities	12,017
With No Disabilities	52,627
Probable Alzheimer's Cases ⁷	6,818

English Proficiency (60+)	
With Limited English Proficiency	2,513

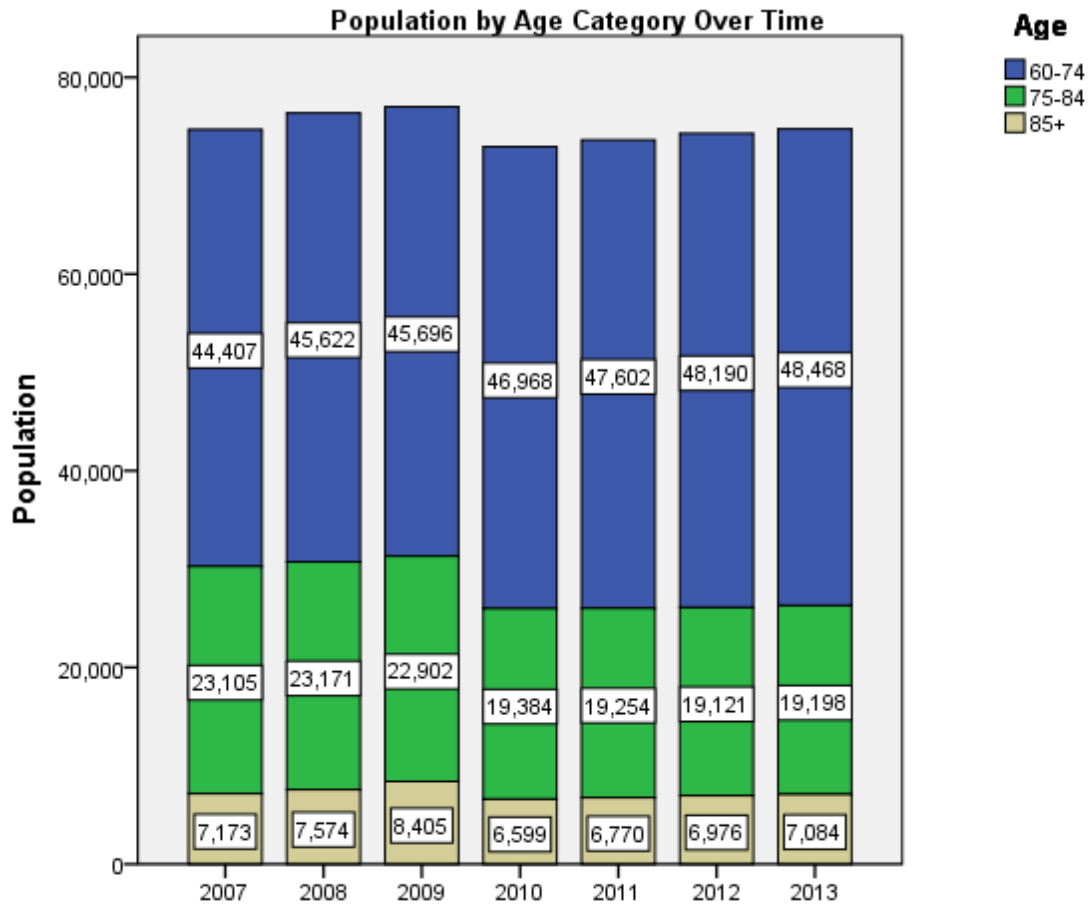
2013 Florida County Profiles

St. Lucie (Continued)

Cost of Living	
	Annual Expenses ⁸
Single Elders	
Owner without Mortgage	\$18,432
Renter, one bedroom	\$21,792
Owner with Mortgage	\$28,488
Elder Couple	
Owner without Mortgage	\$27,384
Renter, one bedroom	\$30,744
Owner with Mortgage	\$37,440

Note: Wider Opportunities for Women Elder Economic Security Standard™ Index (Elder Index) measures how much income retired older adults require to meet their basic needs—without public or private assistance. The Elder Index measures basic expenses for elders age 65+ living in the community, not in institutions.

Useful Websites
County Chronic Disease Profile (St. Lucie)
Florida Housing Data Clearinghouse (St. Lucie)
Behavioral Risk Factors (BRFSS) (St. Lucie)





2013 Florida County Profiles

¹ Total Minorities = (60+ Population) – (White Non-Hispanic 60+)

² OSS beds: Optional State Supplementation beds

³ ECC License: Extended Congregate Care License

⁴ LMH License: Limited Mental Health License

⁵ LNS License: Limited Nursing Services License

⁶ With One Type of Disability: 60+ people who have only one type of disability

⁷ Probable Alzheimer's Cases = (65-74 Population x 0.0136) + (75-84 Population x 0.1822) + (85+ Population x 0.4098)

⁸ Annual expenses include: housing, including utilities, taxes, insurance; food; transportation; health care, based on good health; and miscellaneous.

Sources

- Population: Florida Population by County, Age, Race, Ethnicity and Gender provided by Florida Legislature, Office of Economic and Demographic Research
- Financial Status & Living Situation: Department of Elder Affairs calculations based on Florida Population data and 2007-2011 American Community Survey
- Medically Underserved Population (Data as of 7/18/2014): Florida Department of Health and U.S. Department of Health and Human Services
- Grandparents: Department of Elder Affairs calculations based on Florida Population data and 2007-2011 American Community Survey, Special Tabulation on Aging
- Skilled Nursing Facility Utilization, Adult Day Care, Adult Family Care Home, Ambulatory Surgical Centers, Assisted Living Facilities, Home Health Agencies, Homemakers & Companion Service Companies, Hospitals: Florida Agency for Health Care Administration
- Rural Designation: Based on the definition of Rural Designation by Rural Economic Development Initiative
- Medical Professionals: Florida Department of Health
- Driver's License: Florida Department of Highway Safety & Motor Vehicles
- Food Stamps: Florida Department of Children and Families
- Registered Voters (Data as of 1/31/2014) : Florida Department of State
- Households with Cost Burden Above 30% and income below 50% Area Median Income: The Shimberg Center for Housing Studies
- Median Household Incomes: U.S. Census Bureau: State and County QuickFacts
- Medicaid & Medicare Eligibility and Medicaid Eligibility: Florida Agency for Health Care Administration
- Veterans Demographics: Florida Department of Veterans' Affairs
- Disability Status: Department of Elder Affairs calculations based on Florida Population data and 2009-2011 American Community Survey Data
- Probable Alzheimer's Cases: Department of Elder Affairs calculations based on Florida Population data and Alzheimer's by Age in 2011 Alzheimer's Disease Facts and Figures report at http://www.alz.org/documents_custom/Facts_2011/ALZ_FL.pdf?type=interior_map&facts=undefined&facts=facts
- English Proficiency: Department of Elder Affairs calculations based on Florida Population data and 2007-2011 American Community Survey, Special Tabulation on Aging
- Cost of Living (Data as of 7/18/2014): Wider Opportunities for Women Elder Economic Security Standard™ Index (Elder Index) at <http://www.basiceconomicsecurity.org/EI/>