



2013 Florida County Profiles

Seminole

Population by Age Category		
All Ages	431,074	100.0%
Under 60	349,597	81.1%
60+	81,477	18.9%
65+	56,613	13.1%
70+	37,275	8.6%
75+	24,172	5.6%
80+	15,002	3.5%
85+	7,765	1.8%

Population by Race (60+)		
White	71,766	88.1%
Non-White	9,823	12.1%
Black	7,131	8.8%
Other Minorities	2,692	3.3%

Population by Ethnicity (60+)		
Total Hispanic	9,038	11.1%
White	8,232	10.1%
Non-White	806	1.0%
Total Non-Hispanic	72,439	88.9%
Total Minorities ¹	17,943	22.0%

Population by Gender (60+)		
Population 60+	81,477	18.9%
Male	36,203	44.4%
Female	45,274	55.6%

Financial Status (60+, % 60+)		
Below Poverty Guideline	6,621	8.1%
Below 125% of Poverty Guideline	9,269	11.4%
Minorities Below Poverty Guideline	2,875	3.5%
Minorities Below 125% of Poverty Guideline	3,680	4.5%

Medically Underserved (65+)	
Total Medically Underserved	4,261
Medically Underserved Populations - Living in Areas Defined as Having Medically Underserved Populations	0
Medically Underserved Areas - Living in Medically Underserved Areas	4,261

Living Situation (60+)	
Living Alone	16,921
Male	4,746
Female	12,175

Grandparents (60+)	
Total 60+ Living With Own Grandchildren (Under Age 18)	6,059
Grandparent Responsible for Own Grandchildren (Under Age 18)	1,478
Grandparent Not Responsible for Own Grandchildren (Under Age 18)	4,581
60+ Not Living With Own Grandchildren (Under Age 18)	73,940

Skilled Nursing Facility Utilization	
SNF Beds	1,232
Community Beds	1,172
Sheltered Beds	60
Veterans Administration Beds	0
Other Beds	0
SNFs With Beds	11
Community Beds	10
Sheltered Beds	1
Veterans Administration Beds	0
Other Beds	0
SNFs With Community Beds	10
Community Bed Days	427,780
Community Patient Days	390,474
Medicaid Patient Days	236,299
Occupancy Rate	91.3%
Percent Medicaid	60.5%

Adult Day Care	
Facilities	2
Capacity	80

Adult Family Care Homes	
Homes	4
Beds	19

Home Health Agencies	
Agencies	29
Medicaid Certified Agencies	6
Medicare Certified Agencies	15

Homemaker & Companion Service Companies	
Companies	28

Ambulatory Surgical Centers	
Facilities	7
Operating Rooms	15
Recovery Beds	50



2013 Florida County Profiles

Seminole (Continued)

Rural Designation	
Rural (Yes/No)	NO

Assisted Living Facilities	
Total Beds	2,016
OSS Beds ²	263
Non-OSS Beds	1,753
Total Facilities	45
Facilities With ECC License ³	6
Facilities With LMH License ⁴	4
Facilities With LNS License ⁵	18

Hospitals	
Hospitals	3
Hospitals With Skilled Nursing Units	0
Hospital Beds	767
Skilled Nursing Unit Beds	0

Medical Professionals	
Medical Doctors	
Licensed	778
Limited License	2
Critical Need Area License	1
Restricted	0
Medical Faculty Certificate	0
Public Health Certificate	0
Specialties	
Licensed Podiatric Physicians	31
Licensed Osteopathic Physicians	89
Licensed Chiropractic Physicians	132
Registered Nurses	
Licensed Registered Nurses	5,839

Driver's License	
Drivers With Florida Driver's License - All Ages	341,427
Drivers With Florida Driver's License - Age 60+	76,504
Percent of Drivers With Florida Driver's License - Age 60+	31.9%

Food Stamps (60+)	
Participants (60+)	4,401
Potentially Eligible	9,269
Food Stamp Participation Rate (60+)	47.5%

Registered Voters	
Registered to Vote in Florida - All Ages	268,529
Registered to Vote in Florida - Age 60+	69,623
Percent of Population Registered to Vote in Florida - Age 60+	25.9%

Households With Cost Burden Above 30% and Income Below 50% Area Median Income (65+) (2010)	
Elder Households	30,859
Percent of All Households	16.4%

Median Household Income (All Ages)	
2008-2012	\$58,577

Medicaid & Medicare Eligibility	
Medicaid Eligible - All Ages	51,899
Medicaid Eligible - 60+	6,743
Dual Eligible - All Ages	8,871
Dual Eligible - 60+	5,959

Veterans	
Total	23,649
Age 45-64	12,370
Age 65-84	9,461
Age 85+	1,818

Disability Status (60+)	
With One Type of Disability ⁶	10,339
Hearing	8,082
Vision	4,035
Cognitive	5,502
Ambulatory	14,823
Self-Care	5,968
Independent Living	9,941
With Two or More Disabilities	12,254
With No Disabilities	61,311
Probable Alzheimer's Cases ⁷	6,614

English Proficiency (60+)	
With Limited English Proficiency	3,410

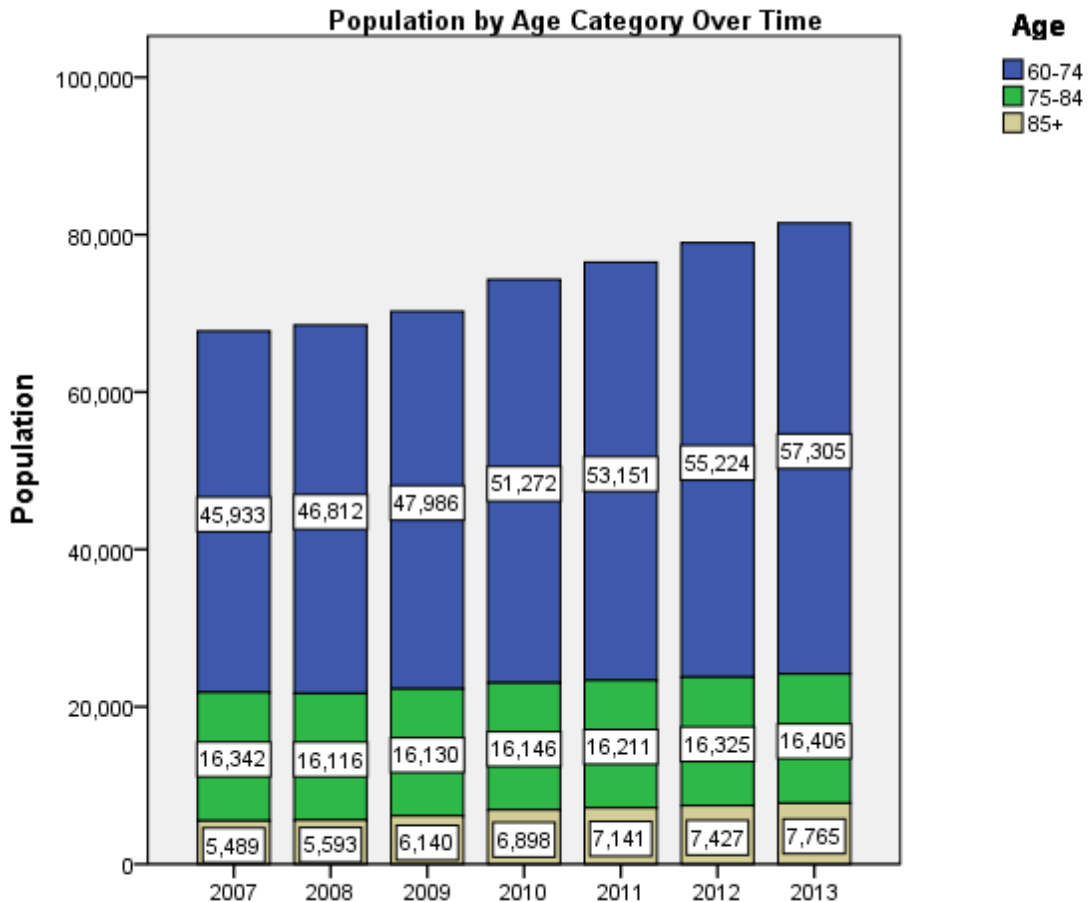
2013 Florida County Profiles

Seminole (Continued)

Cost of Living	
	Annual Expenses ⁸
Single Elders	
Owner without Mortgage	\$17,880
Renter, one bedroom	\$23,460
Owner with Mortgage	\$27,348
Elder Couple	
Owner without Mortgage	\$27,516
Renter, one bedroom	\$33,096
Owner with Mortgage	\$36,984

Note: Wider Opportunities for Women Elder Economic Security Standard™ Index (Elder Index) measures how much income retired older adults require to meet their basic needs—without public or private assistance. The Elder Index measures basic expenses for elders age 65+ living in the community, not in institutions.

Useful Websites
County Chronic Disease Profile (Seminole)
Florida Housing Data Clearinghouse (Seminole)
Behavioral Risk Factors (BRFSS) (Seminole)





2013 Florida County Profiles

¹ Total Minorities = (60+ Population) – (White Non-Hispanic 60+)

² OSS beds: Optional State Supplementation beds

³ ECC License: Extended Congregate Care License

⁴ LMH License: Limited Mental Health License

⁵ LNS License: Limited Nursing Services License

⁶ With One Type of Disability: 60+ people who have only one type of disability

⁷ Probable Alzheimer's Cases = (65-74 Population x 0.0136) + (75-84 Population x 0.1822) + (85+ Population x 0.4098)

⁸ Annual expenses include: housing, including utilities, taxes, insurance; food; transportation; health care, based on good health; and miscellaneous.

Sources

- Population: Florida Population by County, Age, Race, Ethnicity and Gender provided by Florida Legislature, Office of Economic and Demographic Research
- Financial Status & Living Situation: Department of Elder Affairs calculations based on Florida Population data and 2007-2011 American Community Survey
- Medically Underserved Population (Data as of 7/18/2014): Florida Department of Health and U.S. Department of Health and Human Services
- Grandparents: Department of Elder Affairs calculations based on Florida Population data and 2007-2011 American Community Survey, Special Tabulation on Aging
- Skilled Nursing Facility Utilization, Adult Day Care, Adult Family Care Home, Ambulatory Surgical Centers, Assisted Living Facilities, Home Health Agencies, Homemakers & Companion Service Companies, Hospitals: Florida Agency for Health Care Administration
- Rural Designation: Based on the definition of Rural Designation by Rural Economic Development Initiative
- Medical Professionals: Florida Department of Health
- Driver's License: Florida Department of Highway Safety & Motor Vehicles
- Food Stamps: Florida Department of Children and Families
- Registered Voters (Data as of 1/31/2014) : Florida Department of State
- Households with Cost Burden Above 30% and income below 50% Area Median Income: The Shimberg Center for Housing Studies
- Median Household Incomes: U.S. Census Bureau: State and County QuickFacts
- Medicaid & Medicare Eligibility and Medicaid Eligibility: Florida Agency for Health Care Administration
- Veterans Demographics: Florida Department of Veterans' Affairs
- Disability Status: Department of Elder Affairs calculations based on Florida Population data and 2009-2011 American Community Survey Data
- Probable Alzheimer's Cases: Department of Elder Affairs calculations based on Florida Population data and Alzheimer's by Age in 2011 Alzheimer's Disease Facts and Figures report at http://www.alz.org/documents_custom/Facts_2011/ALZ_FL.pdf?type=interior_map&facts=undefined&facts=facts
- English Proficiency: Department of Elder Affairs calculations based on Florida Population data and 2007-2011 American Community Survey, Special Tabulation on Aging
- Cost of Living (Data as of 7/18/2014): Wider Opportunities for Women Elder Economic Security Standard™ Index (Elder Index) at <http://www.basiceconomicsecurity.org/EI/>