



2013 Florida County Profiles

Pinellas

Population by Age Category		
All Ages	926,610	100.0%
Under 60	650,526	70.2%
60+	276,084	29.8%
65+	207,229	22.4%
70+	147,152	15.9%
75+	101,052	10.9%
80+	65,816	7.1%
85+	34,734	3.7%

Population by Race (60+)		
White	254,452	92.2%
Non-White	19,814	7.2%
Black	14,337	5.2%
Other Minorities	5,477	2.0%

Population by Ethnicity (60+)		
Total Hispanic	9,319	3.4%
White	8,397	3.0%
Non-White	922	0.3%
Total Non-Hispanic	266,765	96.6%
Total Minorities ¹	30,029	10.9%

Population by Gender (60+)		
Population 60+	276,084	29.8%
Male	124,147	45.0%
Female	151,937	55.0%

Financial Status (60+, % 60+)		
Below Poverty Guideline	25,747	9.3%
Below 125% of Poverty Guideline	38,522	14.0%
Minorities Below Poverty Guideline	5,562	2.0%
Minorities Below 125% of Poverty Guideline	7,357	2.7%

Medically Underserved (65+)		
Total Medically Underserved		19,378
Medically Underserved Populations - Living in Areas Defined as Having Medically Underserved Populations		19,378
Medically Underserved Areas - Living in Medically Underserved Areas		0

Living Situation (60+)		
Living Alone		83,021
Male		25,209
Female		57,812

Grandparents (60+)	
Total 60+ Living With Own Grandchildren (Under Age 18)	7,628
Grandparent Responsible for Own Grandchildren (Under Age 18)	2,785
Grandparent Not Responsible for Own Grandchildren (Under Age 18)	4,843
60+ Not Living With Own Grandchildren (Under Age 18)	259,268

Skilled Nursing Facility Utilization	
SNF Beds	8,007
Community Beds	7,777
Sheltered Beds	201
Veterans Administration Beds	0
Other Beds	29
SNFs With Beds	77
Community Beds	72
Sheltered Beds	4
Veterans Administration Beds	0
Other Beds	1
SNFs With Community Beds	72
Community Bed Days	2,838,605
Community Patient Days	2,506,265
Medicaid Patient Days	1,624,704
Occupancy Rate	88.3%
Percent Medicaid	64.8%

Adult Day Care	
Facilities	5
Capacity	378

Adult Family Care Homes	
Homes	18
Beds	74

Home Health Agencies	
Agencies	97
Medicaid Certified Agencies	16
Medicare Certified Agencies	55

Homemaker & Companion Service Companies	
Companies	81

Ambulatory Surgical Centers	
Facilities	27
Operating Rooms	74
Recovery Beds	214



2013 Florida County Profiles

Pinellas (Continued)

Rural Designation	
Rural (Yes/No)	NO

Assisted Living Facilities	
Total Beds	7,766
OSS Beds ²	1,571
Non-OSS Beds	6,195
Total Facilities	182
Facilities With ECC License ³	39
Facilities With LMH License ⁴	33
Facilities With LNS License ⁵	37

Hospitals	
Hospitals	17
Hospitals With Skilled Nursing Units	3
Hospital Beds	4,149
Skilled Nursing Unit Beds	78

Medical Professionals	
Medical Doctors	
Licensed	2,720
Limited License	7
Critical Need Area License	4
Restricted	0
Medical Faculty Certificate	0
Public Health Certificate	0
Specialties	
Licensed Podiatric Physicians	79
Licensed Osteopathic Physicians	514
Licensed Chiropractic Physicians	384
Registered Nurses	
Licensed Registered Nurses	14,253

Driver's License	
Drivers With Florida Driver's License - All Ages	727,353
Drivers With Florida Driver's License - Age 60+	233,126
Percent of Drivers With Florida Driver's License - Age 60+	32.1%

Food Stamps (60+)	
Participants (60+)	15,818
Potentially Eligible	38,522
Food Stamp Participation Rate (60+)	41.1%

Registered Voters	
Registered to Vote in Florida - All Ages	614,236
Registered to Vote in Florida - Age 60+	220,244
Percent of Population Registered to Vote in Florida - Age 60+	35.9%

Households With Cost Burden Above 30% and Income Below 50% Area Median Income (65+) (2010)	
Elder Households	130,951
Percent of All Households	17.3%

Median Household Income (All Ages)	
2008-2012	\$46,051

Medicaid & Medicare Eligibility	
Medicaid Eligible - All Ages	141,180
Medicaid Eligible - 60+	26,342
Dual Eligible - All Ages	36,666
Dual Eligible - 60+	23,815

Veterans	
Total	74,413
Age 45-64	31,378
Age 65-84	34,828
Age 85+	8,207

Disability Status (60+)	
With One Type of Disability ⁶	36,844
Hearing	31,948
Vision	14,673
Cognitive	21,541
Ambulatory	55,905
Self-Care	18,168
Independent Living	36,011
With Two or More Disabilities	46,359
With No Disabilities	188,840
Probable Alzheimer's Cases ⁷	27,767

English Proficiency (60+)	
With Limited English Proficiency	7,034

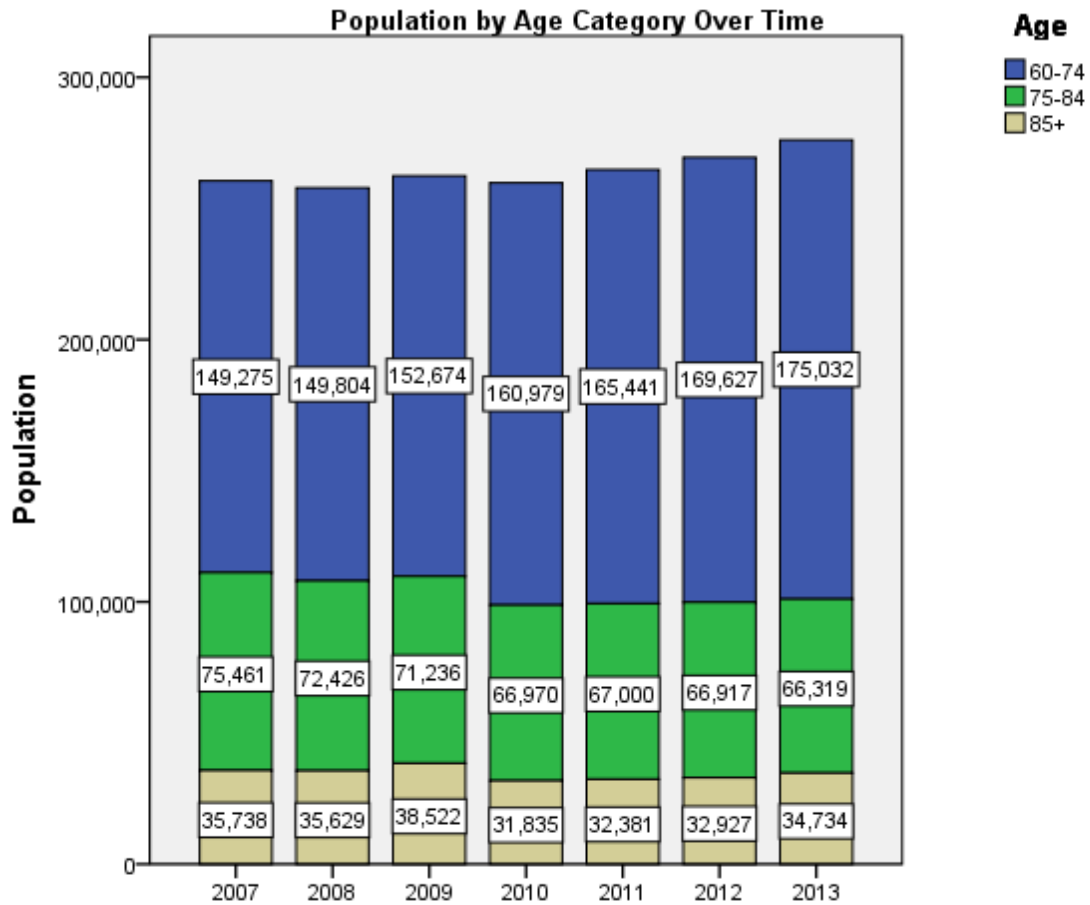
2013 Florida County Profiles

Pinellas (Continued)

Cost of Living	
	Annual Expenses ⁸
Single Elders	
Owner without Mortgage	\$18,660
Renter, one bedroom	\$22,524
Owner with Mortgage	\$27,372
Elder Couple	
Owner without Mortgage	\$28,092
Renter, one bedroom	\$31,956
Owner with Mortgage	\$36,804

Note: Wider Opportunities for Women Elder Economic Security Standard™ Index (Elder Index) measures how much income retired older adults require to meet their basic needs—without public or private assistance. The Elder Index measures basic expenses for elders age 65+ living in the community, not in institutions.

Useful Websites
County Chronic Disease Profile (Pinellas)
Florida Housing Data Clearinghouse (Pinellas)
Behavioral Risk Factors (BRFSS) (Pinellas)





2013 Florida County Profiles

¹ Total Minorities = (60+ Population) – (White Non-Hispanic 60+)

² OSS beds: Optional State Supplementation beds

³ ECC License: Extended Congregate Care License

⁴ LMH License: Limited Mental Health License

⁵ LNS License: Limited Nursing Services License

⁶ With One Type of Disability: 60+ people who have only one type of disability

⁷ Probable Alzheimer's Cases = (65-74 Population x 0.0136) + (75-84 Population x 0.1822) + (85+ Population x 0.4098)

⁸ Annual expenses include: housing, including utilities, taxes, insurance; food; transportation; health care, based on good health; and miscellaneous.

Sources

- Population: Florida Population by County, Age, Race, Ethnicity and Gender provided by Florida Legislature, Office of Economic and Demographic Research
- Financial Status & Living Situation: Department of Elder Affairs calculations based on Florida Population data and 2007-2011 American Community Survey
- Medically Underserved Population (Data as of 7/18/2014): Florida Department of Health and U.S. Department of Health and Human Services
- Grandparents: Department of Elder Affairs calculations based on Florida Population data and 2007-2011 American Community Survey, Special Tabulation on Aging
- Skilled Nursing Facility Utilization, Adult Day Care, Adult Family Care Home, Ambulatory Surgical Centers, Assisted Living Facilities, Home Health Agencies, Homemakers & Companion Service Companies, Hospitals: Florida Agency for Health Care Administration
- Rural Designation: Based on the definition of Rural Designation by Rural Economic Development Initiative
- Medical Professionals: Florida Department of Health
- Driver's License: Florida Department of Highway Safety & Motor Vehicles
- Food Stamps: Florida Department of Children and Families
- Registered Voters (Data as of 1/31/2014) : Florida Department of State
- Households with Cost Burden Above 30% and income below 50% Area Median Income: The Shimberg Center for Housing Studies
- Median Household Incomes: U.S. Census Bureau: State and County QuickFacts
- Medicaid & Medicare Eligibility and Medicaid Eligibility: Florida Agency for Health Care Administration
- Veterans Demographics: Florida Department of Veterans' Affairs
- Disability Status: Department of Elder Affairs calculations based on Florida Population data and 2009-2011 American Community Survey Data
- Probable Alzheimer's Cases: Department of Elder Affairs calculations based on Florida Population data and Alzheimer's by Age in 2011 Alzheimer's Disease Facts and Figures report at http://www.alz.org/documents_custom/Facts_2011/ALZ_FL.pdf?type=interior_map&facts=undefined&facts=facts
- English Proficiency: Department of Elder Affairs calculations based on Florida Population data and 2007-2011 American Community Survey, Special Tabulation on Aging
- Cost of Living (Data as of 7/18/2014): Wider Opportunities for Women Elder Economic Security Standard™ Index (Elder Index) at <http://www.basiceconomicsecurity.org/EI/>