



2013 Florida County Profiles

Pasco

Population by Age Category		
All Ages	473,566	100.0%
Under 60	342,530	72.3%
60+	131,036	27.7%
65+	99,642	21.0%
70+	69,697	14.7%
75+	45,827	9.7%
80+	27,914	5.9%
85+	13,465	2.8%

Population by Race (60+)		
White	126,170	96.3%
Non-White	5,077	3.9%
Black	2,903	2.2%
Other Minorities	2,174	1.7%

Population by Ethnicity (60+)		
Total Hispanic	6,584	5.0%
White	6,082	4.6%
Non-White	502	0.4%
Total Non-Hispanic	124,452	95.0%
Total Minorities ¹	10,948	8.4%

Population by Gender (60+)		
Population 60+	131,036	27.7%
Male	59,728	45.6%
Female	71,308	54.4%

Financial Status (60+, % 60+)		
Below Poverty Guideline	11,864	9.1%
Below 125% of Poverty Guideline	18,961	14.5%
Minorities Below Poverty Guideline	1,521	1.2%
Minorities Below 125% of Poverty Guideline	2,045	1.6%

Medically Underserved (65+)		
Total Medically Underserved	31,433	
Medically Underserved Populations - Living in Areas Defined as Having Medically Underserved Populations	31,433	
Medically Underserved Areas - Living in Medically Underserved Areas	0	

Living Situation (60+)		
Living Alone	30,150	
Male	9,157	
Female	20,993	

Grandparents (60+)	
Total 60+ Living With Own Grandchildren (Under Age 18)	4,430
Grandparent Responsible for Own Grandchildren (Under Age 18)	1,238
Grandparent Not Responsible for Own Grandchildren (Under Age 18)	3,192
60+ Not Living With Own Grandchildren (Under Age 18)	124,284

Skilled Nursing Facility Utilization	
SNF Beds	2,058
Community Beds	1,938
Sheltered Beds	0
Veterans Administration Beds	120
Other Beds	0
SNFs With Beds	18
Community Beds	17
Sheltered Beds	0
Veterans Administration Beds	1
Other Beds	0
SNFs With Community Beds	17
Community Bed Days	707,370
Community Patient Days	642,357
Medicaid Patient Days	386,863
Occupancy Rate	90.8%
Percent Medicaid	60.2%

Adult Day Care	
Facilities	2
Capacity	81

Adult Family Care Homes	
Homes	11
Beds	51

Home Health Agencies	
Agencies	31
Medicaid Certified Agencies	6
Medicare Certified Agencies	21

Homemaker & Companion Service Companies	
Companies	36

Ambulatory Surgical Centers	
Facilities	13
Operating Rooms	36
Recovery Beds	119



2013 Florida County Profiles

Pasco (Continued)

Rural Designation	
Rural (Yes/No)	NO

Assisted Living Facilities	
Total Beds	1,824
OSS Beds ²	883
Non-OSS Beds	941
Total Facilities	46
Facilities With ECC License ³	11
Facilities With LMH License ⁴	12
Facilities With LNS License ⁵	6

Hospitals	
Hospitals	9
Hospitals With Skilled Nursing Units	0
Hospital Beds	1,190
Skilled Nursing Unit Beds	0

Medical Professionals	
Medical Doctors	
Licensed	683
Limited License	1
Critical Need Area License	0
Restricted	0
Medical Faculty Certificate	0
Public Health Certificate	0
Specialties	
Licensed Podiatric Physicians	23
Licensed Osteopathic Physicians	89
Licensed Chiropractic Physicians	103
Registered Nurses	
Licensed Registered Nurses	6,581

Driver's License	
Drivers With Florida Driver's License - All Ages	367,628
Drivers With Florida Driver's License - Age 60+	116,814
Percent of Drivers With Florida Driver's License - Age 60+	31.8%

Food Stamps (60+)	
Participants (60+)	7,073
Potentially Eligible	18,961
Food Stamp Participation Rate (60+)	37.3%

Registered Voters	
Registered to Vote in Florida - All Ages	295,213
Registered to Vote in Florida - Age 60+	106,051
Percent of Population Registered to Vote in Florida - Age 60+	35.9%

Households With Cost Burden Above 30% and Income Below 50% Area Median Income (65+) (2010)	
Elder Households	66,128
Percent of All Households	15.0%

Median Household Income (All Ages)	
2008-2012	\$43,787

Medicaid & Medicare Eligibility	
Medicaid Eligible - All Ages	80,929
Medicaid Eligible - 60+	11,441
Dual Eligible - All Ages	17,224
Dual Eligible - 60+	10,377

Veterans	
Total	42,440
Age 45-64	17,161
Age 65-84	21,195
Age 85+	4,084

Disability Status (60+)	
With One Type of Disability ⁶	20,995
Hearing	17,166
Vision	6,259
Cognitive	10,337
Ambulatory	26,699
Self-Care	7,477
Independent Living	14,798
With Two or More Disabilities	20,518
With No Disabilities	90,051
Probable Alzheimer's Cases ⁷	12,149

English Proficiency (60+)	
With Limited English Proficiency	2,694

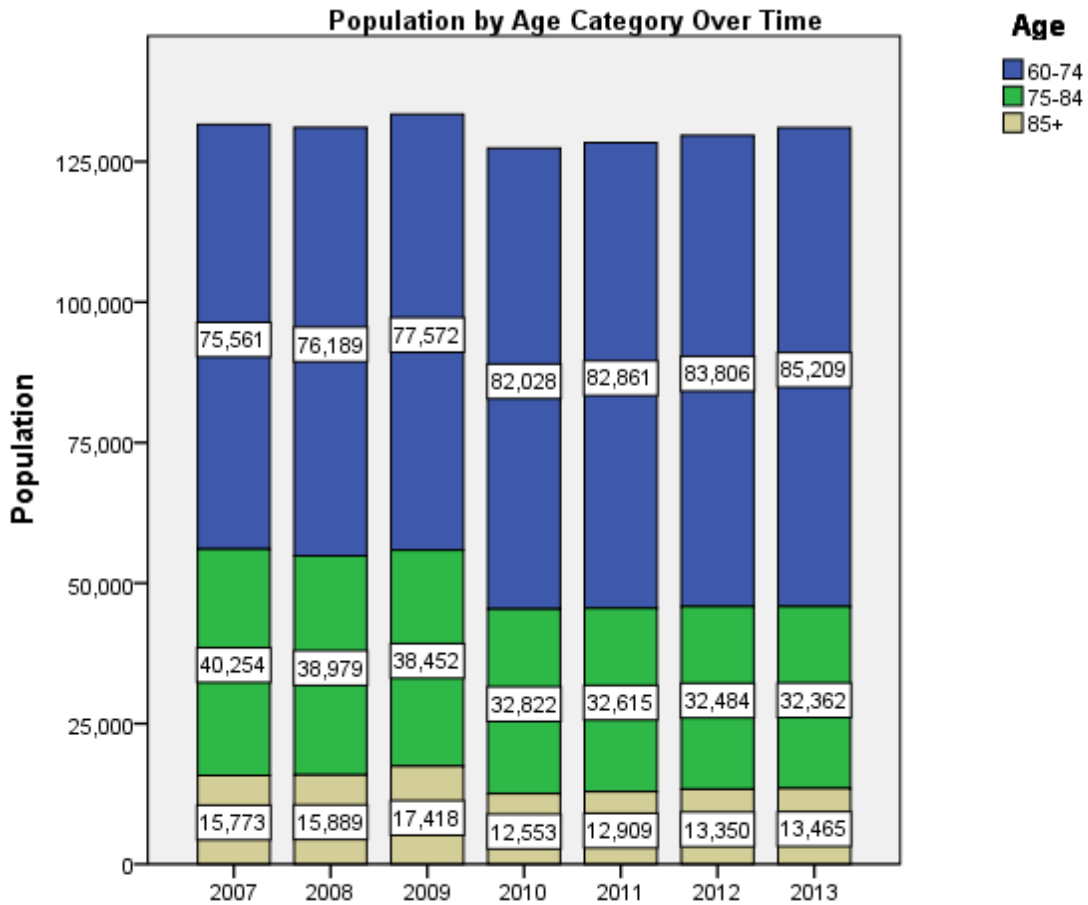
2013 Florida County Profiles

Pasco (Continued)

Cost of Living	
	Annual Expenses ⁸
Single Elders	
Owner without Mortgage	\$16,224
Renter, one bedroom	\$21,600
Owner with Mortgage	\$23,988
Elder Couple	
Owner without Mortgage	\$25,044
Renter, one bedroom	\$30,420
Owner with Mortgage	\$32,808

Note: Wider Opportunities for Women Elder Economic Security Standard™ Index (Elder Index) measures how much income retired older adults require to meet their basic needs—without public or private assistance. The Elder Index measures basic expenses for elders age 65+ living in the community, not in institutions.

Useful Websites
County Chronic Disease Profile (Pasco)
Florida Housing Data Clearinghouse (Pasco)
Behavioral Risk Factors (BRFSS) (Pasco)





2013 Florida County Profiles

¹ Total Minorities = (60+ Population) – (White Non-Hispanic 60+)

² OSS beds: Optional State Supplementation beds

³ ECC License: Extended Congregate Care License

⁴ LMH License: Limited Mental Health License

⁵ LNS License: Limited Nursing Services License

⁶ With One Type of Disability: 60+ people who have only one type of disability

⁷ Probable Alzheimer's Cases = (65-74 Population x 0.0136) + (75-84 Population x 0.1822) + (85+ Population x 0.4098)

⁸ Annual expenses include: housing, including utilities, taxes, insurance; food; transportation; health care, based on good health; and miscellaneous.

Sources

- Population: Florida Population by County, Age, Race, Ethnicity and Gender provided by Florida Legislature, Office of Economic and Demographic Research
- Financial Status & Living Situation: Department of Elder Affairs calculations based on Florida Population data and 2007-2011 American Community Survey
- Medically Underserved Population (Data as of 7/18/2014): Florida Department of Health and U.S. Department of Health and Human Services
- Grandparents: Department of Elder Affairs calculations based on Florida Population data and 2007-2011 American Community Survey, Special Tabulation on Aging
- Skilled Nursing Facility Utilization, Adult Day Care, Adult Family Care Home, Ambulatory Surgical Centers, Assisted Living Facilities, Home Health Agencies, Homemakers & Companion Service Companies, Hospitals: Florida Agency for Health Care Administration
- Rural Designation: Based on the definition of Rural Designation by Rural Economic Development Initiative
- Medical Professionals: Florida Department of Health
- Driver's License: Florida Department of Highway Safety & Motor Vehicles
- Food Stamps: Florida Department of Children and Families
- Registered Voters (Data as of 1/31/2014) : Florida Department of State
- Households with Cost Burden Above 30% and income below 50% Area Median Income: The Shimberg Center for Housing Studies
- Median Household Incomes: U.S. Census Bureau: State and County QuickFacts
- Medicaid & Medicare Eligibility and Medicaid Eligibility: Florida Agency for Health Care Administration
- Veterans Demographics: Florida Department of Veterans' Affairs
- Disability Status: Department of Elder Affairs calculations based on Florida Population data and 2009-2011 American Community Survey Data
- Probable Alzheimer's Cases: Department of Elder Affairs calculations based on Florida Population data and Alzheimer's by Age in 2011 Alzheimer's Disease Facts and Figures report at http://www.alz.org/documents_custom/Facts_2011/ALZ_FL.pdf?type=interior_map&facts=undefined&facts=facts
- English Proficiency: Department of Elder Affairs calculations based on Florida Population data and 2007-2011 American Community Survey, Special Tabulation on Aging
- Cost of Living (Data as of 7/18/2014): Wider Opportunities for Women Elder Economic Security Standard™ Index (Elder Index) at <http://www.basiceconomicsecurity.org/EI/>