



2013 Florida PSA Profiles

PSA 9

Population by Age Category		
All Ages	1,954,228	100.0%
Under 60	1,387,788	71.0%
60+	566,440	29.0%
65+	440,655	22.5%
70+	324,353	16.6%
75+	225,355	11.5%
80+	145,661	7.5%
85+	73,514	3.8%

Population by Race (60+)		
White	515,823	91.1%
Non-White	52,269	9.2%
Black	44,180	7.8%
Other Minorities	8,089	1.4%

Population by Ethnicity (60+)		
Total Hispanic	38,867	6.9%
White	35,665	6.3%
Non-White	3,202	0.6%
Total Non-Hispanic	527,573	93.1%
Total Minorities ¹	86,282	15.2%

Population by Gender (60+)		
Population 60+	566,440	29.0%
Male	253,355	44.7%
Female	313,085	55.3%

Financial Status (60+, % 60+)		
Below Poverty Guideline	46,481	8.2%
Below 125% of Poverty Guideline	69,201	12.2%
Minorities Below Poverty Guideline	15,647	2.8%
Minorities Below 125% of Poverty Guideline	21,719	3.8%

Medically Underserved (65+)		
Total Medically Underserved	58,561	
Medically Underserved Populations - Living in Areas Defined as Having Medically Underserved Populations	56,278	
Medically Underserved Areas - Living in Medically Underserved Areas	2,283	

Living Situation (60+)		
Living Alone	140,899	
Male	40,591	
Female	100,308	

Grandparents (60+)	
Total 60+ Living With Own Grandchildren (Under Age 18)	20,319
Grandparent Responsible for Own Grandchildren (Under Age 18)	5,835
Grandparent Not Responsible for Own Grandchildren (Under Age 18)	14,474
60+ Not Living With Own Grandchildren (Under Age 18)	537,331

Skilled Nursing Facility Utilization	
SNF Beds	9,065
Community Beds	8,590
Sheltered Beds	475
Veterans Administration Beds	0
Other Beds	0
SNFs With Beds	87
Community Beds	78
Sheltered Beds	9
Veterans Administration Beds	0
Other Beds	0
SNFs With Community Beds	78
Community Bed Days	3,156,020
Community Patient Days	2,687,529
Medicaid Patient Days	1,606,305
Occupancy Rate	85.2%
Percent Medicaid	59.8%

Adult Day Care	
Facilities	24
Capacity	1,342

Adult Family Care Homes	
Homes	29
Beds	126

Home Health Agencies	
Agencies	256
Medicaid Certified Agencies	51
Medicare Certified Agencies	159

Homemaker & Companion Service Companies	
Companies	196

Ambulatory Surgical Centers	
Facilities	57
Operating Rooms	141
Recovery Beds	389



2013 Florida PSA Profiles

PSA 9 (Continued)

Rural Designation	
Rural (Yes/No)	N/A

Assisted Living Facilities	
Total Beds	7,446
OSS Beds ²	772
Non-OSS Beds	6,674
Total Facilities	220
Facilities With ECC License ³	27
Facilities With LMH License ⁴	21
Facilities With LNS License ⁵	47

Hospitals	
Hospitals	27
Hospitals With Skilled Nursing Units	1
Hospital Beds	5,825
Skilled Nursing Unit Beds	33

Medical Professionals	
Medical Doctors	
Licensed	5,814
Limited License	65
Critical Need Area License	10
Restricted	0
Medical Faculty Certificate	1
Public Health Certificate	0
Specialties	
Licensed Podiatric Physicians	228
Licensed Osteopathic Physicians	683
Licensed Chiropractic Physicians	855
Registered Nurses	
Licensed Registered Nurses	24,348

Driver's License	
Drivers With Florida Driver's License - All Ages	1,657,519
Drivers With Florida Driver's License - Age 60+	588,632
Percent of Drivers With Florida Driver's License - Age 60+	35.5%

Food Stamps (60+)	
Participants (60+)	31,537
Potentially Eligible	69,201
Food Stamp Participation Rate (60+)	45.6%

Registered Voters	
Registered to Vote in Florida - All Ages	1,231,049
Registered to Vote in Florida - Age 60+	485,498
Percent of Population Registered to Vote in Florida - Age 60+	39.4%

Households With Cost Burden Above 30% and Income Below 50% Area Median Income (65+) (2010)	
Elder Households	273,355
Percent of All Households	15.1%

Median Household Income (All Ages)	
2008-2012	\$45,373

Medicaid & Medicare Eligibility	
Medicaid Eligible - All Ages	294,276
Medicaid Eligible - 60+	43,574
Dual Eligible - All Ages	53,004
Dual Eligible - 60+	38,135

Veterans	
Total	114,846
Age 45-64	40,097
Age 65-84	58,615
Age 85+	16,133

Disability Status (60+)	
With One Type of Disability ⁶	81,001
Hearing	68,072
Vision	24,708
Cognitive	37,851
Ambulatory	100,338
Self-Care	35,264
Independent Living	62,767
With Two or More Disabilities	81,568
With No Disabilities	408,207
Probable Alzheimer's Cases ⁷	60,732

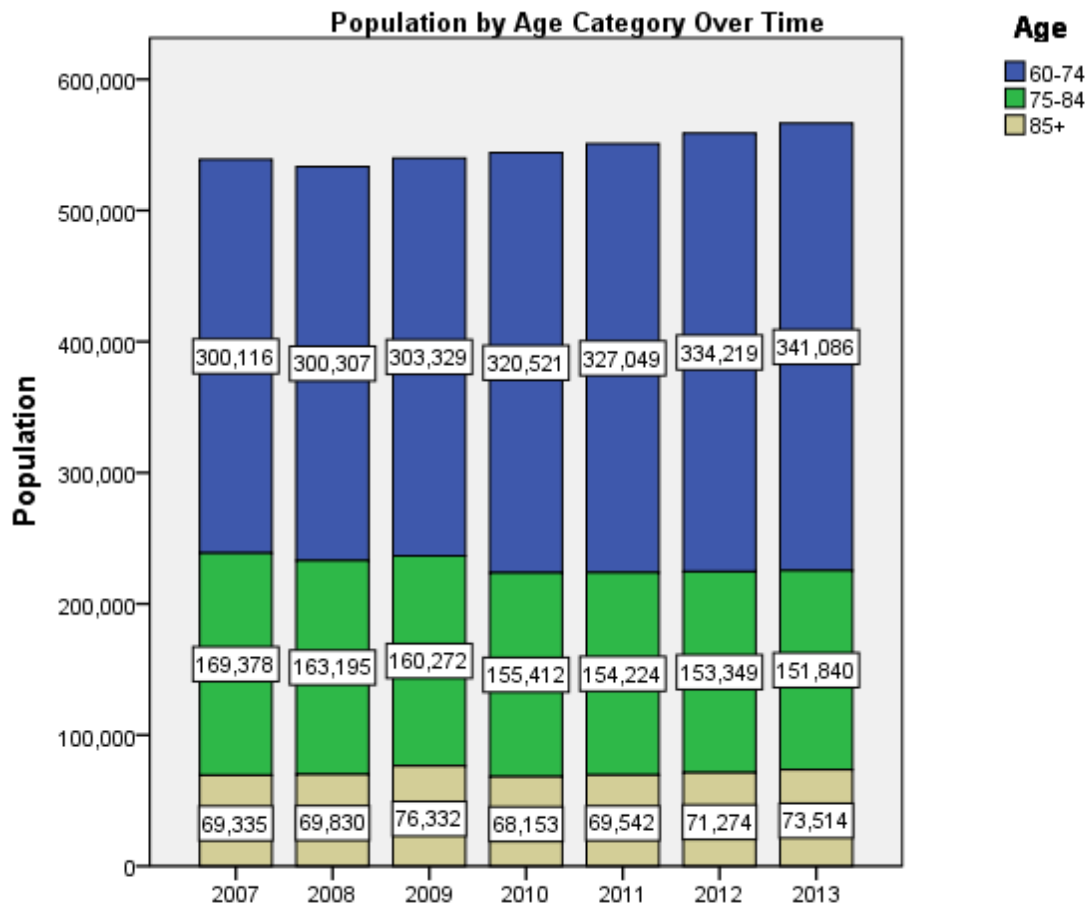
English Proficiency (60+)	
With Limited English Proficiency	23,543

2013 Florida PSA Profiles

PSA 9 (Continued)

Cost of Living	
	Annual Expenses ⁸
Single Elders	
Owner without Mortgage	\$20,700
Renter, one bedroom	\$24,098
Owner with Mortgage	\$30,432
Elder Couple	
Owner without Mortgage	\$31,406
Renter, one bedroom	\$34,805
Owner with Mortgage	\$41,138

Note: Wider Opportunities for Women Elder Economic Security Standard™ Index (Elder Index) measures how much income retired older adults require to meet their basic needs—without public or private assistance. The Elder Index measures basic expenses for elders age 65+ living in the community, not in institutions.





2013 Florida PSA Profiles

¹ Total Minorities = (60+ Population) – (White Non-Hispanic 60+)

² OSS beds: Optional State Supplementation beds

³ ECC License: Extended Congregate Care License

⁴ LMH License: Limited Mental Health License

⁵ LNS License: Limited Nursing Services License

⁶ With One Type of Disability: 60+ people who have only one type of disability

⁷ Probable Alzheimer's Cases = (65-74 Population x 0.0136) + (75-84 Population x 0.1822) + (85+ Population x 0.4098)

⁸ Annual expenses include: housing, including utilities, taxes, insurance; food; transportation; health care, based on good health; and miscellaneous.

Sources

- Population: Florida Population by County, Age, Race, Ethnicity and Gender provided by Florida Legislature, Office of Economic and Demographic Research
- Financial Status & Living Situation: Department of Elder Affairs calculations based on Florida Population data and 2007-2011 American Community Survey
- Medically Underserved Population (Data as of 7/18/2014): Florida Department of Health and U.S. Department of Health and Human Services
- Grandparents: Department of Elder Affairs calculations based on Florida Population data and 2007-2011 American Community Survey, Special Tabulation on Aging
- Skilled Nursing Facility Utilization, Adult Day Care, Adult Family Care Home, Ambulatory Surgical Centers, Assisted Living Facilities, Home Health Agencies, Homemakers & Companion Service Companies, Hospitals: Florida Agency for Health Care Administration
- Rural Designation: Based on the definition of Rural Designation by Rural Economic Development Initiative
- Medical Professionals: Florida Department of Health
- Driver's License: Florida Department of Highway Safety & Motor Vehicles
- Food Stamps: Florida Department of Children and Families
- Registered Voters (Data as of 1/31/2014) : Florida Department of State
- Households with Cost Burden Above 30% and income below 50% Area Median Income: The Shimberg Center for Housing Studies
- Median Household Incomes: U.S. Census Bureau: State and County QuickFacts
- Medicaid & Medicare Eligibility and Medicaid Eligibility: Florida Agency for Health Care Administration
- Veterans Demographics: Florida Department of Veterans' Affairs
- Disability Status: Department of Elder Affairs calculations based on Florida Population data and 2009-2011 American Community Survey Data
- Probable Alzheimer's Cases: Department of Elder Affairs calculations based on Florida Population data and Alzheimer's by Age in 2011 Alzheimer's Disease Facts and Figures report at http://www.alz.org/documents_custom/Facts_2011/ALZ_FL.pdf?type=interior_map&facts=undefined&facts=facts
- English Proficiency: Department of Elder Affairs calculations based on Florida Population data and 2007-2011 American Community Survey, Special Tabulation on Aging
- Cost of Living (Data as of 7/18/2014): Wider Opportunities for Women Elder Economic Security Standard™ Index (Elder Index) at <http://www.basiceconomicsecurity.org/EI/>