



2013 Florida PSA Profiles

PSA 8

Population by Age Category		
All Ages	1,610,834	100.0%
Under 60	1,051,142	65.3%
60+	559,692	34.7%
65+	437,421	27.2%
70+	311,390	19.3%
75+	202,134	12.5%
80+	121,192	7.5%
85+	56,933	3.5%

Population by Race (60+)		
White	540,886	96.6%
Non-White	23,523	4.2%
Black	17,882	3.2%
Other Minorities	5,641	1.0%

Population by Ethnicity (60+)		
Total Hispanic	27,079	4.8%
White	25,290	4.5%
Non-White	1,789	0.3%
Total Non-Hispanic	532,613	95.2%
Total Minorities ¹	44,096	7.9%

Population by Gender (60+)		
Population 60+	559,692	34.7%
Male	256,617	45.8%
Female	303,075	54.2%

Financial Status (60+, % 60+)		
Below Poverty Guideline	40,784	7.3%
Below 125% of Poverty Guideline	60,147	10.7%
Minorities Below Poverty Guideline	8,329	1.5%
Minorities Below 125% of Poverty Guideline	11,405	2.0%

Medically Underserved (65+)	
Total Medically Underserved	93,081
Medically Underserved Populations - Living in Areas Defined as Having Medically Underserved Populations	90,411
Medically Underserved Areas - Living in Medically Underserved Areas	2,670

Living Situation (60+)	
Living Alone	119,007
Male	36,386
Female	82,621

Grandparents (60+)	
Total 60+ Living With Own Grandchildren (Under Age 18)	14,895
Grandparent Responsible for Own Grandchildren (Under Age 18)	4,021
Grandparent Not Responsible for Own Grandchildren (Under Age 18)	10,879
60+ Not Living With Own Grandchildren (Under Age 18)	536,410

Skilled Nursing Facility Utilization	
SNF Beds	7,753
Community Beds	7,225
Sheltered Beds	408
Veterans Administration Beds	120
Other Beds	0
SNFs With Beds	78
Community Beds	69
Sheltered Beds	8
Veterans Administration Beds	1
Other Beds	0
SNFs With Community Beds	69
Community Bed Days	2,613,365
Community Patient Days	2,127,675
Medicaid Patient Days	1,203,960
Occupancy Rate	81.4%
Percent Medicaid	56.6%

Adult Day Care	
Facilities	15
Capacity	779

Adult Family Care Homes	
Homes	53
Beds	234

Home Health Agencies	
Agencies	171
Medicaid Certified Agencies	20
Medicare Certified Agencies	86

Homemaker & Companion Service Companies	
Companies	142

Ambulatory Surgical Centers	
Facilities	68
Operating Rooms	159
Recovery Beds	418



2013 Florida PSA Profiles

PSA 8 (Continued)

Rural Designation	
Rural (Yes/No)	N/A

Assisted Living Facilities	
Total Beds	7,680
OSS Beds ²	593
Non-OSS Beds	7,087
Total Facilities	136
Facilities With ECC License ³	32
Facilities With LMH License ⁴	9
Facilities With LNS License ⁵	55

Hospitals	
Hospitals	22
Hospitals With Skilled Nursing Units	0
Hospital Beds	4,876
Skilled Nursing Unit Beds	0

Medical Professionals	
Medical Doctors	
Licensed	3,245
Limited License	29
Critical Need Area License	13
Restricted	0
Medical Faculty Certificate	2
Public Health Certificate	0
Specialties	
Licensed Podiatric Physicians	120
Licensed Osteopathic Physicians	399
Licensed Chiropractic Physicians	382
Registered Nurses	
Licensed Registered Nurses	17,048

Driver's License	
Drivers With Florida Driver's License - All Ages	2,710,365
Drivers With Florida Driver's License - Age 60+	711,409
Percent of Drivers With Florida Driver's License - Age 60+	26.2%

Food Stamps (60+)	
Participants (60+)	22,692
Potentially Eligible	60,147
Food Stamp Participation Rate (60+)	37.7%

Registered Voters	
Registered to Vote in Florida - All Ages	1,002,731
Registered to Vote in Florida - Age 60+	473,398
Percent of Population Registered to Vote in Florida - Age 60+	47.2%

Households With Cost Burden Above 30% and Income Below 50% Area Median Income (65+) (2010)	
Elder Households	263,604
Percent of All Households	11.7%

Median Household Income (All Ages)	
2008-2012	\$43,527

Medicaid & Medicare Eligibility	
Medicaid Eligible - All Ages	235,883
Medicaid Eligible - 60+	31,821
Dual Eligible - All Ages	41,856
Dual Eligible - 60+	28,090

Veterans	
Total	129,987
Age 45-64	39,518
Age 65-84	74,553
Age 85+	15,917

Disability Status (60+)	
With One Type of Disability ⁶	74,860
Hearing	65,169
Vision	22,913
Cognitive	34,753
Ambulatory	87,439
Self-Care	26,081
Independent Living	53,020
With Two or More Disabilities	71,191
With No Disabilities	416,247
Probable Alzheimer's Cases ⁷	52,999

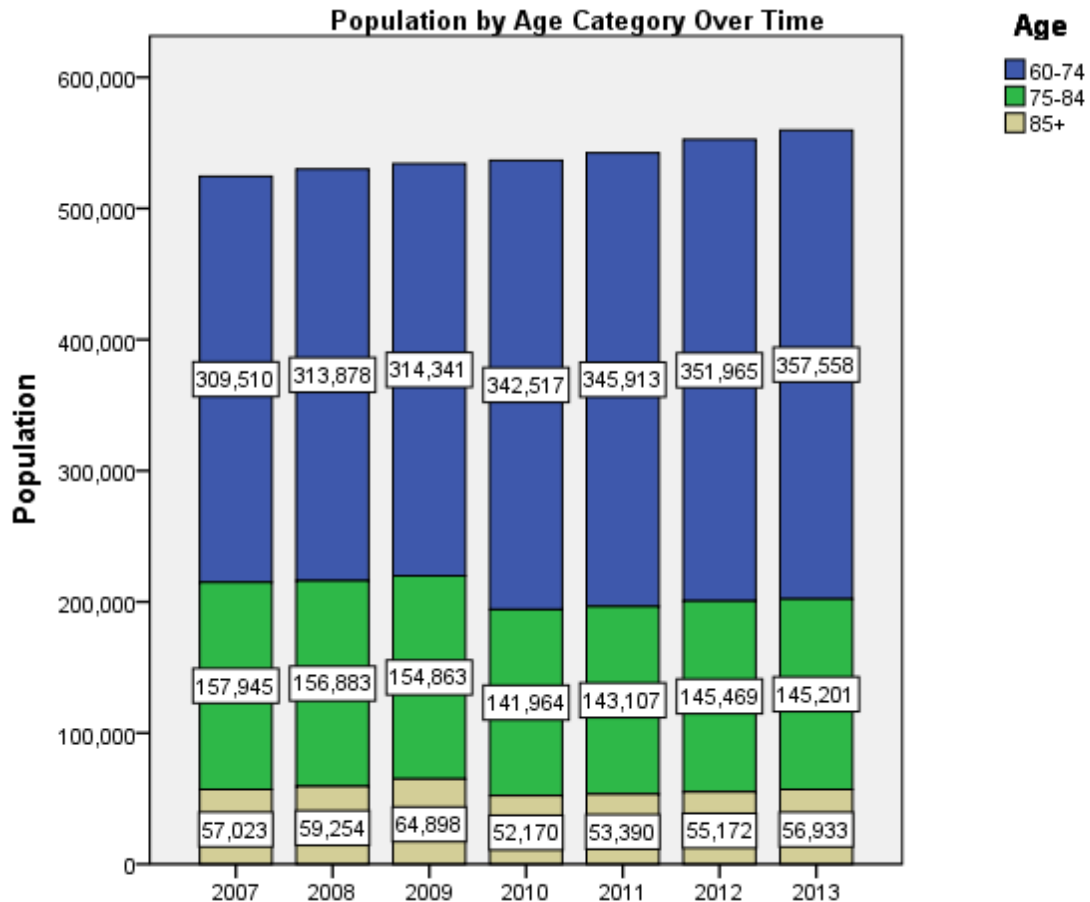
English Proficiency (60+)	
With Limited English Proficiency	16,768

2013 Florida PSA Profiles

PSA 8 (Continued)

Cost of Living	
	Annual Expenses ⁸
Single Elders	
Owner without Mortgage	\$20,499
Renter, one bedroom	\$24,423
Owner with Mortgage	\$29,755
Elder Couple	
Owner without Mortgage	\$31,978
Renter, one bedroom	\$35,902
Owner with Mortgage	\$41,234

Note: Wider Opportunities for Women Elder Economic Security Standard™ Index (Elder Index) measures how much income retired older adults require to meet their basic needs—without public or private assistance. The Elder Index measures basic expenses for elders age 65+ living in the community, not in institutions.





2013 Florida PSA Profiles

¹ Total Minorities = (60+ Population) – (White Non-Hispanic 60+)

² OSS beds: Optional State Supplementation beds

³ ECC License: Extended Congregate Care License

⁴ LMH License: Limited Mental Health License

⁵ LNS License: Limited Nursing Services License

⁶ With One Type of Disability: 60+ people who have only one type of disability

⁷ Probable Alzheimer's Cases = (65-74 Population x 0.0136) + (75-84 Population x 0.1822) + (85+ Population x 0.4098)

⁸ Annual expenses include: housing, including utilities, taxes, insurance; food; transportation; health care, based on good health; and miscellaneous.

Sources

- Population: Florida Population by County, Age, Race, Ethnicity and Gender provided by Florida Legislature, Office of Economic and Demographic Research
- Financial Status & Living Situation: Department of Elder Affairs calculations based on Florida Population data and 2007-2011 American Community Survey
- Medically Underserved Population (Data as of 7/18/2014): Florida Department of Health and U.S. Department of Health and Human Services
- Grandparents: Department of Elder Affairs calculations based on Florida Population data and 2007-2011 American Community Survey, Special Tabulation on Aging
- Skilled Nursing Facility Utilization, Adult Day Care, Adult Family Care Home, Ambulatory Surgical Centers, Assisted Living Facilities, Home Health Agencies, Homemakers & Companion Service Companies, Hospitals: Florida Agency for Health Care Administration
- Rural Designation: Based on the definition of Rural Designation by Rural Economic Development Initiative
- Medical Professionals: Florida Department of Health
- Driver's License: Florida Department of Highway Safety & Motor Vehicles
- Food Stamps: Florida Department of Children and Families
- Registered Voters (Data as of 1/31/2014) : Florida Department of State
- Households with Cost Burden Above 30% and income below 50% Area Median Income: The Shimberg Center for Housing Studies
- Median Household Incomes: U.S. Census Bureau: State and County QuickFacts
- Medicaid & Medicare Eligibility and Medicaid Eligibility: Florida Agency for Health Care Administration
- Veterans Demographics: Florida Department of Veterans' Affairs
- Disability Status: Department of Elder Affairs calculations based on Florida Population data and 2009-2011 American Community Survey Data
- Probable Alzheimer's Cases: Department of Elder Affairs calculations based on Florida Population data and Alzheimer's by Age in 2011 Alzheimer's Disease Facts and Figures report at http://www.alz.org/documents_custom/Facts_2011/ALZ_FL.pdf?type=interior_map&facts=undefined&facts=facts
- English Proficiency: Department of Elder Affairs calculations based on Florida Population data and 2007-2011 American Community Survey, Special Tabulation on Aging
- Cost of Living (Data as of 7/18/2014): Wider Opportunities for Women Elder Economic Security Standard™ Index (Elder Index) at <http://www.basiceconomicsecurity.org/EI/>