



# 2013 Florida PSA Profiles

## PSA 7

Population by Age Category		
All Ages	2,470,837	100.0%
Under 60	2,006,937	81.2%
60+	463,900	18.8%
65+	329,802	13.3%
70+	222,904	9.0%
75+	144,539	5.8%
80+	86,961	3.5%
85+	42,199	1.7%

Population by Race (60+)		
White	390,957	84.3%
Non-White	71,855	15.5%
Black	54,486	11.7%
Other Minorities	17,369	3.7%

Population by Ethnicity (60+)		
Total Hispanic	69,129	14.9%
White	62,015	13.4%
Non-White	7,114	1.5%
Total Non-Hispanic	394,771	85.1%
Total Minorities <sup>1</sup>	134,958	29.1%

Population by Gender (60+)		
Population 60+	463,900	18.8%
Male	209,849	45.2%
Female	254,051	54.8%

Financial Status (60+, % 60+)		
Below Poverty Guideline	40,759	8.8%
Below 125% of Poverty Guideline	62,000	13.4%
Minorities Below Poverty Guideline	20,434	4.4%
Minorities Below 125% of Poverty Guideline	29,663	6.4%

Medically Underserved (65+)		
Total Medically Underserved	90,276	
Medically Underserved Populations - Living in Areas Defined as Having Medically Underserved Populations	54,177	
Medically Underserved Areas - Living in Medically Underserved Areas	36,099	

Living Situation (60+)		
Living Alone	99,470	
Male	30,555	
Female	68,915	

Grandparents (60+)	
Total 60+ Living With Own Grandchildren (Under Age 18)	31,929
Grandparent Responsible for Own Grandchildren (Under Age 18)	8,701
Grandparent Not Responsible for Own Grandchildren (Under Age 18)	23,233
60+ Not Living With Own Grandchildren (Under Age 18)	422,422

Skilled Nursing Facility Utilization	
SNF Beds	9,213
Community Beds	8,955
Sheltered Beds	258
Veterans Administration Beds	0
Other Beds	0
SNFs With Beds	77
Community Beds	72
Sheltered Beds	5
Veterans Administration Beds	0
Other Beds	0
SNFs With Community Beds	72
Community Bed Days	3,268,575
Community Patient Days	2,926,481
Medicaid Patient Days	1,750,964
Occupancy Rate	89.5%
Percent Medicaid	59.8%

Adult Day Care	
Facilities	18
Capacity	913

Adult Family Care Homes	
Homes	49
Beds	229

Home Health Agencies	
Agencies	156
Medicaid Certified Agencies	39
Medicare Certified Agencies	100

Homemaker & Companion Service Companies	
Companies	179

Ambulatory Surgical Centers	
Facilities	52
Operating Rooms	131
Recovery Beds	387



# 2013 Florida PSA Profiles

## PSA 7 (Continued)

Rural Designation	
Rural (Yes/No)	N/A

Assisted Living Facilities	
Total Beds	7,627
OSS Beds <sup>2</sup>	1,072
Non-OSS Beds	6,555
Total Facilities	291
Facilities With ECC License <sup>3</sup>	31
Facilities With LMH License <sup>4</sup>	35
Facilities With LNS License <sup>5</sup>	93

Hospitals	
Hospitals	33
Hospitals With Skilled Nursing Units	0
Hospital Beds	7,133
Skilled Nursing Unit Beds	0

Medical Professionals	
Medical Doctors	
Licensed	5,266
Limited License	10
Critical Need Area License	59
Restricted	0
Medical Faculty Certificate	5
Public Health Certificate	0
Specialties	
Licensed Podiatric Physicians	98
Licensed Osteopathic Physicians	484
Licensed Chiropractic Physicians	516
Registered Nurses	
Licensed Registered Nurses	26,446

Driver's License	
Drivers With Florida Driver's License - All Ages	1,817,976
Drivers With Florida Driver's License - Age 60+	429,792
Percent of Drivers With Florida Driver's License - Age 60+	23.6%

Food Stamps (60+)	
Participants (60+)	39,904
Potentially Eligible	62,000
Food Stamp Participation Rate (60+)	64.4%

Registered Voters	
Registered to Vote in Florida - All Ages	1,499,806
Registered to Vote in Florida - Age 60+	395,222
Percent of Population Registered to Vote in Florida - Age 60+	26.4%

Households With Cost Burden Above 30% and Income Below 50% Area Median Income (65+) (2010)	
Elder Households	191,198
Percent of All Households	16.6%

Median Household Income (All Ages)	
2008-2012	\$50,248

Medicaid & Medicare Eligibility	
Medicaid Eligible - All Ages	441,229
Medicaid Eligible - 60+	56,925
Dual Eligible - All Ages	75,788
Dual Eligible - 60+	50,106

Veterans	
Total	142,191
Age 45-64	71,810
Age 65-84	59,229
Age 85+	11,152

Disability Status (60+)	
With One Type of Disability <sup>6</sup>	68,953
Hearing	51,304
Vision	27,100
Cognitive	37,982
Ambulatory	96,393
Self-Care	32,220
Independent Living	60,422
With Two or More Disabilities	76,664
With No Disabilities	325,195
Probable Alzheimer's Cases <sup>7</sup>	38,468

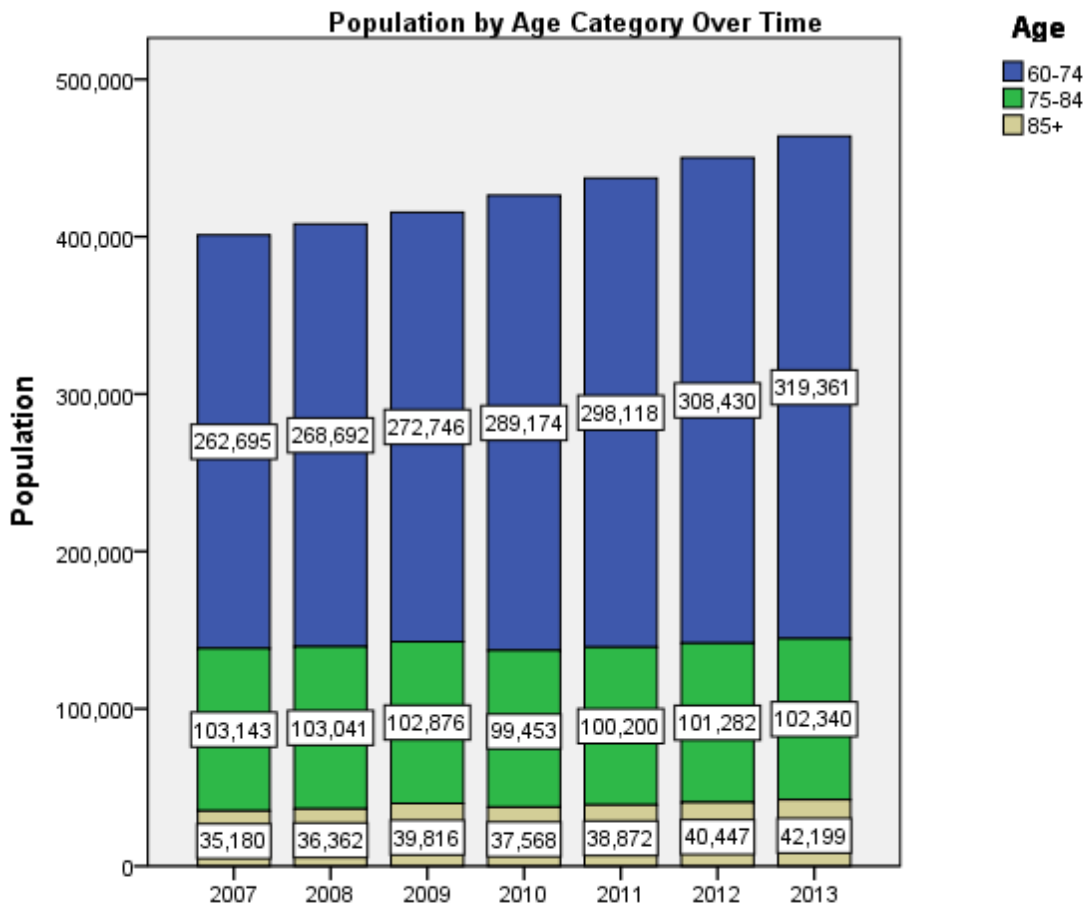
English Proficiency (60+)	
With Limited English Proficiency	31,415

# 2013 Florida PSA Profiles

## PSA 7 (Continued)

Cost of Living	
	Annual Expenses <sup>8</sup>
<b>Single Elders</b>	
Owner without Mortgage	\$18,225
Renter, one bedroom	\$23,532
Owner with Mortgage	\$27,795
<b>Elder Couple</b>	
Owner without Mortgage	\$28,194
Renter, one bedroom	\$33,501
Owner with Mortgage	\$37,764

Note: Wider Opportunities for Women Elder Economic Security Standard™ Index (Elder Index) measures how much income retired older adults require to meet their basic needs—without public or private assistance. The Elder Index measures basic expenses for elders age 65+ living in the community, not in institutions.





# 2013 Florida PSA Profiles

---

<sup>1</sup> Total Minorities = (60+ Population) – (White Non-Hispanic 60+)

<sup>2</sup> OSS beds: Optional State Supplementation beds

<sup>3</sup> ECC License: Extended Congregate Care License

<sup>4</sup> LMH License: Limited Mental Health License

<sup>5</sup> LNS License: Limited Nursing Services License

<sup>6</sup> With One Type of Disability: 60+ people who have only one type of disability

<sup>7</sup> Probable Alzheimer's Cases = (65-74 Population x 0.0136) + (75-84 Population x 0.1822) + (85+ Population x 0.4098)

<sup>8</sup> Annual expenses include: housing, including utilities, taxes, insurance; food; transportation; health care, based on good health; and miscellaneous.

## Sources

- Population: Florida Population by County, Age, Race, Ethnicity and Gender provided by Florida Legislature, Office of Economic and Demographic Research
- Financial Status & Living Situation: Department of Elder Affairs calculations based on Florida Population data and 2007-2011 American Community Survey
- Medically Underserved Population (Data as of 7/18/2014): Florida Department of Health and U.S. Department of Health and Human Services
- Grandparents: Department of Elder Affairs calculations based on Florida Population data and 2007-2011 American Community Survey, Special Tabulation on Aging
- Skilled Nursing Facility Utilization, Adult Day Care, Adult Family Care Home, Ambulatory Surgical Centers, Assisted Living Facilities, Home Health Agencies, Homemakers & Companion Service Companies, Hospitals: Florida Agency for Health Care Administration
- Rural Designation: Based on the definition of Rural Designation by Rural Economic Development Initiative
- Medical Professionals: Florida Department of Health
- Driver's License: Florida Department of Highway Safety & Motor Vehicles
- Food Stamps: Florida Department of Children and Families
- Registered Voters (Data as of 1/31/2014) : Florida Department of State
- Households with Cost Burden Above 30% and income below 50% Area Median Income: The Shimberg Center for Housing Studies
- Median Household Incomes: U.S. Census Bureau: State and County QuickFacts
- Medicaid & Medicare Eligibility and Medicaid Eligibility: Florida Agency for Health Care Administration
- Veterans Demographics: Florida Department of Veterans' Affairs
- Disability Status: Department of Elder Affairs calculations based on Florida Population data and 2009-2011 American Community Survey Data
- Probable Alzheimer's Cases: Department of Elder Affairs calculations based on Florida Population data and Alzheimer's by Age in 2011 Alzheimer's Disease Facts and Figures report at [http://www.alz.org/documents\\_custom/Facts\\_2011/ALZ\\_FL.pdf?type=interior\\_map&facts=undefined&facts=facts](http://www.alz.org/documents_custom/Facts_2011/ALZ_FL.pdf?type=interior_map&facts=undefined&facts=facts)
- English Proficiency: Department of Elder Affairs calculations based on Florida Population data and 2007-2011 American Community Survey, Special Tabulation on Aging
- Cost of Living (Data as of 7/18/2014): Wider Opportunities for Women Elder Economic Security Standard™ Index (Elder Index) at <http://www.basiceconomicsecurity.org/EI/>