



2013 Florida PSA Profiles

PSA 6

Population by Age Category		
All Ages	2,351,014	100.0%
Under 60	1,821,673	77.5%
60+	529,341	22.5%
65+	391,093	16.6%
70+	269,203	11.5%
75+	173,723	7.4%
80+	103,726	4.4%
85+	48,736	2.1%

Population by Race (60+)		
White	471,452	89.1%
Non-White	57,690	10.9%
Black	46,363	8.8%
Other Minorities	11,327	2.1%

Population by Ethnicity (60+)		
Total Hispanic	56,582	10.7%
White	51,651	9.8%
Non-White	4,931	0.9%
Total Non-Hispanic	472,759	89.3%
Total Minorities ¹	109,540	20.7%

Population by Gender (60+)		
Population 60+	529,341	22.5%
Male	240,710	45.5%
Female	288,631	54.5%

Financial Status (60+, % 60+)		
Below Poverty Guideline	48,947	9.2%
Below 125% of Poverty Guideline	75,039	14.2%
Minorities Below Poverty Guideline	18,892	3.6%
Minorities Below 125% of Poverty Guideline	27,323	5.2%

Medically Underserved (65+)	
Total Medically Underserved	108,224
Medically Underserved Populations - Living in Areas Defined as Having Medically Underserved Populations	103,359
Medically Underserved Areas - Living in Medically Underserved Areas	4,865

Living Situation (60+)	
Living Alone	119,698
Male	35,971
Female	83,727

Grandparents (60+)	
Total 60+ Living With Own Grandchildren (Under Age 18)	25,782
Grandparent Responsible for Own Grandchildren (Under Age 18)	7,837
Grandparent Not Responsible for Own Grandchildren (Under Age 18)	17,939
60+ Not Living With Own Grandchildren (Under Age 18)	493,683

Skilled Nursing Facility Utilization	
SNF Beds	9,220
Community Beds	8,768
Sheltered Beds	452
Veterans Administration Beds	0
Other Beds	0
SNFs With Beds	82
Community Beds	74
Sheltered Beds	8
Veterans Administration Beds	0
Other Beds	0
SNFs With Community Beds	74
Community Bed Days	3,200,320
Community Patient Days	2,849,385
Medicaid Patient Days	1,688,023
Occupancy Rate	89.0%
Percent Medicaid	59.2%

Adult Day Care	
Facilities	12
Capacity	557

Adult Family Care Homes	
Homes	62
Beds	268

Home Health Agencies	
Agencies	211
Medicaid Certified Agencies	51
Medicare Certified Agencies	129

Homemaker & Companion Service Companies	
Companies	204

Ambulatory Surgical Centers	
Facilities	47
Operating Rooms	132
Recovery Beds	392



2013 Florida PSA Profiles

PSA 6 (Continued)

Rural Designation	
Rural (Yes/No)	N/A

Assisted Living Facilities	
Total Beds	9,974
OSS Beds ²	2,636
Non-OSS Beds	7,338
Total Facilities	292
Facilities With ECC License ³	31
Facilities With LMH License ⁴	54
Facilities With LNS License ⁵	50

Hospitals	
Hospitals	32
Hospitals With Skilled Nursing Units	1
Hospital Beds	7,105
Skilled Nursing Unit Beds	15

Medical Professionals	
Medical Doctors	
Licensed	5,684
Limited License	11
Critical Need Area License	30
Restricted	0
Medical Faculty Certificate	2
Public Health Certificate	0
Specialties	
Licensed Podiatric Physicians	123
Licensed Osteopathic Physicians	522
Licensed Chiropractic Physicians	503
Registered Nurses	
Licensed Registered Nurses	27,911

Driver's License	
Drivers With Florida Driver's License - All Ages	680,885
Drivers With Florida Driver's License - Age 60+	227,246
Percent of Drivers With Florida Driver's License - Age 60+	33.4%

Food Stamps (60+)	
Participants (60+)	42,632
Potentially Eligible	75,039
Food Stamp Participation Rate (60+)	56.8%

Registered Voters	
Registered to Vote in Florida - All Ages	1,394,245
Registered to Vote in Florida - Age 60+	436,680
Percent of Population Registered to Vote in Florida - Age 60+	31.3%

Households With Cost Burden Above 30% and Income Below 50% Area Median Income (65+) (2010)	
Elder Households	231,252
Percent of All Households	15.6%

Median Household Income (All Ages)	
2008-2012	\$42,486

Medicaid & Medicare Eligibility	
Medicaid Eligible - All Ages	464,741
Medicaid Eligible - 60+	58,902
Dual Eligible - All Ages	80,124
Dual Eligible - 60+	51,861

Veterans	
Total	153,802
Age 45-64	68,853
Age 65-84	71,898
Age 85+	13,051

Disability Status (60+)	
With One Type of Disability ⁶	77,677
Hearing	65,027
Vision	30,271
Cognitive	43,358
Ambulatory	108,159
Self-Care	36,165
Independent Living	66,223
With Two or More Disabilities	88,099
With No Disabilities	369,728
Probable Alzheimer's Cases ⁷	45,712

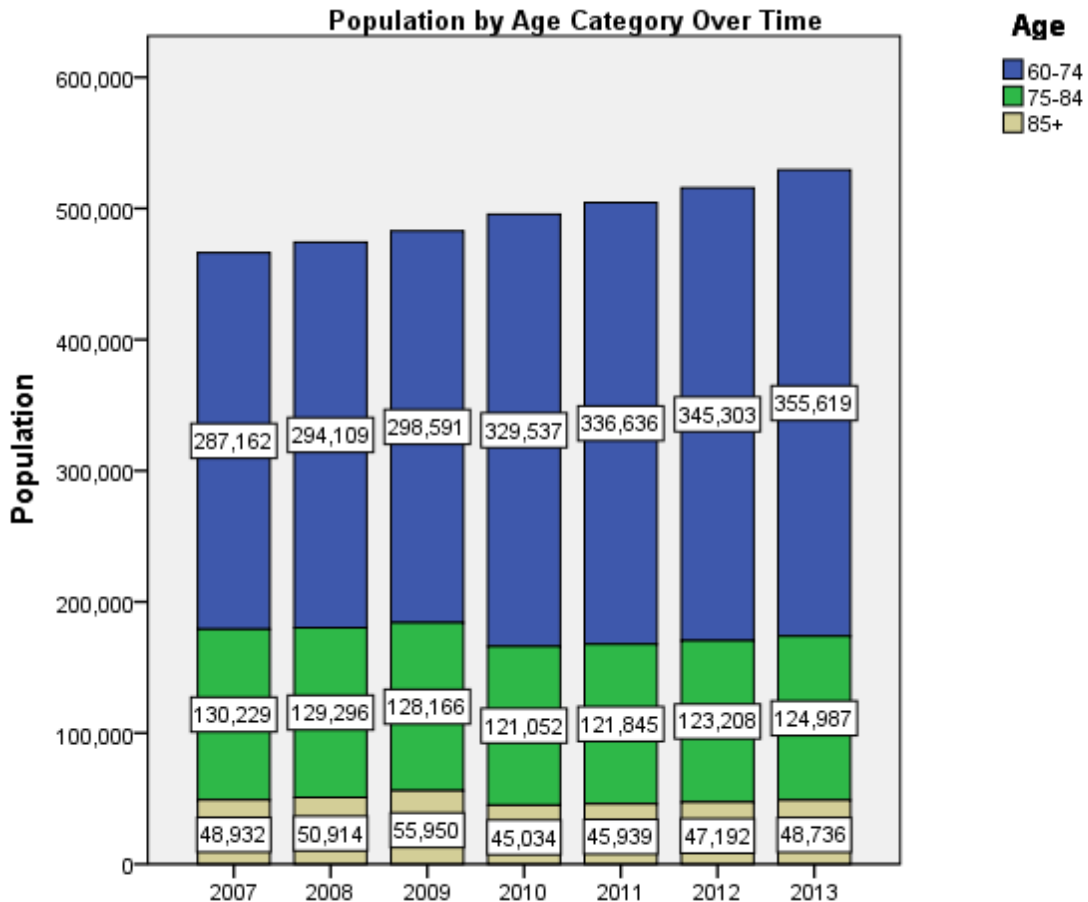
English Proficiency (60+)	
With Limited English Proficiency	24,637

2013 Florida PSA Profiles

PSA 6 (Continued)

Cost of Living	
	Annual Expenses ⁸
Single Elders	
Owner without Mortgage	\$18,463
Renter, one bedroom	\$22,826
Owner with Mortgage	\$26,933
Elder Couple	
Owner without Mortgage	\$28,980
Renter, one bedroom	\$33,343
Owner with Mortgage	\$37,450

Note: Wider Opportunities for Women Elder Economic Security Standard™ Index (Elder Index) measures how much income retired older adults require to meet their basic needs—without public or private assistance. The Elder Index measures basic expenses for elders age 65+ living in the community, not in institutions.





2013 Florida PSA Profiles

¹ Total Minorities = (60+ Population) – (White Non-Hispanic 60+)

² OSS beds: Optional State Supplementation beds

³ ECC License: Extended Congregate Care License

⁴ LMH License: Limited Mental Health License

⁵ LNS License: Limited Nursing Services License

⁶ With One Type of Disability: 60+ people who have only one type of disability

⁷ Probable Alzheimer's Cases = (65-74 Population x 0.0136) + (75-84 Population x 0.1822) + (85+ Population x 0.4098)

⁸ Annual expenses include: housing, including utilities, taxes, insurance; food; transportation; health care, based on good health; and miscellaneous.

Sources

- Population: Florida Population by County, Age, Race, Ethnicity and Gender provided by Florida Legislature, Office of Economic and Demographic Research
- Financial Status & Living Situation: Department of Elder Affairs calculations based on Florida Population data and 2007-2011 American Community Survey
- Medically Underserved Population (Data as of 7/18/2014): Florida Department of Health and U.S. Department of Health and Human Services
- Grandparents: Department of Elder Affairs calculations based on Florida Population data and 2007-2011 American Community Survey, Special Tabulation on Aging
- Skilled Nursing Facility Utilization, Adult Day Care, Adult Family Care Home, Ambulatory Surgical Centers, Assisted Living Facilities, Home Health Agencies, Homemakers & Companion Service Companies, Hospitals: Florida Agency for Health Care Administration
- Rural Designation: Based on the definition of Rural Designation by Rural Economic Development Initiative
- Medical Professionals: Florida Department of Health
- Driver's License: Florida Department of Highway Safety & Motor Vehicles
- Food Stamps: Florida Department of Children and Families
- Registered Voters (Data as of 1/31/2014) : Florida Department of State
- Households with Cost Burden Above 30% and income below 50% Area Median Income: The Shimberg Center for Housing Studies
- Median Household Incomes: U.S. Census Bureau: State and County QuickFacts
- Medicaid & Medicare Eligibility and Medicaid Eligibility: Florida Agency for Health Care Administration
- Veterans Demographics: Florida Department of Veterans' Affairs
- Disability Status: Department of Elder Affairs calculations based on Florida Population data and 2009-2011 American Community Survey Data
- Probable Alzheimer's Cases: Department of Elder Affairs calculations based on Florida Population data and Alzheimer's by Age in 2011 Alzheimer's Disease Facts and Figures report at http://www.alz.org/documents_custom/Facts_2011/ALZ_FL.pdf?type=interior_map&facts=undefined&facts=facts
- English Proficiency: Department of Elder Affairs calculations based on Florida Population data and 2007-2011 American Community Survey, Special Tabulation on Aging
- Cost of Living (Data as of 7/18/2014): Wider Opportunities for Women Elder Economic Security Standard™ Index (Elder Index) at <http://www.basiceconomicsecurity.org/EI/>