



2013 Florida PSA Profiles

PSA 5

Population by Age Category		
All Ages	1,400,176	100.0%
Under 60	993,056	70.9%
60+	407,120	29.1%
65+	306,871	21.9%
70+	216,849	15.5%
75+	146,880	10.5%
80+	93,730	6.7%
85+	48,199	3.4%

Population by Race (60+)		
White	380,622	93.5%
Non-White	24,891	6.1%
Black	17,240	4.2%
Other Minorities	7,651	1.9%

Population by Ethnicity (60+)		
Total Hispanic	15,903	3.9%
White	14,479	3.6%
Non-White	1,424	0.3%
Total Non-Hispanic	391,217	96.1%
Total Minorities ¹	40,977	10.1%

Population by Gender (60+)		
Population 60+	407,120	29.1%
Male	183,875	45.2%
Female	223,245	54.8%

Financial Status (60+, % 60+)		
Below Poverty Guideline	37,610	9.2%
Below 125% of Poverty Guideline	57,484	14.1%
Minorities Below Poverty Guideline	7,084	1.7%
Minorities Below 125% of Poverty Guideline	9,402	2.3%

Medically Underserved (65+)		
Total Medically Underserved	50,811	
Medically Underserved Populations - Living in Areas Defined as Having Medically Underserved Populations	50,811	
Medically Underserved Areas - Living in Medically Underserved Areas	0	

Living Situation (60+)		
Living Alone	113,172	
Male	34,367	
Female	78,805	

Grandparents (60+)	
Total 60+ Living With Own Grandchildren (Under Age 18)	12,058
Grandparent Responsible for Own Grandchildren (Under Age 18)	4,023
Grandparent Not Responsible for Own Grandchildren (Under Age 18)	8,034
60+ Not Living With Own Grandchildren (Under Age 18)	383,552

Skilled Nursing Facility Utilization	
SNF Beds	10,065
Community Beds	9,715
Sheltered Beds	201
Veterans Administration Beds	120
Other Beds	29
SNFs With Beds	95
Community Beds	89
Sheltered Beds	4
Veterans Administration Beds	1
Other Beds	1
SNFs With Community Beds	89
Community Bed Days	3,545,975
Community Patient Days	3,148,622
Medicaid Patient Days	2,011,567
Occupancy Rate	88.8%
Percent Medicaid	63.9%

Adult Day Care	
Facilities	7
Capacity	459

Adult Family Care Homes	
Homes	29
Beds	125

Home Health Agencies	
Agencies	128
Medicaid Certified Agencies	22
Medicare Certified Agencies	76

Homemaker & Companion Service Companies	
Companies	117

Ambulatory Surgical Centers	
Facilities	40
Operating Rooms	110
Recovery Beds	333



2013 Florida PSA Profiles

PSA 5 (Continued)

Rural Designation	
Rural (Yes/No)	N/A

Assisted Living Facilities	
Total Beds	9,590
OSS Beds ²	2,454
Non-OSS Beds	7,136
Total Facilities	228
Facilities With ECC License ³	50
Facilities With LMH License ⁴	45
Facilities With LNS License ⁵	43

Hospitals	
Hospitals	26
Hospitals With Skilled Nursing Units	3
Hospital Beds	5,339
Skilled Nursing Unit Beds	78

Medical Professionals	
Medical Doctors	
Licensed	3,403
Limited License	8
Critical Need Area License	4
Restricted	0
Medical Faculty Certificate	0
Public Health Certificate	0
Specialties	
Licensed Podiatric Physicians	102
Licensed Osteopathic Physicians	603
Licensed Chiropractic Physicians	487
Registered Nurses	
Licensed Registered Nurses	20,834

Driver's License	
Drivers With Florida Driver's License - All Ages	1,094,981
Drivers With Florida Driver's License - Age 60+	349,940
Percent of Drivers With Florida Driver's License - Age 60+	32.0%

Food Stamps (60+)	
Participants (60+)	22,891
Potentially Eligible	57,484
Food Stamp Participation Rate (60+)	39.8%

Registered Voters	
Registered to Vote in Florida - All Ages	909,449
Registered to Vote in Florida - Age 60+	326,295
Percent of Population Registered to Vote in Florida - Age 60+	35.9%

Households With Cost Burden Above 30% and Income Below 50% Area Median Income (65+) (2010)	
Elder Households	197,079
Percent of All Households	16.5%

Median Household Income (All Ages)	
2008-2012	\$44,919

Medicaid & Medicare Eligibility	
Medicaid Eligible - All Ages	222,109
Medicaid Eligible - 60+	37,783
Dual Eligible - All Ages	53,890
Dual Eligible - 60+	34,192

Veterans	
Total	116,853
Age 45-64	48,539
Age 65-84	56,023
Age 85+	12,291

Disability Status (60+)	
With One Type of Disability ⁶	57,839
Hearing	49,114
Vision	20,932
Cognitive	31,878
Ambulatory	82,605
Self-Care	25,645
Independent Living	50,808
With Two or More Disabilities	66,877
With No Disabilities	278,891
Probable Alzheimer's Cases ⁷	39,916

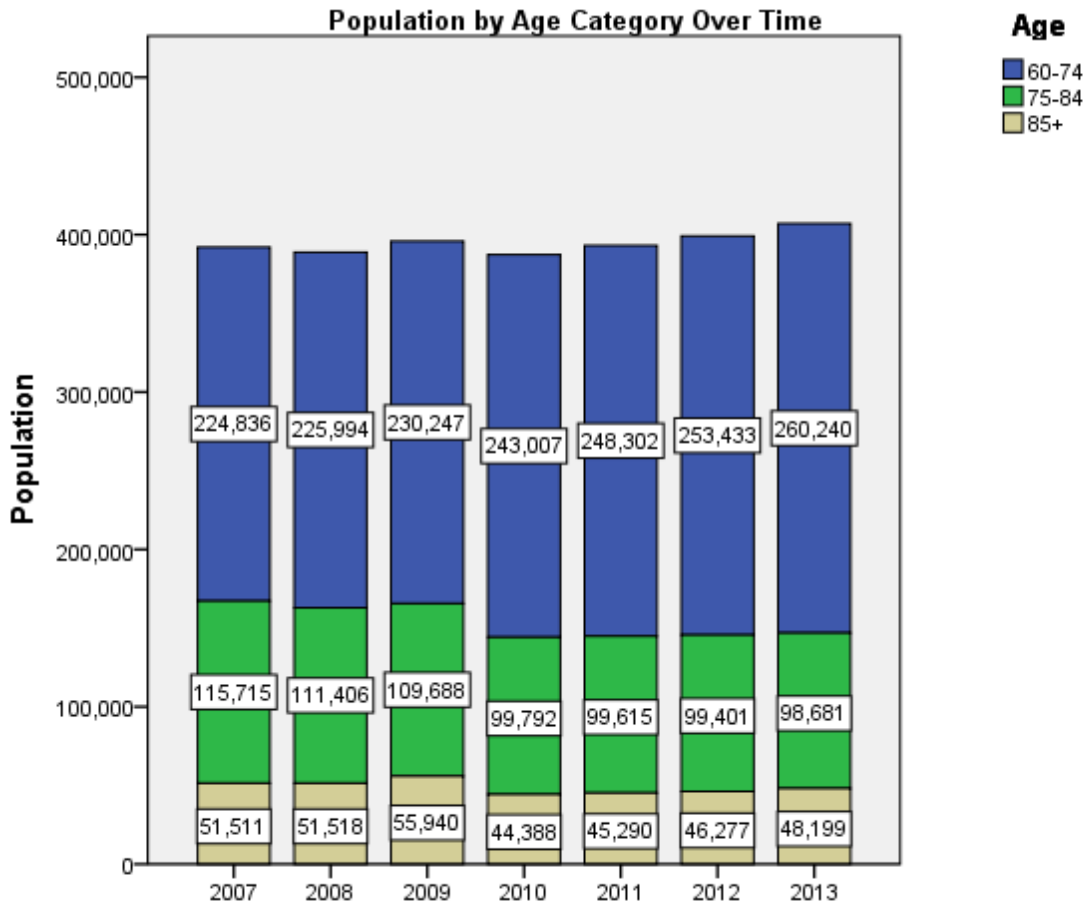
English Proficiency (60+)	
With Limited English Proficiency	9,729

2013 Florida PSA Profiles

PSA 5 (Continued)

Cost of Living	
	Annual Expenses ⁸
Single Elders	
Owner without Mortgage	\$17,442
Renter, one bedroom	\$22,062
Owner with Mortgage	\$25,680
Elder Couple	
Owner without Mortgage	\$26,568
Renter, one bedroom	\$31,188
Owner with Mortgage	\$34,806

Note: Wider Opportunities for Women Elder Economic Security Standard™ Index (Elder Index) measures how much income retired older adults require to meet their basic needs—without public or private assistance. The Elder Index measures basic expenses for elders age 65+ living in the community, not in institutions.





2013 Florida PSA Profiles

¹ Total Minorities = (60+ Population) – (White Non-Hispanic 60+)

² OSS beds: Optional State Supplementation beds

³ ECC License: Extended Congregate Care License

⁴ LMH License: Limited Mental Health License

⁵ LNS License: Limited Nursing Services License

⁶ With One Type of Disability: 60+ people who have only one type of disability

⁷ Probable Alzheimer's Cases = (65-74 Population x 0.0136) + (75-84 Population x 0.1822) + (85+ Population x 0.4098)

⁸ Annual expenses include: housing, including utilities, taxes, insurance; food; transportation; health care, based on good health; and miscellaneous.

Sources

- Population: Florida Population by County, Age, Race, Ethnicity and Gender provided by Florida Legislature, Office of Economic and Demographic Research
- Financial Status & Living Situation: Department of Elder Affairs calculations based on Florida Population data and 2007-2011 American Community Survey
- Medically Underserved Population (Data as of 7/18/2014): Florida Department of Health and U.S. Department of Health and Human Services
- Grandparents: Department of Elder Affairs calculations based on Florida Population data and 2007-2011 American Community Survey, Special Tabulation on Aging
- Skilled Nursing Facility Utilization, Adult Day Care, Adult Family Care Home, Ambulatory Surgical Centers, Assisted Living Facilities, Home Health Agencies, Homemakers & Companion Service Companies, Hospitals: Florida Agency for Health Care Administration
- Rural Designation: Based on the definition of Rural Designation by Rural Economic Development Initiative
- Medical Professionals: Florida Department of Health
- Driver's License: Florida Department of Highway Safety & Motor Vehicles
- Food Stamps: Florida Department of Children and Families
- Registered Voters (Data as of 1/31/2014) : Florida Department of State
- Households with Cost Burden Above 30% and income below 50% Area Median Income: The Shimberg Center for Housing Studies
- Median Household Incomes: U.S. Census Bureau: State and County QuickFacts
- Medicaid & Medicare Eligibility and Medicaid Eligibility: Florida Agency for Health Care Administration
- Veterans Demographics: Florida Department of Veterans' Affairs
- Disability Status: Department of Elder Affairs calculations based on Florida Population data and 2009-2011 American Community Survey Data
- Probable Alzheimer's Cases: Department of Elder Affairs calculations based on Florida Population data and Alzheimer's by Age in 2011 Alzheimer's Disease Facts and Figures report at http://www.alz.org/documents_custom/Facts_2011/ALZ_FL.pdf?type=interior_map&facts=undefined&facts=facts
- English Proficiency: Department of Elder Affairs calculations based on Florida Population data and 2007-2011 American Community Survey, Special Tabulation on Aging
- Cost of Living (Data as of 7/18/2014): Wider Opportunities for Women Elder Economic Security Standard™ Index (Elder Index) at <http://www.basiceconomicsecurity.org/EI/>