



2013 Florida PSA Profiles

PSA 4

Population by Age Category		
All Ages	1,968,822	100.0%
Under 60	1,527,201	77.6%
60+	441,621	22.4%
65+	316,670	16.1%
70+	212,733	10.8%
75+	136,671	6.9%
80+	82,717	4.2%
85+	40,165	2.0%

Population by Race (60+)		
White	380,908	86.3%
Non-White	61,513	13.9%
Black	50,502	11.4%
Other Minorities	11,011	2.5%

Population by Ethnicity (60+)		
Total Hispanic	18,775	4.3%
White	16,469	3.7%
Non-White	2,306	0.5%
Total Non-Hispanic	422,846	95.7%
Total Minorities ¹	77,182	17.5%

Population by Gender (60+)		
Population 60+	441,621	22.4%
Male	199,673	45.2%
Female	241,948	54.8%

Financial Status (60+, % 60+)		
Below Poverty Guideline	38,094	8.6%
Below 125% of Poverty Guideline	57,260	13.0%
Minorities Below Poverty Guideline	12,319	2.8%
Minorities Below 125% of Poverty Guideline	16,737	3.8%

Medically Underserved (65+)	
Total Medically Underserved	75,928
Medically Underserved Populations - Living in Areas Defined as Having Medically Underserved Populations	55,855
Medically Underserved Areas - Living in Medically Underserved Areas	20,073

Living Situation (60+)	
Living Alone	102,850
Male	30,992
Female	71,858

Grandparents (60+)	
Total 60+ Living With Own Grandchildren (Under Age 18)	21,752
Grandparent Responsible for Own Grandchildren (Under Age 18)	8,048
Grandparent Not Responsible for Own Grandchildren (Under Age 18)	13,693
60+ Not Living With Own Grandchildren (Under Age 18)	409,754

Skilled Nursing Facility Utilization	
SNF Beds	9,841
Community Beds	9,323
Sheltered Beds	278
Veterans Administration Beds	240
Other Beds	0
SNFs With Beds	92
Community Beds	83
Sheltered Beds	7
Veterans Administration Beds	2
Other Beds	0
SNFs With Community Beds	83
Community Bed Days	3,402,895
Community Patient Days	3,006,811
Medicaid Patient Days	1,836,666
Occupancy Rate	88.4%
Percent Medicaid	61.1%

Adult Day Care	
Facilities	19
Capacity	580

Adult Family Care Homes	
Homes	39
Beds	177

Home Health Agencies	
Agencies	154
Medicaid Certified Agencies	32
Medicare Certified Agencies	94

Homemaker & Companion Service Companies	
Companies	184

Ambulatory Surgical Centers	
Facilities	39
Operating Rooms	108
Recovery Beds	291



2013 Florida PSA Profiles

PSA 4 (Continued)

Rural Designation	
Rural (Yes/No)	N/A

Assisted Living Facilities	
Total Beds	5,809
OSS Beds ²	1,226
Non-OSS Beds	4,583
Total Facilities	208
Facilities With ECC License ³	24
Facilities With LMH License ⁴	49
Facilities With LNS License ⁵	44

Hospitals	
Hospitals	27
Hospitals With Skilled Nursing Units	2
Hospital Beds	5,910
Skilled Nursing Unit Beds	92

Medical Professionals	
Medical Doctors	
Licensed	4,761
Limited License	9
Critical Need Area License	11
Restricted	0
Medical Faculty Certificate	3
Public Health Certificate	1
Specialties	
Licensed Podiatric Physicians	97
Licensed Osteopathic Physicians	405
Licensed Chiropractic Physicians	495
Registered Nurses	
Licensed Registered Nurses	26,598

Driver's License	
Drivers With Florida Driver's License - All Ages	1,004,791
Drivers With Florida Driver's License - Age 60+	295,140
Percent of Drivers With Florida Driver's License - Age 60+	29.4%

Food Stamps (60+)	
Participants (60+)	26,060
Potentially Eligible	57,260
Food Stamp Participation Rate (60+)	45.5%

Registered Voters	
Registered to Vote in Florida - All Ages	1,294,786
Registered to Vote in Florida - Age 60+	393,557
Percent of Population Registered to Vote in Florida - Age 60+	30.4%

Households With Cost Burden Above 30% and Income Below 50% Area Median Income (65+) (2010)	
Elder Households	195,246
Percent of All Households	15.6%

Median Household Income (All Ages)	
2008-2012	\$52,681

Medicaid & Medicare Eligibility	
Medicaid Eligible - All Ages	428,486
Medicaid Eligible - 60+	45,443
Dual Eligible - All Ages	63,177
Dual Eligible - 60+	39,561

Veterans	
Total	174,973
Age 45-64	87,948
Age 65-84	74,246
Age 85+	12,778

Disability Status (60+)	
With One Type of Disability ⁶	64,110
Hearing	51,224
Vision	25,038
Cognitive	35,325
Ambulatory	88,658
Self-Care	30,737
Independent Living	54,842
With Two or More Disabilities	72,746
With No Disabilities	310,982
Probable Alzheimer's Cases ⁷	36,500

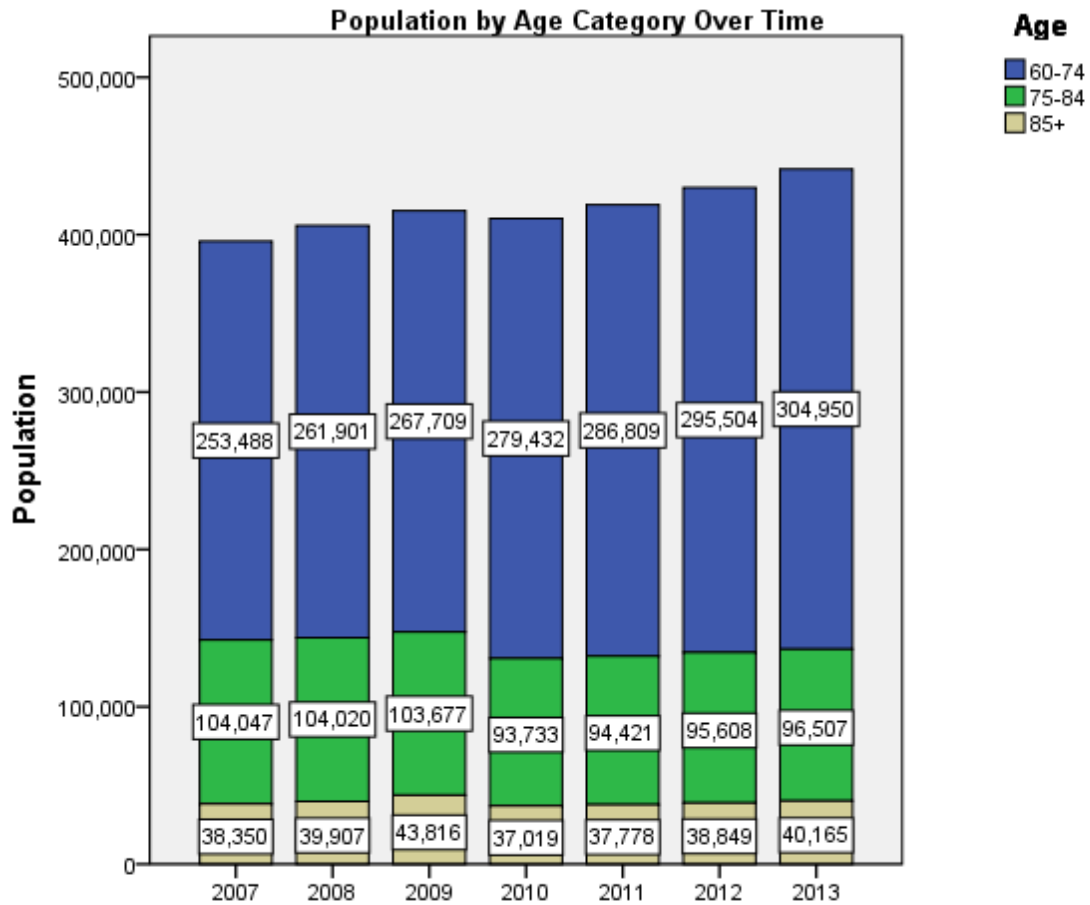
English Proficiency (60+)	
With Limited English Proficiency	9,291

2013 Florida PSA Profiles

PSA 4 (Continued)

Cost of Living	
	Annual Expenses ⁸
Single Elders	
Owner without Mortgage	\$19,200
Renter, one bedroom	\$23,635
Owner with Mortgage	\$28,857
Elder Couple	
Owner without Mortgage	\$30,542
Renter, one bedroom	\$34,977
Owner with Mortgage	\$40,198

Note: Wider Opportunities for Women Elder Economic Security Standard™ Index (Elder Index) measures how much income retired older adults require to meet their basic needs—without public or private assistance. The Elder Index measures basic expenses for elders age 65+ living in the community, not in institutions.





2013 Florida PSA Profiles

¹ Total Minorities = (60+ Population) – (White Non-Hispanic 60+)

² OSS beds: Optional State Supplementation beds

³ ECC License: Extended Congregate Care License

⁴ LMH License: Limited Mental Health License

⁵ LNS License: Limited Nursing Services License

⁶ With One Type of Disability: 60+ people who have only one type of disability

⁷ Probable Alzheimer's Cases = (65-74 Population x 0.0136) + (75-84 Population x 0.1822) + (85+ Population x 0.4098)

⁸ Annual expenses include: housing, including utilities, taxes, insurance; food; transportation; health care, based on good health; and miscellaneous.

Sources

- Population: Florida Population by County, Age, Race, Ethnicity and Gender provided by Florida Legislature, Office of Economic and Demographic Research
- Financial Status & Living Situation: Department of Elder Affairs calculations based on Florida Population data and 2007-2011 American Community Survey
- Medically Underserved Population (Data as of 7/18/2014): Florida Department of Health and U.S. Department of Health and Human Services
- Grandparents: Department of Elder Affairs calculations based on Florida Population data and 2007-2011 American Community Survey, Special Tabulation on Aging
- Skilled Nursing Facility Utilization, Adult Day Care, Adult Family Care Home, Ambulatory Surgical Centers, Assisted Living Facilities, Home Health Agencies, Homemakers & Companion Service Companies, Hospitals: Florida Agency for Health Care Administration
- Rural Designation: Based on the definition of Rural Designation by Rural Economic Development Initiative
- Medical Professionals: Florida Department of Health
- Driver's License: Florida Department of Highway Safety & Motor Vehicles
- Food Stamps: Florida Department of Children and Families
- Registered Voters (Data as of 1/31/2014) : Florida Department of State
- Households with Cost Burden Above 30% and income below 50% Area Median Income: The Shimberg Center for Housing Studies
- Median Household Incomes: U.S. Census Bureau: State and County QuickFacts
- Medicaid & Medicare Eligibility and Medicaid Eligibility: Florida Agency for Health Care Administration
- Veterans Demographics: Florida Department of Veterans' Affairs
- Disability Status: Department of Elder Affairs calculations based on Florida Population data and 2009-2011 American Community Survey Data
- Probable Alzheimer's Cases: Department of Elder Affairs calculations based on Florida Population data and Alzheimer's by Age in 2011 Alzheimer's Disease Facts and Figures report at http://www.alz.org/documents_custom/Facts_2011/ALZ_FL.pdf?type=interior_map&facts=undefined&facts=facts
- English Proficiency: Department of Elder Affairs calculations based on Florida Population data and 2007-2011 American Community Survey, Special Tabulation on Aging
- Cost of Living (Data as of 7/18/2014): Wider Opportunities for Women Elder Economic Security Standard™ Index (Elder Index) at <http://www.basiceconomicsecurity.org/EI/>