



2013 Florida PSA Profiles

PSA 3

Population by Age Category		
All Ages	1,628,997	100.0%
Under 60	1,120,987	68.8%
60+	508,010	31.2%
65+	389,967	23.9%
70+	270,937	16.6%
75+	170,000	10.4%
80+	97,745	6.0%
85+	44,321	2.7%

Population by Race (60+)		
White	471,785	92.9%
Non-White	37,188	7.3%
Black	30,467	6.0%
Other Minorities	6,721	1.3%

Population by Ethnicity (60+)		
Total Hispanic	19,347	3.8%
White	17,610	3.5%
Non-White	1,737	0.3%
Total Non-Hispanic	488,663	96.2%
Total Minorities ¹	53,835	10.6%

Population by Gender (60+)		
Population 60+	508,010	31.2%
Male	234,822	46.2%
Female	273,188	53.8%

Financial Status (60+, % 60+)		
Below Poverty Guideline	42,835	8.4%
Below 125% of Poverty Guideline	66,267	13.0%
Minorities Below Poverty Guideline	8,658	1.7%
Minorities Below 125% of Poverty Guideline	12,925	2.5%

Medically Underserved (65+)	
Total Medically Underserved	152,812
Medically Underserved Populations - Living in Areas Defined as Having Medically Underserved Populations	119,046
Medically Underserved Areas - Living in Medically Underserved Areas	33,766

Living Situation (60+)	
Living Alone	105,880
Male	32,708
Female	73,172

Grandparents (60+)	
Total 60+ Living With Own Grandchildren (Under Age 18)	16,820
Grandparent Responsible for Own Grandchildren (Under Age 18)	5,675
Grandparent Not Responsible for Own Grandchildren (Under Age 18)	11,134
60+ Not Living With Own Grandchildren (Under Age 18)	481,063

Skilled Nursing Facility Utilization	
SNF Beds	7,682
Community Beds	7,558
Sheltered Beds	124
Veterans Administration Beds	0
Other Beds	0
SNFs With Beds	67
Community Beds	65
Sheltered Beds	2
Veterans Administration Beds	0
Other Beds	0
SNFs With Community Beds	65
Community Bed Days	2,755,550
Community Patient Days	2,461,362
Medicaid Patient Days	1,532,474
Occupancy Rate	89.3%
Percent Medicaid	62.3%

Adult Day Care	
Facilities	9
Capacity	1,340

Adult Family Care Homes	
Homes	42
Beds	191

Home Health Agencies	
Agencies	149
Medicaid Certified Agencies	33
Medicare Certified Agencies	108

Homemaker & Companion Service Companies	
Companies	171

Ambulatory Surgical Centers	
Facilities	42
Operating Rooms	91
Recovery Beds	296

2013 Florida PSA Profiles

PSA 3 (Continued)

Rural Designation	
Rural (Yes/No)	N/A

Assisted Living Facilities	
Total Beds	5,482
OSS Beds ²	590
Non-OSS Beds	4,892
Total Facilities	140
Facilities With ECC License ³	27
Facilities With LMH License ⁴	25
Facilities With LNS License ⁵	43

Hospitals	
Hospitals	34
Hospitals With Skilled Nursing Units	0
Hospital Beds	4,675
Skilled Nursing Unit Beds	0

Medical Professionals	
Medical Doctors	
Licensed	3,659
Limited License	6
Critical Need Area License	50
Restricted	0
Medical Faculty Certificate	2
Public Health Certificate	0
Specialties	
Licensed Podiatric Physicians	83
Licensed Osteopathic Physicians	300
Licensed Chiropractic Physicians	323
Registered Nurses	
Licensed Registered Nurses	21,291

Driver's License	
Drivers With Florida Driver's License - All Ages	1,082,878
Drivers With Florida Driver's License - Age 60+	366,984
Percent of Drivers With Florida Driver's License - Age 60+	33.9%

Food Stamps (60+)	
Participants (60+)	25,036
Potentially Eligible	66,267
Food Stamp Participation Rate (60+)	37.8%

Registered Voters	
Registered to Vote in Florida - All Ages	1,056,851
Registered to Vote in Florida - Age 60+	448,745
Percent of Population Registered to Vote in Florida - Age 60+	42.5%

Households With Cost Burden Above 30% and Income Below 50% Area Median Income (65+) (2010)	
Elder Households	235,686
Percent of All Households	12.4%

Median Household Income (All Ages)	
2008-2012	\$39,654

Medicaid & Medicare Eligibility	
Medicaid Eligible - All Ages	300,296
Medicaid Eligible - 60+	42,297
Dual Eligible - All Ages	61,107
Dual Eligible - 60+	38,262

Veterans	
Total	167,114
Age 45-64	59,770
Age 65-84	90,368
Age 85+	16,980

Disability Status (60+)	
With One Type of Disability ⁶	77,243
Hearing	66,429
Vision	27,294
Cognitive	36,899
Ambulatory	97,792
Self-Care	31,292
Independent Living	56,437
With Two or More Disabilities	78,451
With No Disabilities	343,472
Probable Alzheimer's Cases ⁷	44,064

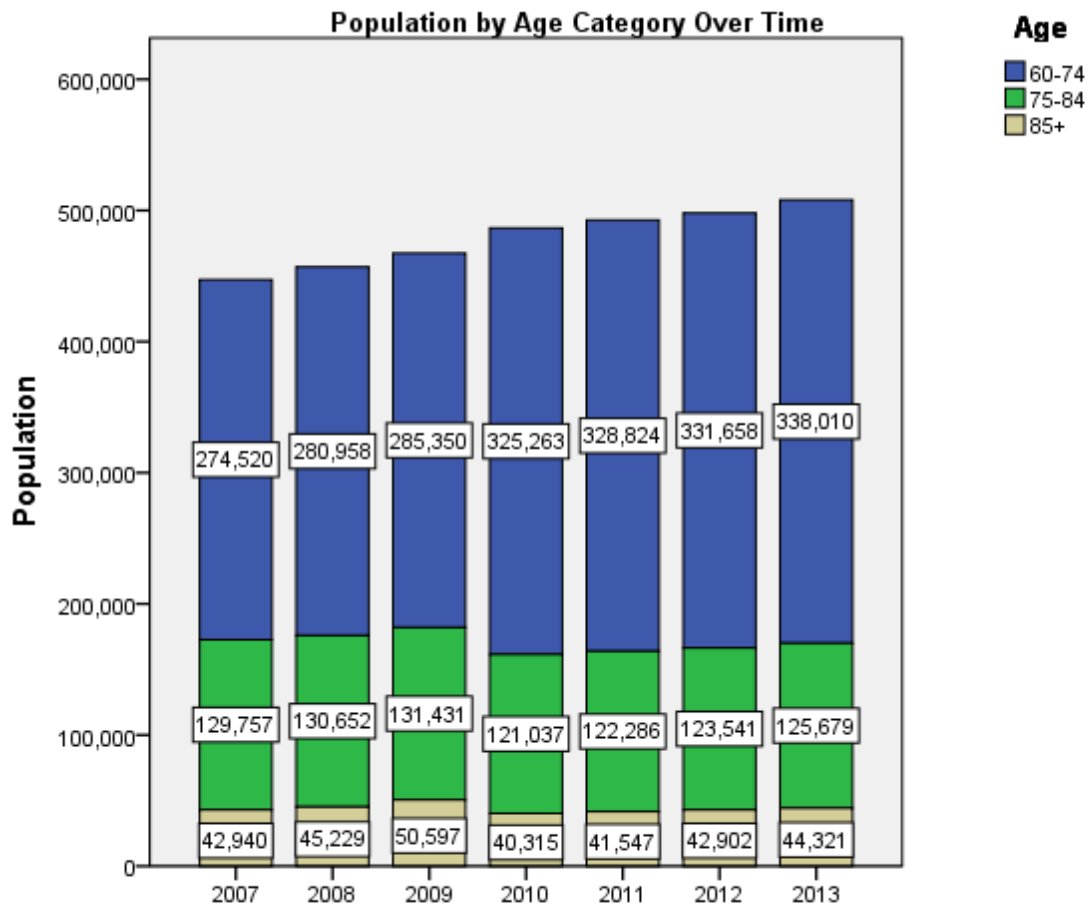
English Proficiency (60+)	
With Limited English Proficiency	7,126

2013 Florida PSA Profiles

PSA 3 (Continued)

Cost of Living	
	Annual Expenses ⁸
Single Elders	
Owner without Mortgage	\$18,923
Renter, one bedroom	\$22,457
Owner with Mortgage	\$27,027
Elder Couple	
Owner without Mortgage	\$30,635
Renter, one bedroom	\$34,170
Owner with Mortgage	\$38,740

Note: Wider Opportunities for Women Elder Economic Security Standard™ Index (Elder Index) measures how much income retired older adults require to meet their basic needs—without public or private assistance. The Elder Index measures basic expenses for elders age 65+ living in the community, not in institutions.





2013 Florida PSA Profiles

¹ Total Minorities = (60+ Population) – (White Non-Hispanic 60+)

² OSS beds: Optional State Supplementation beds

³ ECC License: Extended Congregate Care License

⁴ LMH License: Limited Mental Health License

⁵ LNS License: Limited Nursing Services License

⁶ With One Type of Disability: 60+ people who have only one type of disability

⁷ Probable Alzheimer's Cases = (65-74 Population x 0.0136) + (75-84 Population x 0.1822) + (85+ Population x 0.4098)

⁸ Annual expenses include: housing, including utilities, taxes, insurance; food; transportation; health care, based on good health; and miscellaneous.

Sources

- Population: Florida Population by County, Age, Race, Ethnicity and Gender provided by Florida Legislature, Office of Economic and Demographic Research
- Financial Status & Living Situation: Department of Elder Affairs calculations based on Florida Population data and 2007-2011 American Community Survey
- Medically Underserved Population (Data as of 7/18/2014): Florida Department of Health and U.S. Department of Health and Human Services
- Grandparents: Department of Elder Affairs calculations based on Florida Population data and 2007-2011 American Community Survey, Special Tabulation on Aging
- Skilled Nursing Facility Utilization, Adult Day Care, Adult Family Care Home, Ambulatory Surgical Centers, Assisted Living Facilities, Home Health Agencies, Homemakers & Companion Service Companies, Hospitals: Florida Agency for Health Care Administration
- Rural Designation: Based on the definition of Rural Designation by Rural Economic Development Initiative
- Medical Professionals: Florida Department of Health
- Driver's License: Florida Department of Highway Safety & Motor Vehicles
- Food Stamps: Florida Department of Children and Families
- Registered Voters (Data as of 1/31/2014) : Florida Department of State
- Households with Cost Burden Above 30% and income below 50% Area Median Income: The Shimberg Center for Housing Studies
- Median Household Incomes: U.S. Census Bureau: State and County QuickFacts
- Medicaid & Medicare Eligibility and Medicaid Eligibility: Florida Agency for Health Care Administration
- Veterans Demographics: Florida Department of Veterans' Affairs
- Disability Status: Department of Elder Affairs calculations based on Florida Population data and 2009-2011 American Community Survey Data
- Probable Alzheimer's Cases: Department of Elder Affairs calculations based on Florida Population data and Alzheimer's by Age in 2011 Alzheimer's Disease Facts and Figures report at http://www.alz.org/documents_custom/Facts_2011/ALZ_FL.pdf?type=interior_map&facts=undefined&facts=facts
- English Proficiency: Department of Elder Affairs calculations based on Florida Population data and 2007-2011 American Community Survey, Special Tabulation on Aging
- Cost of Living (Data as of 7/18/2014): Wider Opportunities for Women Elder Economic Security Standard™ Index (Elder Index) at <http://www.basiceconomicsecurity.org/EI/>