



2013 Florida PSA Profiles

PSA 2

Population by Age Category		
All Ages	729,420	100.0%
Under 60	586,429	80.4%
60+	142,991	19.6%
65+	100,377	13.8%
70+	66,152	9.1%
75+	41,580	5.7%
80+	24,456	3.4%
85+	11,534	1.6%

Population by Race (60+)		
White	117,858	82.4%
Non-White	25,231	17.6%
Black	22,831	16.0%
Other Minorities	2,400	1.7%

Population by Ethnicity (60+)		
Total Hispanic	2,462	1.7%
White	2,155	1.5%
Non-White	307	0.2%
Total Non-Hispanic	140,529	98.3%
Total Minorities ¹	27,288	19.1%

Population by Gender (60+)		
Population 60+	142,991	19.6%
Male	65,985	46.1%
Female	77,006	53.9%

Financial Status (60+, % 60+)		
Below Poverty Guideline	14,669	10.3%
Below 125% of Poverty Guideline	21,820	15.3%
Minorities Below Poverty Guideline	5,033	3.5%
Minorities Below 125% of Poverty Guideline	7,451	5.2%

Medically Underserved (65+)		
Total Medically Underserved	53,977	
Medically Underserved Populations - Living in Areas Defined as Having Medically Underserved Populations	17,185	
Medically Underserved Areas - Living in Medically Underserved Areas	36,793	

Living Situation (60+)		
Living Alone	34,797	
Male	10,079	
Female	24,718	

Grandparents (60+)	
Total 60+ Living With Own Grandchildren (Under Age 18)	6,355
Grandparent Responsible for Own Grandchildren (Under Age 18)	2,772
Grandparent Not Responsible for Own Grandchildren (Under Age 18)	3,571
60+ Not Living With Own Grandchildren (Under Age 18)	131,678

Skilled Nursing Facility Utilization	
SNF Beds	3,901
Community Beds	3,709
Sheltered Beds	72
Veterans Administration Beds	120
Other Beds	0
SNFs With Beds	35
Community Beds	33
Sheltered Beds	1
Veterans Administration Beds	1
Other Beds	0
SNFs With Community Beds	33
Community Bed Days	1,353,785
Community Patient Days	1,206,685
Medicaid Patient Days	847,874
Occupancy Rate	89.1%
Percent Medicaid	70.3%

Adult Day Care	
Facilities	3
Capacity	134

Adult Family Care Homes	
Homes	9
Beds	43

Home Health Agencies	
Agencies	43
Medicaid Certified Agencies	16
Medicare Certified Agencies	28

Homemaker & Companion Service Companies	
Companies	65

Ambulatory Surgical Centers	
Facilities	18
Operating Rooms	41
Recovery Beds	127



2013 Florida PSA Profiles

PSA 2 (Continued)

Rural Designation	
Rural (Yes/No)	N/A

Assisted Living Facilities	
Total Beds	1,614
OSS Beds ²	662
Non-OSS Beds	952
Total Facilities	44
Facilities With ECC License ³	9
Facilities With LMH License ⁴	22
Facilities With LNS License ⁵	18

Hospitals	
Hospitals	21
Hospitals With Skilled Nursing Units	2
Hospital Beds	2,226
Skilled Nursing Unit Beds	147

Medical Professionals	
Medical Doctors	
Licensed	1,241
Limited License	4
Critical Need Area License	25
Restricted	0
Medical Faculty Certificate	1
Public Health Certificate	0
Specialties	
Licensed Podiatric Physicians	22
Licensed Osteopathic Physicians	72
Licensed Chiropractic Physicians	106
Registered Nurses	
Licensed Registered Nurses	7,691

Driver's License	
Drivers With Florida Driver's License - All Ages	1,938,575
Drivers With Florida Driver's License - Age 60+	551,638
Percent of Drivers With Florida Driver's License - Age 60+	28.5%

Food Stamps (60+)	
Participants (60+)	8,959
Potentially Eligible	21,820
Food Stamp Participation Rate (60+)	41.1%

Registered Voters	
Registered to Vote in Florida - All Ages	459,864
Registered to Vote in Florida - Age 60+	126,486
Percent of Population Registered to Vote in Florida - Age 60+	27.5%

Households With Cost Burden Above 30% and Income Below 50% Area Median Income (65+) (2010)	
Elder Households	64,089
Percent of All Households	16.8%

Median Household Income (All Ages)	
2008-2012	\$39,533

Medicaid & Medicare Eligibility	
Medicaid Eligible - All Ages	131,573
Medicaid Eligible - 60+	16,894
Dual Eligible - All Ages	24,463
Dual Eligible - 60+	14,989

Veterans	
Total	53,831
Age 45-64	28,124
Age 65-84	22,000
Age 85+	3,706

Disability Status (60+)	
With One Type of Disability ⁶	17,096
Hearing	15,584
Vision	6,734
Cognitive	10,477
Ambulatory	25,645
Self-Care	8,721
Independent Living	15,179
With Two or More Disabilities	21,773
With No Disabilities	79,850
Probable Alzheimer's Cases ⁷	11,003

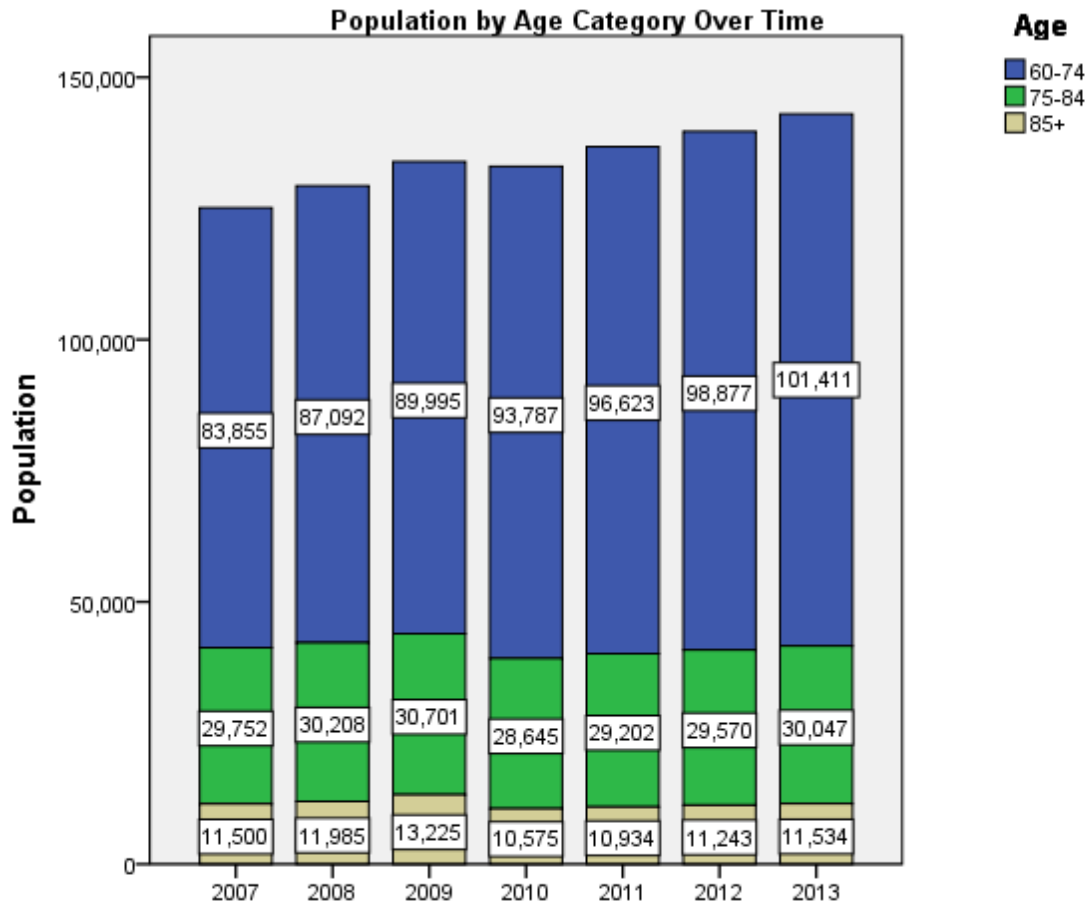
English Proficiency (60+)	
With Limited English Proficiency	1,385

2013 Florida PSA Profiles

PSA 2 (Continued)

Cost of Living	
	Annual Expenses ⁸
Single Elders	
Owner without Mortgage	\$19,000
Renter, one bedroom	\$22,419
Owner with Mortgage	\$27,631
Elder Couple	
Owner without Mortgage	\$30,830
Renter, one bedroom	\$34,248
Owner with Mortgage	\$39,460

Note: Wider Opportunities for Women Elder Economic Security Standard™ Index (Elder Index) measures how much income retired older adults require to meet their basic needs—without public or private assistance. The Elder Index measures basic expenses for elders age 65+ living in the community, not in institutions.





2013 Florida PSA Profiles

¹ Total Minorities = (60+ Population) – (White Non-Hispanic 60+)

² OSS beds: Optional State Supplementation beds

³ ECC License: Extended Congregate Care License

⁴ LMH License: Limited Mental Health License

⁵ LNS License: Limited Nursing Services License

⁶ With One Type of Disability: 60+ people who have only one type of disability

⁷ Probable Alzheimer's Cases = (65-74 Population x 0.0136) + (75-84 Population x 0.1822) + (85+ Population x 0.4098)

⁸ Annual expenses include: housing, including utilities, taxes, insurance; food; transportation; health care, based on good health; and miscellaneous.

Sources

- Population: Florida Population by County, Age, Race, Ethnicity and Gender provided by Florida Legislature, Office of Economic and Demographic Research
- Financial Status & Living Situation: Department of Elder Affairs calculations based on Florida Population data and 2007-2011 American Community Survey
- Medically Underserved Population (Data as of 7/18/2014): Florida Department of Health and U.S. Department of Health and Human Services
- Grandparents: Department of Elder Affairs calculations based on Florida Population data and 2007-2011 American Community Survey, Special Tabulation on Aging
- Skilled Nursing Facility Utilization, Adult Day Care, Adult Family Care Home, Ambulatory Surgical Centers, Assisted Living Facilities, Home Health Agencies, Homemakers & Companion Service Companies, Hospitals: Florida Agency for Health Care Administration
- Rural Designation: Based on the definition of Rural Designation by Rural Economic Development Initiative
- Medical Professionals: Florida Department of Health
- Driver's License: Florida Department of Highway Safety & Motor Vehicles
- Food Stamps: Florida Department of Children and Families
- Registered Voters (Data as of 1/31/2014) : Florida Department of State
- Households with Cost Burden Above 30% and income below 50% Area Median Income: The Shimberg Center for Housing Studies
- Median Household Incomes: U.S. Census Bureau: State and County QuickFacts
- Medicaid & Medicare Eligibility and Medicaid Eligibility: Florida Agency for Health Care Administration
- Veterans Demographics: Florida Department of Veterans' Affairs
- Disability Status: Department of Elder Affairs calculations based on Florida Population data and 2009-2011 American Community Survey Data
- Probable Alzheimer's Cases: Department of Elder Affairs calculations based on Florida Population data and Alzheimer's by Age in 2011 Alzheimer's Disease Facts and Figures report at http://www.alz.org/documents_custom/Facts_2011/ALZ_FL.pdf?type=interior_map&facts=undefined&facts=facts
- English Proficiency: Department of Elder Affairs calculations based on Florida Population data and 2007-2011 American Community Survey, Special Tabulation on Aging
- Cost of Living (Data as of 7/18/2014): Wider Opportunities for Women Elder Economic Security Standard™ Index (Elder Index) at <http://www.basiceconomicsecurity.org/EI/>