



# 2013 Florida PSA Profiles

## PSA 11

Population by Age Category		
All Ages	2,655,935	100.0%
Under 60	2,122,323	79.9%
60+	533,612	20.1%
65+	391,969	14.8%
70+	276,558	10.4%
75+	183,350	6.9%
80+	110,114	4.1%
85+	52,581	2.0%

Population by Race (60+)		
White	441,497	82.7%
Non-White	91,011	17.1%
Black	82,254	15.4%
Other Minorities	8,757	1.6%

Population by Ethnicity (60+)		
Total Hispanic	346,567	64.9%
White	332,072	62.2%
Non-White	14,495	2.7%
Total Non-Hispanic	187,045	35.1%
Total Minorities <sup>1</sup>	424,187	79.5%

Population by Gender (60+)		
Population 60+	533,612	20.1%
Male	232,159	43.5%
Female	301,453	56.5%

Financial Status (60+, % 60+)		
Below Poverty Guideline	103,160	19.3%
Below 125% of Poverty Guideline	143,780	26.9%
Minorities Below Poverty Guideline	93,509	17.5%
Minorities Below 125% of Poverty Guideline	128,920	24.2%

Medically Underserved (65+)	
Total Medically Underserved	125,081
Medically Underserved Populations - Living in Areas Defined as Having Medically Underserved Populations	111,594
Medically Underserved Areas - Living in Medically Underserved Areas	13,487

Living Situation (60+)	
Living Alone	106,396
Male	34,066
Female	72,330

Grandparents (60+)	
Total 60+ Living With Own Grandchildren (Under Age 18)	52,095
Grandparent Responsible for Own Grandchildren (Under Age 18)	9,344
Grandparent Not Responsible for Own Grandchildren (Under Age 18)	42,757
60+ Not Living With Own Grandchildren (Under Age 18)	468,618

Skilled Nursing Facility Utilization	
SNF Beds	8,746
Community Beds	8,696
Sheltered Beds	50
Veterans Administration Beds	0
Other Beds	0
SNFs With Beds	59
Community Beds	57
Sheltered Beds	2
Veterans Administration Beds	0
Other Beds	0
SNFs With Community Beds	57
Community Bed Days	3,128,900
Community Patient Days	2,724,345
Medicaid Patient Days	1,756,892
Occupancy Rate	87.1%
Percent Medicaid	64.5%

Adult Day Care	
Facilities	96
Capacity	5,231

Adult Family Care Homes	
Homes	17
Beds	82

Home Health Agencies	
Agencies	521
Medicaid Certified Agencies	181
Medicare Certified Agencies	448

Homemaker & Companion Service Companies	
Companies	170

Ambulatory Surgical Centers	
Facilities	29
Operating Rooms	83
Recovery Beds	245



# 2013 Florida PSA Profiles

## PSA 11 (Continued)

Rural Designation	
Rural (Yes/No)	N/A

Assisted Living Facilities	
Total Beds	9,751
OSS Beds <sup>2</sup>	8,038
Non-OSS Beds	1,713
Total Facilities	891
Facilities With ECC License <sup>3</sup>	55
Facilities With LMH License <sup>4</sup>	596
Facilities With LNS License <sup>5</sup>	364

Hospitals	
Hospitals	38
Hospitals With Skilled Nursing Units	2
Hospital Beds	9,437
Skilled Nursing Unit Beds	37

Medical Professionals	
Medical Doctors	
Licensed	7,440
Limited License	1
Critical Need Area License	59
Restricted	0
Medical Faculty Certificate	21
Public Health Certificate	2
Specialties	
Licensed Podiatric Physicians	215
Licensed Osteopathic Physicians	445
Licensed Chiropractic Physicians	394
Registered Nurses	
Licensed Registered Nurses	23,269

Driver's License	
Drivers With Florida Driver's License - All Ages	194,974
Drivers With Florida Driver's License - Age 60+	72,084
Percent of Drivers With Florida Driver's License - Age 60+	37.0%

Food Stamps (60+)	
Participants (60+)	156,738
Potentially Eligible	143,780
Food Stamp Participation Rate (60+)	109.0%

Registered Voters	
Registered to Vote in Florida - All Ages	1,326,346
Registered to Vote in Florida - Age 60+	403,100
Percent of Population Registered to Vote in Florida - Age 60+	30.4%

Households With Cost Burden Above 30% and Income Below 50% Area Median Income (65+) (2010)	
Elder Households	206,020
Percent of All Households	26.9%

Median Household Income (All Ages)	
2008-2012	\$48,441

Medicaid & Medicare Eligibility	
Medicaid Eligible - All Ages	646,390
Medicaid Eligible - 60+	182,364
Dual Eligible - All Ages	183,674
Dual Eligible - 60+	159,385

Veterans	
Total	51,271
Age 45-64	27,483
Age 65-84	20,327
Age 85+	3,461

Disability Status (60+)	
With One Type of Disability <sup>6</sup>	66,096
Hearing	48,179
Vision	36,676
Cognitive	63,538
Ambulatory	114,207
Self-Care	50,907
Independent Living	83,920
With Two or More Disabilities	102,116
With No Disabilities	374,296
Probable Alzheimer's Cases <sup>7</sup>	48,222

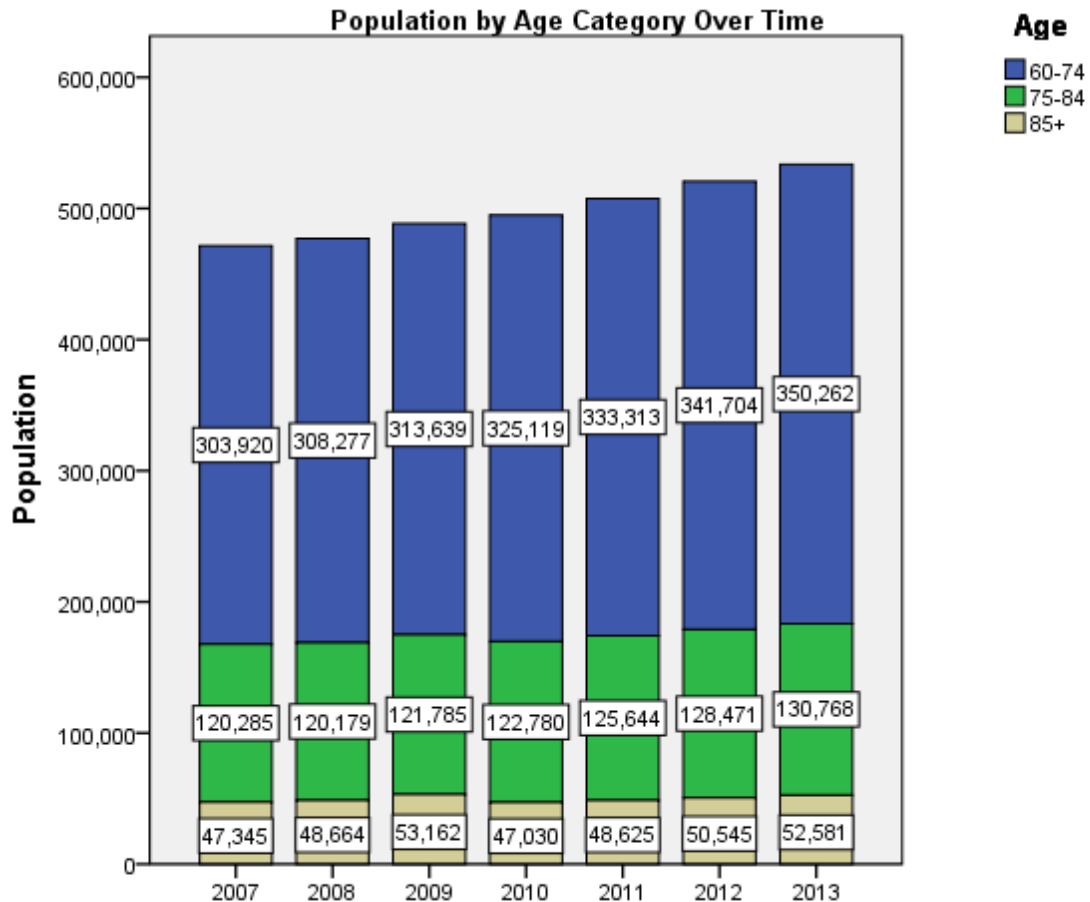
English Proficiency (60+)	
With Limited English Proficiency	218,053

# 2013 Florida PSA Profiles

## PSA 11 (Continued)

Cost of Living	
	Annual Expenses <sup>8</sup>
<b>Single Elders</b>	
Owner without Mortgage	\$20,574
Renter, one bedroom	\$26,154
Owner with Mortgage	\$34,236
<b>Elder Couple</b>	
Owner without Mortgage	\$30,354
Renter, one bedroom	\$35,934
Owner with Mortgage	\$44,016

Note: Wider Opportunities for Women Elder Economic Security Standard™ Index (Elder Index) measures how much income retired older adults require to meet their basic needs—without public or private assistance. The Elder Index measures basic expenses for elders age 65+ living in the community, not in institutions.





# 2013 Florida PSA Profiles

---

<sup>1</sup> Total Minorities = (60+ Population) – (White Non-Hispanic 60+)

<sup>2</sup> OSS beds: Optional State Supplementation beds

<sup>3</sup> ECC License: Extended Congregate Care License

<sup>4</sup> LMH License: Limited Mental Health License

<sup>5</sup> LNS License: Limited Nursing Services License

<sup>6</sup> With One Type of Disability: 60+ people who have only one type of disability

<sup>7</sup> Probable Alzheimer's Cases = (65-74 Population x 0.0136) + (75-84 Population x 0.1822) + (85+ Population x 0.4098)

<sup>8</sup> Annual expenses include: housing, including utilities, taxes, insurance; food; transportation; health care, based on good health; and miscellaneous.

## Sources

- Population: Florida Population by County, Age, Race, Ethnicity and Gender provided by Florida Legislature, Office of Economic and Demographic Research
- Financial Status & Living Situation: Department of Elder Affairs calculations based on Florida Population data and 2007-2011 American Community Survey
- Medically Underserved Population (Data as of 7/18/2014): Florida Department of Health and U.S. Department of Health and Human Services
- Grandparents: Department of Elder Affairs calculations based on Florida Population data and 2007-2011 American Community Survey, Special Tabulation on Aging
- Skilled Nursing Facility Utilization, Adult Day Care, Adult Family Care Home, Ambulatory Surgical Centers, Assisted Living Facilities, Home Health Agencies, Homemakers & Companion Service Companies, Hospitals: Florida Agency for Health Care Administration
- Rural Designation: Based on the definition of Rural Designation by Rural Economic Development Initiative
- Medical Professionals: Florida Department of Health
- Driver's License: Florida Department of Highway Safety & Motor Vehicles
- Food Stamps: Florida Department of Children and Families
- Registered Voters (Data as of 1/31/2014) : Florida Department of State
- Households with Cost Burden Above 30% and income below 50% Area Median Income: The Shimberg Center for Housing Studies
- Median Household Incomes: U.S. Census Bureau: State and County QuickFacts
- Medicaid & Medicare Eligibility and Medicaid Eligibility: Florida Agency for Health Care Administration
- Veterans Demographics: Florida Department of Veterans' Affairs
- Disability Status: Department of Elder Affairs calculations based on Florida Population data and 2009-2011 American Community Survey Data
- Probable Alzheimer's Cases: Department of Elder Affairs calculations based on Florida Population data and Alzheimer's by Age in 2011 Alzheimer's Disease Facts and Figures report at [http://www.alz.org/documents\\_custom/Facts\\_2011/ALZ\\_FL.pdf?type=interior\\_map&facts=undefined&facts=facts](http://www.alz.org/documents_custom/Facts_2011/ALZ_FL.pdf?type=interior_map&facts=undefined&facts=facts)
- English Proficiency: Department of Elder Affairs calculations based on Florida Population data and 2007-2011 American Community Survey, Special Tabulation on Aging
- Cost of Living (Data as of 7/18/2014): Wider Opportunities for Women Elder Economic Security Standard™ Index (Elder Index) at <http://www.basiceconomicsecurity.org/EI/>