



# 2013 Florida PSA Profiles

## PSA 10

Population by Age Category		
All Ages	1,784,715	100.0%
Under 60	1,412,459	79.1%
60+	372,256	20.9%
65+	269,777	15.1%
70+	188,367	10.6%
75+	128,288	7.2%
80+	83,641	4.7%
85+	45,167	2.5%

Population by Race (60+)		
White	295,405	79.4%
Non-White	76,655	20.6%
Black	65,815	17.7%
Other Minorities	10,840	2.9%

Population by Ethnicity (60+)		
Total Hispanic	64,888	17.4%
White	60,106	16.1%
Non-White	4,782	1.3%
Total Non-Hispanic	307,368	82.6%
Total Minorities <sup>1</sup>	136,957	36.8%

Population by Gender (60+)		
Population 60+	372,256	20.9%
Male	165,291	44.4%
Female	206,965	55.6%

Financial Status (60+, % 60+)		
Below Poverty Guideline	44,467	11.9%
Below 125% of Poverty Guideline	65,069	17.5%
Minorities Below Poverty Guideline	22,818	6.1%
Minorities Below 125% of Poverty Guideline	31,526	8.5%

Medically Underserved (65+)		
Total Medically Underserved		40,637
Medically Underserved Populations - Living in Areas Defined as Having Medically Underserved Populations		40,637
Medically Underserved Areas - Living in Medically Underserved Areas		0

Living Situation (60+)		
Living Alone		103,235
Male		33,279
Female		69,956

Grandparents (60+)	
Total 60+ Living With Own Grandchildren (Under Age 18)	25,318
Grandparent Responsible for Own Grandchildren (Under Age 18)	5,631
Grandparent Not Responsible for Own Grandchildren (Under Age 18)	19,682
60+ Not Living With Own Grandchildren (Under Age 18)	340,917

Skilled Nursing Facility Utilization	
SNF Beds	4,552
Community Beds	4,229
Sheltered Beds	167
Veterans Administration Beds	120
Other Beds	36
SNFs With Beds	39
Community Beds	35
Sheltered Beds	2
Veterans Administration Beds	1
Other Beds	1
SNFs With Community Beds	35
Community Bed Days	1,543,585
Community Patient Days	1,265,681
Medicaid Patient Days	784,658
Occupancy Rate	82.0%
Percent Medicaid	62.0%

Adult Day Care	
Facilities	18
Capacity	1,132

Adult Family Care Homes	
Homes	23
Beds	110

Home Health Agencies	
Agencies	243
Medicaid Certified Agencies	78
Medicare Certified Agencies	148

Homemaker & Companion Service Companies	
Companies	171

Ambulatory Surgical Centers	
Facilities	25
Operating Rooms	79
Recovery Beds	266



# 2013 Florida PSA Profiles

## PSA 10 (Continued)

Rural Designation	
Rural (Yes/No)	N/A

Assisted Living Facilities	
Total Beds	7,928
OSS Beds <sup>2</sup>	1,451
Non-OSS Beds	6,477
Total Facilities	292
Facilities With ECC License <sup>3</sup>	23
Facilities With LMH License <sup>4</sup>	45
Facilities With LNS License <sup>5</sup>	36

Hospitals	
Hospitals	24
Hospitals With Skilled Nursing Units	0
Hospital Beds	6,168
Skilled Nursing Unit Beds	0

Medical Professionals	
Medical Doctors	
Licensed	4,543
Limited License	4
Critical Need Area License	22
Restricted	0
Medical Faculty Certificate	1
Public Health Certificate	0
Specialties	
Licensed Podiatric Physicians	204
Licensed Osteopathic Physicians	732
Licensed Chiropractic Physicians	635
Registered Nurses	
Licensed Registered Nurses	23,392

Driver's License	
Drivers With Florida Driver's License - All Ages	1,395,803
Drivers With Florida Driver's License - Age 60+	318,824
Percent of Drivers With Florida Driver's License - Age 60+	22.8%

Food Stamps (60+)	
Participants (60+)	40,172
Potentially Eligible	65,069
Food Stamp Participation Rate (60+)	61.7%

Registered Voters	
Registered to Vote in Florida - All Ages	1,094,966
Registered to Vote in Florida - Age 60+	311,522
Percent of Population Registered to Vote in Florida - Age 60+	28.5%

Households With Cost Burden Above 30% and Income Below 50% Area Median Income (65+) (2010)	
Elder Households	168,164
Percent of All Households	22.1%

Median Household Income (All Ages)	
2008-2012	\$51,603

Medicaid & Medicare Eligibility	
Medicaid Eligible - All Ages	399,974
Medicaid Eligible - 60+	55,528
Dual Eligible - All Ages	62,571
Dual Eligible - 60+	47,214

Veterans	
Total	68,984
Age 45-64	31,494
Age 65-84	30,198
Age 85+	7,292

Disability Status (60+)	
With One Type of Disability <sup>6</sup>	51,620
Hearing	39,914
Vision	24,060
Cognitive	34,448
Ambulatory	81,212
Self-Care	29,048
Independent Living	53,570
With Two or More Disabilities	67,704
With No Disabilities	256,557
Probable Alzheimer's Cases <sup>7</sup>	35,586

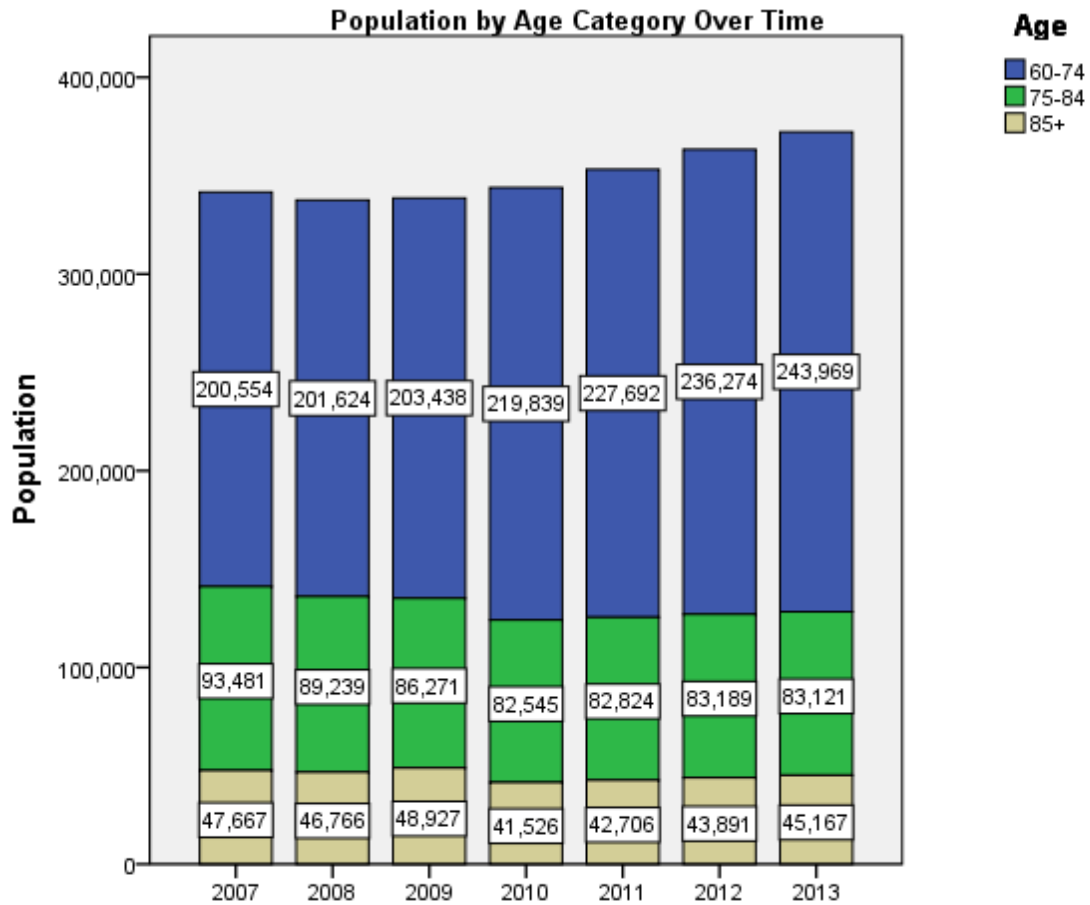
English Proficiency (60+)	
With Limited English Proficiency	40,398

# 2013 Florida PSA Profiles

## PSA 10 (Continued)

Cost of Living	
	Annual Expenses <sup>8</sup>
<b>Single Elders</b>	
Owner without Mortgage	\$17,808
Renter, one bedroom	\$24,312
Owner with Mortgage	\$27,348
<b>Elder Couple</b>	
Owner without Mortgage	\$25,620
Renter, one bedroom	\$32,124
Owner with Mortgage	\$35,160

Note: Wider Opportunities for Women Elder Economic Security Standard™ Index (Elder Index) measures how much income retired older adults require to meet their basic needs—without public or private assistance. The Elder Index measures basic expenses for elders age 65+ living in the community, not in institutions.





# 2013 Florida PSA Profiles

---

<sup>1</sup> Total Minorities = (60+ Population) – (White Non-Hispanic 60+)

<sup>2</sup> OSS beds: Optional State Supplementation beds

<sup>3</sup> ECC License: Extended Congregate Care License

<sup>4</sup> LMH License: Limited Mental Health License

<sup>5</sup> LNS License: Limited Nursing Services License

<sup>6</sup> With One Type of Disability: 60+ people who have only one type of disability

<sup>7</sup> Probable Alzheimer's Cases = (65-74 Population x 0.0136) + (75-84 Population x 0.1822) + (85+ Population x 0.4098)

<sup>8</sup> Annual expenses include: housing, including utilities, taxes, insurance; food; transportation; health care, based on good health; and miscellaneous.

## Sources

- Population: Florida Population by County, Age, Race, Ethnicity and Gender provided by Florida Legislature, Office of Economic and Demographic Research
- Financial Status & Living Situation: Department of Elder Affairs calculations based on Florida Population data and 2007-2011 American Community Survey
- Medically Underserved Population (Data as of 7/18/2014): Florida Department of Health and U.S. Department of Health and Human Services
- Grandparents: Department of Elder Affairs calculations based on Florida Population data and 2007-2011 American Community Survey, Special Tabulation on Aging
- Skilled Nursing Facility Utilization, Adult Day Care, Adult Family Care Home, Ambulatory Surgical Centers, Assisted Living Facilities, Home Health Agencies, Homemakers & Companion Service Companies, Hospitals: Florida Agency for Health Care Administration
- Rural Designation: Based on the definition of Rural Designation by Rural Economic Development Initiative
- Medical Professionals: Florida Department of Health
- Driver's License: Florida Department of Highway Safety & Motor Vehicles
- Food Stamps: Florida Department of Children and Families
- Registered Voters (Data as of 1/31/2014) : Florida Department of State
- Households with Cost Burden Above 30% and income below 50% Area Median Income: The Shimberg Center for Housing Studies
- Median Household Incomes: U.S. Census Bureau: State and County QuickFacts
- Medicaid & Medicare Eligibility and Medicaid Eligibility: Florida Agency for Health Care Administration
- Veterans Demographics: Florida Department of Veterans' Affairs
- Disability Status: Department of Elder Affairs calculations based on Florida Population data and 2009-2011 American Community Survey Data
- Probable Alzheimer's Cases: Department of Elder Affairs calculations based on Florida Population data and Alzheimer's by Age in 2011 Alzheimer's Disease Facts and Figures report at [http://www.alz.org/documents\\_custom/Facts\\_2011/ALZ\\_FL.pdf?type=interior\\_map&facts=undefined&facts=facts](http://www.alz.org/documents_custom/Facts_2011/ALZ_FL.pdf?type=interior_map&facts=undefined&facts=facts)
- English Proficiency: Department of Elder Affairs calculations based on Florida Population data and 2007-2011 American Community Survey, Special Tabulation on Aging
- Cost of Living (Data as of 7/18/2014): Wider Opportunities for Women Elder Economic Security Standard™ Index (Elder Index) at <http://www.basiceconomicsecurity.org/EI/>