



2013 Florida PSA Profiles

PSA 1

Population by Age Category		
All Ages	704,565	100.0%
Under 60	557,065	79.1%
60+	147,500	20.9%
65+	105,348	15.0%
70+	70,743	10.0%
75+	44,759	6.4%
80+	25,687	3.6%
85+	11,792	1.7%

Population by Race (60+)		
White	128,603	87.2%
Non-White	19,004	12.9%
Black	14,337	9.7%
Other Minorities	4,667	3.2%

Population by Ethnicity (60+)		
Total Hispanic	2,904	2.0%
White	2,495	1.7%
Non-White	409	0.3%
Total Non-Hispanic	144,596	98.0%
Total Minorities ¹	21,392	14.5%

Population by Gender (60+)		
Population 60+	147,500	20.9%
Male	67,500	45.8%
Female	80,000	54.2%

Financial Status (60+, % 60+)		
Below Poverty Guideline	12,229	8.3%
Below 125% of Poverty Guideline	17,883	12.1%
Minorities Below Poverty Guideline	3,720	2.5%
Minorities Below 125% of Poverty Guideline	5,152	3.5%

Medically Underserved (65+)		
Total Medically Underserved	28,765	
Medically Underserved Populations - Living in Areas Defined as Having Medically Underserved Populations	18,997	
Medically Underserved Areas - Living in Medically Underserved Areas	9,768	

Living Situation (60+)		
Living Alone	33,650	
Male	10,677	
Female	22,973	

Grandparents (60+)	
Total 60+ Living With Own Grandchildren (Under Age 18)	7,500
Grandparent Responsible for Own Grandchildren (Under Age 18)	3,056
Grandparent Not Responsible for Own Grandchildren (Under Age 18)	4,438
60+ Not Living With Own Grandchildren (Under Age 18)	136,835

Skilled Nursing Facility Utilization	
SNF Beds	3,309
Community Beds	3,274
Sheltered Beds	35
Veterans Administration Beds	0
Other Beds	0
SNFs With Beds	28
Community Beds	27
Sheltered Beds	1
Veterans Administration Beds	0
Other Beds	0
SNFs With Community Beds	27
Community Bed Days	1,195,010
Community Patient Days	1,052,436
Medicaid Patient Days	657,472
Occupancy Rate	88.1%
Percent Medicaid	62.5%

Adult Day Care	
Facilities	5
Capacity	152

Adult Family Care Homes	
Homes	5
Beds	22

Home Health Agencies	
Agencies	44
Medicaid Certified Agencies	12
Medicare Certified Agencies	28

Homemaker & Companion Service Companies	
Companies	40

Ambulatory Surgical Centers	
Facilities	15
Operating Rooms	50
Recovery Beds	132



2013 Florida PSA Profiles

PSA 1 (Continued)

Rural Designation	
Rural (Yes/No)	N/A

Assisted Living Facilities	
Total Beds	2,216
OSS Beds ²	545
Non-OSS Beds	1,671
Total Facilities	40
Facilities With ECC License ³	10
Facilities With LMH License ⁴	9
Facilities With LNS License ⁵	22

Hospitals	
Hospitals	15
Hospitals With Skilled Nursing Units	0
Hospital Beds	2,352
Skilled Nursing Unit Beds	0

Medical Professionals	
Medical Doctors	
Licensed	2,068
Limited License	5
Critical Need Area License	4
Restricted	0
Medical Faculty Certificate	0
Public Health Certificate	0
Specialties	
Licensed Podiatric Physicians	53
Licensed Osteopathic Physicians	217
Licensed Chiropractic Physicians	234
Registered Nurses	
Licensed Registered Nurses	12,396

Driver's License	
Drivers With Florida Driver's License - All Ages	1,216,542
Drivers With Florida Driver's License - Age 60+	273,707
Percent of Drivers With Florida Driver's License - Age 60+	22.5%

Food Stamps (60+)	
Participants (60+)	6,883
Potentially Eligible	17,883
Food Stamp Participation Rate (60+)	38.5%

Registered Voters	
Registered to Vote in Florida - All Ages	476,569
Registered to Vote in Florida - Age 60+	135,943
Percent of Population Registered to Vote in Florida - Age 60+	28.5%

Households With Cost Burden Above 30% and Income Below 50% Area Median Income (65+) (2010)	
Elder Households	69,750
Percent of All Households	14.0%

Median Household Income (All Ages)	
2008-2012	\$49,917

Medicaid & Medicare Eligibility	
Medicaid Eligible - All Ages	116,243
Medicaid Eligible - 60+	13,081
Dual Eligible - All Ages	20,510
Dual Eligible - 60+	11,603

Veterans	
Total	72,287
Age 45-64	40,596
Age 65-84	27,106
Age 85+	4,586

Disability Status (60+)	
With One Type of Disability ⁶	23,330
Hearing	19,513
Vision	8,679
Cognitive	11,708
Ambulatory	33,909
Self-Care	10,847
Independent Living	19,822
With Two or More Disabilities	26,618
With No Disabilities	98,559
Probable Alzheimer's Cases ⁷	11,666

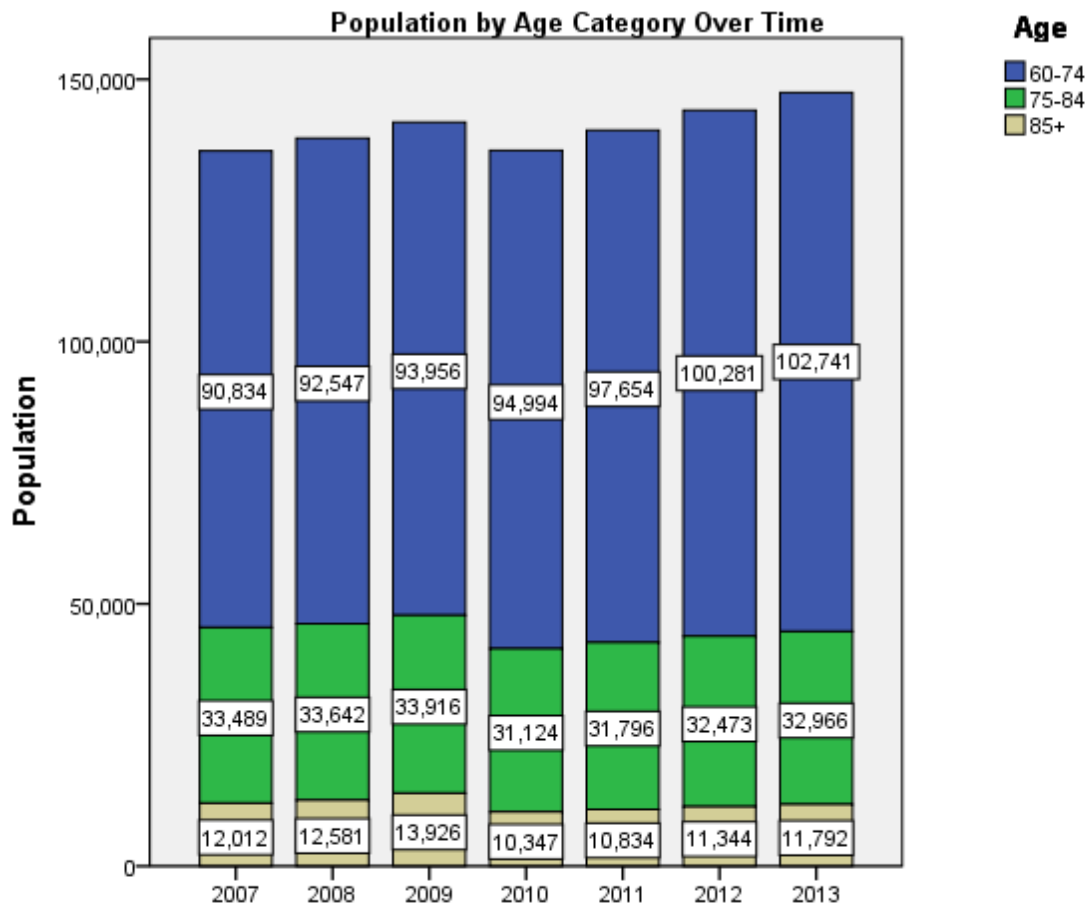
English Proficiency (60+)	
With Limited English Proficiency	1,650

2013 Florida PSA Profiles

PSA 1 (Continued)

Cost of Living	
	Annual Expenses ⁸
Single Elders	
Owner without Mortgage	\$20,118
Renter, one bedroom	\$24,288
Owner with Mortgage	\$29,370
Elder Couple	
Owner without Mortgage	\$32,565
Renter, one bedroom	\$36,735
Owner with Mortgage	\$41,817

Note: Wider Opportunities for Women Elder Economic Security Standard™ Index (Elder Index) measures how much income retired older adults require to meet their basic needs—without public or private assistance. The Elder Index measures basic expenses for elders age 65+ living in the community, not in institutions.





2013 Florida PSA Profiles

¹ Total Minorities = (60+ Population) – (White Non-Hispanic 60+)

² OSS beds: Optional State Supplementation beds

³ ECC License: Extended Congregate Care License

⁴ LMH License: Limited Mental Health License

⁵ LNS License: Limited Nursing Services License

⁶ With One Type of Disability: 60+ people who have only one type of disability

⁷ Probable Alzheimer's Cases = (65-74 Population x 0.0136) + (75-84 Population x 0.1822) + (85+ Population x 0.4098)

⁸ Annual expenses include: housing, including utilities, taxes, insurance; food; transportation; health care, based on good health; and miscellaneous.

Sources

- Population: Florida Population by County, Age, Race, Ethnicity and Gender provided by Florida Legislature, Office of Economic and Demographic Research
- Financial Status & Living Situation: Department of Elder Affairs calculations based on Florida Population data and 2007-2011 American Community Survey
- Medically Underserved Population (Data as of 7/18/2014): Florida Department of Health and U.S. Department of Health and Human Services
- Grandparents: Department of Elder Affairs calculations based on Florida Population data and 2007-2011 American Community Survey, Special Tabulation on Aging
- Skilled Nursing Facility Utilization, Adult Day Care, Adult Family Care Home, Ambulatory Surgical Centers, Assisted Living Facilities, Home Health Agencies, Homemakers & Companion Service Companies, Hospitals: Florida Agency for Health Care Administration
- Rural Designation: Based on the definition of Rural Designation by Rural Economic Development Initiative
- Medical Professionals: Florida Department of Health
- Driver's License: Florida Department of Highway Safety & Motor Vehicles
- Food Stamps: Florida Department of Children and Families
- Registered Voters (Data as of 1/31/2014) : Florida Department of State
- Households with Cost Burden Above 30% and income below 50% Area Median Income: The Shimberg Center for Housing Studies
- Median Household Incomes: U.S. Census Bureau: State and County QuickFacts
- Medicaid & Medicare Eligibility and Medicaid Eligibility: Florida Agency for Health Care Administration
- Veterans Demographics: Florida Department of Veterans' Affairs
- Disability Status: Department of Elder Affairs calculations based on Florida Population data and 2009-2011 American Community Survey Data
- Probable Alzheimer's Cases: Department of Elder Affairs calculations based on Florida Population data and Alzheimer's by Age in 2011 Alzheimer's Disease Facts and Figures report at http://www.alz.org/documents_custom/Facts_2011/ALZ_FL.pdf?type=interior_map&facts=undefined&facts=facts
- English Proficiency: Department of Elder Affairs calculations based on Florida Population data and 2007-2011 American Community Survey, Special Tabulation on Aging
- Cost of Living (Data as of 7/18/2014): Wider Opportunities for Women Elder Economic Security Standard™ Index (Elder Index) at <http://www.basiceconomicsecurity.org/EI/>