



# 2013 Florida County Profiles

## Monroe

Population by Age Category		
All Ages	73,560	100.0%
Under 60	53,008	72.1%
60+	20,552	27.9%
65+	14,091	19.2%
70+	8,816	12.0%
75+	5,243	7.1%
80+	2,998	4.1%
85+	1,310	1.8%

Population by Race (60+)		
White	19,511	94.9%
Non-White	852	4.1%
Black	652	3.2%
Other Minorities	200	1.0%

Population by Ethnicity (60+)		
Total Hispanic	2,378	11.6%
White	2,288	11.1%
Non-White	90	0.4%
Total Non-Hispanic	18,174	88.4%
Total Minorities <sup>1</sup>	3,329	16.2%

Population by Gender (60+)		
Population 60+	20,552	27.9%
Male	11,132	54.2%
Female	9,420	45.8%

Financial Status (60+, % 60+)		
Below Poverty Guideline	1,981	9.6%
Below 125% of Poverty Guideline	2,947	14.3%
Minorities Below Poverty Guideline	616	3.0%
Minorities Below 125% of Poverty Guideline	849	4.1%

Medically Underserved (65+)		
Total Medically Underserved	12,081	
Medically Underserved Populations - Living in Areas Defined as Having Medically Underserved Populations	0	
Medically Underserved Areas - Living in Medically Underserved Areas	12,081	

Living Situation (60+)		
Living Alone	4,408	
Male	2,300	
Female	2,108	

Grandparents (60+)	
Total 60+ Living With Own Grandchildren (Under Age 18)	663
Grandparent Responsible for Own Grandchildren (Under Age 18)	219
Grandparent Not Responsible for Own Grandchildren (Under Age 18)	444
60+ Not Living With Own Grandchildren (Under Age 18)	19,635

Skilled Nursing Facility Utilization	
SNF Beds	240
Community Beds	240
Sheltered Beds	0
Veterans Administration Beds	0
Other Beds	0
SNFs With Beds	2
Community Beds	2
Sheltered Beds	0
Veterans Administration Beds	0
Other Beds	0
SNFs With Community Beds	2
Community Bed Days	87,600
Community Patient Days	43,866
Medicaid Patient Days	25,136
Occupancy Rate	50.1%
Percent Medicaid	57.3%

Adult Day Care	
Facilities	1
Capacity	45

Adult Family Care Homes	
Homes	0
Beds	0

Home Health Agencies	
Agencies	4
Medicaid Certified Agencies	1
Medicare Certified Agencies	4

Homemaker & Companion Service Companies	
Companies	7

Ambulatory Surgical Centers	
Facilities	1
Operating Rooms	2
Recovery Beds	9



# 2013 Florida County Profiles

## Monroe (Continued)

Rural Designation	
Rural (Yes/No)	NO

Assisted Living Facilities	
Total Beds	32
OSS Beds <sup>2</sup>	32
Non-OSS Beds	0
Total Facilities	2
Facilities With ECC License <sup>3</sup>	0
Facilities With LMH License <sup>4</sup>	1
Facilities With LNS License <sup>5</sup>	0

Hospitals	
Hospitals	4
Hospitals With Skilled Nursing Units	1
Hospital Beds	267
Skilled Nursing Unit Beds	15

Medical Professionals	
Medical Doctors	
Licensed	177
Limited License	0
Critical Need Area License	0
Restricted	0
Medical Faculty Certificate	0
Public Health Certificate	0
Specialties	
Licensed Podiatric Physicians	4
Licensed Osteopathic Physicians	21
Licensed Chiropractic Physicians	20
Registered Nurses	
Licensed Registered Nurses	915

Driver's License	
Drivers With Florida Driver's License - All Ages	72,108
Drivers With Florida Driver's License - Age 60+	22,224
Percent of Drivers With Florida Driver's License - Age 60+	30.8%

Food Stamps (60+)	
Participants (60+)	1,356
Potentially Eligible	2,947
Food Stamp Participation Rate (60+)	46.0%

Registered Voters	
Registered to Vote in Florida - All Ages	53,186
Registered to Vote in Florida - Age 60+	19,605
Percent of Population Registered to Vote in Florida - Age 60+	36.9%

Households With Cost Burden Above 30% and Income Below 50% Area Median Income (65+) (2010)	
Elder Households	8,834
Percent of All Households	21.0%

Median Household Income (All Ages)	
2008-2012	\$53,418

Medicaid & Medicare Eligibility	
Medicaid Eligible - All Ages	8,066
Medicaid Eligible - 60+	1,500
Dual Eligible - All Ages	1,874
Dual Eligible - 60+	1,297

Veterans	
Total	6,018
Age 45-64	3,217
Age 65-84	2,513
Age 85+	288

Disability Status (60+)	
With One Type of Disability <sup>6</sup>	2,862
Hearing	2,333
Vision	984
Cognitive	1,164
Ambulatory	3,385
Self-Care	1,091
Independent Living	1,884
With Two or More Disabilities	2,609
With No Disabilities	16,199
Probable Alzheimer's Cases <sup>7</sup>	1,374

English Proficiency (60+)	
With Limited English Proficiency	922

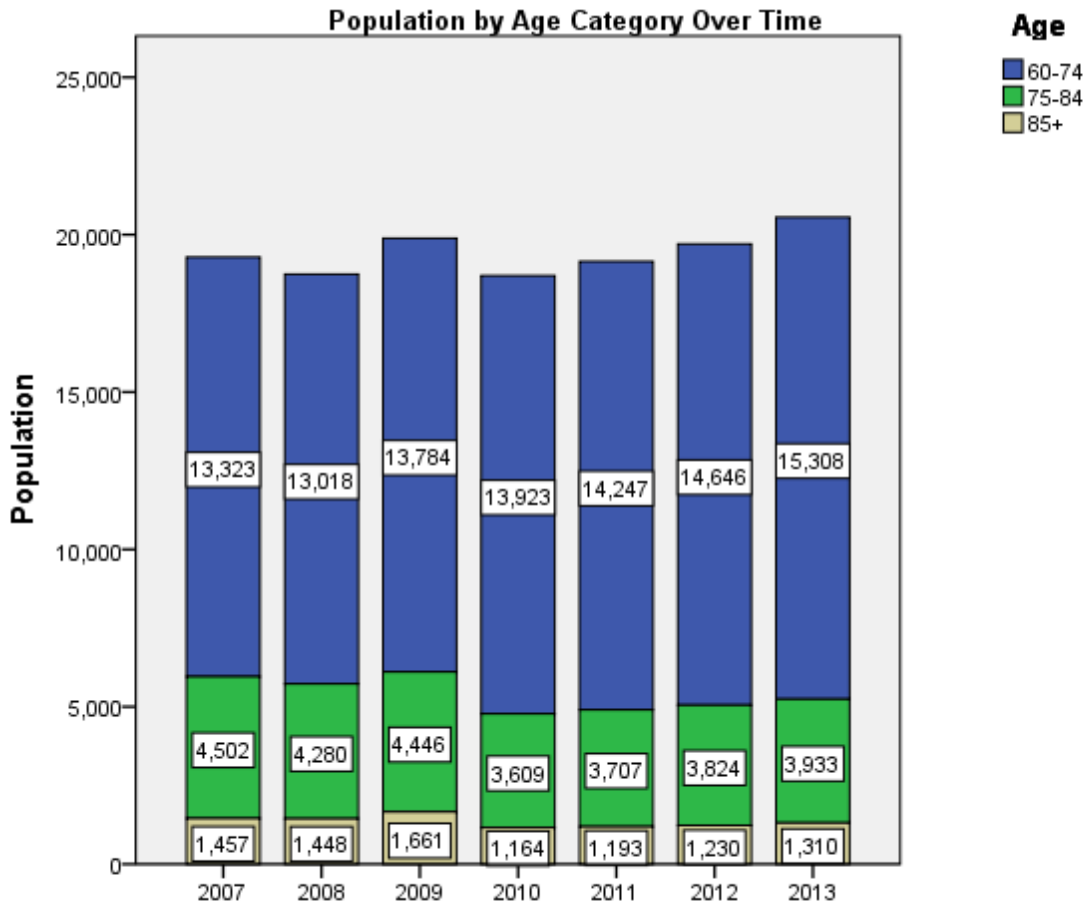
# 2013 Florida County Profiles

## Monroe (Continued)

Cost of Living	
	Annual Expenses <sup>8</sup>
<b>Single Elders</b>	
Owner without Mortgage	\$23,736
Renter, one bedroom	\$29,748
Owner with Mortgage	\$39,396
<b>Elder Couple</b>	
Owner without Mortgage	\$36,156
Renter, one bedroom	\$42,168
Owner with Mortgage	\$51,816

Note: Wider Opportunities for Women Elder Economic Security Standard™ Index (Elder Index) measures how much income retired older adults require to meet their basic needs—without public or private assistance. The Elder Index measures basic expenses for elders age 65+ living in the community, not in institutions.

Useful Websites
<a href="#">County Chronic Disease Profile (Monroe)</a>
<a href="#">Florida Housing Data Clearinghouse (Monroe)</a>
<a href="#">Behavioral Risk Factors (BRFSS) (Monroe)</a>





# 2013 Florida County Profiles

---

<sup>1</sup> Total Minorities = (60+ Population) – (White Non-Hispanic 60+)

<sup>2</sup> OSS beds: Optional State Supplementation beds

<sup>3</sup> ECC License: Extended Congregate Care License

<sup>4</sup> LMH License: Limited Mental Health License

<sup>5</sup> LNS License: Limited Nursing Services License

<sup>6</sup> With One Type of Disability: 60+ people who have only one type of disability

<sup>7</sup> Probable Alzheimer's Cases = (65-74 Population x 0.0136) + (75-84 Population x 0.1822) + (85+ Population x 0.4098)

<sup>8</sup> Annual expenses include: housing, including utilities, taxes, insurance; food; transportation; health care, based on good health; and miscellaneous.

## Sources

- Population: Florida Population by County, Age, Race, Ethnicity and Gender provided by Florida Legislature, Office of Economic and Demographic Research
- Financial Status & Living Situation: Department of Elder Affairs calculations based on Florida Population data and 2007-2011 American Community Survey
- Medically Underserved Population (Data as of 7/18/2014): Florida Department of Health and U.S. Department of Health and Human Services
- Grandparents: Department of Elder Affairs calculations based on Florida Population data and 2007-2011 American Community Survey, Special Tabulation on Aging
- Skilled Nursing Facility Utilization, Adult Day Care, Adult Family Care Home, Ambulatory Surgical Centers, Assisted Living Facilities, Home Health Agencies, Homemakers & Companion Service Companies, Hospitals: Florida Agency for Health Care Administration
- Rural Designation: Based on the definition of Rural Designation by Rural Economic Development Initiative
- Medical Professionals: Florida Department of Health
- Driver's License: Florida Department of Highway Safety & Motor Vehicles
- Food Stamps: Florida Department of Children and Families
- Registered Voters (Data as of 1/31/2014) : Florida Department of State
- Households with Cost Burden Above 30% and income below 50% Area Median Income: The Shimberg Center for Housing Studies
- Median Household Incomes: U.S. Census Bureau: State and County QuickFacts
- Medicaid & Medicare Eligibility and Medicaid Eligibility: Florida Agency for Health Care Administration
- Veterans Demographics: Florida Department of Veterans' Affairs
- Disability Status: Department of Elder Affairs calculations based on Florida Population data and 2009-2011 American Community Survey Data
- Probable Alzheimer's Cases: Department of Elder Affairs calculations based on Florida Population data and Alzheimer's by Age in 2011 Alzheimer's Disease Facts and Figures report at [http://www.alz.org/documents\\_custom/Facts\\_2011/ALZ\\_FL.pdf?type=interior\\_map&facts=undefined&facts=facts](http://www.alz.org/documents_custom/Facts_2011/ALZ_FL.pdf?type=interior_map&facts=undefined&facts=facts)
- English Proficiency: Department of Elder Affairs calculations based on Florida Population data and 2007-2011 American Community Survey, Special Tabulation on Aging
- Cost of Living (Data as of 7/18/2014): Wider Opportunities for Women Elder Economic Security Standard™ Index (Elder Index) at <http://www.basiceconomicsecurity.org/EI/>