



2013 Florida County Profiles

Martin

Population by Age Category		
All Ages	148,077	100.0%
Under 60	95,064	64.2%
60+	53,013	35.8%
65+	41,539	28.1%
70+	30,506	20.6%
75+	20,997	14.2%
80+	13,338	9.0%
85+	6,700	4.5%

Population by Race (60+)		
White	51,443	97.0%
Non-White	1,640	3.1%
Black	1,191	2.2%
Other Minorities	449	0.8%

Population by Ethnicity (60+)		
Total Hispanic	1,291	2.4%
White	1,142	2.2%
Non-White	149	0.3%
Total Non-Hispanic	51,722	97.6%
Total Minorities ¹	2,712	5.1%

Population by Gender (60+)		
Population 60+	53,013	35.8%
Male	24,406	46.0%
Female	28,607	54.0%

Financial Status (60+, % 60+)		
Below Poverty Guideline	3,268	6.2%
Below 125% of Poverty Guideline	4,999	9.4%
Minorities Below Poverty Guideline	430	0.8%
Minorities Below 125% of Poverty Guideline	578	1.1%

Medically Underserved (65+)		
Total Medically Underserved	2,283	
Medically Underserved Populations - Living in Areas Defined as Having Medically Underserved Populations	0	
Medically Underserved Areas - Living in Medically Underserved Areas	2,283	

Living Situation (60+)		
Living Alone	12,497	
Male	4,239	
Female	8,258	

Grandparents (60+)	
Total 60+ Living With Own Grandchildren (Under Age 18)	1,240
Grandparent Responsible for Own Grandchildren (Under Age 18)	489
Grandparent Not Responsible for Own Grandchildren (Under Age 18)	751
60+ Not Living With Own Grandchildren (Under Age 18)	51,069

Skilled Nursing Facility Utilization	
SNF Beds	833
Community Beds	795
Sheltered Beds	38
Veterans Administration Beds	0
Other Beds	0
SNFs With Beds	8
Community Beds	7
Sheltered Beds	1
Veterans Administration Beds	0
Other Beds	0
SNFs With Community Beds	7
Community Bed Days	290,175
Community Patient Days	257,822
Medicaid Patient Days	159,094
Occupancy Rate	88.9%
Percent Medicaid	61.7%

Adult Day Care	
Facilities	1
Capacity	92

Adult Family Care Homes	
Homes	1
Beds	5

Home Health Agencies	
Agencies	13
Medicaid Certified Agencies	1
Medicare Certified Agencies	5

Homemaker & Companion Service Companies	
Companies	12

Ambulatory Surgical Centers	
Facilities	3
Operating Rooms	8
Recovery Beds	21



2013 Florida County Profiles

Martin (Continued)

Rural Designation	
Rural (Yes/No)	NO

Assisted Living Facilities	
Total Beds	630
OSS Beds ²	0
Non-OSS Beds	630
Total Facilities	13
Facilities With ECC License ³	4
Facilities With LMH License ⁴	0
Facilities With LNS License ⁵	5

Hospitals	
Hospitals	3
Hospitals With Skilled Nursing Units	0
Hospital Beds	344
Skilled Nursing Unit Beds	0

Medical Professionals	
Medical Doctors	
Licensed	372
Limited License	2
Critical Need Area License	0
Restricted	0
Medical Faculty Certificate	0
Public Health Certificate	0
Specialties	
Licensed Podiatric Physicians	14
Licensed Osteopathic Physicians	62
Licensed Chiropractic Physicians	89
Registered Nurses	
Licensed Registered Nurses	2,096

Driver's License	
Drivers With Florida Driver's License - All Ages	122,866
Drivers With Florida Driver's License - Age 60+	49,860
Percent of Drivers With Florida Driver's License - Age 60+	40.0%

Food Stamps (60+)	
Participants (60+)	1,486
Potentially Eligible	4,999
Food Stamp Participation Rate (60+)	29.7%

Registered Voters	
Registered to Vote in Florida - All Ages	102,283
Registered to Vote in Florida - Age 60+	45,800
Percent of Population Registered to Vote in Florida - Age 60+	44.8%

Households With Cost Burden Above 30% and Income Below 50% Area Median Income (65+) (2010)	
Elder Households	25,773
Percent of All Households	10.5%

Median Household Income (All Ages)	
2008-2012	\$50,573

Medicaid & Medicare Eligibility	
Medicaid Eligible - All Ages	15,452
Medicaid Eligible - 60+	2,167
Dual Eligible - All Ages	2,883
Dual Eligible - 60+	1,981

Veterans	
Total	12,674
Age 45-64	4,127
Age 65-84	6,931
Age 85+	1,616

Disability Status (60+)	
With One Type of Disability ⁶	7,851
Hearing	6,616
Vision	1,351
Cognitive	3,374
Ambulatory	8,913
Self-Care	2,554
Independent Living	4,824
With Two or More Disabilities	6,669
With No Disabilities	38,483
Probable Alzheimer's Cases ⁷	5,631

English Proficiency (60+)	
With Limited English Proficiency	499

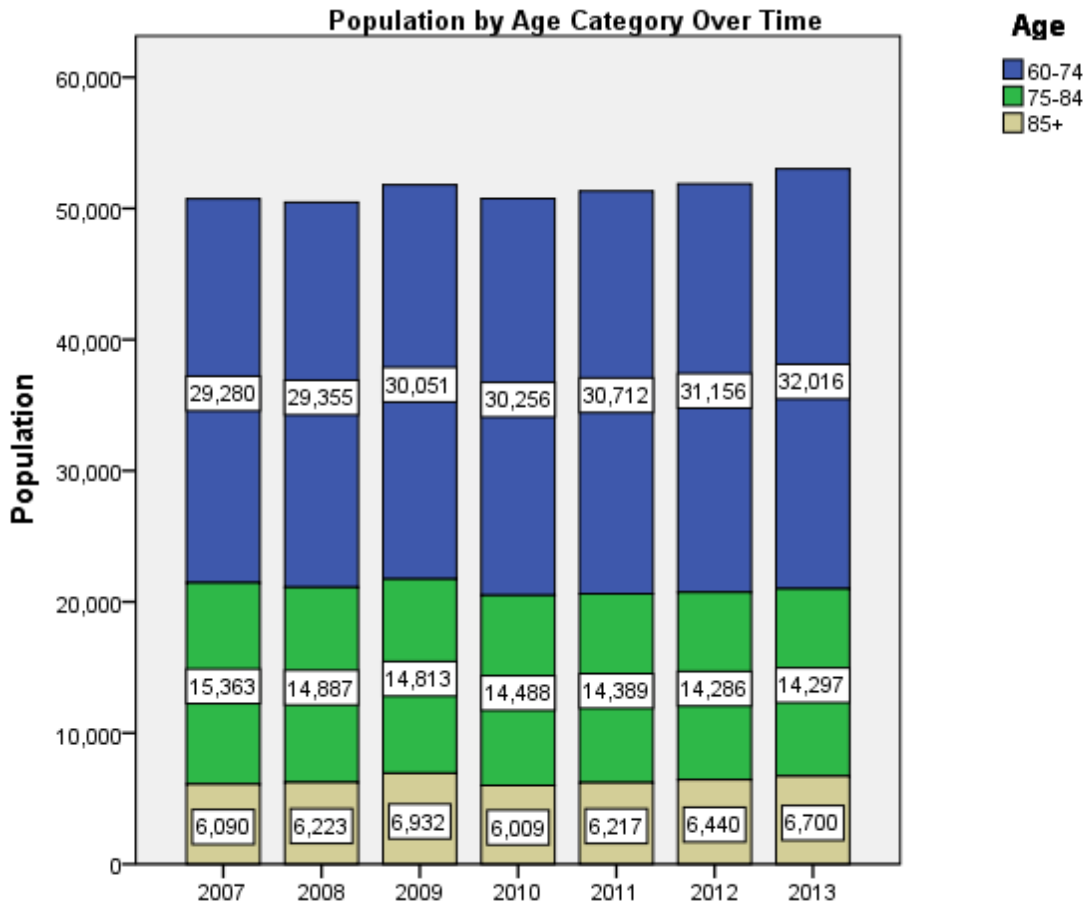
2013 Florida County Profiles

Martin (Continued)

Cost of Living	
	Annual Expenses ⁸
Single Elders	
Owner without Mortgage	\$22,608
Renter, one bedroom	\$25,416
Owner with Mortgage	\$30,624
Elder Couple	
Owner without Mortgage	\$35,076
Renter, one bedroom	\$37,884
Owner with Mortgage	\$43,092

Note: Wider Opportunities for Women Elder Economic Security Standard™ Index (Elder Index) measures how much income retired older adults require to meet their basic needs—without public or private assistance. The Elder Index measures basic expenses for elders age 65+ living in the community, not in institutions.

Useful Websites
County Chronic Disease Profile (Martin)
Florida Housing Data Clearinghouse (Martin)
Behavioral Risk Factors (BRFSS) (Martin)





2013 Florida County Profiles

¹ Total Minorities = (60+ Population) – (White Non-Hispanic 60+)

² OSS beds: Optional State Supplementation beds

³ ECC License: Extended Congregate Care License

⁴ LMH License: Limited Mental Health License

⁵ LNS License: Limited Nursing Services License

⁶ With One Type of Disability: 60+ people who have only one type of disability

⁷ Probable Alzheimer's Cases = (65-74 Population x 0.0136) + (75-84 Population x 0.1822) + (85+ Population x 0.4098)

⁸ Annual expenses include: housing, including utilities, taxes, insurance; food; transportation; health care, based on good health; and miscellaneous.

Sources

- Population: Florida Population by County, Age, Race, Ethnicity and Gender provided by Florida Legislature, Office of Economic and Demographic Research
- Financial Status & Living Situation: Department of Elder Affairs calculations based on Florida Population data and 2007-2011 American Community Survey
- Medically Underserved Population (Data as of 7/18/2014): Florida Department of Health and U.S. Department of Health and Human Services
- Grandparents: Department of Elder Affairs calculations based on Florida Population data and 2007-2011 American Community Survey, Special Tabulation on Aging
- Skilled Nursing Facility Utilization, Adult Day Care, Adult Family Care Home, Ambulatory Surgical Centers, Assisted Living Facilities, Home Health Agencies, Homemakers & Companion Service Companies, Hospitals: Florida Agency for Health Care Administration
- Rural Designation: Based on the definition of Rural Designation by Rural Economic Development Initiative
- Medical Professionals: Florida Department of Health
- Driver's License: Florida Department of Highway Safety & Motor Vehicles
- Food Stamps: Florida Department of Children and Families
- Registered Voters (Data as of 1/31/2014) : Florida Department of State
- Households with Cost Burden Above 30% and income below 50% Area Median Income: The Shimberg Center for Housing Studies
- Median Household Incomes: U.S. Census Bureau: State and County QuickFacts
- Medicaid & Medicare Eligibility and Medicaid Eligibility: Florida Agency for Health Care Administration
- Veterans Demographics: Florida Department of Veterans' Affairs
- Disability Status: Department of Elder Affairs calculations based on Florida Population data and 2009-2011 American Community Survey Data
- Probable Alzheimer's Cases: Department of Elder Affairs calculations based on Florida Population data and Alzheimer's by Age in 2011 Alzheimer's Disease Facts and Figures report at http://www.alz.org/documents_custom/Facts_2011/ALZ_FL.pdf?type=interior_map&facts=undefined&facts=facts
- English Proficiency: Department of Elder Affairs calculations based on Florida Population data and 2007-2011 American Community Survey, Special Tabulation on Aging
- Cost of Living (Data as of 7/18/2014): Wider Opportunities for Women Elder Economic Security Standard™ Index (Elder Index) at <http://www.basiceconomicsecurity.org/EI/>