



2013 Florida County Profiles

Manatee

Population by Age Category		
All Ages	333,880	100.0%
Under 60	229,635	68.8%
60+	104,245	31.2%
65+	79,931	23.9%
70+	56,449	16.9%
75+	37,152	11.1%
80+	22,768	6.8%
85+	10,839	3.2%

Population by Race (60+)		
White	99,156	95.1%
Non-White	5,339	5.1%
Black	4,110	3.9%
Other Minorities	1,229	1.2%

Population by Ethnicity (60+)		
Total Hispanic	3,808	3.7%
White	3,527	3.4%
Non-White	281	0.3%
Total Non-Hispanic	100,437	96.3%
Total Minorities ¹	8,616	8.3%

Population by Gender (60+)		
Population 60+	104,245	31.2%
Male	47,493	45.6%
Female	56,752	54.4%

Financial Status (60+, % 60+)		
Below Poverty Guideline	7,610	7.3%
Below 125% of Poverty Guideline	12,355	11.9%
Minorities Below Poverty Guideline	1,208	1.2%
Minorities Below 125% of Poverty Guideline	1,683	1.6%

Medically Underserved (65+)	
Total Medically Underserved	24,171
Medically Underserved Populations - Living in Areas Defined as Having Medically Underserved Populations	24,171
Medically Underserved Areas - Living in Medically Underserved Areas	0

Living Situation (60+)	
Living Alone	24,301
Male	6,960
Female	17,341

Grandparents (60+)	
Total 60+ Living With Own Grandchildren (Under Age 18)	2,731
Grandparent Responsible for Own Grandchildren (Under Age 18)	1,093
Grandparent Not Responsible for Own Grandchildren (Under Age 18)	1,643
60+ Not Living With Own Grandchildren (Under Age 18)	99,834

Skilled Nursing Facility Utilization	
SNF Beds	1,562
Community Beds	1,360
Sheltered Beds	202
Veterans Administration Beds	0
Other Beds	0
SNFs With Beds	16
Community Beds	13
Sheltered Beds	3
Veterans Administration Beds	0
Other Beds	0
SNFs With Community Beds	13
Community Bed Days	496,400
Community Patient Days	422,021
Medicaid Patient Days	251,671
Occupancy Rate	85.0%
Percent Medicaid	59.6%

Adult Day Care	
Facilities	1
Capacity	100

Adult Family Care Homes	
Homes	5
Beds	25

Home Health Agencies	
Agencies	28
Medicaid Certified Agencies	3
Medicare Certified Agencies	15

Homemaker & Companion Service Companies	
Companies	34

Ambulatory Surgical Centers	
Facilities	9
Operating Rooms	20
Recovery Beds	47



2013 Florida County Profiles

Manatee (Continued)

Rural Designation	
Rural (Yes/No)	NO

Assisted Living Facilities	
Total Beds	1,391
OSS Beds ²	436
Non-OSS Beds	955
Total Facilities	27
Facilities With ECC License ³	3
Facilities With LMH License ⁴	7
Facilities With LNS License ⁵	4

Hospitals	
Hospitals	5
Hospitals With Skilled Nursing Units	0
Hospital Beds	913
Skilled Nursing Unit Beds	0

Medical Professionals	
Medical Doctors	
Licensed	691
Limited License	4
Critical Need Area License	2
Restricted	0
Medical Faculty Certificate	0
Public Health Certificate	0
Specialties	
Licensed Podiatric Physicians	29
Licensed Osteopathic Physicians	99
Licensed Chiropractic Physicians	85
Registered Nurses	
Licensed Registered Nurses	4,676

Driver's License	
Drivers With Florida Driver's License - All Ages	250,648
Drivers With Florida Driver's License - Age 60+	91,371
Percent of Drivers With Florida Driver's License - Age 60+	31.6%

Food Stamps (60+)	
Participants (60+)	4,294
Potentially Eligible	12,355
Food Stamp Participation Rate (60+)	34.8%

Registered Voters	
Registered to Vote in Florida - All Ages	206,806
Registered to Vote in Florida - Age 60+	86,447
Percent of Population Registered to Vote in Florida - Age 60+	41.8%

Households With Cost Burden Above 30% and Income Below 50% Area Median Income (65+) (2010)	
Elder Households	46,787
Percent of All Households	15.1%

Median Household Income (All Ages)	
2008-2012	\$47,910

Medicaid & Medicare Eligibility	
Medicaid Eligible - All Ages	51,200
Medicaid Eligible - 60+	6,130
Dual Eligible - All Ages	8,617
Dual Eligible - 60+	5,568

Veterans	
Total	26,355
Age 45-64	9,183
Age 65-84	14,126
Age 85+	3,046

Disability Status (60+)	
With One Type of Disability ⁶	14,127
Hearing	13,131
Vision	5,181
Cognitive	6,140
Ambulatory	17,224
Self-Care	5,063
Independent Living	10,276
With Two or More Disabilities	13,653
With No Disabilities	77,746
Probable Alzheimer's Cases ⁷	9,820

English Proficiency (60+)	
With Limited English Proficiency	1,670

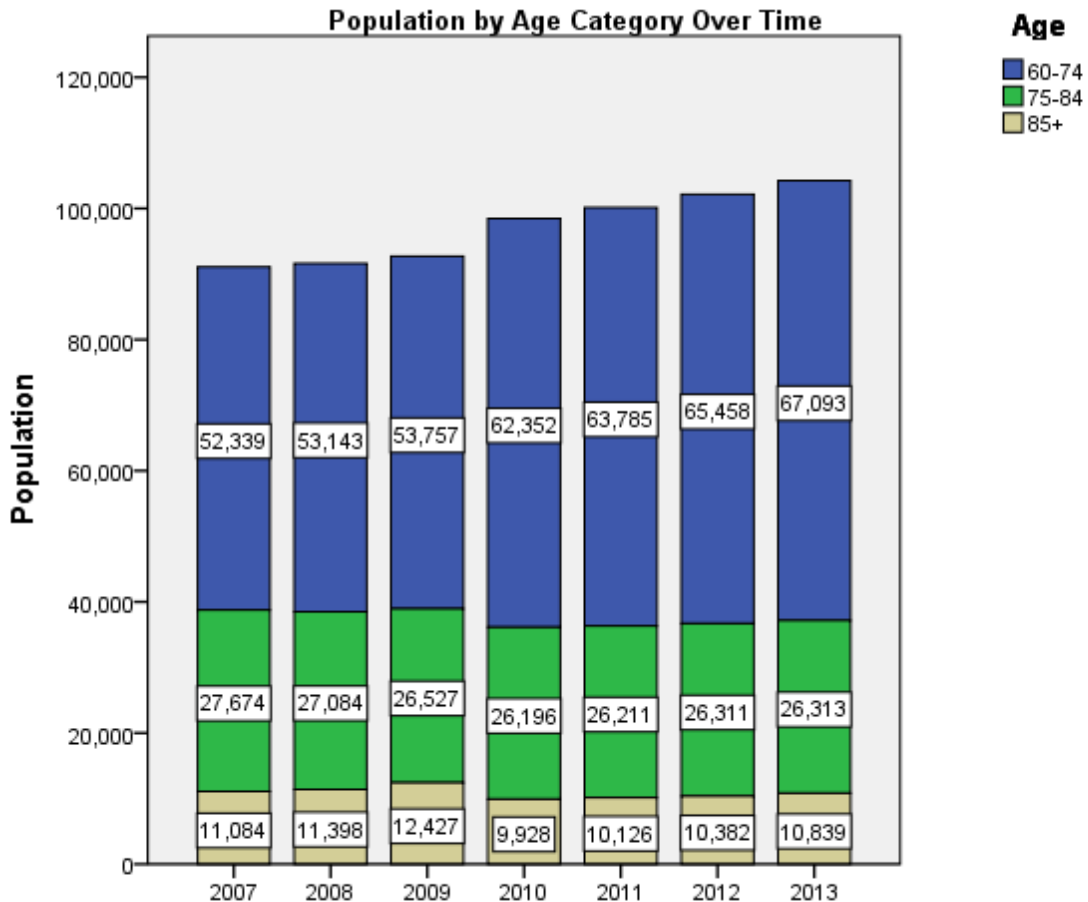
2013 Florida County Profiles

Manatee (Continued)

Cost of Living	
	Annual Expenses ⁸
Single Elders	
Owner without Mortgage	\$18,060
Renter, one bedroom	\$23,868
Owner with Mortgage	\$28,536
Elder Couple	
Owner without Mortgage	\$27,156
Renter, one bedroom	\$32,964
Owner with Mortgage	\$37,632

Note: Wider Opportunities for Women Elder Economic Security Standard™ Index (Elder Index) measures how much income retired older adults require to meet their basic needs—without public or private assistance. The Elder Index measures basic expenses for elders age 65+ living in the community, not in institutions.

Useful Websites
County Chronic Disease Profile (Manatee)
Florida Housing Data Clearinghouse (Manatee)
Behavioral Risk Factors (BRFSS) (Manatee)





2013 Florida County Profiles

¹ Total Minorities = (60+ Population) – (White Non-Hispanic 60+)

² OSS beds: Optional State Supplementation beds

³ ECC License: Extended Congregate Care License

⁴ LMH License: Limited Mental Health License

⁵ LNS License: Limited Nursing Services License

⁶ With One Type of Disability: 60+ people who have only one type of disability

⁷ Probable Alzheimer's Cases = (65-74 Population x 0.0136) + (75-84 Population x 0.1822) + (85+ Population x 0.4098)

⁸ Annual expenses include: housing, including utilities, taxes, insurance; food; transportation; health care, based on good health; and miscellaneous.

Sources

- Population: Florida Population by County, Age, Race, Ethnicity and Gender provided by Florida Legislature, Office of Economic and Demographic Research
- Financial Status & Living Situation: Department of Elder Affairs calculations based on Florida Population data and 2007-2011 American Community Survey
- Medically Underserved Population (Data as of 7/18/2014): Florida Department of Health and U.S. Department of Health and Human Services
- Grandparents: Department of Elder Affairs calculations based on Florida Population data and 2007-2011 American Community Survey, Special Tabulation on Aging
- Skilled Nursing Facility Utilization, Adult Day Care, Adult Family Care Home, Ambulatory Surgical Centers, Assisted Living Facilities, Home Health Agencies, Homemakers & Companion Service Companies, Hospitals: Florida Agency for Health Care Administration
- Rural Designation: Based on the definition of Rural Designation by Rural Economic Development Initiative
- Medical Professionals: Florida Department of Health
- Driver's License: Florida Department of Highway Safety & Motor Vehicles
- Food Stamps: Florida Department of Children and Families
- Registered Voters (Data as of 1/31/2014) : Florida Department of State
- Households with Cost Burden Above 30% and income below 50% Area Median Income: The Shimberg Center for Housing Studies
- Median Household Incomes: U.S. Census Bureau: State and County QuickFacts
- Medicaid & Medicare Eligibility and Medicaid Eligibility: Florida Agency for Health Care Administration
- Veterans Demographics: Florida Department of Veterans' Affairs
- Disability Status: Department of Elder Affairs calculations based on Florida Population data and 2009-2011 American Community Survey Data
- Probable Alzheimer's Cases: Department of Elder Affairs calculations based on Florida Population data and Alzheimer's by Age in 2011 Alzheimer's Disease Facts and Figures report at http://www.alz.org/documents_custom/Facts_2011/ALZ_FL.pdf?type=interior_map&facts=undefined&facts=facts
- English Proficiency: Department of Elder Affairs calculations based on Florida Population data and 2007-2011 American Community Survey, Special Tabulation on Aging
- Cost of Living (Data as of 7/18/2014): Wider Opportunities for Women Elder Economic Security Standard™ Index (Elder Index) at <http://www.basiceconomicsecurity.org/EI/>