



2013 Florida County Profiles

Levy

Population by Age Category		
All Ages	40,304	100.0%
Under 60	28,927	71.8%
60+	11,377	28.2%
65+	8,237	20.4%
70+	5,465	13.6%
75+	3,291	8.2%
80+	1,797	4.5%
85+	727	1.8%

Population by Race (60+)		
White	10,532	92.6%
Non-White	868	7.6%
Black	733	6.4%
Other Minorities	135	1.2%

Population by Ethnicity (60+)		
Total Hispanic	352	3.1%
White	326	2.9%
Non-White	26	0.2%
Total Non-Hispanic	11,025	96.9%
Total Minorities ¹	1,171	10.3%

Population by Gender (60+)		
Population 60+	11,377	28.2%
Male	5,522	48.5%
Female	5,855	51.5%

Financial Status (60+, % 60+)		
Below Poverty Guideline	1,757	15.4%
Below 125% of Poverty Guideline	2,435	21.4%
Minorities Below Poverty Guideline	326	2.9%
Minorities Below 125% of Poverty Guideline	374	3.3%

Medically Underserved (65+)		
Total Medically Underserved	3,417	
Medically Underserved Populations - Living in Areas Defined as Having Medically Underserved Populations	3,417	
Medically Underserved Areas - Living in Medically Underserved Areas	0	

Living Situation (60+)		
Living Alone	2,621	
Male	985	
Female	1,636	

Grandparents (60+)	
Total 60+ Living With Own Grandchildren (Under Age 18)	692
Grandparent Responsible for Own Grandchildren (Under Age 18)	349
Grandparent Not Responsible for Own Grandchildren (Under Age 18)	338
60+ Not Living With Own Grandchildren (Under Age 18)	10,558

Skilled Nursing Facility Utilization	
SNF Beds	120
Community Beds	120
Sheltered Beds	0
Veterans Administration Beds	0
Other Beds	0
SNFs With Beds	1
Community Beds	1
Sheltered Beds	0
Veterans Administration Beds	0
Other Beds	0
SNFs With Community Beds	1
Community Bed Days	57,360
Community Patient Days	41,382
Medicaid Patient Days	29,056
Occupancy Rate	72.1%
Percent Medicaid	70.2%

Adult Day Care	
Facilities	0
Capacity	0

Adult Family Care Homes	
Homes	2
Beds	7

Home Health Agencies	
Agencies	1
Medicaid Certified Agencies	0
Medicare Certified Agencies	0

Homemaker & Companion Service Companies	
Companies	2

Ambulatory Surgical Centers	
Facilities	0
Operating Rooms	0
Recovery Beds	0



2013 Florida County Profiles

Levy (Continued)

Rural Designation	
Rural (Yes/No)	YES

Assisted Living Facilities	
Total Beds	0
OSS Beds ²	0
Non-OSS Beds	0
Total Facilities	0
Facilities With ECC License ³	0
Facilities With LMH License ⁴	0
Facilities With LNS License ⁵	0

Hospitals	
Hospitals	1
Hospitals With Skilled Nursing Units	0
Hospital Beds	40
Skilled Nursing Unit Beds	0

Medical Professionals	
Medical Doctors	
Licensed	14
Limited License	0
Critical Need Area License	0
Restricted	0
Medical Faculty Certificate	0
Public Health Certificate	0
Specialties	
Licensed Podiatric Physicians	0
Licensed Osteopathic Physicians	4
Licensed Chiropractic Physicians	7
Registered Nurses	
Licensed Registered Nurses	351

Driver's License	
Drivers With Florida Driver's License - All Ages	31,412
Drivers With Florida Driver's License - Age 60+	10,868
Percent of Drivers With Florida Driver's License - Age 60+	21.9%

Food Stamps (60+)	
Participants (60+)	820
Potentially Eligible	2,435
Food Stamp Participation Rate (60+)	33.7%

Registered Voters	
Registered to Vote in Florida - All Ages	25,585
Registered to Vote in Florida - Age 60+	9,810
Percent of Population Registered to Vote in Florida - Age 60+	38.3%

Households With Cost Burden Above 30% and Income Below 50% Area Median Income (65+) (2010)	
Elder Households	5,007
Percent of All Households	17.7%

Median Household Income (All Ages)	
2008-2012	\$35,093

Medicaid & Medicare Eligibility	
Medicaid Eligible - All Ages	8,863
Medicaid Eligible - 60+	1,450
Dual Eligible - All Ages	2,023
Dual Eligible - 60+	1,295

Veterans	
Total	3,845
Age 45-64	1,586
Age 65-84	1,908
Age 85+	351

Disability Status (60+)	
With One Type of Disability ⁶	1,982
Hearing	1,739
Vision	750
Cognitive	967
Ambulatory	2,748
Self-Care	1,004
Independent Living	1,284
With Two or More Disabilities	2,219
With No Disabilities	7,303
Probable Alzheimer's Cases ⁷	833

English Proficiency (60+)	
With Limited English Proficiency	95

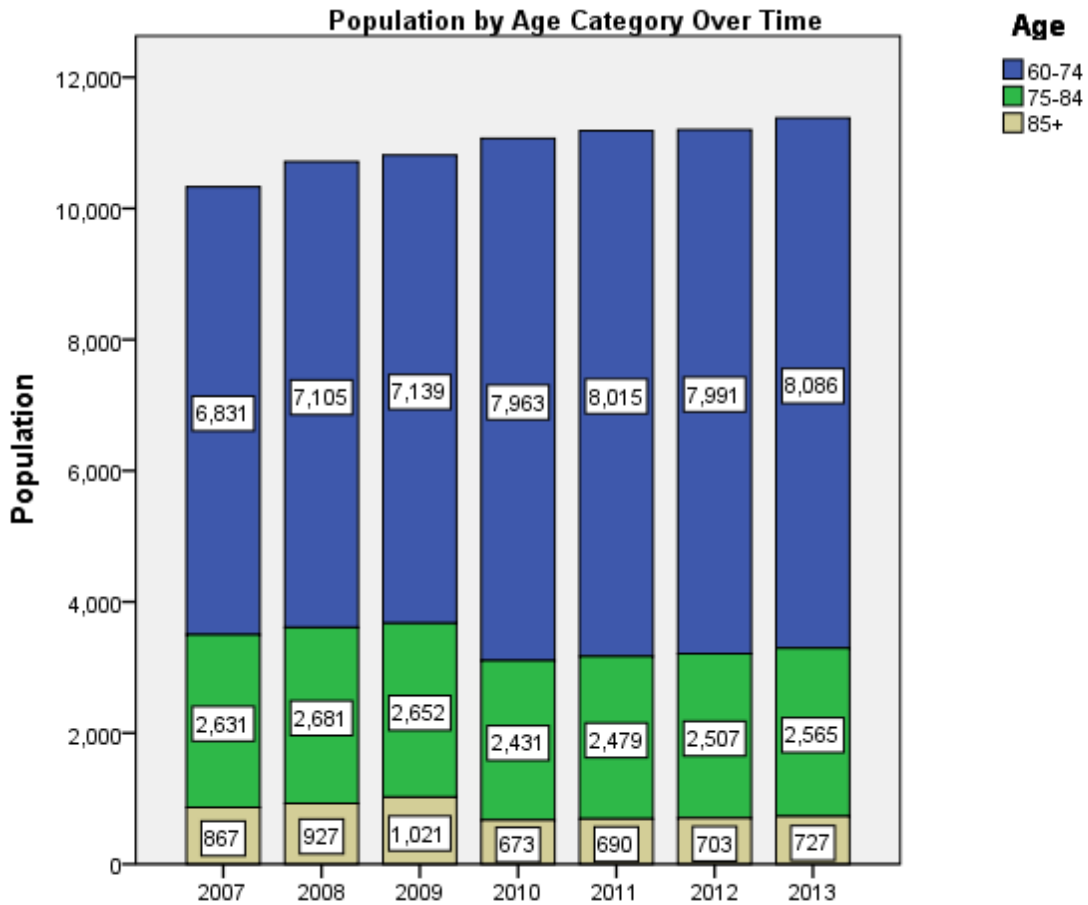
2013 Florida County Profiles

Levy (Continued)

Cost of Living	
	Annual Expenses ⁸
Single Elders	
Owner without Mortgage	\$19,212
Renter, one bedroom	\$22,092
Owner with Mortgage	\$27,768
Elder Couple	
Owner without Mortgage	\$31,632
Renter, one bedroom	\$34,512
Owner with Mortgage	\$40,188

Note: Wider Opportunities for Women Elder Economic Security Standard™ Index (Elder Index) measures how much income retired older adults require to meet their basic needs—without public or private assistance. The Elder Index measures basic expenses for elders age 65+ living in the community, not in institutions.

Useful Websites
County Chronic Disease Profile (Levy)
Florida Housing Data Clearinghouse (Levy)
Behavioral Risk Factors (BRFSS) (Levy)





2013 Florida County Profiles

¹ Total Minorities = (60+ Population) – (White Non-Hispanic 60+)

² OSS beds: Optional State Supplementation beds

³ ECC License: Extended Congregate Care License

⁴ LMH License: Limited Mental Health License

⁵ LNS License: Limited Nursing Services License

⁶ With One Type of Disability: 60+ people who have only one type of disability

⁷ Probable Alzheimer's Cases = (65-74 Population x 0.0136) + (75-84 Population x 0.1822) + (85+ Population x 0.4098)

⁸ Annual expenses include: housing, including utilities, taxes, insurance; food; transportation; health care, based on good health; and miscellaneous.

Sources

- Population: Florida Population by County, Age, Race, Ethnicity and Gender provided by Florida Legislature, Office of Economic and Demographic Research
- Financial Status & Living Situation: Department of Elder Affairs calculations based on Florida Population data and 2007-2011 American Community Survey
- Medically Underserved Population (Data as of 7/18/2014): Florida Department of Health and U.S. Department of Health and Human Services
- Grandparents: Department of Elder Affairs calculations based on Florida Population data and 2007-2011 American Community Survey, Special Tabulation on Aging
- Skilled Nursing Facility Utilization, Adult Day Care, Adult Family Care Home, Ambulatory Surgical Centers, Assisted Living Facilities, Home Health Agencies, Homemakers & Companion Service Companies, Hospitals: Florida Agency for Health Care Administration
- Rural Designation: Based on the definition of Rural Designation by Rural Economic Development Initiative
- Medical Professionals: Florida Department of Health
- Driver's License: Florida Department of Highway Safety & Motor Vehicles
- Food Stamps: Florida Department of Children and Families
- Registered Voters (Data as of 1/31/2014) : Florida Department of State
- Households with Cost Burden Above 30% and income below 50% Area Median Income: The Shimberg Center for Housing Studies
- Median Household Incomes: U.S. Census Bureau: State and County QuickFacts
- Medicaid & Medicare Eligibility and Medicaid Eligibility: Florida Agency for Health Care Administration
- Veterans Demographics: Florida Department of Veterans' Affairs
- Disability Status: Department of Elder Affairs calculations based on Florida Population data and 2009-2011 American Community Survey Data
- Probable Alzheimer's Cases: Department of Elder Affairs calculations based on Florida Population data and Alzheimer's by Age in 2011 Alzheimer's Disease Facts and Figures report at http://www.alz.org/documents_custom/Facts_2011/ALZ_FL.pdf?type=interior_map&facts=undefined&facts=facts
- English Proficiency: Department of Elder Affairs calculations based on Florida Population data and 2007-2011 American Community Survey, Special Tabulation on Aging
- Cost of Living (Data as of 7/18/2014): Wider Opportunities for Women Elder Economic Security Standard™ Index (Elder Index) at <http://www.basiceconomicsecurity.org/EI/>