

2013 Florida County Profiles

Leon

Population by Age Category		
All Ages	278,377	100.0%
Under 60	234,385	84.2%
60+	43,992	15.8%
65+	29,707	10.7%
70+	18,874	6.8%
75+	11,956	4.3%
80+	7,344	2.6%
85+	3,627	1.3%

Population by Race (60+)		
White	34,595	78.6%
Non-White	9,576	21.8%
Black	8,687	19.7%
Other Minorities	889	2.0%

Population by Ethnicity (60+)		
Total Hispanic	1,028	2.3%
White	878	2.0%
Non-White	150	0.3%
Total Non-Hispanic	42,964	97.7%
Total Minorities ¹	10,275	23.4%

Population by Gender (60+)		
Population 60+	43,992	15.8%
Male	19,518	44.4%
Female	24,474	55.6%

Financial Status (60+, % 60+)		
Below Poverty Guideline	2,815	6.4%
Below 125% of Poverty Guideline	4,419	10.0%
Minorities Below Poverty Guideline	1,368	3.1%
Minorities Below 125% of Poverty Guideline	2,221	5.0%

Medically Underserved (65+)		
Total Medically Underserved	8,952	
Medically Underserved Populations - Living in Areas Defined as Having Medically Underserved Populations	8,952	
Medically Underserved Areas - Living in Medically Underserved Areas	0	

Living Situation (60+)		
Living Alone	11,044	
Male	2,788	
Female	8,256	

Grandparents (60+)	
Total 60+ Living With Own Grandchildren (Under Age 18)	1,549
Grandparent Responsible for Own Grandchildren (Under Age 18)	489
Grandparent Not Responsible for Own Grandchildren (Under Age 18)	1,054
60+ Not Living With Own Grandchildren (Under Age 18)	41,442

Skilled Nursing Facility Utilization	
SNF Beds	816
Community Beds	744
Sheltered Beds	72
Veterans Administration Beds	0
Other Beds	0
SNFs With Beds	7
Community Beds	6
Sheltered Beds	1
Veterans Administration Beds	0
Other Beds	0
SNFs With Community Beds	6
Community Bed Days	271,560
Community Patient Days	248,897
Medicaid Patient Days	150,806
Occupancy Rate	91.7%
Percent Medicaid	60.6%

Adult Day Care	
Facilities	2
Capacity	84

Adult Family Care Homes	
Homes	2
Beds	10

Home Health Agencies	
Agencies	17
Medicaid Certified Agencies	6
Medicare Certified Agencies	9

Homemaker & Companion Service Companies	
Companies	31

Ambulatory Surgical Centers	
Facilities	12
Operating Rooms	27
Recovery Beds	76



2013 Florida County Profiles

Leon (Continued)

Rural Designation	
Rural (Yes/No)	NO

Assisted Living Facilities	
Total Beds	588
OSS Beds ²	11
Non-OSS Beds	577
Total Facilities	10
Facilities With ECC License ³	6
Facilities With LMH License ⁴	1
Facilities With LNS License ⁵	4

Hospitals	
Hospitals	5
Hospitals With Skilled Nursing Units	1
Hospital Beds	1,165
Skilled Nursing Unit Beds	113

Medical Professionals	
Medical Doctors	
Licensed	739
Limited License	2
Critical Need Area License	10
Restricted	0
Medical Faculty Certificate	1
Public Health Certificate	0
Specialties	
Licensed Podiatric Physicians	11
Licensed Osteopathic Physicians	28
Licensed Chiropractic Physicians	56
Registered Nurses	
Licensed Registered Nurses	3,113

Driver's License	
Drivers With Florida Driver's License - All Ages	193,815
Drivers With Florida Driver's License - Age 60+	42,359
Percent of Drivers With Florida Driver's License - Age 60+	36.7%

Food Stamps (60+)	
Participants (60+)	2,249
Potentially Eligible	4,419
Food Stamp Participation Rate (60+)	50.9%

Registered Voters	
Registered to Vote in Florida - All Ages	187,369
Registered to Vote in Florida - Age 60+	40,321
Percent of Population Registered to Vote in Florida - Age 60+	21.5%

Households With Cost Burden Above 30% and Income Below 50% Area Median Income (65+) (2010)	
Elder Households	16,838
Percent of All Households	16.5%

Median Household Income (All Ages)	
2008-2012	\$45,915

Medicaid & Medicare Eligibility	
Medicaid Eligible - All Ages	37,253
Medicaid Eligible - 60+	3,423
Dual Eligible - All Ages	5,136
Dual Eligible - 60+	2,939

Veterans	
Total	14,601
Age 45-64	7,365
Age 65-84	6,185
Age 85+	1,051

Disability Status (60+)	
With One Type of Disability ⁶	5,418
Hearing	4,618
Vision	1,871
Cognitive	3,380
Ambulatory	7,739
Self-Care	2,401
Independent Living	5,021
With Two or More Disabilities	6,633
With No Disabilities	32,822
Probable Alzheimer's Cases ⁷	3,246

English Proficiency (60+)	
With Limited English Proficiency	541

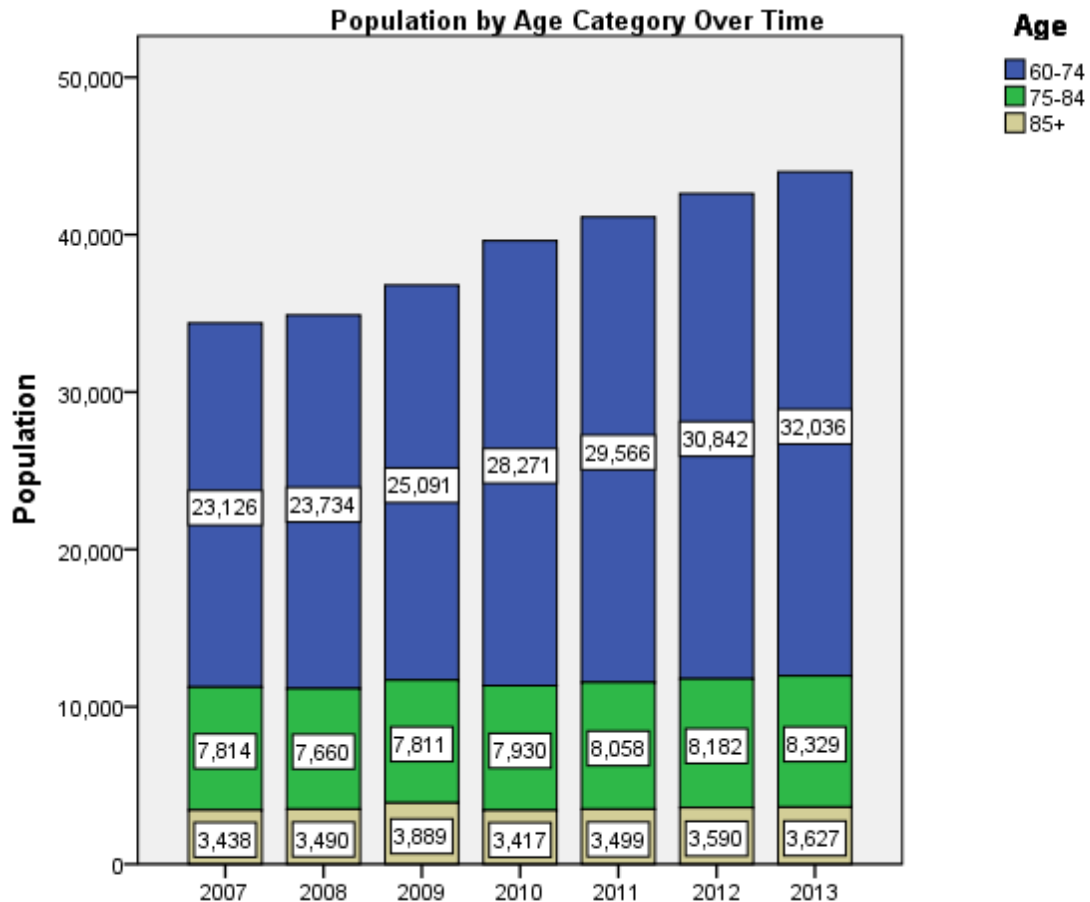
2013 Florida County Profiles

Leon (Continued)

Cost of Living	
	Annual Expenses ⁸
Single Elders	
Owner without Mortgage	\$19,068
Renter, one bedroom	\$23,040
Owner with Mortgage	\$28,392
Elder Couple	
Owner without Mortgage	\$29,388
Renter, one bedroom	\$33,360
Owner with Mortgage	\$38,712

Note: Wider Opportunities for Women Elder Economic Security Standard™ Index (Elder Index) measures how much income retired older adults require to meet their basic needs—without public or private assistance. The Elder Index measures basic expenses for elders age 65+ living in the community, not in institutions.

Useful Websites
County Chronic Disease Profile (Leon)
Florida Housing Data Clearinghouse (Leon)
Behavioral Risk Factors (BRFSS) (Leon)





2013 Florida County Profiles

¹ Total Minorities = (60+ Population) – (White Non-Hispanic 60+)

² OSS beds: Optional State Supplementation beds

³ ECC License: Extended Congregate Care License

⁴ LMH License: Limited Mental Health License

⁵ LNS License: Limited Nursing Services License

⁶ With One Type of Disability: 60+ people who have only one type of disability

⁷ Probable Alzheimer's Cases = (65-74 Population x 0.0136) + (75-84 Population x 0.1822) + (85+ Population x 0.4098)

⁸ Annual expenses include: housing, including utilities, taxes, insurance; food; transportation; health care, based on good health; and miscellaneous.

Sources

- Population: Florida Population by County, Age, Race, Ethnicity and Gender provided by Florida Legislature, Office of Economic and Demographic Research
- Financial Status & Living Situation: Department of Elder Affairs calculations based on Florida Population data and 2007-2011 American Community Survey
- Medically Underserved Population (Data as of 7/18/2014): Florida Department of Health and U.S. Department of Health and Human Services
- Grandparents: Department of Elder Affairs calculations based on Florida Population data and 2007-2011 American Community Survey, Special Tabulation on Aging
- Skilled Nursing Facility Utilization, Adult Day Care, Adult Family Care Home, Ambulatory Surgical Centers, Assisted Living Facilities, Home Health Agencies, Homemakers & Companion Service Companies, Hospitals: Florida Agency for Health Care Administration
- Rural Designation: Based on the definition of Rural Designation by Rural Economic Development Initiative
- Medical Professionals: Florida Department of Health
- Driver's License: Florida Department of Highway Safety & Motor Vehicles
- Food Stamps: Florida Department of Children and Families
- Registered Voters (Data as of 1/31/2014) : Florida Department of State
- Households with Cost Burden Above 30% and income below 50% Area Median Income: The Shimberg Center for Housing Studies
- Median Household Incomes: U.S. Census Bureau: State and County QuickFacts
- Medicaid & Medicare Eligibility and Medicaid Eligibility: Florida Agency for Health Care Administration
- Veterans Demographics: Florida Department of Veterans' Affairs
- Disability Status: Department of Elder Affairs calculations based on Florida Population data and 2009-2011 American Community Survey Data
- Probable Alzheimer's Cases: Department of Elder Affairs calculations based on Florida Population data and Alzheimer's by Age in 2011 Alzheimer's Disease Facts and Figures report at http://www.alz.org/documents_custom/Facts_2011/ALZ_FL.pdf?type=interior_map&facts=undefined&facts=facts
- English Proficiency: Department of Elder Affairs calculations based on Florida Population data and 2007-2011 American Community Survey, Special Tabulation on Aging
- Cost of Living (Data as of 7/18/2014): Wider Opportunities for Women Elder Economic Security Standard™ Index (Elder Index) at <http://www.basiceconomicsecurity.org/EI/>