



2013 Florida County Profiles

Lee

Population by Age Category		
All Ages	643,367	100.0%
Under 60	441,953	68.7%
60+	201,414	31.3%
65+	153,521	23.9%
70+	105,521	16.4%
75+	66,273	10.3%
80+	39,017	6.1%
85+	17,922	2.8%

Population by Race (60+)		
White	194,466	96.6%
Non-White	9,644	4.8%
Black	7,359	3.7%
Other Minorities	2,285	1.1%

Population by Ethnicity (60+)		
Total Hispanic	11,456	5.7%
White	10,582	5.3%
Non-White	874	0.4%
Total Non-Hispanic	189,958	94.3%
Total Minorities ¹	17,530	8.7%

Population by Gender (60+)		
Population 60+	201,414	31.3%
Male	92,728	46.0%
Female	108,686	54.0%

Financial Status (60+, % 60+)		
Below Poverty Guideline	14,984	7.4%
Below 125% of Poverty Guideline	22,713	11.3%
Minorities Below Poverty Guideline	3,232	1.6%
Minorities Below 125% of Poverty Guideline	4,693	2.3%

Medically Underserved (65+)		
Total Medically Underserved	40,279	
Medically Underserved Populations - Living in Areas Defined as Having Medically Underserved Populations	40,279	
Medically Underserved Areas - Living in Medically Underserved Areas	0	

Living Situation (60+)		
Living Alone	42,247	
Male	13,255	
Female	28,992	

Grandparents (60+)	
Total 60+ Living With Own Grandchildren (Under Age 18)	5,830
Grandparent Responsible for Own Grandchildren (Under Age 18)	1,158
Grandparent Not Responsible for Own Grandchildren (Under Age 18)	4,671
60+ Not Living With Own Grandchildren (Under Age 18)	192,786

Skilled Nursing Facility Utilization	
SNF Beds	2,172
Community Beds	2,018
Sheltered Beds	154
Veterans Administration Beds	0
Other Beds	0
SNFs With Beds	21
Community Beds	18
Sheltered Beds	3
Veterans Administration Beds	0
Other Beds	0
SNFs With Community Beds	18
Community Bed Days	736,570
Community Patient Days	612,587
Medicaid Patient Days	349,934
Occupancy Rate	83.2%
Percent Medicaid	57.1%

Adult Day Care	
Facilities	10
Capacity	520

Adult Family Care Homes	
Homes	18
Beds	83

Home Health Agencies	
Agencies	62
Medicaid Certified Agencies	14
Medicare Certified Agencies	40

Homemaker & Companion Service Companies	
Companies	48

Ambulatory Surgical Centers	
Facilities	28
Operating Rooms	63
Recovery Beds	165



2013 Florida County Profiles

Lee (Continued)

Rural Designation	
Rural (Yes/No)	NO

Assisted Living Facilities	
Total Beds	2,351
OSS Beds ²	150
Non-OSS Beds	2,201
Total Facilities	39
Facilities With ECC License ³	9
Facilities With LMH License ⁴	3
Facilities With LNS License ⁵	24

Hospitals	
Hospitals	6
Hospitals With Skilled Nursing Units	0
Hospital Beds	1,614
Skilled Nursing Unit Beds	0

Medical Professionals	
Medical Doctors	
Licensed	1,459
Limited License	7
Critical Need Area License	3
Restricted	0
Medical Faculty Certificate	1
Public Health Certificate	0
Specialties	
Licensed Podiatric Physicians	52
Licensed Osteopathic Physicians	229
Licensed Chiropractic Physicians	185
Registered Nurses	
Licensed Registered Nurses	7,731

Driver's License	
Drivers With Florida Driver's License - All Ages	497,983
Drivers With Florida Driver's License - Age 60+	182,957
Percent of Drivers With Florida Driver's License - Age 60+	37.1%

Food Stamps (60+)	
Participants (60+)	10,248
Potentially Eligible	22,713
Food Stamp Participation Rate (60+)	45.1%

Registered Voters	
Registered to Vote in Florida - All Ages	396,025
Registered to Vote in Florida - Age 60+	172,929
Percent of Population Registered to Vote in Florida - Age 60+	43.7%

Households With Cost Burden Above 30% and Income Below 50% Area Median Income (65+) (2010)	
Elder Households	92,063
Percent of All Households	12.8%

Median Household Income (All Ages)	
2008-2012	\$48,453

Medicaid & Medicare Eligibility	
Medicaid Eligible - All Ages	106,014
Medicaid Eligible - 60+	12,633
Dual Eligible - All Ages	16,790
Dual Eligible - 60+	10,965

Veterans	
Total	47,718
Age 45-64	15,656
Age 65-84	26,836
Age 85+	5,226

Disability Status (60+)	
With One Type of Disability ⁶	27,416
Hearing	22,571
Vision	8,211
Cognitive	13,142
Ambulatory	32,661
Self-Care	10,333
Independent Living	20,163
With Two or More Disabilities	25,884
With No Disabilities	152,872
Probable Alzheimer's Cases ⁷	17,345

English Proficiency (60+)	
With Limited English Proficiency	6,138

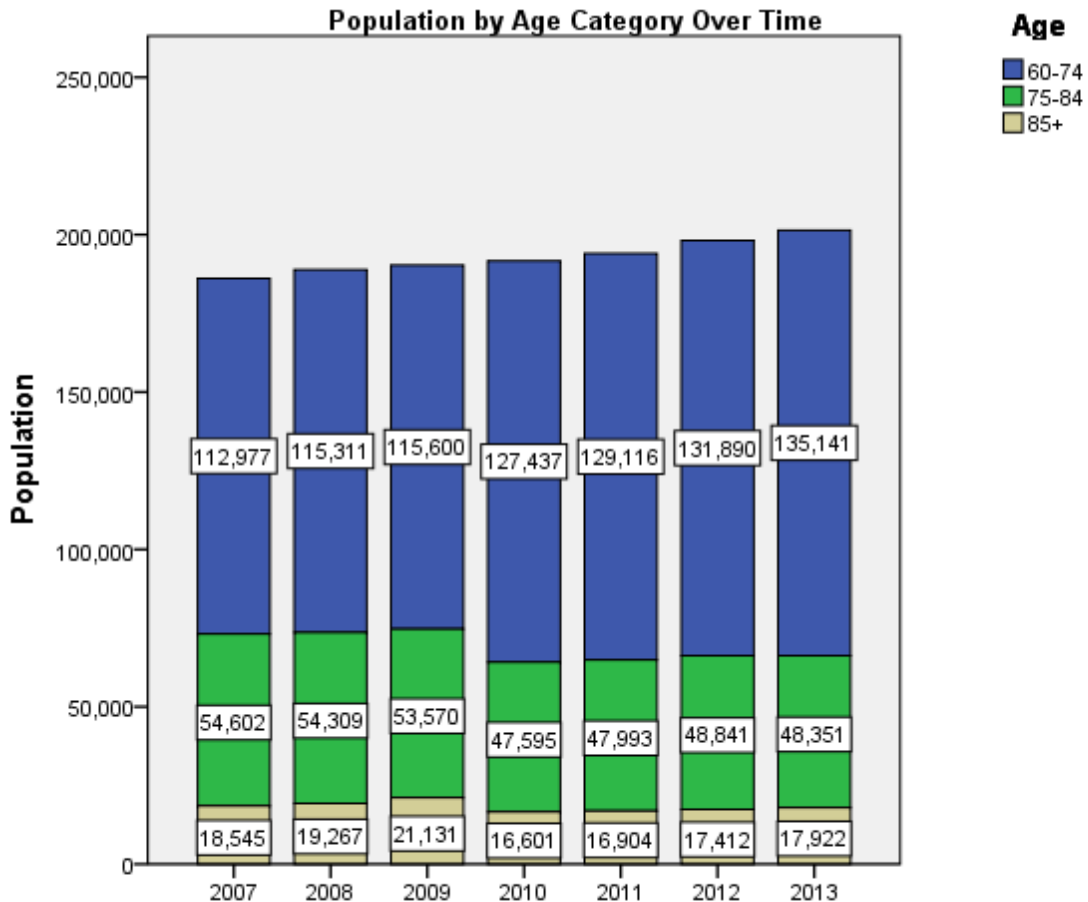
2013 Florida County Profiles

Lee (Continued)

Cost of Living	
	Annual Expenses ⁸
Single Elders	
Owner without Mortgage	\$20,724
Renter, one bedroom	\$24,960
Owner with Mortgage	\$31,884
Elder Couple	
Owner without Mortgage	\$31,320
Renter, one bedroom	\$35,556
Owner with Mortgage	\$42,480

Note: Wider Opportunities for Women Elder Economic Security Standard™ Index (Elder Index) measures how much income retired older adults require to meet their basic needs—without public or private assistance. The Elder Index measures basic expenses for elders age 65+ living in the community, not in institutions.

Useful Websites
County Chronic Disease Profile (Lee)
Florida Housing Data Clearinghouse (Lee)
Behavioral Risk Factors (BRFSS) (Lee)





2013 Florida County Profiles

¹ Total Minorities = (60+ Population) – (White Non-Hispanic 60+)

² OSS beds: Optional State Supplementation beds

³ ECC License: Extended Congregate Care License

⁴ LMH License: Limited Mental Health License

⁵ LNS License: Limited Nursing Services License

⁶ With One Type of Disability: 60+ people who have only one type of disability

⁷ Probable Alzheimer's Cases = (65-74 Population x 0.0136) + (75-84 Population x 0.1822) + (85+ Population x 0.4098)

⁸ Annual expenses include: housing, including utilities, taxes, insurance; food; transportation; health care, based on good health; and miscellaneous.

Sources

- Population: Florida Population by County, Age, Race, Ethnicity and Gender provided by Florida Legislature, Office of Economic and Demographic Research
- Financial Status & Living Situation: Department of Elder Affairs calculations based on Florida Population data and 2007-2011 American Community Survey
- Medically Underserved Population (Data as of 7/18/2014): Florida Department of Health and U.S. Department of Health and Human Services
- Grandparents: Department of Elder Affairs calculations based on Florida Population data and 2007-2011 American Community Survey, Special Tabulation on Aging
- Skilled Nursing Facility Utilization, Adult Day Care, Adult Family Care Home, Ambulatory Surgical Centers, Assisted Living Facilities, Home Health Agencies, Homemakers & Companion Service Companies, Hospitals: Florida Agency for Health Care Administration
- Rural Designation: Based on the definition of Rural Designation by Rural Economic Development Initiative
- Medical Professionals: Florida Department of Health
- Driver's License: Florida Department of Highway Safety & Motor Vehicles
- Food Stamps: Florida Department of Children and Families
- Registered Voters (Data as of 1/31/2014) : Florida Department of State
- Households with Cost Burden Above 30% and income below 50% Area Median Income: The Shimberg Center for Housing Studies
- Median Household Incomes: U.S. Census Bureau: State and County QuickFacts
- Medicaid & Medicare Eligibility and Medicaid Eligibility: Florida Agency for Health Care Administration
- Veterans Demographics: Florida Department of Veterans' Affairs
- Disability Status: Department of Elder Affairs calculations based on Florida Population data and 2009-2011 American Community Survey Data
- Probable Alzheimer's Cases: Department of Elder Affairs calculations based on Florida Population data and Alzheimer's by Age in 2011 Alzheimer's Disease Facts and Figures report at http://www.alz.org/documents_custom/Facts_2011/ALZ_FL.pdf?type=interior_map&facts=undefined&facts=facts
- English Proficiency: Department of Elder Affairs calculations based on Florida Population data and 2007-2011 American Community Survey, Special Tabulation on Aging
- Cost of Living (Data as of 7/18/2014): Wider Opportunities for Women Elder Economic Security Standard™ Index (Elder Index) at <http://www.basiceconomicsecurity.org/EI/>