



2013 Florida County Profiles

Holmes

Population by Age Category		
All Ages	20,022	100.0%
Under 60	15,103	75.4%
60+	4,919	24.6%
65+	3,609	18.0%
70+	2,452	12.2%
75+	1,512	7.6%
80+	834	4.2%
85+	367	1.8%

Population by Race (60+)		
White	4,737	96.3%
Non-White	187	3.8%
Black	132	2.7%
Other Minorities	55	1.1%

Population by Ethnicity (60+)		
Total Hispanic	48	1.0%
White	45	0.9%
Non-White	3	0.1%
Total Non-Hispanic	4,871	99.0%
Total Minorities ¹	227	4.6%

Population by Gender (60+)		
Population 60+	4,919	24.6%
Male	2,327	47.3%
Female	2,592	52.7%

Financial Status (60+, % 60+)		
Below Poverty Guideline	744	15.1%
Below 125% of Poverty Guideline	1,236	25.1%
Minorities Below Poverty Guideline	52	1.1%
Minorities Below 125% of Poverty Guideline	72	1.5%

Medically Underserved (65+)		
Total Medically Underserved	1,577	
Medically Underserved Populations - Living in Areas Defined as Having Medically Underserved Populations	1,577	
Medically Underserved Areas - Living in Medically Underserved Areas	0	

Living Situation (60+)		
Living Alone	1,221	
Male	398	
Female	823	

Grandparents (60+)	
Total 60+ Living With Own Grandchildren (Under Age 18)	214
Grandparent Responsible for Own Grandchildren (Under Age 18)	80
Grandparent Not Responsible for Own Grandchildren (Under Age 18)	140
60+ Not Living With Own Grandchildren (Under Age 18)	4,515

Skilled Nursing Facility Utilization	
SNF Beds	180
Community Beds	180
Sheltered Beds	0
Veterans Administration Beds	0
Other Beds	0
SNFs With Beds	1
Community Beds	1
Sheltered Beds	0
Veterans Administration Beds	0
Other Beds	0
SNFs With Community Beds	1
Community Bed Days	65,700
Community Patient Days	60,533
Medicaid Patient Days	48,000
Occupancy Rate	92.1%
Percent Medicaid	79.3%

Adult Day Care	
Facilities	0
Capacity	0

Adult Family Care Homes	
Homes	1
Beds	4

Home Health Agencies	
Agencies	1
Medicaid Certified Agencies	1
Medicare Certified Agencies	1

Homemaker & Companion Service Companies	
Companies	1

Ambulatory Surgical Centers	
Facilities	0
Operating Rooms	0
Recovery Beds	0



2013 Florida County Profiles

Holmes (Continued)

Rural Designation	
Rural (Yes/No)	YES

Assisted Living Facilities	
Total Beds	86
OSS Beds ²	86
Non-OSS Beds	0
Total Facilities	2
Facilities With ECC License ³	0
Facilities With LMH License ⁴	2
Facilities With LNS License ⁵	1

Hospitals	
Hospitals	1
Hospitals With Skilled Nursing Units	0
Hospital Beds	20
Skilled Nursing Unit Beds	0

Medical Professionals	
Medical Doctors	
Licensed	13
Limited License	0
Critical Need Area License	1
Restricted	0
Medical Faculty Certificate	0
Public Health Certificate	0
Specialties	
Licensed Podiatric Physicians	0
Licensed Osteopathic Physicians	1
Licensed Chiropractic Physicians	1
Registered Nurses	
Licensed Registered Nurses	151

Driver's License	
Drivers With Florida Driver's License - All Ages	13,842
Drivers With Florida Driver's License - Age 60+	4,267
Percent of Drivers With Florida Driver's License - Age 60+	21.6%

Food Stamps (60+)	
Participants (60+)	340
Potentially Eligible	1,236
Food Stamp Participation Rate (60+)	27.5%

Registered Voters	
Registered to Vote in Florida - All Ages	11,031
Registered to Vote in Florida - Age 60+	3,763
Percent of Population Registered to Vote in Florida - Age 60+	34.1%

Households With Cost Burden Above 30% and Income Below 50% Area Median Income (65+) (2010)	
Elder Households	2,465
Percent of All Households	15.8%

Median Household Income (All Ages)	
2008-2012	\$34,928

Medicaid & Medicare Eligibility	
Medicaid Eligible - All Ages	5,076
Medicaid Eligible - 60+	950
Dual Eligible - All Ages	1,264
Dual Eligible - 60+	851

Veterans	
Total	1,624
Age 45-64	778
Age 65-84	722
Age 85+	124

Disability Status (60+)	
With One Type of Disability ⁶	0
Hearing	0
Vision	0
Cognitive	0
Ambulatory	0
Self-Care	0
Independent Living	0
With Two or More Disabilities	0
With No Disabilities	0
Probable Alzheimer's Cases ⁷	388

English Proficiency (60+)	
With Limited English Proficiency	40

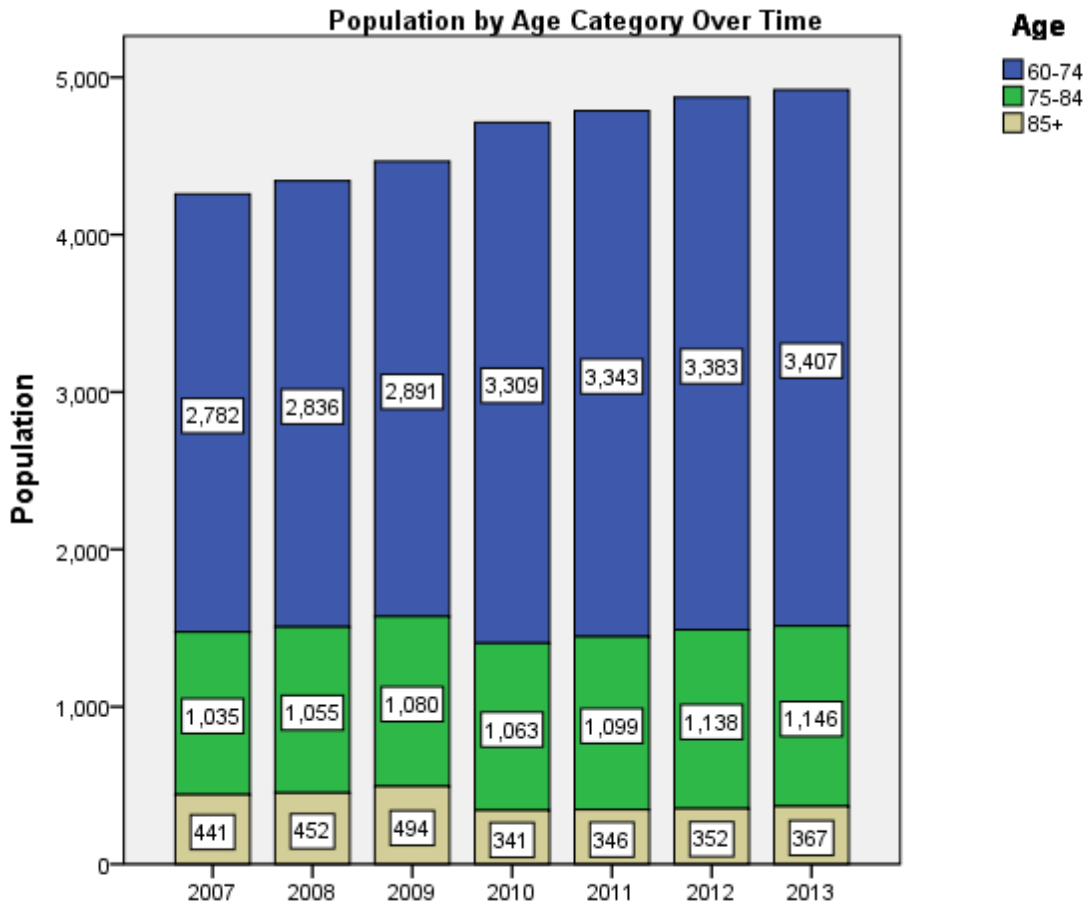
2013 Florida County Profiles

Holmes (Continued)

Cost of Living	
	Annual Expenses ⁸
Single Elders	
Owner without Mortgage	\$19,008
Renter, one bedroom	\$22,176
Owner with Mortgage	\$27,504
Elder Couple	
Owner without Mortgage	\$31,440
Renter, one bedroom	\$34,608
Owner with Mortgage	\$39,936

Note: Wider Opportunities for Women Elder Economic Security Standard™ Index (Elder Index) measures how much income retired older adults require to meet their basic needs—without public or private assistance. The Elder Index measures basic expenses for elders age 65+ living in the community, not in institutions.

Useful Websites
County Chronic Disease Profile (Holmes)
Florida Housing Data Clearinghouse (Holmes)
Behavioral Risk Factors (BRFSS) (Holmes)





2013 Florida County Profiles

¹ Total Minorities = (60+ Population) – (White Non-Hispanic 60+)

² OSS beds: Optional State Supplementation beds

³ ECC License: Extended Congregate Care License

⁴ LMH License: Limited Mental Health License

⁵ LNS License: Limited Nursing Services License

⁶ With One Type of Disability: 60+ people who have only one type of disability

⁷ Probable Alzheimer's Cases = (65-74 Population x 0.0136) + (75-84 Population x 0.1822) + (85+ Population x 0.4098)

⁸ Annual expenses include: housing, including utilities, taxes, insurance; food; transportation; health care, based on good health; and miscellaneous.

Sources

- Population: Florida Population by County, Age, Race, Ethnicity and Gender provided by Florida Legislature, Office of Economic and Demographic Research
- Financial Status & Living Situation: Department of Elder Affairs calculations based on Florida Population data and 2007-2011 American Community Survey
- Medically Underserved Population (Data as of 7/18/2014): Florida Department of Health and U.S. Department of Health and Human Services
- Grandparents: Department of Elder Affairs calculations based on Florida Population data and 2007-2011 American Community Survey, Special Tabulation on Aging
- Skilled Nursing Facility Utilization, Adult Day Care, Adult Family Care Home, Ambulatory Surgical Centers, Assisted Living Facilities, Home Health Agencies, Homemakers & Companion Service Companies, Hospitals: Florida Agency for Health Care Administration
- Rural Designation: Based on the definition of Rural Designation by Rural Economic Development Initiative
- Medical Professionals: Florida Department of Health
- Driver's License: Florida Department of Highway Safety & Motor Vehicles
- Food Stamps: Florida Department of Children and Families
- Registered Voters (Data as of 1/31/2014) : Florida Department of State
- Households with Cost Burden Above 30% and income below 50% Area Median Income: The Shimberg Center for Housing Studies
- Median Household Incomes: U.S. Census Bureau: State and County QuickFacts
- Medicaid & Medicare Eligibility and Medicaid Eligibility: Florida Agency for Health Care Administration
- Veterans Demographics: Florida Department of Veterans' Affairs
- Disability Status: Department of Elder Affairs calculations based on Florida Population data and 2009-2011 American Community Survey Data
- Probable Alzheimer's Cases: Department of Elder Affairs calculations based on Florida Population data and Alzheimer's by Age in 2011 Alzheimer's Disease Facts and Figures report at http://www.alz.org/documents_custom/Facts_2011/ALZ_FL.pdf?type=interior_map&facts=undefined&facts=facts
- English Proficiency: Department of Elder Affairs calculations based on Florida Population data and 2007-2011 American Community Survey, Special Tabulation on Aging
- Cost of Living (Data as of 7/18/2014): Wider Opportunities for Women Elder Economic Security Standard™ Index (Elder Index) at <http://www.basiceconomicsecurity.org/EI/>