



2013 Florida County Profiles

Hillsborough

Population by Age Category		
All Ages	1,276,410	100.0%
Under 60	1,050,087	82.3%
60+	226,323	17.7%
65+	160,051	12.5%
70+	107,133	8.4%
75+	69,025	5.4%
80+	41,606	3.3%
85+	20,082	1.6%

Population by Race (60+)		
White	191,906	84.8%
Non-White	34,020	15.0%
Black	26,886	11.9%
Other Minorities	7,134	3.2%

Population by Ethnicity (60+)		
Total Hispanic	39,210	17.3%
White	35,667	15.8%
Non-White	3,543	1.6%
Total Non-Hispanic	187,113	82.7%
Total Minorities ¹	70,084	31.0%

Population by Gender (60+)		
Population 60+	226,323	17.7%
Male	101,675	44.9%
Female	124,648	55.1%

Financial Status (60+, % 60+)		
Below Poverty Guideline	22,486	9.9%
Below 125% of Poverty Guideline	33,543	14.8%
Minorities Below Poverty Guideline	11,271	5.0%
Minorities Below 125% of Poverty Guideline	16,586	7.3%

Medically Underserved (65+)	
Total Medically Underserved	24,697
Medically Underserved Populations - Living in Areas Defined as Having Medically Underserved Populations	23,200
Medically Underserved Areas - Living in Medically Underserved Areas	1,497

Living Situation (60+)	
Living Alone	53,675
Male	16,196
Female	37,479

Grandparents (60+)	
Total 60+ Living With Own Grandchildren (Under Age 18)	14,934
Grandparent Responsible for Own Grandchildren (Under Age 18)	3,919
Grandparent Not Responsible for Own Grandchildren (Under Age 18)	11,009
60+ Not Living With Own Grandchildren (Under Age 18)	207,097

Skilled Nursing Facility Utilization	
SNF Beds	3,951
Community Beds	3,761
Sheltered Beds	190
Veterans Administration Beds	0
Other Beds	0
SNFs With Beds	33
Community Beds	30
Sheltered Beds	3
Veterans Administration Beds	0
Other Beds	0
SNFs With Community Beds	30
Community Bed Days	1,372,765
Community Patient Days	1,239,429
Medicaid Patient Days	736,126
Occupancy Rate	90.3%
Percent Medicaid	59.4%

Adult Day Care	
Facilities	8
Capacity	274

Adult Family Care Homes	
Homes	42
Beds	173

Home Health Agencies	
Agencies	132
Medicaid Certified Agencies	35
Medicare Certified Agencies	75

Homemaker & Companion Service Companies	
Companies	117

Ambulatory Surgical Centers	
Facilities	27
Operating Rooms	84
Recovery Beds	256



2013 Florida County Profiles

Hillsborough (Continued)

Rural Designation	
Rural (Yes/No)	NO

Assisted Living Facilities	
Total Beds	6,154
OSS Beds ²	1,739
Non-OSS Beds	4,415
Total Facilities	227
Facilities With ECC License ³	22
Facilities With LMH License ⁴	43
Facilities With LNS License ⁵	29

Hospitals	
Hospitals	16
Hospitals With Skilled Nursing Units	1
Hospital Beds	4,041
Skilled Nursing Unit Beds	15

Medical Professionals	
Medical Doctors	
Licensed	3,932
Limited License	5
Critical Need Area License	14
Restricted	0
Medical Faculty Certificate	2
Public Health Certificate	0
Specialties	
Licensed Podiatric Physicians	62
Licensed Osteopathic Physicians	340
Licensed Chiropractic Physicians	294
Registered Nurses	
Licensed Registered Nurses	15,466

Driver's License	
Drivers With Florida Driver's License - All Ages	952,275
Drivers With Florida Driver's License - Age 60+	205,247
Percent of Drivers With Florida Driver's License - Age 60+	44.1%

Food Stamps (60+)	
Participants (60+)	24,819
Potentially Eligible	33,543
Food Stamp Participation Rate (60+)	74.0%

Registered Voters	
Registered to Vote in Florida - All Ages	755,268
Registered to Vote in Florida - Age 60+	189,598
Percent of Population Registered to Vote in Florida - Age 60+	25.1%

Households With Cost Burden Above 30% and Income Below 50% Area Median Income (65+) (2010)	
Elder Households	96,633
Percent of All Households	17.7%

Median Household Income (All Ages)	
2008-2012	\$49,450

Medicaid & Medicare Eligibility	
Medicaid Eligible - All Ages	253,896
Medicaid Eligible - 60+	32,509
Dual Eligible - All Ages	43,120
Dual Eligible - 60+	28,106

Veterans	
Total	71,807
Age 45-64	37,782
Age 65-84	28,656
Age 85+	5,369

Disability Status (60+)	
With One Type of Disability ⁶	33,184
Hearing	26,394
Vision	14,215
Cognitive	21,439
Ambulatory	50,793
Self-Care	18,373
Independent Living	30,977
With Two or More Disabilities	41,557
With No Disabilities	156,365
Probable Alzheimer's Cases ⁷	18,390

English Proficiency (60+)	
With Limited English Proficiency	16,383

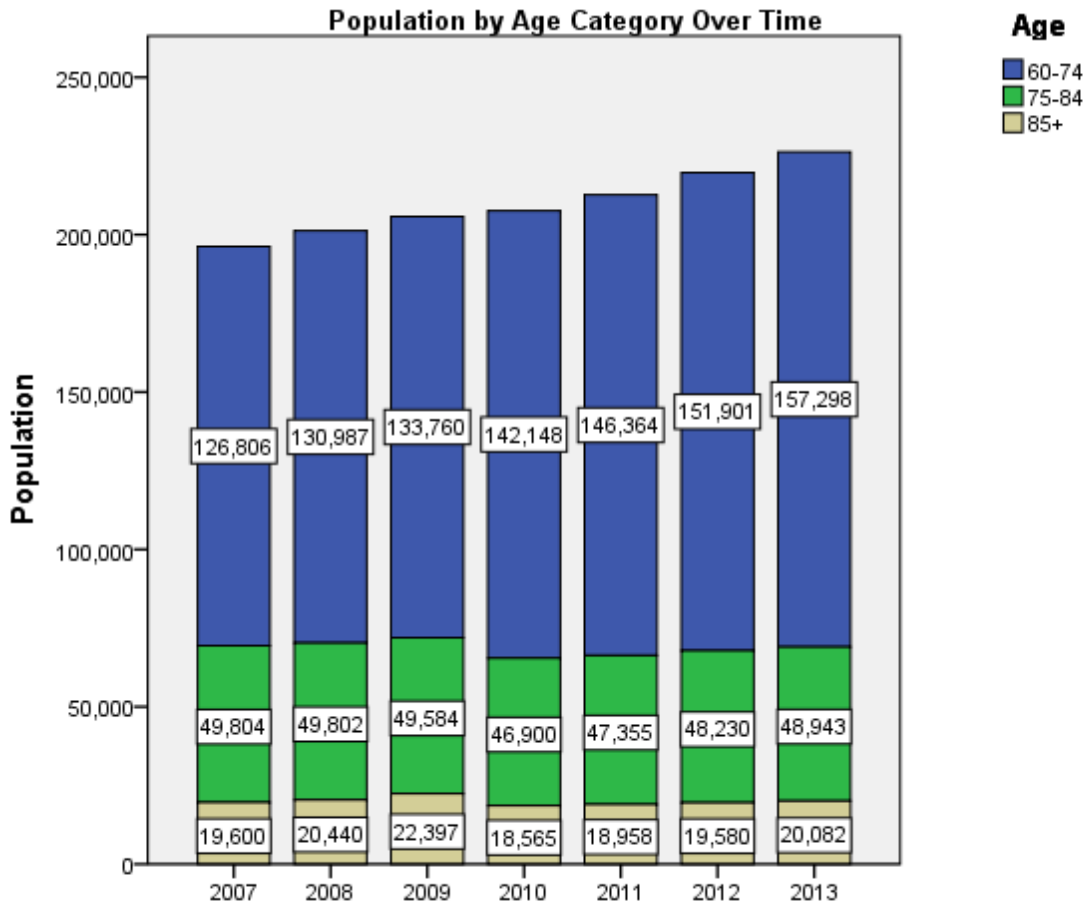
2013 Florida County Profiles

Hillsborough (Continued)

Cost of Living	
	Annual Expenses ⁸
Single Elders	
Owner without Mortgage	\$18,144
Renter, one bedroom	\$22,440
Owner with Mortgage	\$27,276
Elder Couple	
Owner without Mortgage	\$27,576
Renter, one bedroom	\$31,872
Owner with Mortgage	\$36,708

Note: Wider Opportunities for Women Elder Economic Security Standard™ Index (Elder Index) measures how much income retired older adults require to meet their basic needs—without public or private assistance. The Elder Index measures basic expenses for elders age 65+ living in the community, not in institutions.

Useful Websites
County Chronic Disease Profile (Hillsborough)
Florida Housing Data Clearinghouse (Hillsborough)
Behavioral Risk Factors (BRFSS) (Hillsborough)





2013 Florida County Profiles

¹ Total Minorities = (60+ Population) – (White Non-Hispanic 60+)

² OSS beds: Optional State Supplementation beds

³ ECC License: Extended Congregate Care License

⁴ LMH License: Limited Mental Health License

⁵ LNS License: Limited Nursing Services License

⁶ With One Type of Disability: 60+ people who have only one type of disability

⁷ Probable Alzheimer's Cases = (65-74 Population x 0.0136) + (75-84 Population x 0.1822) + (85+ Population x 0.4098)

⁸ Annual expenses include: housing, including utilities, taxes, insurance; food; transportation; health care, based on good health; and miscellaneous.

Sources

- Population: Florida Population by County, Age, Race, Ethnicity and Gender provided by Florida Legislature, Office of Economic and Demographic Research
- Financial Status & Living Situation: Department of Elder Affairs calculations based on Florida Population data and 2007-2011 American Community Survey
- Medically Underserved Population (Data as of 7/18/2014): Florida Department of Health and U.S. Department of Health and Human Services
- Grandparents: Department of Elder Affairs calculations based on Florida Population data and 2007-2011 American Community Survey, Special Tabulation on Aging
- Skilled Nursing Facility Utilization, Adult Day Care, Adult Family Care Home, Ambulatory Surgical Centers, Assisted Living Facilities, Home Health Agencies, Homemakers & Companion Service Companies, Hospitals: Florida Agency for Health Care Administration
- Rural Designation: Based on the definition of Rural Designation by Rural Economic Development Initiative
- Medical Professionals: Florida Department of Health
- Driver's License: Florida Department of Highway Safety & Motor Vehicles
- Food Stamps: Florida Department of Children and Families
- Registered Voters (Data as of 1/31/2014) : Florida Department of State
- Households with Cost Burden Above 30% and income below 50% Area Median Income: The Shimberg Center for Housing Studies
- Median Household Incomes: U.S. Census Bureau: State and County QuickFacts
- Medicaid & Medicare Eligibility and Medicaid Eligibility: Florida Agency for Health Care Administration
- Veterans Demographics: Florida Department of Veterans' Affairs
- Disability Status: Department of Elder Affairs calculations based on Florida Population data and 2009-2011 American Community Survey Data
- Probable Alzheimer's Cases: Department of Elder Affairs calculations based on Florida Population data and Alzheimer's by Age in 2011 Alzheimer's Disease Facts and Figures report at http://www.alz.org/documents_custom/Facts_2011/ALZ_FL.pdf?type=interior_map&facts=undefined&facts=facts
- English Proficiency: Department of Elder Affairs calculations based on Florida Population data and 2007-2011 American Community Survey, Special Tabulation on Aging
- Cost of Living (Data as of 7/18/2014): Wider Opportunities for Women Elder Economic Security Standard™ Index (Elder Index) at <http://www.basiceconomicsecurity.org/EI/>