



2013 Florida County Profiles

Highlands

Population by Age Category		
All Ages	99,092	100.0%
Under 60	59,427	60.0%
60+	39,665	40.0%
65+	32,249	32.5%
70+	23,804	24.0%
75+	15,706	15.9%
80+	9,466	9.6%
85+	4,433	4.5%

Population by Race (60+)		
White	37,618	94.8%
Non-White	2,213	5.6%
Black	1,766	4.5%
Other Minorities	447	1.1%

Population by Ethnicity (60+)		
Total Hispanic	2,338	5.9%
White	2,164	5.5%
Non-White	174	0.4%
Total Non-Hispanic	37,327	94.1%
Total Minorities ¹	4,211	10.6%

Population by Gender (60+)		
Population 60+	39,665	40.0%
Male	18,178	45.8%
Female	21,487	54.2%

Financial Status (60+, % 60+)		
Below Poverty Guideline	4,434	11.2%
Below 125% of Poverty Guideline	6,157	15.5%
Minorities Below Poverty Guideline	1,259	3.2%
Minorities Below 125% of Poverty Guideline	1,496	3.8%

Medically Underserved (65+)	
Total Medically Underserved	13,872
Medically Underserved Populations - Living in Areas Defined as Having Medically Underserved Populations	13,872
Medically Underserved Areas - Living in Medically Underserved Areas	0

Living Situation (60+)	
Living Alone	8,431
Male	2,658
Female	5,773

Grandparents (60+)	
Total 60+ Living With Own Grandchildren (Under Age 18)	1,037
Grandparent Responsible for Own Grandchildren (Under Age 18)	325
Grandparent Not Responsible for Own Grandchildren (Under Age 18)	712
60+ Not Living With Own Grandchildren (Under Age 18)	37,840

Skilled Nursing Facility Utilization	
SNF Beds	598
Community Beds	598
Sheltered Beds	0
Veterans Administration Beds	0
Other Beds	0
SNFs With Beds	5
Community Beds	5
Sheltered Beds	0
Veterans Administration Beds	0
Other Beds	0
SNFs With Community Beds	5
Community Bed Days	218,270
Community Patient Days	198,425
Medicaid Patient Days	114,090
Occupancy Rate	90.9%
Percent Medicaid	57.5%

Adult Day Care	
Facilities	1
Capacity	60

Adult Family Care Homes	
Homes	1
Beds	5

Home Health Agencies	
Agencies	10
Medicaid Certified Agencies	1
Medicare Certified Agencies	9

Homemaker & Companion Service Companies	
Companies	11

Ambulatory Surgical Centers	
Facilities	3
Operating Rooms	7
Recovery Beds	22



2013 Florida County Profiles

Highlands (Continued)

Rural Designation	
Rural (Yes/No)	YES

Assisted Living Facilities	
Total Beds	768
OSS Beds ²	154
Non-OSS Beds	614
Total Facilities	8
Facilities With ECC License ³	0
Facilities With LMH License ⁴	1
Facilities With LNS License ⁵	6

Hospitals	
Hospitals	4
Hospitals With Skilled Nursing Units	0
Hospital Beds	323
Skilled Nursing Unit Beds	0

Medical Professionals	
Medical Doctors	
Licensed	168
Limited License	0
Critical Need Area License	3
Restricted	0
Medical Faculty Certificate	0
Public Health Certificate	0
Specialties	
Licensed Podiatric Physicians	6
Licensed Osteopathic Physicians	11
Licensed Chiropractic Physicians	18
Registered Nurses	
Licensed Registered Nurses	1,100

Driver's License	
Drivers With Florida Driver's License - All Ages	72,192
Drivers With Florida Driver's License - Age 60+	31,826
Percent of Drivers With Florida Driver's License - Age 60+	38.7%

Food Stamps (60+)	
Participants (60+)	1,906
Potentially Eligible	6,157
Food Stamp Participation Rate (60+)	31.0%

Registered Voters	
Registered to Vote in Florida - All Ages	59,678
Registered to Vote in Florida - Age 60+	30,011
Percent of Population Registered to Vote in Florida - Age 60+	50.3%

Households With Cost Burden Above 30% and Income Below 50% Area Median Income (65+) (2010)	
Elder Households	16,873
Percent of All Households	12.1%

Median Household Income (All Ages)	
2008-2012	\$35,350

Medicaid & Medicare Eligibility	
Medicaid Eligible - All Ages	19,674
Medicaid Eligible - 60+	3,109
Dual Eligible - All Ages	4,153
Dual Eligible - 60+	2,826

Veterans	
Total	8,905
Age 45-64	2,623
Age 65-84	5,269
Age 85+	1,013

Disability Status (60+)	
With One Type of Disability ⁶	6,758
Hearing	5,487
Vision	1,760
Cognitive	3,056
Ambulatory	7,496
Self-Care	2,716
Independent Living	4,872
With Two or More Disabilities	6,006
With No Disabilities	26,123
Probable Alzheimer's Cases ⁷	4,097

English Proficiency (60+)	
With Limited English Proficiency	1,114

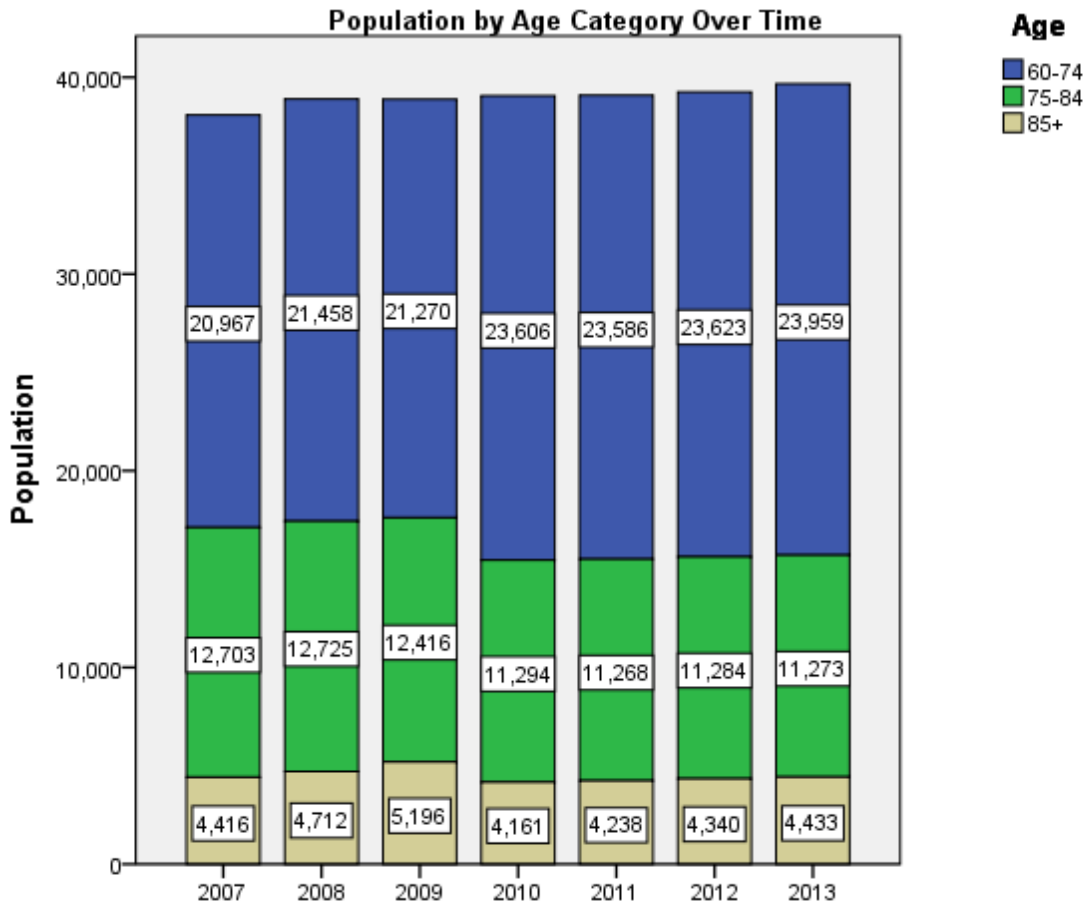
2013 Florida County Profiles

Highlands (Continued)

Cost of Living	
	Annual Expenses ⁸
Single Elders	
Owner without Mortgage	\$19,416
Renter, one bedroom	\$23,100
Owner with Mortgage	\$26,748
Elder Couple	
Owner without Mortgage	\$31,836
Renter, one bedroom	\$35,520
Owner with Mortgage	\$39,168

Note: Wider Opportunities for Women Elder Economic Security Standard™ Index (Elder Index) measures how much income retired older adults require to meet their basic needs—without public or private assistance. The Elder Index measures basic expenses for elders age 65+ living in the community, not in institutions.

Useful Websites
County Chronic Disease Profile (Highlands)
Florida Housing Data Clearinghouse (Highlands)
Behavioral Risk Factors (BRFSS) (Highlands)





2013 Florida County Profiles

¹ Total Minorities = (60+ Population) – (White Non-Hispanic 60+)

² OSS beds: Optional State Supplementation beds

³ ECC License: Extended Congregate Care License

⁴ LMH License: Limited Mental Health License

⁵ LNS License: Limited Nursing Services License

⁶ With One Type of Disability: 60+ people who have only one type of disability

⁷ Probable Alzheimer's Cases = (65-74 Population x 0.0136) + (75-84 Population x 0.1822) + (85+ Population x 0.4098)

⁸ Annual expenses include: housing, including utilities, taxes, insurance; food; transportation; health care, based on good health; and miscellaneous.

Sources

- Population: Florida Population by County, Age, Race, Ethnicity and Gender provided by Florida Legislature, Office of Economic and Demographic Research
- Financial Status & Living Situation: Department of Elder Affairs calculations based on Florida Population data and 2007-2011 American Community Survey
- Medically Underserved Population (Data as of 7/18/2014): Florida Department of Health and U.S. Department of Health and Human Services
- Grandparents: Department of Elder Affairs calculations based on Florida Population data and 2007-2011 American Community Survey, Special Tabulation on Aging
- Skilled Nursing Facility Utilization, Adult Day Care, Adult Family Care Home, Ambulatory Surgical Centers, Assisted Living Facilities, Home Health Agencies, Homemakers & Companion Service Companies, Hospitals: Florida Agency for Health Care Administration
- Rural Designation: Based on the definition of Rural Designation by Rural Economic Development Initiative
- Medical Professionals: Florida Department of Health
- Driver's License: Florida Department of Highway Safety & Motor Vehicles
- Food Stamps: Florida Department of Children and Families
- Registered Voters (Data as of 1/31/2014) : Florida Department of State
- Households with Cost Burden Above 30% and income below 50% Area Median Income: The Shimberg Center for Housing Studies
- Median Household Incomes: U.S. Census Bureau: State and County QuickFacts
- Medicaid & Medicare Eligibility and Medicaid Eligibility: Florida Agency for Health Care Administration
- Veterans Demographics: Florida Department of Veterans' Affairs
- Disability Status: Department of Elder Affairs calculations based on Florida Population data and 2009-2011 American Community Survey Data
- Probable Alzheimer's Cases: Department of Elder Affairs calculations based on Florida Population data and Alzheimer's by Age in 2011 Alzheimer's Disease Facts and Figures report at http://www.alz.org/documents_custom/Facts_2011/ALZ_FL.pdf?type=interior_map&facts=undefined&facts=facts
- English Proficiency: Department of Elder Affairs calculations based on Florida Population data and 2007-2011 American Community Survey, Special Tabulation on Aging
- Cost of Living (Data as of 7/18/2014): Wider Opportunities for Women Elder Economic Security Standard™ Index (Elder Index) at <http://www.basiceconomicsecurity.org/EI/>