



2013 Florida County Profiles

Hernando

Population by Age Category		
All Ages	173,808	100.0%
Under 60	115,638	66.5%
60+	58,170	33.5%
65+	45,504	26.2%
70+	32,636	18.8%
75+	21,579	12.4%
80+	13,060	7.5%
85+	6,038	3.5%

Population by Race (60+)		
White	56,038	96.3%
Non-White	2,463	4.2%
Black	1,875	3.2%
Other Minorities	588	1.0%

Population by Ethnicity (60+)		
Total Hispanic	3,378	5.8%
White	3,102	5.3%
Non-White	276	0.5%
Total Non-Hispanic	54,792	94.2%
Total Minorities ¹	5,234	9.0%

Population by Gender (60+)		
Population 60+	58,170	33.5%
Male	26,502	45.6%
Female	31,668	54.4%

Financial Status (60+, % 60+)		
Below Poverty Guideline	4,079	7.0%
Below 125% of Poverty Guideline	6,725	11.6%
Minorities Below Poverty Guideline	442	0.8%
Minorities Below 125% of Poverty Guideline	869	1.5%

Medically Underserved (65+)	
Total Medically Underserved	15,525
Medically Underserved Populations - Living in Areas Defined as Having Medically Underserved Populations	15,525
Medically Underserved Areas - Living in Medically Underserved Areas	0

Living Situation (60+)	
Living Alone	12,416
Male	3,893
Female	8,523

Grandparents (60+)	
Total 60+ Living With Own Grandchildren (Under Age 18)	1,928
Grandparent Responsible for Own Grandchildren (Under Age 18)	726
Grandparent Not Responsible for Own Grandchildren (Under Age 18)	1,197
60+ Not Living With Own Grandchildren (Under Age 18)	55,531

Skilled Nursing Facility Utilization	
SNF Beds	660
Community Beds	660
Sheltered Beds	0
Veterans Administration Beds	0
Other Beds	0
SNFs With Beds	5
Community Beds	5
Sheltered Beds	0
Veterans Administration Beds	0
Other Beds	0
SNFs With Community Beds	5
Community Bed Days	240,900
Community Patient Days	210,487
Medicaid Patient Days	132,466
Occupancy Rate	87.4%
Percent Medicaid	62.9%

Adult Day Care	
Facilities	0
Capacity	0

Adult Family Care Homes	
Homes	16
Beds	76

Home Health Agencies	
Agencies	19
Medicaid Certified Agencies	5
Medicare Certified Agencies	17

Homemaker & Companion Service Companies	
Companies	16

Ambulatory Surgical Centers	
Facilities	4
Operating Rooms	9
Recovery Beds	39



2013 Florida County Profiles

Hernando (Continued)

Rural Designation	
Rural (Yes/No)	NO

Assisted Living Facilities	
Total Beds	521
OSS Beds ²	26
Non-OSS Beds	495
Total Facilities	22
Facilities With ECC License ³	1
Facilities With LMH License ⁴	0
Facilities With LNS License ⁵	7

Hospitals	
Hospitals	5
Hospitals With Skilled Nursing Units	0
Hospital Beds	652
Skilled Nursing Unit Beds	0

Medical Professionals	
Medical Doctors	
Licensed	222
Limited License	0
Critical Need Area License	1
Restricted	0
Medical Faculty Certificate	0
Public Health Certificate	0
Specialties	
Licensed Podiatric Physicians	12
Licensed Osteopathic Physicians	30
Licensed Chiropractic Physicians	40
Registered Nurses	
Licensed Registered Nurses	2,306

Driver's License	
Drivers With Florida Driver's License - All Ages	138,806
Drivers With Florida Driver's License - Age 60+	53,747
Percent of Drivers With Florida Driver's License - Age 60+	23.1%

Food Stamps (60+)	
Participants (60+)	2,640
Potentially Eligible	6,725
Food Stamp Participation Rate (60+)	39.3%

Registered Voters	
Registered to Vote in Florida - All Ages	122,216
Registered to Vote in Florida - Age 60+	52,544
Percent of Population Registered to Vote in Florida - Age 60+	43.0%

Households With Cost Burden Above 30% and Income Below 50% Area Median Income (65+) (2010)	
Elder Households	31,148
Percent of All Households	11.5%

Median Household Income (All Ages)	
2008-2012	\$41,098

Medicaid & Medicare Eligibility	
Medicaid Eligible - All Ages	32,494
Medicaid Eligible - 60+	4,259
Dual Eligible - All Ages	6,726
Dual Eligible - 60+	3,869

Veterans	
Total	18,678
Age 45-64	6,965
Age 65-84	9,756
Age 85+	1,957

Disability Status (60+)	
With One Type of Disability ⁶	9,522
Hearing	8,699
Vision	3,181
Cognitive	4,674
Ambulatory	12,171
Self-Care	3,646
Independent Living	7,037
With Two or More Disabilities	10,013
With No Disabilities	39,182
Probable Alzheimer's Cases ⁷	5,633

English Proficiency (60+)	
With Limited English Proficiency	1,084

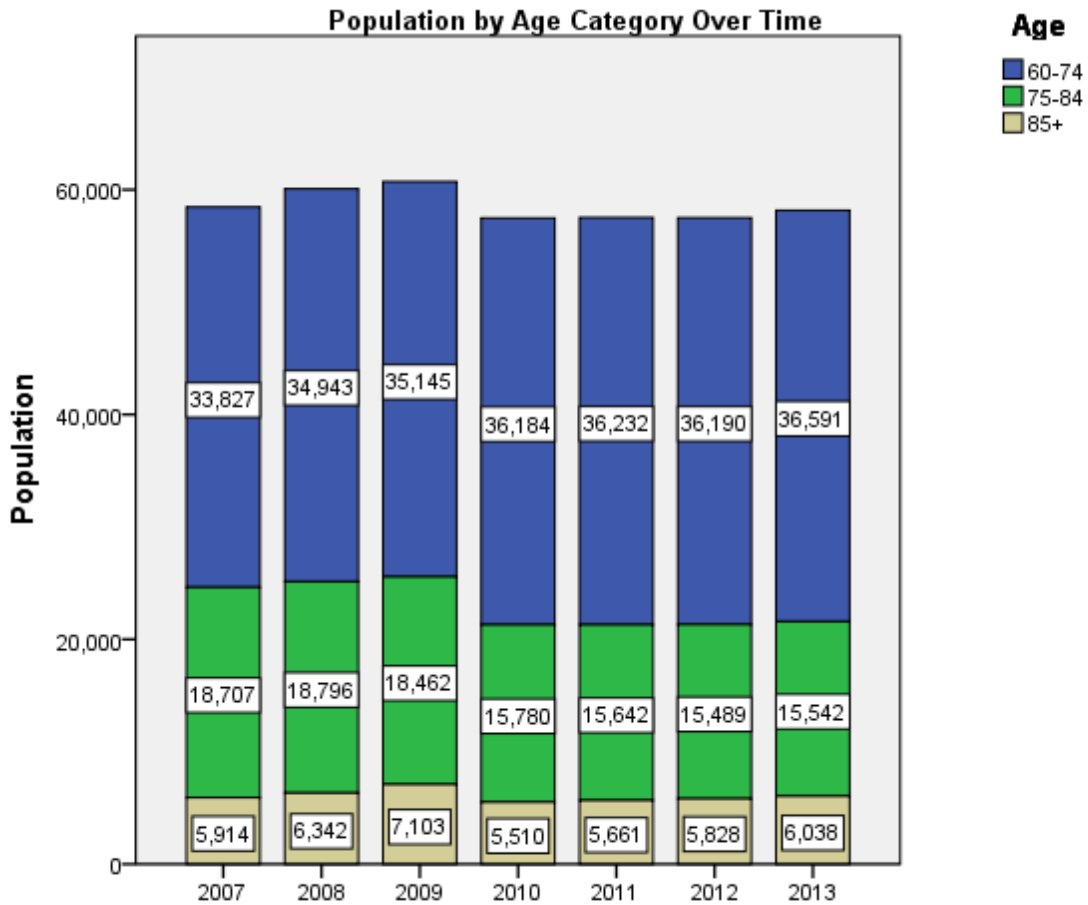
2013 Florida County Profiles

Hernando (Continued)

Cost of Living	
	Annual Expenses ⁸
Single Elders	
Owner without Mortgage	\$15,912
Renter, one bedroom	\$21,288
Owner with Mortgage	\$23,724
Elder Couple	
Owner without Mortgage	\$24,408
Renter, one bedroom	\$29,784
Owner with Mortgage	\$32,220

Note: Wider Opportunities for Women Elder Economic Security Standard™ Index (Elder Index) measures how much income retired older adults require to meet their basic needs—without public or private assistance. The Elder Index measures basic expenses for elders age 65+ living in the community, not in institutions.

Useful Websites
County Chronic Disease Profile (Hernando)
Florida Housing Data Clearinghouse (Hernando)
Behavioral Risk Factors (BRFSS) (Hernando)





2013 Florida County Profiles

¹ Total Minorities = (60+ Population) – (White Non-Hispanic 60+)

² OSS beds: Optional State Supplementation beds

³ ECC License: Extended Congregate Care License

⁴ LMH License: Limited Mental Health License

⁵ LNS License: Limited Nursing Services License

⁶ With One Type of Disability: 60+ people who have only one type of disability

⁷ Probable Alzheimer's Cases = (65-74 Population x 0.0136) + (75-84 Population x 0.1822) + (85+ Population x 0.4098)

⁸ Annual expenses include: housing, including utilities, taxes, insurance; food; transportation; health care, based on good health; and miscellaneous.

Sources

- Population: Florida Population by County, Age, Race, Ethnicity and Gender provided by Florida Legislature, Office of Economic and Demographic Research
- Financial Status & Living Situation: Department of Elder Affairs calculations based on Florida Population data and 2007-2011 American Community Survey
- Medically Underserved Population (Data as of 7/18/2014): Florida Department of Health and U.S. Department of Health and Human Services
- Grandparents: Department of Elder Affairs calculations based on Florida Population data and 2007-2011 American Community Survey, Special Tabulation on Aging
- Skilled Nursing Facility Utilization, Adult Day Care, Adult Family Care Home, Ambulatory Surgical Centers, Assisted Living Facilities, Home Health Agencies, Homemakers & Companion Service Companies, Hospitals: Florida Agency for Health Care Administration
- Rural Designation: Based on the definition of Rural Designation by Rural Economic Development Initiative
- Medical Professionals: Florida Department of Health
- Driver's License: Florida Department of Highway Safety & Motor Vehicles
- Food Stamps: Florida Department of Children and Families
- Registered Voters (Data as of 1/31/2014) : Florida Department of State
- Households with Cost Burden Above 30% and income below 50% Area Median Income: The Shimberg Center for Housing Studies
- Median Household Incomes: U.S. Census Bureau: State and County QuickFacts
- Medicaid & Medicare Eligibility and Medicaid Eligibility: Florida Agency for Health Care Administration
- Veterans Demographics: Florida Department of Veterans' Affairs
- Disability Status: Department of Elder Affairs calculations based on Florida Population data and 2009-2011 American Community Survey Data
- Probable Alzheimer's Cases: Department of Elder Affairs calculations based on Florida Population data and Alzheimer's by Age in 2011 Alzheimer's Disease Facts and Figures report at http://www.alz.org/documents_custom/Facts_2011/ALZ_FL.pdf?type=interior_map&facts=undefined&facts=facts
- English Proficiency: Department of Elder Affairs calculations based on Florida Population data and 2007-2011 American Community Survey, Special Tabulation on Aging
- Cost of Living (Data as of 7/18/2014): Wider Opportunities for Women Elder Economic Security Standard™ Index (Elder Index) at <http://www.basiceconomicsecurity.org/EI/>