



2013 Florida County Profiles

Hardee

Population by Age Category		
All Ages	27,682	100.0%
Under 60	22,697	82.0%
60+	4,985	18.0%
65+	3,662	13.2%
70+	2,498	9.0%
75+	1,566	5.7%
80+	916	3.3%
85+	427	1.5%

Population by Race (60+)		
White	4,607	92.4%
Non-White	406	8.1%
Black	342	6.9%
Other Minorities	64	1.3%

Population by Ethnicity (60+)		
Total Hispanic	665	13.3%
White	643	12.9%
Non-White	22	0.4%
Total Non-Hispanic	4,320	86.7%
Total Minorities ¹	1,021	20.5%

Population by Gender (60+)		
Population 60+	4,985	18.0%
Male	2,426	48.7%
Female	2,559	51.3%

Financial Status (60+, % 60+)		
Below Poverty Guideline	897	18.0%
Below 125% of Poverty Guideline	1,305	26.2%
Minorities Below Poverty Guideline	377	7.6%
Minorities Below 125% of Poverty Guideline	498	10.0%

Medically Underserved (65+)		
Total Medically Underserved	3,368	
Medically Underserved Populations - Living in Areas Defined as Having Medically Underserved Populations	0	
Medically Underserved Areas - Living in Medically Underserved Areas	3,368	

Living Situation (60+)		
Living Alone	919	
Male	277	
Female	642	

Grandparents (60+)	
Total 60+ Living With Own Grandchildren (Under Age 18)	163
Grandparent Responsible for Own Grandchildren (Under Age 18)	61
Grandparent Not Responsible for Own Grandchildren (Under Age 18)	97
60+ Not Living With Own Grandchildren (Under Age 18)	4,587

Skilled Nursing Facility Utilization	
SNF Beds	104
Community Beds	104
Sheltered Beds	0
Veterans Administration Beds	0
Other Beds	0
SNFs With Beds	2
Community Beds	2
Sheltered Beds	0
Veterans Administration Beds	0
Other Beds	0
SNFs With Community Beds	2
Community Bed Days	37,960
Community Patient Days	30,801
Medicaid Patient Days	17,296
Occupancy Rate	81.1%
Percent Medicaid	56.2%

Adult Day Care	
Facilities	0
Capacity	0

Adult Family Care Homes	
Homes	0
Beds	0

Home Health Agencies	
Agencies	0
Medicaid Certified Agencies	0
Medicare Certified Agencies	0

Homemaker & Companion Service Companies	
Companies	2

Ambulatory Surgical Centers	
Facilities	0
Operating Rooms	0
Recovery Beds	0



2013 Florida County Profiles

Hardee (Continued)

Rural Designation	
Rural (Yes/No)	YES

Assisted Living Facilities	
Total Beds	72
OSS Beds ²	44
Non-OSS Beds	28
Total Facilities	6
Facilities With ECC License ³	0
Facilities With LMH License ⁴	1
Facilities With LNS License ⁵	2

Hospitals	
Hospitals	1
Hospitals With Skilled Nursing Units	0
Hospital Beds	25
Skilled Nursing Unit Beds	0

Medical Professionals	
Medical Doctors	
Licensed	7
Limited License	0
Critical Need Area License	0
Restricted	0
Medical Faculty Certificate	0
Public Health Certificate	0
Specialties	
Licensed Podiatric Physicians	0
Licensed Osteopathic Physicians	0
Licensed Chiropractic Physicians	1
Registered Nurses	
Licensed Registered Nurses	119

Driver's License	
Drivers With Florida Driver's License - All Ages	15,510
Drivers With Florida Driver's License - Age 60+	4,076
Percent of Drivers With Florida Driver's License - Age 60+	30.1%

Food Stamps (60+)	
Participants (60+)	590
Potentially Eligible	1,305
Food Stamp Participation Rate (60+)	45.2%

Registered Voters	
Registered to Vote in Florida - All Ages	10,764
Registered to Vote in Florida - Age 60+	3,572
Percent of Population Registered to Vote in Florida - Age 60+	33.2%

Households With Cost Burden Above 30% and Income Below 50% Area Median Income (65+) (2010)	
Elder Households	3,224
Percent of All Households	13.5%

Median Household Income (All Ages)	
2008-2012	\$36,115

Medicaid & Medicare Eligibility	
Medicaid Eligible - All Ages	7,452
Medicaid Eligible - 60+	837
Dual Eligible - All Ages	1,078
Dual Eligible - 60+	749

Veterans	
Total	1,162
Age 45-64	455
Age 65-84	581
Age 85+	126

Disability Status (60+)	
With One Type of Disability ⁶	802
Hearing	501
Vision	424
Cognitive	557
Ambulatory	1,062
Self-Care	465
Independent Living	746
With Two or More Disabilities	976
With No Disabilities	3,182
Probable Alzheimer's Cases ⁷	411

English Proficiency (60+)	
With Limited English Proficiency	567

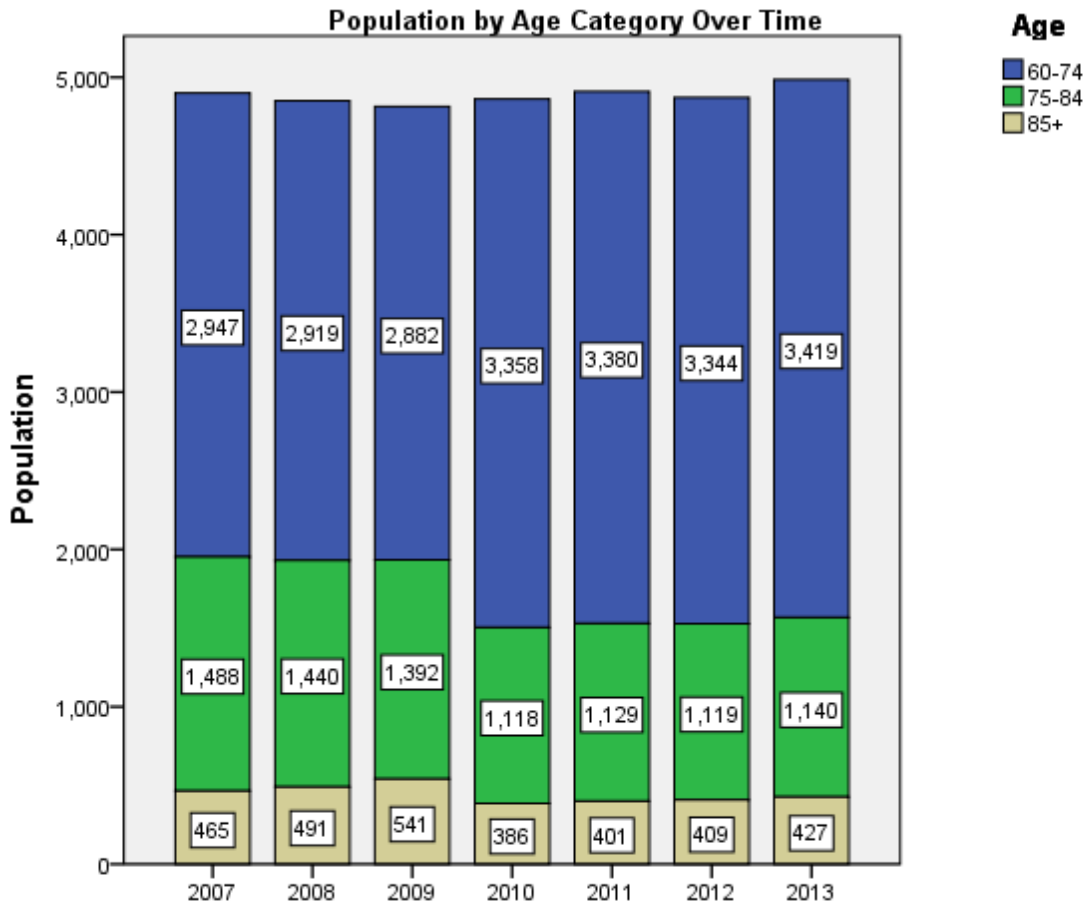
2013 Florida County Profiles

Hardee (Continued)

Cost of Living	
	Annual Expenses ⁸
Single Elders	
Owner without Mortgage	\$19,416
Renter, one bedroom	\$23,100
Owner with Mortgage	\$26,748
Elder Couple	
Owner without Mortgage	\$31,836
Renter, one bedroom	\$35,520
Owner with Mortgage	\$39,168

Note: Wider Opportunities for Women Elder Economic Security Standard™ Index (Elder Index) measures how much income retired older adults require to meet their basic needs—without public or private assistance. The Elder Index measures basic expenses for elders age 65+ living in the community, not in institutions.

Useful Websites
County Chronic Disease Profile (Hardee)
Florida Housing Data Clearinghouse (Hardee)
Behavioral Risk Factors (BRFSS) (Hardee)





2013 Florida County Profiles

¹ Total Minorities = (60+ Population) – (White Non-Hispanic 60+)

² OSS beds: Optional State Supplementation beds

³ ECC License: Extended Congregate Care License

⁴ LMH License: Limited Mental Health License

⁵ LNS License: Limited Nursing Services License

⁶ With One Type of Disability: 60+ people who have only one type of disability

⁷ Probable Alzheimer's Cases = (65-74 Population x 0.0136) + (75-84 Population x 0.1822) + (85+ Population x 0.4098)

⁸ Annual expenses include: housing, including utilities, taxes, insurance; food; transportation; health care, based on good health; and miscellaneous.

Sources

- Population: Florida Population by County, Age, Race, Ethnicity and Gender provided by Florida Legislature, Office of Economic and Demographic Research
- Financial Status & Living Situation: Department of Elder Affairs calculations based on Florida Population data and 2007-2011 American Community Survey
- Medically Underserved Population (Data as of 7/18/2014): Florida Department of Health and U.S. Department of Health and Human Services
- Grandparents: Department of Elder Affairs calculations based on Florida Population data and 2007-2011 American Community Survey, Special Tabulation on Aging
- Skilled Nursing Facility Utilization, Adult Day Care, Adult Family Care Home, Ambulatory Surgical Centers, Assisted Living Facilities, Home Health Agencies, Homemakers & Companion Service Companies, Hospitals: Florida Agency for Health Care Administration
- Rural Designation: Based on the definition of Rural Designation by Rural Economic Development Initiative
- Medical Professionals: Florida Department of Health
- Driver's License: Florida Department of Highway Safety & Motor Vehicles
- Food Stamps: Florida Department of Children and Families
- Registered Voters (Data as of 1/31/2014) : Florida Department of State
- Households with Cost Burden Above 30% and income below 50% Area Median Income: The Shimberg Center for Housing Studies
- Median Household Incomes: U.S. Census Bureau: State and County QuickFacts
- Medicaid & Medicare Eligibility and Medicaid Eligibility: Florida Agency for Health Care Administration
- Veterans Demographics: Florida Department of Veterans' Affairs
- Disability Status: Department of Elder Affairs calculations based on Florida Population data and 2009-2011 American Community Survey Data
- Probable Alzheimer's Cases: Department of Elder Affairs calculations based on Florida Population data and Alzheimer's by Age in 2011 Alzheimer's Disease Facts and Figures report at http://www.alz.org/documents_custom/Facts_2011/ALZ_FL.pdf?type=interior_map&facts=undefined&facts=facts
- English Proficiency: Department of Elder Affairs calculations based on Florida Population data and 2007-2011 American Community Survey, Special Tabulation on Aging
- Cost of Living (Data as of 7/18/2014): Wider Opportunities for Women Elder Economic Security Standard™ Index (Elder Index) at <http://www.basiceconomicsecurity.org/EI/>