

# 2013 Florida County Profiles

## Hamilton

Population by Age Category		
All Ages	14,507	100.0%
Under 60	11,439	78.8%
60+	3,068	21.2%
65+	2,124	14.6%
70+	1,341	9.2%
75+	797	5.5%
80+	449	3.1%
85+	212	1.5%

Population by Race (60+)		
White	2,377	77.5%
Non-White	778	25.4%
Black	745	24.3%
Other Minorities	33	1.1%

Population by Ethnicity (60+)		
Total Hispanic	63	2.1%
White	56	1.8%
Non-White	7	0.2%
Total Non-Hispanic	3,005	97.9%
Total Minorities <sup>1</sup>	747	24.4%

Population by Gender (60+)		
Population 60+	3,068	21.2%
Male	1,402	45.7%
Female	1,666	54.3%

Financial Status (60+, % 60+)		
Below Poverty Guideline	490	16.0%
Below 125% of Poverty Guideline	757	24.7%
Minorities Below Poverty Guideline	298	9.7%
Minorities Below 125% of Poverty Guideline	459	15.0%

Medically Underserved (65+)		
Total Medically Underserved	1,712	
Medically Underserved Populations - Living in Areas Defined as Having Medically Underserved Populations	0	
Medically Underserved Areas - Living in Medically Underserved Areas	1,712	

Living Situation (60+)		
Living Alone	770	
Male	278	
Female	492	

Grandparents (60+)	
Total 60+ Living With Own Grandchildren (Under Age 18)	151
Grandparent Responsible for Own Grandchildren (Under Age 18)	73
Grandparent Not Responsible for Own Grandchildren (Under Age 18)	78
60+ Not Living With Own Grandchildren (Under Age 18)	2,750

Skilled Nursing Facility Utilization	
SNF Beds	60
Community Beds	60
Sheltered Beds	0
Veterans Administration Beds	0
Other Beds	0
SNFs With Beds	1
Community Beds	1
Sheltered Beds	0
Veterans Administration Beds	0
Other Beds	0
SNFs With Community Beds	1
Community Bed Days	21,900
Community Patient Days	21,402
Medicaid Patient Days	18,588
Occupancy Rate	97.7%
Percent Medicaid	86.9%

Adult Day Care	
Facilities	0
Capacity	0

Adult Family Care Homes	
Homes	2
Beds	10

Home Health Agencies	
Agencies	0
Medicaid Certified Agencies	0
Medicare Certified Agencies	0

Homemaker & Companion Service Companies	
Companies	1

Ambulatory Surgical Centers	
Facilities	0
Operating Rooms	0
Recovery Beds	0



# 2013 Florida County Profiles

## Hamilton (Continued)

Rural Designation	
Rural (Yes/No)	YES

Assisted Living Facilities	
Total Beds	40
OSS Beds <sup>2</sup>	40
Non-OSS Beds	0
Total Facilities	3
Facilities With ECC License <sup>3</sup>	0
Facilities With LMH License <sup>4</sup>	3
Facilities With LNS License <sup>5</sup>	3

Hospitals	
Hospitals	0
Hospitals With Skilled Nursing Units	0
Hospital Beds	0
Skilled Nursing Unit Beds	0

Medical Professionals	
Medical Doctors	
Licensed	4
Limited License	0
Critical Need Area License	1
Restricted	0
Medical Faculty Certificate	0
Public Health Certificate	0
Specialties	
Licensed Podiatric Physicians	0
Licensed Osteopathic Physicians	1
Licensed Chiropractic Physicians	0
Registered Nurses	
Licensed Registered Nurses	93

Driver's License	
Drivers With Florida Driver's License - All Ages	8,898
Drivers With Florida Driver's License - Age 60+	2,676
Percent of Drivers With Florida Driver's License - Age 60+	35.0%

Food Stamps (60+)	
Participants (60+)	297
Potentially Eligible	757
Food Stamp Participation Rate (60+)	39.2%

Registered Voters	
Registered to Vote in Florida - All Ages	7,701
Registered to Vote in Florida - Age 60+	2,486
Percent of Population Registered to Vote in Florida - Age 60+	32.3%

Households With Cost Burden Above 30% and Income Below 50% Area Median Income (65+) (2010)	
Elder Households	1,379
Percent of All Households	18.3%

Median Household Income (All Ages)	
2008-2012	\$36,875

Medicaid & Medicare Eligibility	
Medicaid Eligible - All Ages	3,564
Medicaid Eligible - 60+	553
Dual Eligible - All Ages	757
Dual Eligible - 60+	496

Veterans	
Total	1,002
Age 45-64	556
Age 65-84	383
Age 85+	63

Disability Status (60+)	
With One Type of Disability <sup>6</sup>	0
Hearing	0
Vision	0
Cognitive	0
Ambulatory	0
Self-Care	0
Independent Living	0
With Two or More Disabilities	0
With No Disabilities	0
Probable Alzheimer's Cases <sup>7</sup>	212

English Proficiency (60+)	
With Limited English Proficiency	56

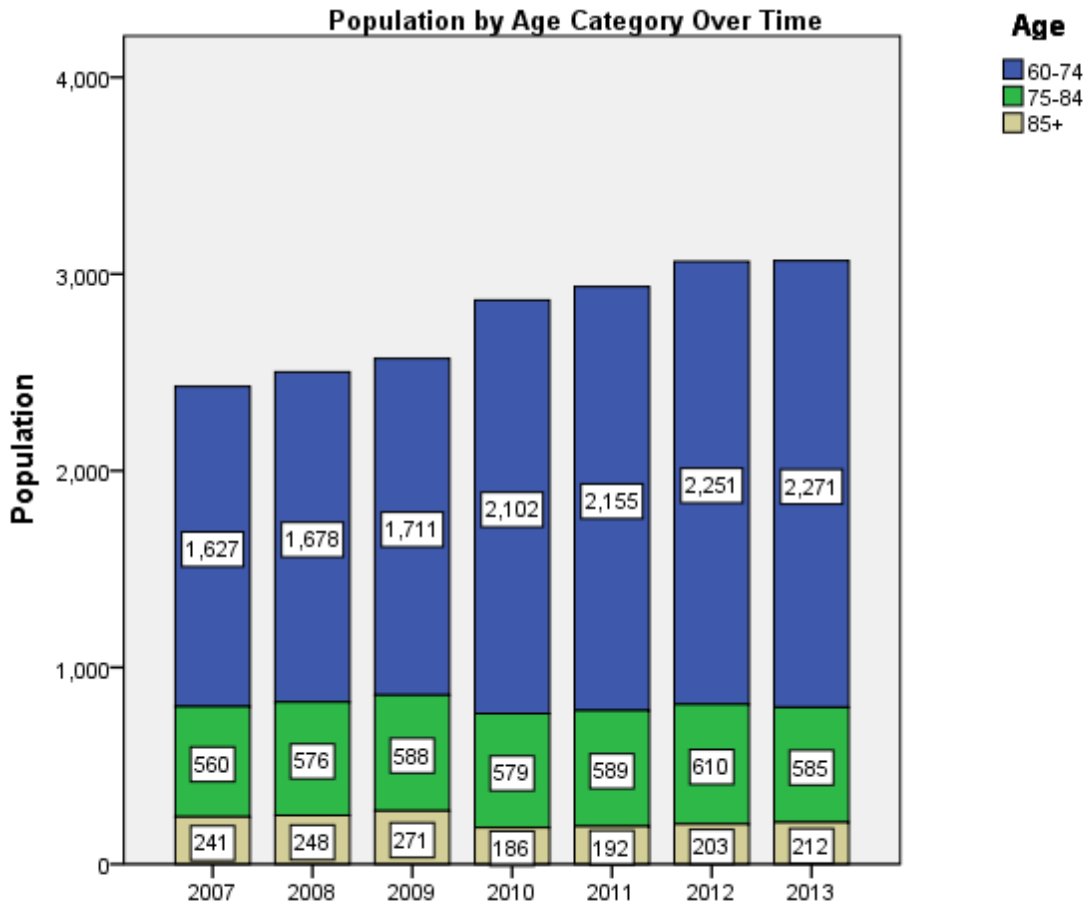
# 2013 Florida County Profiles

## Hamilton (Continued)

Cost of Living	
	Annual Expenses <sup>8</sup>
<b>Single Elders</b>	
Owner without Mortgage	\$19,212
Renter, one bedroom	\$22,092
Owner with Mortgage	\$27,768
<b>Elder Couple</b>	
Owner without Mortgage	\$31,632
Renter, one bedroom	\$34,512
Owner with Mortgage	\$40,188

Note: Wider Opportunities for Women Elder Economic Security Standard™ Index (Elder Index) measures how much income retired older adults require to meet their basic needs—without public or private assistance. The Elder Index measures basic expenses for elders age 65+ living in the community, not in institutions.

Useful Websites
<a href="#">County Chronic Disease Profile (Hamilton)</a>
<a href="#">Florida Housing Data Clearinghouse (Hamilton)</a>
<a href="#">Behavioral Risk Factors (BRFSS) (Hamilton)</a>





# 2013 Florida County Profiles

---

<sup>1</sup> Total Minorities = (60+ Population) – (White Non-Hispanic 60+)

<sup>2</sup> OSS beds: Optional State Supplementation beds

<sup>3</sup> ECC License: Extended Congregate Care License

<sup>4</sup> LMH License: Limited Mental Health License

<sup>5</sup> LNS License: Limited Nursing Services License

<sup>6</sup> With One Type of Disability: 60+ people who have only one type of disability

<sup>7</sup> Probable Alzheimer's Cases = (65-74 Population x 0.0136) + (75-84 Population x 0.1822) + (85+ Population x 0.4098)

<sup>8</sup> Annual expenses include: housing, including utilities, taxes, insurance; food; transportation; health care, based on good health; and miscellaneous.

## Sources

- Population: Florida Population by County, Age, Race, Ethnicity and Gender provided by Florida Legislature, Office of Economic and Demographic Research
- Financial Status & Living Situation: Department of Elder Affairs calculations based on Florida Population data and 2007-2011 American Community Survey
- Medically Underserved Population (Data as of 7/18/2014): Florida Department of Health and U.S. Department of Health and Human Services
- Grandparents: Department of Elder Affairs calculations based on Florida Population data and 2007-2011 American Community Survey, Special Tabulation on Aging
- Skilled Nursing Facility Utilization, Adult Day Care, Adult Family Care Home, Ambulatory Surgical Centers, Assisted Living Facilities, Home Health Agencies, Homemakers & Companion Service Companies, Hospitals: Florida Agency for Health Care Administration
- Rural Designation: Based on the definition of Rural Designation by Rural Economic Development Initiative
- Medical Professionals: Florida Department of Health
- Driver's License: Florida Department of Highway Safety & Motor Vehicles
- Food Stamps: Florida Department of Children and Families
- Registered Voters (Data as of 1/31/2014) : Florida Department of State
- Households with Cost Burden Above 30% and income below 50% Area Median Income: The Shimberg Center for Housing Studies
- Median Household Incomes: U.S. Census Bureau: State and County QuickFacts
- Medicaid & Medicare Eligibility and Medicaid Eligibility: Florida Agency for Health Care Administration
- Veterans Demographics: Florida Department of Veterans' Affairs
- Disability Status: Department of Elder Affairs calculations based on Florida Population data and 2009-2011 American Community Survey Data
- Probable Alzheimer's Cases: Department of Elder Affairs calculations based on Florida Population data and Alzheimer's by Age in 2011 Alzheimer's Disease Facts and Figures report at [http://www.alz.org/documents\\_custom/Facts\\_2011/ALZ\\_FL.pdf?type=interior\\_map&facts=undefined&facts=facts](http://www.alz.org/documents_custom/Facts_2011/ALZ_FL.pdf?type=interior_map&facts=undefined&facts=facts)
- English Proficiency: Department of Elder Affairs calculations based on Florida Population data and 2007-2011 American Community Survey, Special Tabulation on Aging
- Cost of Living (Data as of 7/18/2014): Wider Opportunities for Women Elder Economic Security Standard™ Index (Elder Index) at <http://www.basiceconomicsecurity.org/EI/>