



2013 Florida County Profiles

Gilchrist

Population by Age Category		
All Ages	16,880	100.0%
Under 60	12,642	74.9%
60+	4,238	25.1%
65+	3,072	18.2%
70+	2,046	12.1%
75+	1,270	7.5%
80+	760	4.5%
85+	392	2.3%

Population by Race (60+)		
White	4,178	98.6%
Non-White	95	2.2%
Black	69	1.6%
Other Minorities	26	0.6%

Population by Ethnicity (60+)		
Total Hispanic	73	1.7%
White	68	1.6%
Non-White	5	0.1%
Total Non-Hispanic	4,165	98.3%
Total Minorities ¹	128	3.0%

Population by Gender (60+)		
Population 60+	4,238	25.1%
Male	1,968	46.4%
Female	2,270	53.6%

Financial Status (60+, % 60+)		
Below Poverty Guideline	626	14.8%
Below 125% of Poverty Guideline	767	18.1%
Minorities Below Poverty Guideline	29	0.7%
Minorities Below 125% of Poverty Guideline	31	0.7%

Medically Underserved (65+)		
Total Medically Underserved	1,135	
Medically Underserved Populations - Living in Areas Defined as Having Medically Underserved Populations	1,135	
Medically Underserved Areas - Living in Medically Underserved Areas	0	

Living Situation (60+)		
Living Alone	777	
Male	253	
Female	524	

Grandparents (60+)	
Total 60+ Living With Own Grandchildren (Under Age 18)	299
Grandparent Responsible for Own Grandchildren (Under Age 18)	4
Grandparent Not Responsible for Own Grandchildren (Under Age 18)	294
60+ Not Living With Own Grandchildren (Under Age 18)	3,748

Skilled Nursing Facility Utilization	
SNF Beds	201
Community Beds	201
Sheltered Beds	0
Veterans Administration Beds	0
Other Beds	0
SNFs With Beds	2
Community Beds	2
Sheltered Beds	0
Veterans Administration Beds	0
Other Beds	0
SNFs With Community Beds	2
Community Bed Days	73,365
Community Patient Days	69,772
Medicaid Patient Days	47,116
Occupancy Rate	95.1%
Percent Medicaid	67.5%

Adult Day Care	
Facilities	0
Capacity	0

Adult Family Care Homes	
Homes	0
Beds	0

Home Health Agencies	
Agencies	1
Medicaid Certified Agencies	0
Medicare Certified Agencies	1

Homemaker & Companion Service Companies	
Companies	0

Ambulatory Surgical Centers	
Facilities	0
Operating Rooms	0
Recovery Beds	0



2013 Florida County Profiles

Gilchrist (Continued)

Rural Designation	
Rural (Yes/No)	YES

Assisted Living Facilities	
Total Beds	0
OSS Beds ²	0
Non-OSS Beds	0
Total Facilities	0
Facilities With ECC License ³	0
Facilities With LMH License ⁴	0
Facilities With LNS License ⁵	0

Hospitals	
Hospitals	0
Hospitals With Skilled Nursing Units	0
Hospital Beds	0
Skilled Nursing Unit Beds	0

Medical Professionals	
Medical Doctors	
Licensed	5
Limited License	0
Critical Need Area License	0
Restricted	0
Medical Faculty Certificate	0
Public Health Certificate	0
Specialties	
Licensed Podiatric Physicians	0
Licensed Osteopathic Physicians	3
Licensed Chiropractic Physicians	2
Registered Nurses	
Licensed Registered Nurses	188

Driver's License	
Drivers With Florida Driver's License - All Ages	11,668
Drivers With Florida Driver's License - Age 60+	3,413
Percent of Drivers With Florida Driver's License - Age 60+	28.0%

Food Stamps (60+)	
Participants (60+)	278
Potentially Eligible	767
Food Stamp Participation Rate (60+)	36.2%

Registered Voters	
Registered to Vote in Florida - All Ages	10,964
Registered to Vote in Florida - Age 60+	3,565
Percent of Population Registered to Vote in Florida - Age 60+	32.5%

Households With Cost Burden Above 30% and Income Below 50% Area Median Income (65+) (2010)	
Elder Households	2,108
Percent of All Households	15.2%

Median Household Income (All Ages)	
2008-2012	\$36,521

Medicaid & Medicare Eligibility	
Medicaid Eligible - All Ages	3,499
Medicaid Eligible - 60+	563
Dual Eligible - All Ages	741
Dual Eligible - 60+	512

Veterans	
Total	1,335
Age 45-64	593
Age 65-84	662
Age 85+	80

Disability Status (60+)	
With One Type of Disability ⁶	0
Hearing	0
Vision	0
Cognitive	0
Ambulatory	0
Self-Care	0
Independent Living	0
With Two or More Disabilities	0
With No Disabilities	0
Probable Alzheimer's Cases ⁷	345

English Proficiency (60+)	
With Limited English Proficiency	22

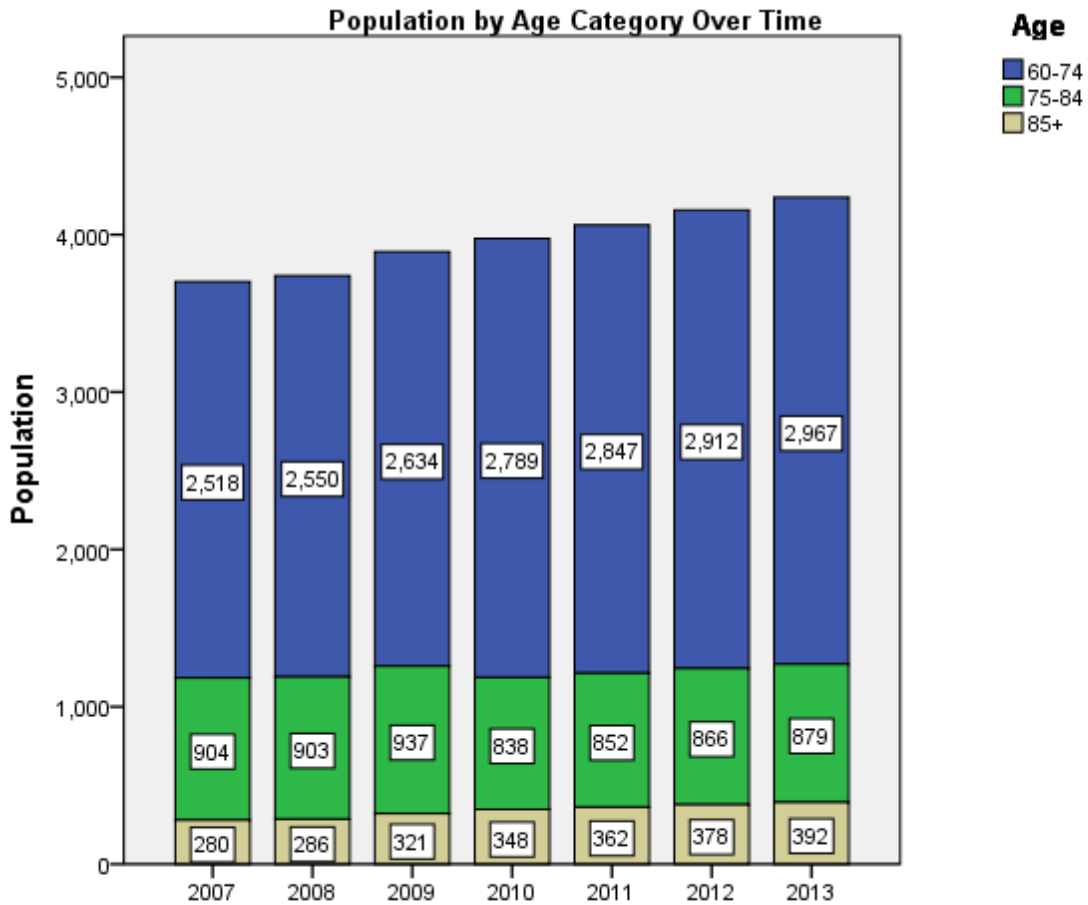
2013 Florida County Profiles

Gilchrist (Continued)

Cost of Living	
	Annual Expenses ⁸
Single Elders	
Owner without Mortgage	\$19,272
Renter, one bedroom	\$24,456
Owner with Mortgage	\$27,828
Elder Couple	
Owner without Mortgage	\$31,740
Renter, one bedroom	\$36,924
Owner with Mortgage	\$40,296

Note: Wider Opportunities for Women Elder Economic Security Standard™ Index (Elder Index) measures how much income retired older adults require to meet their basic needs—without public or private assistance. The Elder Index measures basic expenses for elders age 65+ living in the community, not in institutions.

Useful Websites
County Chronic Disease Profile (Gilchrist)
Florida Housing Data Clearinghouse (Gilchrist)
Behavioral Risk Factors (BRFSS) (Gilchrist)





2013 Florida County Profiles

¹ Total Minorities = (60+ Population) – (White Non-Hispanic 60+)

² OSS beds: Optional State Supplementation beds

³ ECC License: Extended Congregate Care License

⁴ LMH License: Limited Mental Health License

⁵ LNS License: Limited Nursing Services License

⁶ With One Type of Disability: 60+ people who have only one type of disability

⁷ Probable Alzheimer's Cases = (65-74 Population x 0.0136) + (75-84 Population x 0.1822) + (85+ Population x 0.4098)

⁸ Annual expenses include: housing, including utilities, taxes, insurance; food; transportation; health care, based on good health; and miscellaneous.

Sources

- Population: Florida Population by County, Age, Race, Ethnicity and Gender provided by Florida Legislature, Office of Economic and Demographic Research
- Financial Status & Living Situation: Department of Elder Affairs calculations based on Florida Population data and 2007-2011 American Community Survey
- Medically Underserved Population (Data as of 7/18/2014): Florida Department of Health and U.S. Department of Health and Human Services
- Grandparents: Department of Elder Affairs calculations based on Florida Population data and 2007-2011 American Community Survey, Special Tabulation on Aging
- Skilled Nursing Facility Utilization, Adult Day Care, Adult Family Care Home, Ambulatory Surgical Centers, Assisted Living Facilities, Home Health Agencies, Homemakers & Companion Service Companies, Hospitals: Florida Agency for Health Care Administration
- Rural Designation: Based on the definition of Rural Designation by Rural Economic Development Initiative
- Medical Professionals: Florida Department of Health
- Driver's License: Florida Department of Highway Safety & Motor Vehicles
- Food Stamps: Florida Department of Children and Families
- Registered Voters (Data as of 1/31/2014) : Florida Department of State
- Households with Cost Burden Above 30% and income below 50% Area Median Income: The Shimberg Center for Housing Studies
- Median Household Incomes: U.S. Census Bureau: State and County QuickFacts
- Medicaid & Medicare Eligibility and Medicaid Eligibility: Florida Agency for Health Care Administration
- Veterans Demographics: Florida Department of Veterans' Affairs
- Disability Status: Department of Elder Affairs calculations based on Florida Population data and 2009-2011 American Community Survey Data
- Probable Alzheimer's Cases: Department of Elder Affairs calculations based on Florida Population data and Alzheimer's by Age in 2011 Alzheimer's Disease Facts and Figures report at http://www.alz.org/documents_custom/Facts_2011/ALZ_FL.pdf?type=interior_map&facts=undefined&facts=facts
- English Proficiency: Department of Elder Affairs calculations based on Florida Population data and 2007-2011 American Community Survey, Special Tabulation on Aging
- Cost of Living (Data as of 7/18/2014): Wider Opportunities for Women Elder Economic Security Standard™ Index (Elder Index) at <http://www.basiceconomicsecurity.org/EI/>