



# 2013 Florida County Profiles

## Gadsden

Population by Age Category		
All Ages	47,588	100.0%
Under 60	37,662	79.1%
60+	9,926	20.9%
65+	6,814	14.3%
70+	4,468	9.4%
75+	2,752	5.8%
80+	1,564	3.3%
85+	736	1.5%

Population by Race (60+)		
White	5,382	54.2%
Non-White	4,401	44.3%
Black	4,315	43.5%
Other Minorities	86	0.9%

Population by Ethnicity (60+)		
Total Hispanic	198	2.0%
White	178	1.8%
Non-White	20	0.2%
Total Non-Hispanic	9,728	98.0%
Total Minorities <sup>1</sup>	4,722	47.6%

Population by Gender (60+)		
Population 60+	9,926	20.9%
Male	4,524	45.6%
Female	5,402	54.4%

Financial Status (60+, % 60+)		
Below Poverty Guideline	1,627	16.4%
Below 125% of Poverty Guideline	2,375	23.9%
Minorities Below Poverty Guideline	1,165	11.7%
Minorities Below 125% of Poverty Guideline	1,666	16.8%

Medically Underserved (65+)		
Total Medically Underserved	6,183	
Medically Underserved Populations - Living in Areas Defined as Having Medically Underserved Populations	0	
Medically Underserved Areas - Living in Medically Underserved Areas	6,183	

Living Situation (60+)	
Living Alone	2,400
Male	611
Female	1,789

Grandparents (60+)	
Total 60+ Living With Own Grandchildren (Under Age 18)	748
Grandparent Responsible for Own Grandchildren (Under Age 18)	238
Grandparent Not Responsible for Own Grandchildren (Under Age 18)	510
60+ Not Living With Own Grandchildren (Under Age 18)	8,795

Skilled Nursing Facility Utilization	
SNF Beds	120
Community Beds	120
Sheltered Beds	0
Veterans Administration Beds	0
Other Beds	0
SNFs With Beds	1
Community Beds	1
Sheltered Beds	0
Veterans Administration Beds	0
Other Beds	0
SNFs With Community Beds	1
Community Bed Days	43,800
Community Patient Days	41,188
Medicaid Patient Days	33,683
Occupancy Rate	94.0%
Percent Medicaid	81.8%

Adult Day Care	
Facilities	1
Capacity	50

Adult Family Care Homes	
Homes	1
Beds	5

Home Health Agencies	
Agencies	1
Medicaid Certified Agencies	0
Medicare Certified Agencies	1

Homemaker & Companion Service Companies	
Companies	12

Ambulatory Surgical Centers	
Facilities	0
Operating Rooms	0
Recovery Beds	0



# 2013 Florida County Profiles

## Gadsden (Continued)

Rural Designation	
Rural (Yes/No)	YES

Assisted Living Facilities	
Total Beds	68
OSS Beds <sup>2</sup>	24
Non-OSS Beds	44
Total Facilities	2
Facilities With ECC License <sup>3</sup>	0
Facilities With LMH License <sup>4</sup>	1
Facilities With LNS License <sup>5</sup>	1

Hospitals	
Hospitals	2
Hospitals With Skilled Nursing Units	0
Hospital Beds	4
Skilled Nursing Unit Beds	0

Medical Professionals	
Medical Doctors	
Licensed	18
Limited License	0
Critical Need Area License	1
Restricted	0
Medical Faculty Certificate	0
Public Health Certificate	0
Specialties	
Licensed Podiatric Physicians	0
Licensed Osteopathic Physicians	2
Licensed Chiropractic Physicians	3
Registered Nurses	
Licensed Registered Nurses	294

Driver's License	
Drivers With Florida Driver's License - All Ages	30,600
Drivers With Florida Driver's License - Age 60+	8,560
Percent of Drivers With Florida Driver's License - Age 60+	38.2%

Food Stamps (60+)	
Participants (60+)	970
Potentially Eligible	2,375
Food Stamp Participation Rate (60+)	40.8%

Registered Voters	
Registered to Vote in Florida - All Ages	28,922
Registered to Vote in Florida - Age 60+	8,802
Percent of Population Registered to Vote in Florida - Age 60+	30.4%

Households With Cost Burden Above 30% and Income Below 50% Area Median Income (65+) (2010)	
Elder Households	4,081
Percent of All Households	18.3%

Median Household Income (All Ages)	
2008-2012	\$35,593

Medicaid & Medicare Eligibility	
Medicaid Eligible - All Ages	12,210
Medicaid Eligible - 60+	1,588
Dual Eligible - All Ages	2,313
Dual Eligible - 60+	1,409

Veterans	
Total	3,141
Age 45-64	1,658
Age 65-84	1,275
Age 85+	208

Disability Status (60+)	
With One Type of Disability <sup>6</sup>	1,585
Hearing	1,075
Vision	610
Cognitive	582
Ambulatory	2,305
Self-Care	682
Independent Living	1,347
With Two or More Disabilities	1,735
With No Disabilities	6,451
Probable Alzheimer's Cases <sup>7</sup>	724

English Proficiency (60+)	
With Limited English Proficiency	155

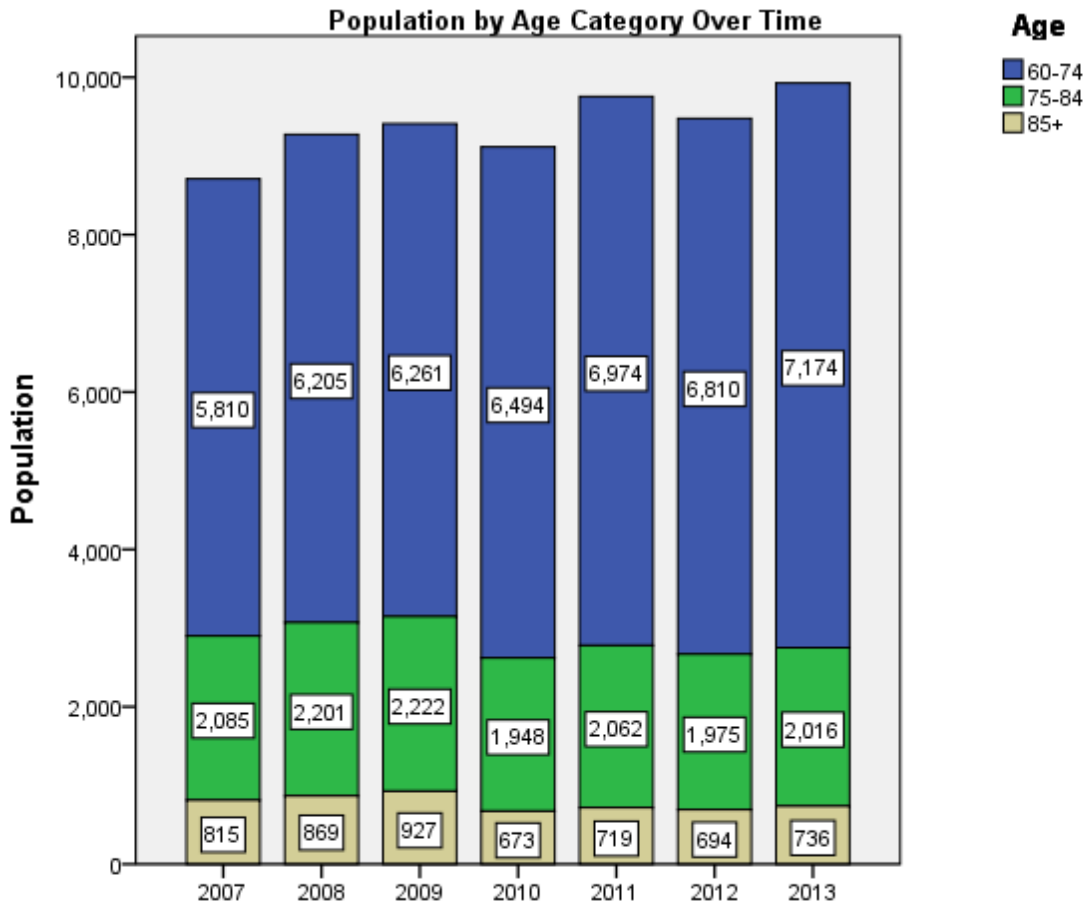
# 2013 Florida County Profiles

## Gadsden (Continued)

Cost of Living	
	Annual Expenses <sup>8</sup>
<b>Single Elders</b>	
Owner without Mortgage	\$18,264
Renter, one bedroom	\$22,908
Owner with Mortgage	\$26,964
<b>Elder Couple</b>	
Owner without Mortgage	\$28,584
Renter, one bedroom	\$33,228
Owner with Mortgage	\$37,284

Note: Wider Opportunities for Women Elder Economic Security Standard™ Index (Elder Index) measures how much income retired older adults require to meet their basic needs—without public or private assistance. The Elder Index measures basic expenses for elders age 65+ living in the community, not in institutions.

Useful Websites
<a href="#">County Chronic Disease Profile (Gadsden)</a>
<a href="#">Florida Housing Data Clearinghouse (Gadsden)</a>
<a href="#">Behavioral Risk Factors (BRFSS) (Gadsden)</a>





# 2013 Florida County Profiles

---

<sup>1</sup> Total Minorities = (60+ Population) – (White Non-Hispanic 60+)

<sup>2</sup> OSS beds: Optional State Supplementation beds

<sup>3</sup> ECC License: Extended Congregate Care License

<sup>4</sup> LMH License: Limited Mental Health License

<sup>5</sup> LNS License: Limited Nursing Services License

<sup>6</sup> With One Type of Disability: 60+ people who have only one type of disability

<sup>7</sup> Probable Alzheimer's Cases = (65-74 Population x 0.0136) + (75-84 Population x 0.1822) + (85+ Population x 0.4098)

<sup>8</sup> Annual expenses include: housing, including utilities, taxes, insurance; food; transportation; health care, based on good health; and miscellaneous.

## Sources

- Population: Florida Population by County, Age, Race, Ethnicity and Gender provided by Florida Legislature, Office of Economic and Demographic Research
- Financial Status & Living Situation: Department of Elder Affairs calculations based on Florida Population data and 2007-2011 American Community Survey
- Medically Underserved Population (Data as of 7/18/2014): Florida Department of Health and U.S. Department of Health and Human Services
- Grandparents: Department of Elder Affairs calculations based on Florida Population data and 2007-2011 American Community Survey, Special Tabulation on Aging
- Skilled Nursing Facility Utilization, Adult Day Care, Adult Family Care Home, Ambulatory Surgical Centers, Assisted Living Facilities, Home Health Agencies, Homemakers & Companion Service Companies, Hospitals: Florida Agency for Health Care Administration
- Rural Designation: Based on the definition of Rural Designation by Rural Economic Development Initiative
- Medical Professionals: Florida Department of Health
- Driver's License: Florida Department of Highway Safety & Motor Vehicles
- Food Stamps: Florida Department of Children and Families
- Registered Voters (Data as of 1/31/2014) : Florida Department of State
- Households with Cost Burden Above 30% and income below 50% Area Median Income: The Shimberg Center for Housing Studies
- Median Household Incomes: U.S. Census Bureau: State and County QuickFacts
- Medicaid & Medicare Eligibility and Medicaid Eligibility: Florida Agency for Health Care Administration
- Veterans Demographics: Florida Department of Veterans' Affairs
- Disability Status: Department of Elder Affairs calculations based on Florida Population data and 2009-2011 American Community Survey Data
- Probable Alzheimer's Cases: Department of Elder Affairs calculations based on Florida Population data and Alzheimer's by Age in 2011 Alzheimer's Disease Facts and Figures report at [http://www.alz.org/documents\\_custom/Facts\\_2011/ALZ\\_FL.pdf?type=interior\\_map&facts=undefined&facts=facts](http://www.alz.org/documents_custom/Facts_2011/ALZ_FL.pdf?type=interior_map&facts=undefined&facts=facts)
- English Proficiency: Department of Elder Affairs calculations based on Florida Population data and 2007-2011 American Community Survey, Special Tabulation on Aging
- Cost of Living (Data as of 7/18/2014): Wider Opportunities for Women Elder Economic Security Standard™ Index (Elder Index) at <http://www.basiceconomicsecurity.org/EI/>