



2013 Florida County Profiles

Escambia

Population by Age Category		
All Ages	301,120	100.0%
Under 60	236,519	78.5%
60+	64,601	21.5%
65+	46,481	15.4%
70+	31,654	10.5%
75+	20,498	6.8%
80+	12,262	4.1%
85+	5,852	1.9%

Population by Race (60+)		
White	51,465	79.7%
Non-White	12,815	19.8%
Black	10,668	16.5%
Other Minorities	2,147	3.3%

Population by Ethnicity (60+)		
Total Hispanic	1,168	1.8%
White	973	1.5%
Non-White	195	0.3%
Total Non-Hispanic	63,433	98.2%
Total Minorities ¹	14,109	21.8%

Population by Gender (60+)		
Population 60+	64,601	21.5%
Male	28,989	44.9%
Female	35,612	55.1%

Financial Status (60+, % 60+)		
Below Poverty Guideline	6,563	10.2%
Below 125% of Poverty Guideline	9,476	14.7%
Minorities Below Poverty Guideline	2,929	4.5%
Minorities Below 125% of Poverty Guideline	4,037	6.2%

Medically Underserved (65+)	
Total Medically Underserved	18,247
Medically Underserved Populations - Living in Areas Defined as Having Medically Underserved Populations	16,214
Medically Underserved Areas - Living in Medically Underserved Areas	2,033

Living Situation (60+)	
Living Alone	16,294
Male	5,063
Female	11,231

Grandparents (60+)	
Total 60+ Living With Own Grandchildren (Under Age 18)	3,591
Grandparent Responsible for Own Grandchildren (Under Age 18)	1,473
Grandparent Not Responsible for Own Grandchildren (Under Age 18)	2,118
60+ Not Living With Own Grandchildren (Under Age 18)	59,316

Skilled Nursing Facility Utilization	
SNF Beds	1,723
Community Beds	1,688
Sheltered Beds	35
Veterans Administration Beds	0
Other Beds	0
SNFs With Beds	14
Community Beds	13
Sheltered Beds	1
Veterans Administration Beds	0
Other Beds	0
SNFs With Community Beds	13
Community Bed Days	616,120
Community Patient Days	565,118
Medicaid Patient Days	352,333
Occupancy Rate	91.7%
Percent Medicaid	62.3%

Adult Day Care	
Facilities	2
Capacity	77

Adult Family Care Homes	
Homes	4
Beds	18

Home Health Agencies	
Agencies	24
Medicaid Certified Agencies	9
Medicare Certified Agencies	14

Homemaker & Companion Service Companies	
Companies	30

Ambulatory Surgical Centers	
Facilities	9
Operating Rooms	26
Recovery Beds	73



2013 Florida County Profiles

Escambia (Continued)

Rural Designation	
Rural (Yes/No)	NO

Assisted Living Facilities	
Total Beds	882
OSS Beds ²	365
Non-OSS Beds	517
Total Facilities	17
Facilities With ECC License ³	2
Facilities With LMH License ⁴	7
Facilities With LNS License ⁵	9

Hospitals	
Hospitals	4
Hospitals With Skilled Nursing Units	0
Hospital Beds	1,527
Skilled Nursing Unit Beds	0

Medical Professionals	
Medical Doctors	
Licensed	809
Limited License	2
Critical Need Area License	1
Restricted	0
Medical Faculty Certificate	0
Public Health Certificate	0
Specialties	
Licensed Podiatric Physicians	13
Licensed Osteopathic Physicians	71
Licensed Chiropractic Physicians	47
Registered Nurses	
Licensed Registered Nurses	3,944

Driver's License	
Drivers With Florida Driver's License - All Ages	227,295
Drivers With Florida Driver's License - Age 60+	62,844
Percent of Drivers With Florida Driver's License - Age 60+	21.5%

Food Stamps (60+)	
Participants (60+)	3,929
Potentially Eligible	9,476
Food Stamp Participation Rate (60+)	41.5%

Registered Voters	
Registered to Vote in Florida - All Ages	195,625
Registered to Vote in Florida - Age 60+	58,003
Percent of Population Registered to Vote in Florida - Age 60+	29.7%

Households With Cost Burden Above 30% and Income Below 50% Area Median Income (65+) (2010)	
Elder Households	31,807
Percent of All Households	15.9%

Median Household Income (All Ages)	
2008-2012	\$43,806

Medicaid & Medicare Eligibility	
Medicaid Eligible - All Ages	61,473
Medicaid Eligible - 60+	7,244
Dual Eligible - All Ages	11,414
Dual Eligible - 60+	6,393

Veterans	
Total	27,719
Age 45-64	14,640
Age 65-84	11,137
Age 85+	1,942

Disability Status (60+)	
With One Type of Disability ⁶	10,709
Hearing	8,553
Vision	4,177
Cognitive	5,376
Ambulatory	15,859
Self-Care	5,053
Independent Living	9,553
With Two or More Disabilities	12,552
With No Disabilities	41,114
Probable Alzheimer's Cases ⁷	5,421

English Proficiency (60+)	
With Limited English Proficiency	957

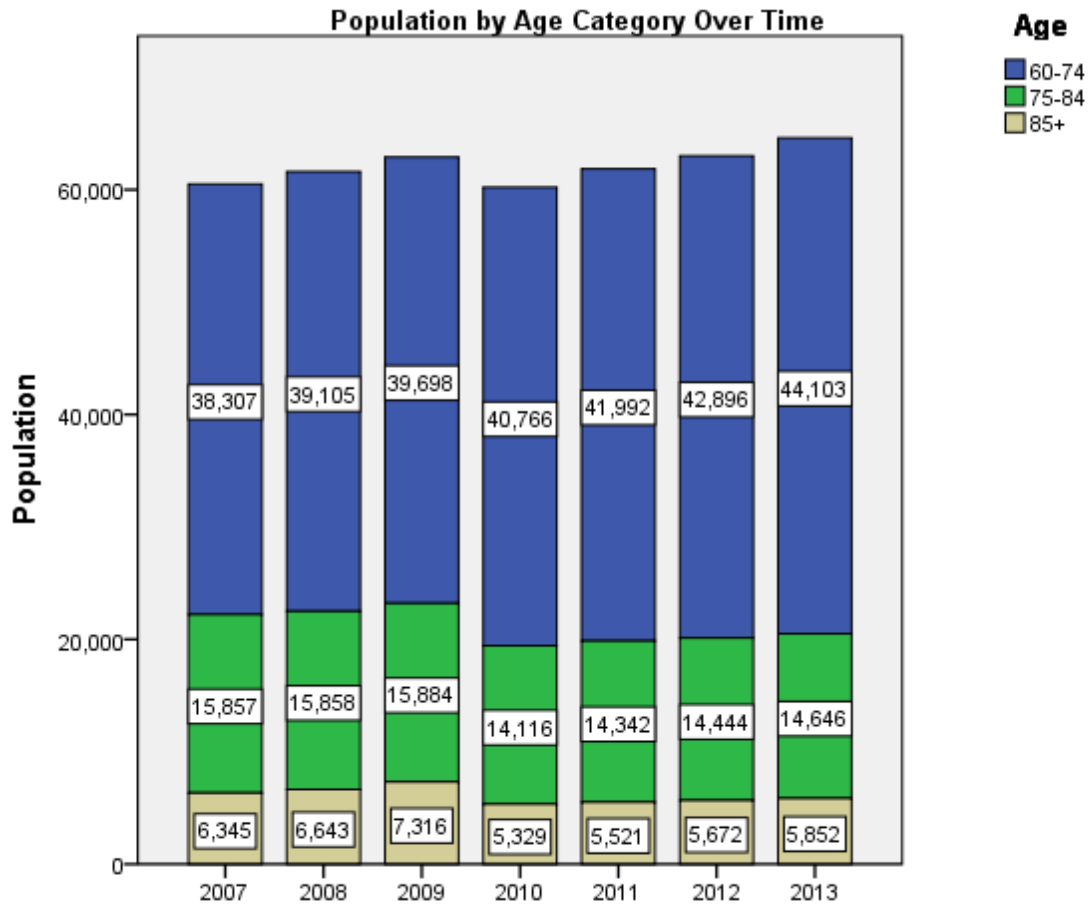
2013 Florida County Profiles

Escambia (Continued)

Cost of Living	
	Annual Expenses ⁸
Single Elders	
Owner without Mortgage	\$20,148
Renter, one bedroom	\$24,456
Owner with Mortgage	\$29,004
Elder Couple	
Owner without Mortgage	\$32,616
Renter, one bedroom	\$36,924
Owner with Mortgage	\$41,472

Note: Wider Opportunities for Women Elder Economic Security Standard™ Index (Elder Index) measures how much income retired older adults require to meet their basic needs—without public or private assistance. The Elder Index measures basic expenses for elders age 65+ living in the community, not in institutions.

Useful Websites
County Chronic Disease Profile (Escambia)
Florida Housing Data Clearinghouse (Escambia)
Behavioral Risk Factors (BRFSS) (Escambia)





2013 Florida County Profiles

¹ Total Minorities = (60+ Population) – (White Non-Hispanic 60+)

² OSS beds: Optional State Supplementation beds

³ ECC License: Extended Congregate Care License

⁴ LMH License: Limited Mental Health License

⁵ LNS License: Limited Nursing Services License

⁶ With One Type of Disability: 60+ people who have only one type of disability

⁷ Probable Alzheimer's Cases = (65-74 Population x 0.0136) + (75-84 Population x 0.1822) + (85+ Population x 0.4098)

⁸ Annual expenses include: housing, including utilities, taxes, insurance; food; transportation; health care, based on good health; and miscellaneous.

Sources

- Population: Florida Population by County, Age, Race, Ethnicity and Gender provided by Florida Legislature, Office of Economic and Demographic Research
- Financial Status & Living Situation: Department of Elder Affairs calculations based on Florida Population data and 2007-2011 American Community Survey
- Medically Underserved Population (Data as of 7/18/2014): Florida Department of Health and U.S. Department of Health and Human Services
- Grandparents: Department of Elder Affairs calculations based on Florida Population data and 2007-2011 American Community Survey, Special Tabulation on Aging
- Skilled Nursing Facility Utilization, Adult Day Care, Adult Family Care Home, Ambulatory Surgical Centers, Assisted Living Facilities, Home Health Agencies, Homemakers & Companion Service Companies, Hospitals: Florida Agency for Health Care Administration
- Rural Designation: Based on the definition of Rural Designation by Rural Economic Development Initiative
- Medical Professionals: Florida Department of Health
- Driver's License: Florida Department of Highway Safety & Motor Vehicles
- Food Stamps: Florida Department of Children and Families
- Registered Voters (Data as of 1/31/2014) : Florida Department of State
- Households with Cost Burden Above 30% and income below 50% Area Median Income: The Shimberg Center for Housing Studies
- Median Household Incomes: U.S. Census Bureau: State and County QuickFacts
- Medicaid & Medicare Eligibility and Medicaid Eligibility: Florida Agency for Health Care Administration
- Veterans Demographics: Florida Department of Veterans' Affairs
- Disability Status: Department of Elder Affairs calculations based on Florida Population data and 2009-2011 American Community Survey Data
- Probable Alzheimer's Cases: Department of Elder Affairs calculations based on Florida Population data and Alzheimer's by Age in 2011 Alzheimer's Disease Facts and Figures report at http://www.alz.org/documents_custom/Facts_2011/ALZ_FL.pdf?type=interior_map&facts=undefined&facts=facts
- English Proficiency: Department of Elder Affairs calculations based on Florida Population data and 2007-2011 American Community Survey, Special Tabulation on Aging
- Cost of Living (Data as of 7/18/2014): Wider Opportunities for Women Elder Economic Security Standard™ Index (Elder Index) at <http://www.basiceconomicsecurity.org/EI/>