



# 2013 Florida County Profiles

## Collier

Population by Age Category		
All Ages	333,663	100.0%
Under 60	220,216	66.0%
60+	113,447	34.0%
65+	90,174	27.0%
70+	65,291	19.6%
75+	42,138	12.6%
80+	24,437	7.3%
85+	10,950	3.3%

Population by Race (60+)		
White	110,181	97.1%
Non-White	3,958	3.5%
Black	2,922	2.6%
Other Minorities	1,036	0.9%

Population by Ethnicity (60+)		
Total Hispanic	7,745	6.8%
White	7,416	6.5%
Non-White	329	0.3%
Total Non-Hispanic	105,702	93.2%
Total Minorities <sup>1</sup>	10,682	9.4%

Population by Gender (60+)		
Population 60+	113,447	34.0%
Male	52,340	46.1%
Female	61,107	53.9%

Financial Status (60+, % 60+)		
Below Poverty Guideline	7,926	7.0%
Below 125% of Poverty Guideline	10,905	9.6%
Minorities Below Poverty Guideline	2,044	1.8%
Minorities Below 125% of Poverty Guideline	2,816	2.5%

Medically Underserved (65+)	
Total Medically Underserved	23,317
Medically Underserved Populations - Living in Areas Defined as Having Medically Underserved Populations	23,317
Medically Underserved Areas - Living in Medically Underserved Areas	0

Living Situation (60+)	
Living Alone	21,256
Male	6,346
Female	14,910

Grandparents (60+)	
Total 60+ Living With Own Grandchildren (Under Age 18)	3,567
Grandparent Responsible for Own Grandchildren (Under Age 18)	733
Grandparent Not Responsible for Own Grandchildren (Under Age 18)	2,840
60+ Not Living With Own Grandchildren (Under Age 18)	108,875

Skilled Nursing Facility Utilization	
SNF Beds	908
Community Beds	755
Sheltered Beds	153
Veterans Administration Beds	0
Other Beds	0
SNFs With Beds	13
Community Beds	10
Sheltered Beds	3
Veterans Administration Beds	0
Other Beds	0
SNFs With Community Beds	10
Community Bed Days	275,575
Community Patient Days	245,142
Medicaid Patient Days	116,713
Occupancy Rate	89.0%
Percent Medicaid	47.6%

Adult Day Care	
Facilities	1
Capacity	41

Adult Family Care Homes	
Homes	4
Beds	17

Home Health Agencies	
Agencies	34
Medicaid Certified Agencies	2
Medicare Certified Agencies	10

Homemaker & Companion Service Companies	
Companies	24

Ambulatory Surgical Centers	
Facilities	14
Operating Rooms	32
Recovery Beds	74



# 2013 Florida County Profiles

## Collier (Continued)

Rural Designation	
Rural (Yes/No)	NO

Assisted Living Facilities	
Total Beds	1,334
OSS Beds <sup>2</sup>	6
Non-OSS Beds	1,328
Total Facilities	19
Facilities With ECC License <sup>3</sup>	8
Facilities With LMH License <sup>4</sup>	1
Facilities With LNS License <sup>5</sup>	8

Hospitals	
Hospitals	5
Hospitals With Skilled Nursing Units	0
Hospital Beds	980
Skilled Nursing Unit Beds	0

Medical Professionals	
Medical Doctors	
Licensed	831
Limited License	21
Critical Need Area License	8
Restricted	0
Medical Faculty Certificate	0
Public Health Certificate	0
Specialties	
Licensed Podiatric Physicians	31
Licensed Osteopathic Physicians	82
Licensed Chiropractic Physicians	103
Registered Nurses	
Licensed Registered Nurses	3,350

Driver's License	
Drivers With Florida Driver's License - All Ages	262,597
Drivers With Florida Driver's License - Age 60+	104,344
Percent of Drivers With Florida Driver's License - Age 60+	39.7%

Food Stamps (60+)	
Participants (60+)	3,667
Potentially Eligible	10,905
Food Stamp Participation Rate (60+)	33.6%

Registered Voters	
Registered to Vote in Florida - All Ages	178,913
Registered to Vote in Florida - Age 60+	90,101
Percent of Population Registered to Vote in Florida - Age 60+	50.4%

Households With Cost Burden Above 30% and Income Below 50% Area Median Income (65+) (2010)	
Elder Households	49,733
Percent of All Households	10.6%

Median Household Income (All Ages)	
2008-2012	\$56,104

Medicaid & Medicare Eligibility	
Medicaid Eligible - All Ages	42,841
Medicaid Eligible - 60+	5,391
Dual Eligible - All Ages	6,138
Dual Eligible - 60+	4,611

Veterans	
Total	25,135
Age 45-64	6,722
Age 65-84	15,182
Age 85+	3,231

Disability Status (60+)	
With One Type of Disability <sup>6</sup>	12,914
Hearing	11,631
Vision	4,294
Cognitive	6,150
Ambulatory	15,497
Self-Care	4,187
Independent Living	9,898
With Two or More Disabilities	12,871
With No Disabilities	89,287
Probable Alzheimer's Cases <sup>7</sup>	10,826

English Proficiency (60+)	
With Limited English Proficiency	5,984

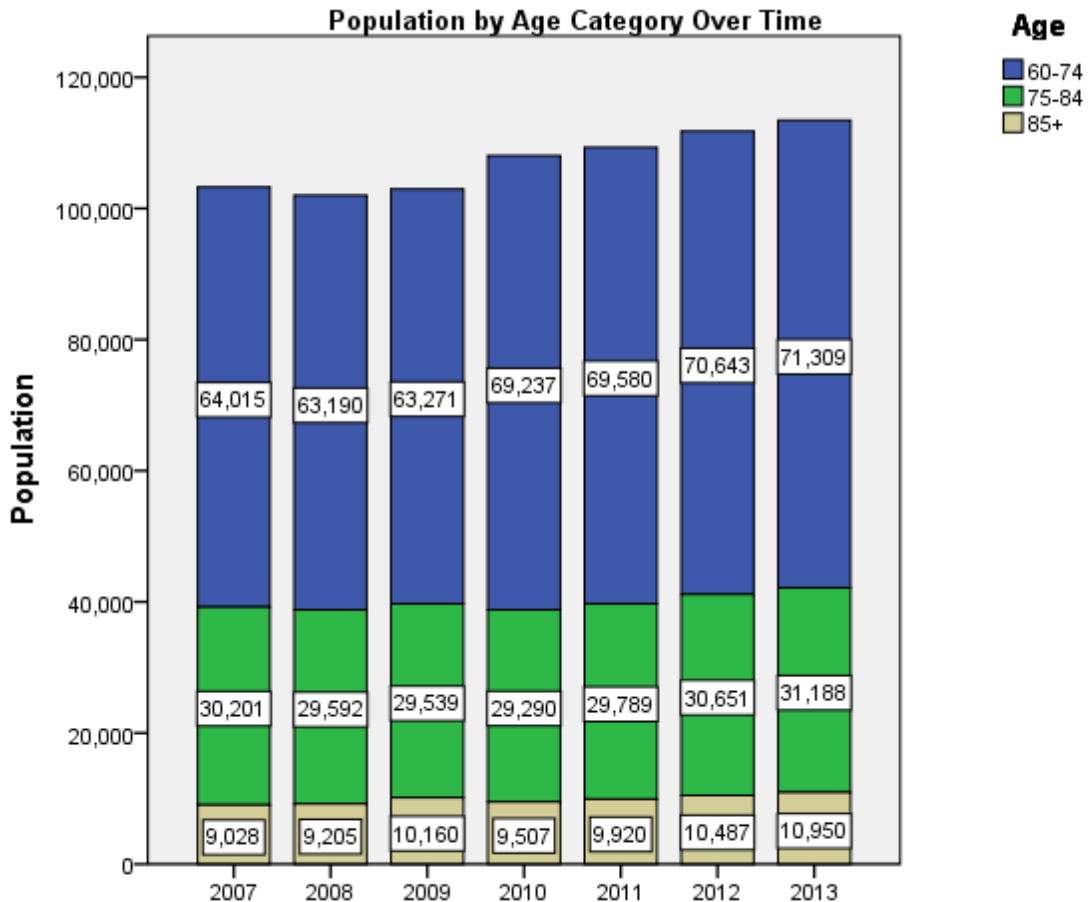
# 2013 Florida County Profiles

## Collier (Continued)

Cost of Living	
	Annual Expenses <sup>8</sup>
<b>Single Elders</b>	
Owner without Mortgage	\$25,104
Renter, one bedroom	\$29,364
Owner with Mortgage	\$37,920
<b>Elder Couple</b>	
Owner without Mortgage	\$37,572
Renter, one bedroom	\$41,832
Owner with Mortgage	\$50,388

Note: Wider Opportunities for Women Elder Economic Security Standard™ Index (Elder Index) measures how much income retired older adults require to meet their basic needs—without public or private assistance. The Elder Index measures basic expenses for elders age 65+ living in the community, not in institutions.

Useful Websites
<a href="#">County Chronic Disease Profile (Collier)</a>
<a href="#">Florida Housing Data Clearinghouse (Collier)</a>
<a href="#">Behavioral Risk Factors (BRFSS) (Collier)</a>





# 2013 Florida County Profiles

---

<sup>1</sup> Total Minorities = (60+ Population) – (White Non-Hispanic 60+)

<sup>2</sup> OSS beds: Optional State Supplementation beds

<sup>3</sup> ECC License: Extended Congregate Care License

<sup>4</sup> LMH License: Limited Mental Health License

<sup>5</sup> LNS License: Limited Nursing Services License

<sup>6</sup> With One Type of Disability: 60+ people who have only one type of disability

<sup>7</sup> Probable Alzheimer's Cases = (65-74 Population x 0.0136) + (75-84 Population x 0.1822) + (85+ Population x 0.4098)

<sup>8</sup> Annual expenses include: housing, including utilities, taxes, insurance; food; transportation; health care, based on good health; and miscellaneous.

## Sources

- Population: Florida Population by County, Age, Race, Ethnicity and Gender provided by Florida Legislature, Office of Economic and Demographic Research
- Financial Status & Living Situation: Department of Elder Affairs calculations based on Florida Population data and 2007-2011 American Community Survey
- Medically Underserved Population (Data as of 7/18/2014): Florida Department of Health and U.S. Department of Health and Human Services
- Grandparents: Department of Elder Affairs calculations based on Florida Population data and 2007-2011 American Community Survey, Special Tabulation on Aging
- Skilled Nursing Facility Utilization, Adult Day Care, Adult Family Care Home, Ambulatory Surgical Centers, Assisted Living Facilities, Home Health Agencies, Homemakers & Companion Service Companies, Hospitals: Florida Agency for Health Care Administration
- Rural Designation: Based on the definition of Rural Designation by Rural Economic Development Initiative
- Medical Professionals: Florida Department of Health
- Driver's License: Florida Department of Highway Safety & Motor Vehicles
- Food Stamps: Florida Department of Children and Families
- Registered Voters (Data as of 1/31/2014) : Florida Department of State
- Households with Cost Burden Above 30% and income below 50% Area Median Income: The Shimberg Center for Housing Studies
- Median Household Incomes: U.S. Census Bureau: State and County QuickFacts
- Medicaid & Medicare Eligibility and Medicaid Eligibility: Florida Agency for Health Care Administration
- Veterans Demographics: Florida Department of Veterans' Affairs
- Disability Status: Department of Elder Affairs calculations based on Florida Population data and 2009-2011 American Community Survey Data
- Probable Alzheimer's Cases: Department of Elder Affairs calculations based on Florida Population data and Alzheimer's by Age in 2011 Alzheimer's Disease Facts and Figures report at [http://www.alz.org/documents\\_custom/Facts\\_2011/ALZ\\_FL.pdf?type=interior\\_map&facts=undefined&facts=facts](http://www.alz.org/documents_custom/Facts_2011/ALZ_FL.pdf?type=interior_map&facts=undefined&facts=facts)
- English Proficiency: Department of Elder Affairs calculations based on Florida Population data and 2007-2011 American Community Survey, Special Tabulation on Aging
- Cost of Living (Data as of 7/18/2014): Wider Opportunities for Women Elder Economic Security Standard™ Index (Elder Index) at <http://www.basiceconomicsecurity.org/EI/>