



2013 Florida County Profiles

Citrus

Population by Age Category		
All Ages	140,519	100.0%
Under 60	82,377	58.6%
60+	58,142	41.4%
65+	45,762	32.6%
70+	32,723	23.3%
75+	21,140	15.0%
80+	12,380	8.8%
85+	5,781	4.1%

Population by Race (60+)		
White	56,685	97.5%
Non-White	1,876	3.2%
Black	1,031	1.8%
Other Minorities	845	1.5%

Population by Ethnicity (60+)		
Total Hispanic	1,471	2.5%
White	1,360	2.3%
Non-White	111	0.2%
Total Non-Hispanic	56,671	97.5%
Total Minorities ¹	2,817	4.8%

Population by Gender (60+)		
Population 60+	58,142	41.4%
Male	27,004	46.4%
Female	31,138	53.6%

Financial Status (60+, % 60+)		
Below Poverty Guideline	5,033	8.7%
Below 125% of Poverty Guideline	8,497	14.6%
Minorities Below Poverty Guideline	271	0.5%
Minorities Below 125% of Poverty Guideline	425	0.7%

Medically Underserved (65+)	
Total Medically Underserved	18,008
Medically Underserved Populations - Living in Areas Defined as Having Medically Underserved Populations	18,008
Medically Underserved Areas - Living in Medically Underserved Areas	0

Living Situation (60+)	
Living Alone	11,387
Male	3,625
Female	7,762

Grandparents (60+)	
Total 60+ Living With Own Grandchildren (Under Age 18)	1,507
Grandparent Responsible for Own Grandchildren (Under Age 18)	507
Grandparent Not Responsible for Own Grandchildren (Under Age 18)	1,000
60+ Not Living With Own Grandchildren (Under Age 18)	55,530

Skilled Nursing Facility Utilization	
SNF Beds	1,081
Community Beds	1,081
Sheltered Beds	0
Veterans Administration Beds	0
Other Beds	0
SNFs With Beds	9
Community Beds	9
Sheltered Beds	0
Veterans Administration Beds	0
Other Beds	0
SNFs With Community Beds	9
Community Bed Days	394,565
Community Patient Days	345,458
Medicaid Patient Days	209,083
Occupancy Rate	87.6%
Percent Medicaid	60.5%

Adult Day Care	
Facilities	2
Capacity	1,157

Adult Family Care Homes	
Homes	1
Beds	5

Home Health Agencies	
Agencies	13
Medicaid Certified Agencies	3
Medicare Certified Agencies	9

Homemaker & Companion Service Companies	
Companies	12

Ambulatory Surgical Centers	
Facilities	4
Operating Rooms	9
Recovery Beds	29

2013 Florida County Profiles

Citrus (Continued)

Rural Designation	
Rural (Yes/No)	NO

Assisted Living Facilities	
Total Beds	957
OSS Beds ²	22
Non-OSS Beds	935
Total Facilities	20
Facilities With ECC License ³	4
Facilities With LMH License ⁴	1
Facilities With LNS License ⁵	5

Hospitals	
Hospitals	2
Hospitals With Skilled Nursing Units	0
Hospital Beds	326
Skilled Nursing Unit Beds	0

Medical Professionals	
Medical Doctors	
Licensed	209
Limited License	0
Critical Need Area License	1
Restricted	0
Medical Faculty Certificate	0
Public Health Certificate	0
Specialties	
Licensed Podiatric Physicians	9
Licensed Osteopathic Physicians	39
Licensed Chiropractic Physicians	27
Registered Nurses	
Licensed Registered Nurses	1,680

Driver's License	
Drivers With Florida Driver's License - All Ages	117,050
Drivers With Florida Driver's License - Age 60+	54,953
Percent of Drivers With Florida Driver's License - Age 60+	46.9%

Food Stamps (60+)	
Participants (60+)	2,388
Potentially Eligible	8,497
Food Stamp Participation Rate (60+)	28.1%

Registered Voters	
Registered to Vote in Florida - All Ages	98,248
Registered to Vote in Florida - Age 60+	50,344
Percent of Population Registered to Vote in Florida - Age 60+	51.2%

Households With Cost Burden Above 30% and Income Below 50% Area Median Income (65+) (2010)	
Elder Households	28,997
Percent of All Households	9.4%

Median Household Income (All Ages)	
2008-2012	\$39,034

Medicaid & Medicare Eligibility	
Medicaid Eligible - All Ages	23,745
Medicaid Eligible - 60+	4,055
Dual Eligible - All Ages	5,902
Dual Eligible - 60+	3,737

Veterans	
Total	23,954
Age 45-64	6,897
Age 65-84	14,253
Age 85+	2,804

Disability Status (60+)	
With One Type of Disability ⁶	8,680
Hearing	7,801
Vision	3,250
Cognitive	4,224
Ambulatory	11,257
Self-Care	3,597
Independent Living	6,339
With Two or More Disabilities	9,047
With No Disabilities	39,944
Probable Alzheimer's Cases ⁷	5,504

English Proficiency (60+)	
With Limited English Proficiency	477

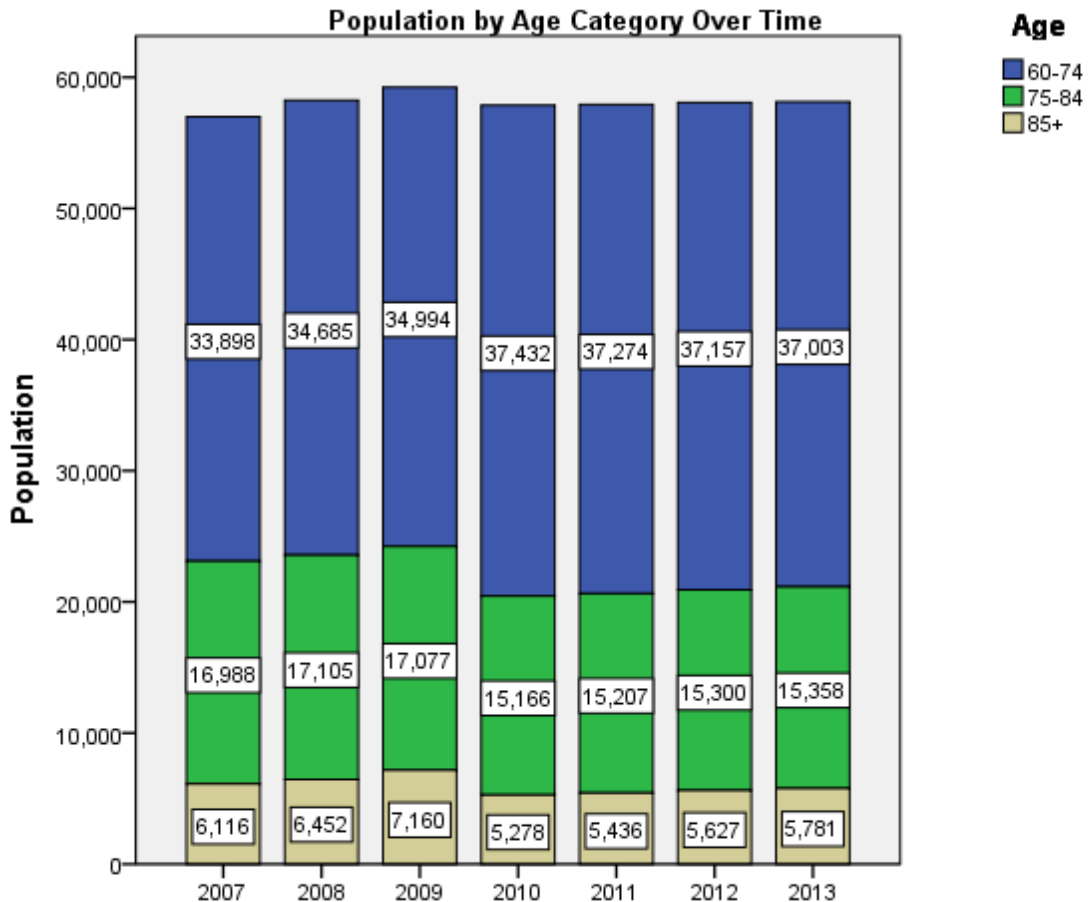
2013 Florida County Profiles

Citrus (Continued)

Cost of Living	
	Annual Expenses ⁸
Single Elders	
Owner without Mortgage	\$19,668
Renter, one bedroom	\$23,280
Owner with Mortgage	\$27,972
Elder Couple	
Owner without Mortgage	\$32,100
Renter, one bedroom	\$35,712
Owner with Mortgage	\$40,404

Note: Wider Opportunities for Women Elder Economic Security Standard™ Index (Elder Index) measures how much income retired older adults require to meet their basic needs—without public or private assistance. The Elder Index measures basic expenses for elders age 65+ living in the community, not in institutions.

Useful Websites
County Chronic Disease Profile (Citrus)
Florida Housing Data Clearinghouse (Citrus)
Behavioral Risk Factors (BRFSS) (Citrus)





2013 Florida County Profiles

¹ Total Minorities = (60+ Population) – (White Non-Hispanic 60+)

² OSS beds: Optional State Supplementation beds

³ ECC License: Extended Congregate Care License

⁴ LMH License: Limited Mental Health License

⁵ LNS License: Limited Nursing Services License

⁶ With One Type of Disability: 60+ people who have only one type of disability

⁷ Probable Alzheimer's Cases = (65-74 Population x 0.0136) + (75-84 Population x 0.1822) + (85+ Population x 0.4098)

⁸ Annual expenses include: housing, including utilities, taxes, insurance; food; transportation; health care, based on good health; and miscellaneous.

Sources

- Population: Florida Population by County, Age, Race, Ethnicity and Gender provided by Florida Legislature, Office of Economic and Demographic Research
- Financial Status & Living Situation: Department of Elder Affairs calculations based on Florida Population data and 2007-2011 American Community Survey
- Medically Underserved Population (Data as of 7/18/2014): Florida Department of Health and U.S. Department of Health and Human Services
- Grandparents: Department of Elder Affairs calculations based on Florida Population data and 2007-2011 American Community Survey, Special Tabulation on Aging
- Skilled Nursing Facility Utilization, Adult Day Care, Adult Family Care Home, Ambulatory Surgical Centers, Assisted Living Facilities, Home Health Agencies, Homemakers & Companion Service Companies, Hospitals: Florida Agency for Health Care Administration
- Rural Designation: Based on the definition of Rural Designation by Rural Economic Development Initiative
- Medical Professionals: Florida Department of Health
- Driver's License: Florida Department of Highway Safety & Motor Vehicles
- Food Stamps: Florida Department of Children and Families
- Registered Voters (Data as of 1/31/2014) : Florida Department of State
- Households with Cost Burden Above 30% and income below 50% Area Median Income: The Shimberg Center for Housing Studies
- Median Household Incomes: U.S. Census Bureau: State and County QuickFacts
- Medicaid & Medicare Eligibility and Medicaid Eligibility: Florida Agency for Health Care Administration
- Veterans Demographics: Florida Department of Veterans' Affairs
- Disability Status: Department of Elder Affairs calculations based on Florida Population data and 2009-2011 American Community Survey Data
- Probable Alzheimer's Cases: Department of Elder Affairs calculations based on Florida Population data and Alzheimer's by Age in 2011 Alzheimer's Disease Facts and Figures report at http://www.alz.org/documents_custom/Facts_2011/ALZ_FL.pdf?type=interior_map&facts=undefined&facts=facts
- English Proficiency: Department of Elder Affairs calculations based on Florida Population data and 2007-2011 American Community Survey, Special Tabulation on Aging
- Cost of Living (Data as of 7/18/2014): Wider Opportunities for Women Elder Economic Security Standard™ Index (Elder Index) at <http://www.basiceconomicsecurity.org/EI/>